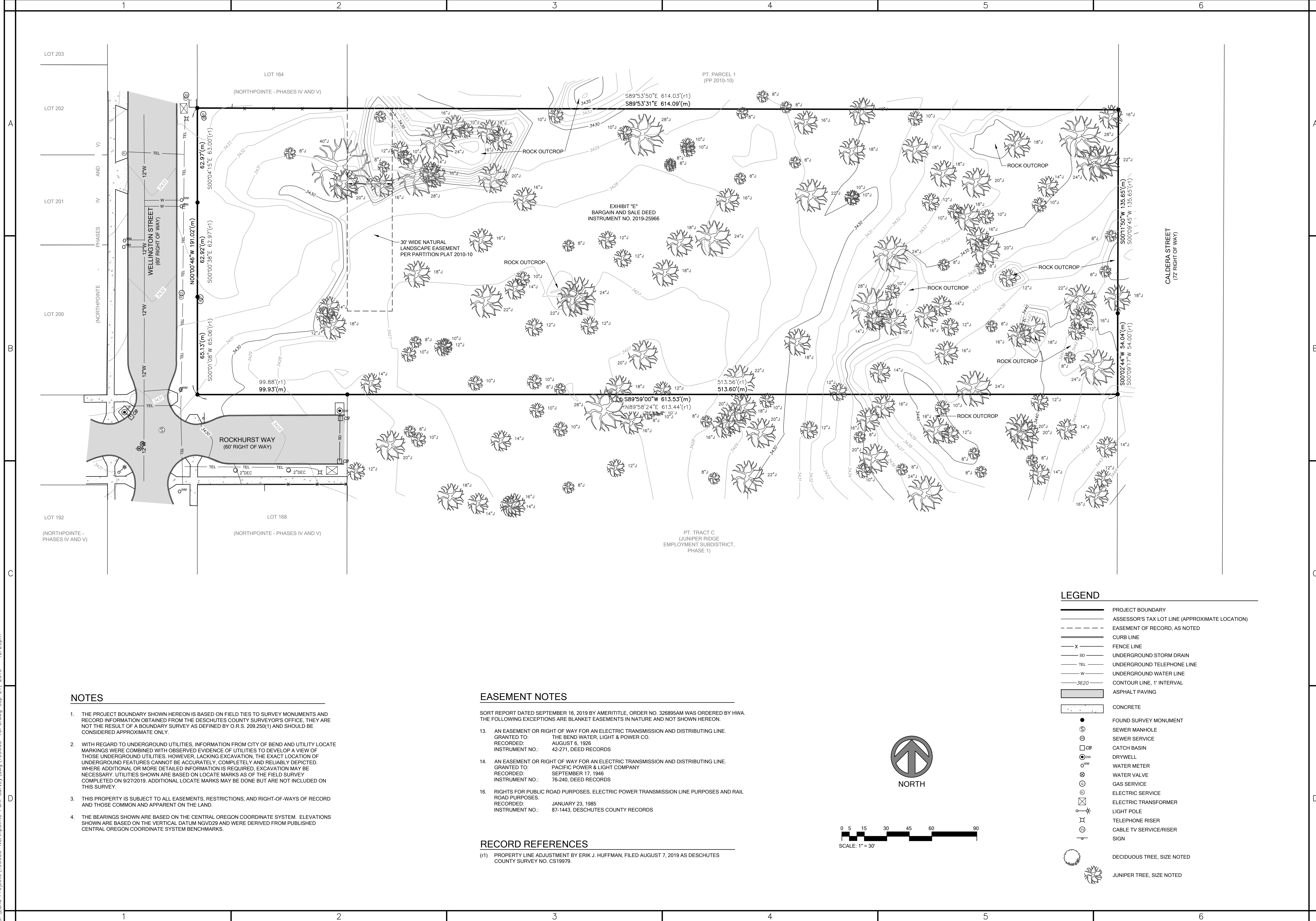


S:\Land Projects\190905-Northpointe Park_Survey.dwg - 12:29pm



NOTES

1. THE PROJECT BOUNDARY SHOWN HEREON IS BASED ON FIELD TIES TO SURVEY MONUMENTS AND RECORD INFORMATION OBTAINED FROM THE DESCHUTES COUNTY SURVEYOR'S OFFICE. THEY ARE NOT THE RESULT OF A BOUNDARY SURVEY AS DEFINED BY O.R.S. 209.250(1) AND SHOULD BE CONSIDERED APPROXIMATE ONLY.
2. WITH REGARD TO UNDERGROUND UTILITIES, INFORMATION FROM CITY OF BEND AND UTILITY LOCATE MARKINGS WERE COMBINED WITH OBSERVED EVIDENCE OF UTILITIES TO DEVELOP A VIEW OF THOSE UNDERGROUND UTILITIES. HOWEVER, LACKING EXCAVATION, THE EXACT LOCATION OF UNDERGROUND FEATURES CANNOT BE ACCURATELY, COMPLETELY AND RELIABLY DEPICTED. WHERE ADDITIONAL OR MORE DETAILED INFORMATION IS REQUIRED, EXCAVATION MAY BE NECESSARY. UTILITIES SHOWN ARE BASED ON LOCATE MARKS AS OF THE FIELD SURVEY COMPLETED ON 9/27/2019. ADDITIONAL LOCATE MARKS MAY BE DONE BUT ARE NOT INCLUDED ON THIS SURVEY.
3. THIS PROPERTY IS SUBJECT TO ALL EASEMENTS, RESTRICTIONS, AND RIGHT-OF-WAYS OF RECORD AND THOSE COMMON AND APPARENT ON THE LAND.
4. THE BEARINGS SHOWN ARE BASED ON THE CENTRAL OREGON COORDINATE SYSTEM. ELEVATIONS SHOWN ARE BASED ON THE VERTICAL DATUM NGVD29 AND WERE DERIVED FROM PUBLISHED CENTRAL OREGON COORDINATE SYSTEM BENCHMARKS.

EASEMENT NOTES

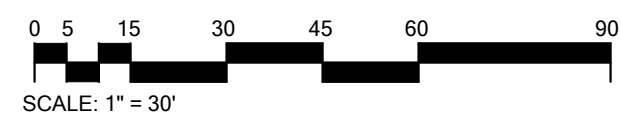
- SORT REPORT DATED SEPTEMBER 16, 2019 BY AMERITITLE. ORDER NO. 326895AM WAS ORDERED BY HWA. THE FOLLOWING EXCEPTIONS ARE BLANKET EASEMENTS IN NATURE AND NOT SHOWN HEREON.
13. AN EASEMENT OR RIGHT OF WAY FOR AN ELECTRIC TRANSMISSION AND DISTRIBUTING LINE.
GRANTED TO: THE BEND WATER, LIGHT & POWER CO.
RECORDED: AUGUST 6, 1926
INSTRUMENT NO.: 42-271, DEED RECORDS
 14. AN EASEMENT OR RIGHT OF WAY FOR AN ELECTRIC TRANSMISSION AND DISTRIBUTING LINE.
GRANTED TO: PACIFIC POWER & LIGHT COMPANY
RECORDED: SEPTEMBER 17, 1946
INSTRUMENT NO.: 76-240, DEED RECORDS
 16. RIGHTS FOR PUBLIC ROAD PURPOSES, ELECTRIC POWER TRANSMISSION LINE PURPOSES AND RAIL ROAD PURPOSES.
RECORDED: JANUARY 23, 1985
INSTRUMENT NO.: 87-1443, DESCHUTES COUNTY RECORDS

RECORD REFERENCES

- (r1) PROPERTY LINE ADJUSTMENT BY ERIK J. HUFFMAN, FILED AUGUST 7, 2019 AS DESCHUTES COUNTY SURVEY NO. CS19979.

LEGEND

- PROJECT BOUNDARY
- ASSESSOR'S TAX LOT LINE (APPROXIMATE LOCATION)
- EASEMENT OF RECORD, AS NOTED
- CURB LINE
- FENCE LINE
- UNDERGROUND STORM DRAIN
- UNDERGROUND TELEPHONE LINE
- UNDERGROUND WATER LINE
- CONTOUR LINE, 1' INTERVAL
- ASPHALT PAVING
- CONCRETE
- FOUND SURVEY MONUMENT
- SEWER MANHOLE
- SEWER SERVICE
- CATCH BASIN
- DRYWELL
- WATER METER
- WATER VALVE
- GAS SERVICE
- ELECTRIC SERVICE
- ELECTRIC TRANSFORMER
- LIGHT POLE
- TELEPHONE RISER
- CABLE TV SERVICE/RISER
- SIGN
- DECIDUOUS TREE, SIZE NOTED
- JUNIPER TREE, SIZE NOTED



COPYRIGHT 2019
HICKMAN, WILLIAMS & ASSOCIATES
Any reproduction or use in any form without express
written consent of HICKMAN, WILLIAMS & ASSOCIATES INC.
is prohibited and subject to criminal prosecution.
ALL RIGHTS RESERVED

REGISTERED
PROFESSIONAL
LAND SURVEYOR
Benjamin J. Hron
OREGON
SEPTEMBER 17, 2018
BENJAMIN J. HRON
92723
EXPIRES: 6/30/2021

BEND PARKS AND RECREATION DISTRICT
NORTHPOINTE PARK
TOPOGRAPHIC SURVEY
LOCATED IN SECTIONS 9 AND 10 OF T. 17 S., R. 12 E., W.M.
CITY OF BEND DESCHUTES COUNTY OREGON

HWA
CIVIL ENGINEERING | SURVEYING | PLANNING
62330 O.B. RILEY ROAD, S.E., 100, BEND, OR 97703
WEB: WWW.HWA-INC.COM

REVISIONS	
1.	
2.	
3.	

SURVEYED BY: **DH**
DRAWN BY: **AQR**
CHECKED BY: **PGC**
SCALE: 1"=30'
FILE: 190905-TOPO.DWG
DATE: **9/27/2019**

SHEET
1
OF 1 SHEETS

HWA PROJECT: 190905