



### Early 1900 Ranch House & Tack Shed Restored with Original Furnishings from 1939-1949

Today, the house and tack shed have been restored to showcase the era that the Matson family farmed the property. The home is furnished to tell the story of life during that depression era. Working with Bend Park & Recreation District, Sharron Matson Rosengarth and her family have donated countless hours to help bring to life Dean & Lily's vision and sharing it with our community.



Sharron has many stories to share about her family's time on Timberlane Ranch. We invite you to contact Bend Park & Recreation District to arrange a tour!

## Hollinshead Barn Rental Information

Hollinshead Barn offers a piece of history and rustic charm for meetings and events, set in a beautiful park location.



The facility features two floors with beautiful hardwood floors throughout, modern kitchen and restrooms, an accessible lift for the second floor, lots of windows looking out over the park, outdoor patios, barbeque, benches and access to the park.

Information on reserving Hollinshead Barn and other facilities is available online at [www.bendparksandrec.org](http://www.bendparksandrec.org), click on "Go Outside" or contact Bend Park & Recreation District 541-389-7275.

Bend Park & Recreation District  
at(541) 389-7275.

[www.bendparksandrec.org](http://www.bendparksandrec.org)



## Hollinshead Park Homestead House & Tack Shed Museum



**Tour these  
priceless treasures of  
Central Oregon history**

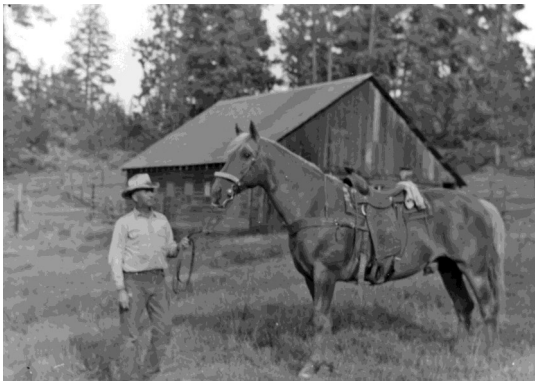
*play for life*



## Hollinshead Park Homestead House & Tack Shed

---

Tucked in the heart of Bend is a unique historical experience. The Hollinshead Park Homestead House and Tack Shed Museum offers visitors a look back to life in Central Oregon in the 1940's.



Hollinshead Park is part of what was a 160 acre horse and dairy farm called Timberlane Ranch, owned by Dean and Lily Hollinshead. Hollinshead Barn, the Homestead House and Tack Shed are among the remaining original structures. Built in the early 1900's the house was home to the various sharecroppers who worked the farm, including the Matson Family in the late 30's and 40's.



In 1974, Dean & Lily Hollinshead offered a portion of the property to Bend Park and Recreation District with the vision that it could become a special place for future visitors to get a sense of life on a Central Oregon farm. The District acquired the 16.5 acre property in 1982.

The Bend Park and Recreation District is committed to retaining the historical nature of the park while providing for current day use. Hollinshead Barn, the original horse barn, has been renovated for a rental facility for weddings, receptions, meetings and reunions. Fittingly, Hollinshead Park is also home to Bend's Community Garden.



## Scheduling tours of the Hollinshead Park Homestead House & Tack Shed

---

Sharron Rosengarth conducts tours of the Homestead House and Tack Shed, offering wonderful stories of her life on the farm, as well as history about Dean and Lily Hollinshead and the Bend area.



**Tours are by appointment only.**

**Call Sharron at (541) 410-6891  
or Bend Park & Recreation  
District at (541) 389-7275.**