



Aspen Hall Rental Packet

Thank you for your interest in a Bend Park and Recreation District (BPRD) facility for your event. General information and steps to making a reservation for Aspen Hall are detailed below.

FACILITY OVERVIEW

Address 18920 Shevlin Park Road, Bend, OR 97703

Description

Aspen Hall's idyllic setting and spacious grounds are a wonderful venue for events, from meetings to weddings. The hall has a lodge-like feel with exposed beams, large wood burning fireplace and wood framed windows. The spacious kitchen makes it easy to handle food preparation and limited cooking of large meals. A large paver patio with three round picnic tables overlooks Shevlin Pond, a grassy lawn and pathways. In this quiet, serene location, you won't believe you are only four miles from downtown Bend.

Room Dimensions

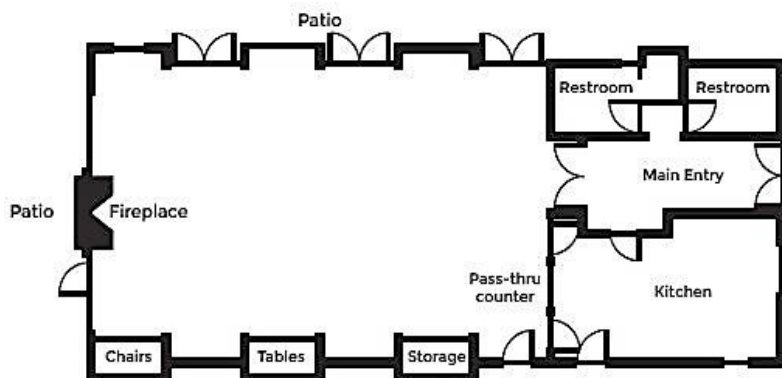
- Length - 60'
- Width - 44'
- Ceiling height - vaulted
- Total sq. ft. - 2640'

Capacity

- 150, reception style setup

Amenities

- 150 black folding chairs
- 25 folding banquet tables (8' x 2.5')
- Stone fireplace
- WiFi
- Heating/AC
- Kitchen includes:
 - Electric, commercial double oven
 - Six stove-top burners
 - 24" x 24" grill top
 - Double sinks with stainless steel counter
 - 8' x 30" counter table on casters
 - Commercial refrigerator and large freezer
 - Ice machine
 - Microwave
 - Dishwasher
 - Quartz countertops and serving window



GENERAL RULES AND REGULATIONS

Please review the following rules and regulations set by BPRD. Failure to abide by rules and regulations may result in withholding of deposit and/or additional charges for damage to facility.

Accessibility and Parking

- Parking is limited to 64 spaces. We encourage guests to carpool or find other modes of transportation.
- The parking lot is shared by Shevlin Park, trail and facility users. Users may not deny access to the public parking lots or the park.
- Vehicles must not be driven on park land without a special permit. Do not drive on the pavers.
- Animals are prohibited from the facility, with the exception of service animals.

Amplified Sound and Noise

Amplified sound must comport with the [Park Rules and Regulations](#) and respect the surrounding neighbors and park users. BPRD reserves the right to restrict amplified sound should it conflict with other park or area reservations or building use.

Cleaning Requirements

Users are expected to return the facility to pre-event layout and cleanliness conditions. All personal items (catering, decorations, event supplies, etc.) must be removed from the facility upon conclusion of the event. Cleaning supplies are provided on-site and the user will receive a detailed breakdown of the [Facility Cleaning Requirements](#).

Decorations, Setup and Floor Care

- Users are responsible for set up and take down of chairs and tables.
- Items may be attached to the wall with painters' tape only. The use of nails, staples, tacks, etc. is prohibited.
- There are outlets above each storage closet for plugging in string lights. The outlets can be turned on by the light switch in each closet. Hooks are provided on the ceiling beams.
- Loose glitter and confetti in and/or outside of the facility is prohibited.
- Throwing rice or birdseed in and/or outside of the facility is prohibited.
- Candles or flame producing devices are prohibited, with the exception of Sterno fuel containers when used to heat catering dishes and only when the table or countertop is protected from heat or flame. The use of battery-operated candles is encouraged.

Fireplace

- The fireplace can be used only during the winter season (November – March).
- Fireplace will be cleaned out before each use.
- User should leave any live coals in the fireplace. User is not responsible for cleaning out the fireplace after use, so as to avoid any accidental fires. Forest fires are a serious concern in Shevlin Park and all due care should be taken to avoid them.
- Firewood is located outside the hall. User must provide own kindling, matches, or paper.

Food and Beverage

- Users can have their event catered by the vendor of their choice (food trucks included).
- Users supply their own dishes, cups, napkins and utensils. We encourage the use of recycled and sustainable products. BPRD does not provide supplies, including utensils, coffee, and other event or meeting materials.
- Charcoal briquette barbecues or fire pits are prohibited.
- Alcohol may be served and requires the following:
 - Additional rider for Host Liquor Liability on the Certificate of Insurance
 - Adherence to OLCC and City of Bend regulations
 - Selling alcohol requires an OLCC Liquor License
 - Bartenders are required to be licensed

Vendors

Users may use vendors of their choice. BPRD does not have a preferred vendor list, but a list of area vendors is available upon request.

Hours of Operation

- 9:00 am - 11:00 pm
 - **Entry prior to 9:00 am is not permitted. This is not negotiable.**
 - Setup and cleanup are to be accounted for in rental duration.

Insurance

Users must provide a Certificate of Insurance (COI) for General Liability in the amount of \$2,000,000 per occurrence and \$4,000,000 general aggregate, and name Bend Park and Recreation District (799 SW Columbia St, Bend, OR 97702) as additionally insured. The COI is due no later than 30 days prior to your event. Additional details can be found in our [Insurance Requirements](#).

No Fireworks

Possessing, discharging or using any kind of firework or other pyrotechnic device on BPRD property is prohibited. Whether accidental or intentional, people start wildfires every year in Central Oregon, costing hundreds of thousands of dollars and endangering lives and our natural resources.

No Smoking

Smoking, vaping, and the use of tobacco or marijuana in any form is prohibited on district property, whether or not in a vehicle.

Signage

Any signage intended to be affixed to fencing, structures, or staked in the ground must be pre-approved by the district. Signs may not block the view of the public, cause a distraction, or obscure any facility sponsor signage. All signs must be taken down upon conclusion of the reservation.

Tents and Canopies

Tents and canopies may be set up on the patio and/or adjacent lawn. The use of stakes in the ground is prohibited. Tents can be anchored by sand bags or concrete ballast.

Tours and Open Houses

Aspen Hall is open to the public on various Mondays 9:00 - 11:00 am. For a complete list of open house dates, please visit our [Aspen Hall rental webpage](#).

RATES AND FEES

Aspen Hall can be reserved for weekdays and weekends, from 9:00 am - 11:00 pm, up to 18 months in advance. Rental time must account for setup and cleanup of the facility. **Early entry is not permitted.**

Rates

Peak Season: April through October

Rental Type	Mon-Thurs Hourly	Mon-Thurs Full Day	Fri/Sat/Sun (Full Day Only)
Commercial In-District	\$125	\$1,500	\$1,800
Commercial Out-of-District	\$150	\$1,800	\$2,160
Private In-District	\$95	\$1,150	\$1,400
Private Out-of-District	\$114	\$1,338	\$1,680
501(c)(3) Non-Profit	\$60	\$700	\$850

Off Season: November through March

Rental Type	Mon-Thurs Hourly	Mon-Thurs Full Day	Fri/Sat/Sun (Full Day Only)
Commercial In-District	\$115	\$1,350	\$1,650
Commercial Out-of-District	\$138	\$1,620	\$1,980
Private In-District	\$85	\$1,000	\$1,250
Private Out-of-District	\$102	\$1,200	\$1,500
501(c)(3) Non-Profit	\$55	\$650	\$750

Payment and Deposit

- \$250 booking deposit (per day reserved) is required at time of booking and is credited toward the overall rental balance. **Booking deposit is non-refundable.**
- The remaining balance of rental fee is due 30 days prior to the event. If a reservation is made less than 30 days before the event, payment for the rental is due in full.
- All reservations (per day reserved) require a \$500 deposit that is due 30 days prior to the event. The deposit is fully refundable as long as the user adheres to BPRD rules and regulations, facility cleaning requirements and no damage has occurred to the facility.

Cancellations and Refunds

- Reservations can be rescheduled up to 30 days prior to the event.
- Refunds for cancellations are issued as followed:

- Full refund (less the booking deposit) of rental fee up to 30 days prior to the event
- No refund of rental fee within 30 days of the event

Steps to Making a Reservation

Person(s) renting Aspen Hall must be at least 21 years of age.

1. Check the rental calendar on the BPRD website for availability
2. Download the [Facility Rental Information Request](#) form and email a completed copy to FacilityRentals@bendparksandrec.org.
3. Please allow at least two business days for BPRD to review request forms. Once the request form has been reviewed, BPRD will contact the primary patron listed with further information and next steps for booking. All request forms are responded to in the order they are received.

CONTACT US

Reservation and Facility Questions: Rentals Division
FacilityRentals@bendparksandrec.org
(541) 706-6149

Account Balance and Payment: Bend Park and Recreation District Office
Attn: Rentals Division
799 SW Columbia St, Bend, OR 97702
(541) 389-7275