



# DESCHUTES RIVER ACCESS & HABITAT RESTORATION

---

## APPENDICIES



ABOVE: River access point marker and interpretive signage at Riley Ranch Nature Reserve.

# TABLE OF CONTENTS

## 06 | APPENDICES

1. Glossary	41
2. Existing Conditions Assessments	43
3. Inventory of Recreational Use at Parks on the Deschutes River, February 2020	71
4. Deschutes River Habitat Inventory Summary Report, February 2020	223
5. Community Survey Summaries	282
6. Project Ideas Considered but Dismissed	288
7. Dog Off-Leash River Access Analysis	294
8. Project-Specific Maps	329
9. Regulatory Framework	344





# APPENDIX 1

## GLOSSARY

# GLOSSARY

1. **Capital Improvement Plan (CIP)** - A planning tool designed to guide the implementation of the district's Comprehensive Plan and to provide for the acquisition and development of parks and recreation facilities during the succeeding five-year period. The CIP is reviewed annually by the Board and revised to prioritize the most important needs and recognize budget constraints.
2. **Census** - The census of population and housing, taken by the Census Bureau in years ending in zero. Article I of the Constitution requires that a census be taken every ten years for the purpose of reapportioning the U.S. House of Representatives.
3. **Comprehensive Plan** - The district's Comprehensive Plan is a tool used by park planners and the board to plan for growth in park, trail, facility and recreation program demands. Based on input from the community, the plan helps guide the future of the district over a ten-year time frame.
4. **Designated Access Point** - a deliberately-created area to enter the river from district property. Access points include beaches, small breaks in fencing, boardwalks, and fishing piers.
5. **Downriver** - the direction in which the river flows. As used in this plan, downstream refers to the northern direction.
6. **Endangered Species Act (ESA) Critical Habitat** - the abiotic and biotic setting that currently or periodically contains the resources and conditions necessary to support one or more life processes of a species.
7. **Focus Group** - a diverse focus group to help guide plan development, inclusive of representatives of 14 organizations. This group includes representatives from natural resource agencies, business, higher education, environmental organizations, the City of Bend, universal access organizations and recreational organizations.
8. **General Fund** - the district's general operating fund, and accounts for nearly all district operations. Principal sources of revenue are property taxes, user fees and charges, interest income, grants and contributions. Primary expenditures are personnel, materials and services necessary to provide quality services for the community.
9. **Grant** - a donation in cash or in-kind services, which may be made to support a specified purpose or function, or general purpose.
10. **River Left** - the left side of the river when looking downstream (in the northern direction).
11. **River Right** - the right side of the river when looking downstream (in the northern direction).
12. **Upriver** - the opposite direction in which the river flows; nearer to the water source. As used in this plan, upstream refers to the southern direction.
13. **User-created Access Point** - a place to enter the river created by park visitors and dogs. These points were not created by the district. They include small foot trails to the water, or larger areas where the ground is bare soil due to use.





## **APPENDIX 2**

### **EXISTING CONDITIONS ASSESSMENTS**

## Existing Conditions Assessments

Before launching the Deschutes River Access and Habitat Restoration Plan, staff identified the need to gather baseline data to inform the planning effort. The following existing conditions assessments were compiled for 14 of the 16 river parks. (Assessments for Drake Park and Pacific Park were not completed as the current CIP project precluded the need for the river access plan to consider those two parks.) The existing conditions assessments were provided to the focus group as part of the information available to guide project identification.

## Existing Conditions for River Rim Park

### Summary

Acquired in 2003, River Rim Park is a small natural area nestled in a residential neighborhood. The park includes a 9-car parking lot, an 800-foot long steep trail to the river, and is frequented by residents walking dogs, fishing or wading, as well as whitewater kayakers. The river in this section is fast moving with whitewater downstream. There may be potential to develop a natural surface loop trail, an improved kayak launch site, riparian habitat improvements, as well as shelter exposed utilities.

### Assessment

<b>Park</b>	<b>River Rim Park</b>
Address	19400 Charleswood Lane
Description	Aggregate trail starts out on flat ground, between a fence and a house. The trail becomes steep, and ends at a river access point. Exposed power and irrigation utilities exist near the access point. Signs indicate “take out here, extreme risk.” Foot trail along the river is very rocky and has vegetation and includes signage stating “no trespassing” at boundary.  Of the seven access points, one is designated with a sign, others are user-created.
<b>Physical characteristics</b>	
Park size	3.6 acres
River frontage	540 feet
Slopes	Flat at top of trail, steep slopes to river, some flat area adjacent to river
<b>Facilities and uses</b>	
Developed park facilities	Trail surface aggregate path at the park entry and to the steep section. Signs at designated access point. Large woody debris with cable anchors in water near bank that were placed as a restoration project by the developer of the River Rim development, Oregon Department of Fish and Wildlife and other partners.
Typical uses	Expert kayak put in, wading, dog water access, fishing.
Accessible	No
Transportation	Nine parking spots, including one accessible spot exits in the public right of way. Sidewalk and local road connections to the park.
View	Pleasant site with lava rocks and view of rocky canyon, hill across the river.
Paddling access	Steep slope, kayaker use, wooden ramp.



Fishing access	Yes
Wading/ Swimming access	Nearby rapids, and cabled large woody debris make swimming unsafe.
Use counts	<p>Trail counter data was collected at the entry to the park in 2019, 32 average daily trips were counted for July and August. The highest number of people in one day, 241, was recorded on July 27 during the Subaru Outside Games. Peak use occurs in spring, summer, and fall, with the most use in summer. Peak use occurs mid-day.</p> <p>The <i>Inventory of Recreational Use at Parks on the Deschutes River</i> recorded people crossing in and out of the access point 59 times over 5 hours in summer 2019. In addition, dogs crossed in and out of the access points 17 times during the same 5 hours.</p>
Site history	River Rim Fish Habitat Restoration project was completed by the developer and associated partners in 2003 and included placing large woody debris and seeding with native grasses and bitterbrush. A 15' wide easement for an irrigation line runs from the river along the current trail out of the park. The property was acquired by BPRD in 2003.
Planned projects	BPRD is evaluating the potential for a natural surface loop trail within the park.
System wide context	River Rim Park is categorized by BPRD as a developed community park, although it appears as a natural area park in a neighborhood setting.
Site context	The park is adjacent to the River Rim residential development and the River Vale residential development currently being constructed. Access to the park is via River Rim Drive, a local road. Homes overlook the park on three sides. With River Vale under development, there will be more residents within walking distance to the park in the near future. Across the river, there are three large lots with houses.
Impacts to adjacent lands (parking, traffic, light and sound)	None identified
Distance from other access points/similar uses and facilities	<ul style="list-style-type: none"> <li>• 4.3 miles to Farewell Bend Park</li> <li>• 7 miles to Rim Rock Trailhead in the Deschutes National Forest</li> </ul>
Opportunities	<ul style="list-style-type: none"> <li>• Enclose the irrigation facilities (note these are River Rim HOA property).</li> <li>• Improve kayak launch to prevent erosion.</li> <li>• Revegetate riparian zone with trees and shrubs, add fencing and/or signage for restoration areas and access points.</li> <li>• Reroute the steep fall line trail.</li> </ul>

## Existing Conditions for Farewell Bend Park

### Summary

Farewell Bend Park can be divided into two distinct sections with different characteristics. Upriver of the Bill Healy bridge, visitor experience a more natural setting that feels well removed from Bend's urban environment. In this section, the Deschutes River Trail is a natural surface, and there are many user-created access points to the river. Downriver of the bridge, the park is developed with a playground, lawn, picnic shelter and restrooms. In the downriver section, two access points were developed by BPRD, a beach and a small canoe launch. A habitat restoration project was also completed in this section in partnership with the Upper Deschutes Watershed Council. Opportunities for Farewell Bend Park could include armoring some access points, closing and revegetating some access points, and making improvements to BPRD-developed access.

### Assessment

Park	Farewell Bend Park
Address	1000 SW Reed Market Road
Description	Farewell Bend Park has two designated access points and 33 user created access points. Most user-created access points are within the section upstream of the Bill Healy bridge and are short paths from the trail to the water. The largest user-created access point is at Cedarwood Trailhead. In the downriver section, the park is a good example of a completed access and habitat restoration project. Vegetation is protected by double- and single-rail fencing.
<b>Physical characteristics</b>	
Park size	24 acres
River frontage	Over one mile of riverfront, with 2,717 feet upriver and 2,762 feet downriver
Slopes	The upstream section of the park has significant elevation change down to the river. The downstream section is flatter, with some elevation change from the park down to the river.
<b>Facilities and uses</b>	
Developed park facilities	The upriver section has few developed facilities, including boardwalk, natural surface trail, signs, benches, and a gravel parking lot at Cedarwood Trailhead. The downriver section is a developed park with a beach, a canoe launch, playground, restrooms, lawn area, pedestrian bridge, pier into the river, sidewalks, stormwater facilities, picnic tables and shelter structure, fencing, and parking lots.
Typical uses	River access points in the upriver section see the most use from people standing on the edge of the bank, and dogs standing on the edge or wading/swimming. All recorded types of use were observed—this includes tube/raft, paddleboards, kayak/canoe as well as swimming/wading and fishing. In the downriver section, highest use was observed for wading/swimming, viewing from the banks and dogs swimming/wading. In this section, all types of use were observed.
Accessible	No accessible routes into the water exist.
Transportation	The upriver section includes a gravel parking lot at Cedarwood Trailhead for approximately 6 vehicles. The downriver section includes three parking lots



	with 43 total parking spaces, including 3 accessible spaces. The Deschutes River trail runs along the entire park.
View	In the upriver section, views are of the natural setting of the river canyon. In the downriver section, views include those of Riverbend Park, surrounding residential and commercial development, and Mount Bachelor.
Paddling access	Paddlers most frequently use an access point at Cedarwood Trailhead and the beach area. A third canoe launch was not observed to have high use by paddlers, and has eroded severely.
Fishing access	Anglers may access the river at various points along the trail as well as at the beach.
Wading/ Swimming access	Wading and swimming access occurs mainly at the beach area, but also at other access points along the park.
Use counts	<p>Trail counter data was collected at the Cedarwood Trailhead entrance from June to November 2018 and July to November 2019. An average of 96 people per day were counted during this time. During July and August, average daily trips was 156. While use is greatest on weekends, there is a fairly even distribution each day.</p> <p>The <i>Inventory of Recreational Use at Parks on the Deschutes River</i> recorded people crossing in and out of the access point 987 times over 32 hours in summer 2019. In addition, dogs crossed in and out of the access points 152 times during the same 32 hours.</p>
Site history	The park was acquired in 1999 and developed in 2005. Habitat restoration was completed in partnership with the Upper Deschutes Watershed Council along portions of the park. The pedestrian bridge was replaced in 2016.
Planned projects	None
System wide context	River access at Farewell Bend Park is one of only a few parks with an extended length of trail along the river in a more natural setting. Other parks with this characteristic include First Street Rapids Park, Sawyer Park and Riley Ranch Nature Reserve. The beach is one of four similar access points, which are found at Riverbend Park, McKay Park, and Drake Park.
Site context	
Impacts to adjacent lands (parking, traffic, light and sound)	At Cedarwood Trailhead, “no parking” signs were placed by the City of Bend in recent years to keep road access clear along narrow local roads. Boulders were also placed along the road for the same reason.
Distance from other access points/similar uses and facilities	<ul style="list-style-type: none"> <li>• Pedestrian bridge connects the park to Riverbend Park</li> <li>• 4.3 miles to River Rim Park</li> </ul>
Opportunities	<ul style="list-style-type: none"> <li>• The number of access points could be reduced with plantings and/or fencing in some areas.</li> <li>• Accessible route to the water at the beach area</li> <li>• Could replace sand with rock at the beach area since the sand is being moved downstream.</li> <li>• The canoe launch has eroded severely, and could be redesigned, closed, or repaired.</li> </ul>

## Existing Conditions for Riverbend Park

### Summary

Riverbend Park was developed in 2009 as a main river access point. Today, Ride the River shuttle service brings visitors to the park, and a concessioner offers SUP rentals. The district also leases two additional parking lots. Upriver of the footbridge, the Upper Deschutes Watershed Council and BPRD are coordinating on the design and construction of a habitat restoration and access project. There are opportunities to improve accessibility to the river.

### Assessment

<b>Park</b>	<b>Riverbend Park</b>
Address	799 SW Columbia Street
Description	Upstream of the footbridge, there are 8 user-created access points and there is no fencing along the trail. Downstream of the footbridge, double and single-rail fencing protect a habitat restoration project completed in 2009. The one designated access point in this area is the rocky beach.
<b>Physical characteristics</b>	
Park size	20 acres
River frontage	3,139 feet
Slopes	The park is generally flat but a few feet above the river, making access points somewhat steep. There is also some slope on both sides of the footbridge along the Deschutes River Trail and cliffs upstream of the footbridge.
<b>Facilities and uses</b>	
Developed park facilities	Park facilities include a lawn area, the Deschutes River Trail, a large parking lot, restrooms, shaded picnic area, benches, a river access point, storage, the district office, shuttle drop off zone, and internal paved paths.
Typical uses	The park's river access is used for all activities identified in <i>Inventory of Recreational Use at Parks on the Deschutes River</i> , with the most use from people viewing the river, swimming dogs, and people tubing.
Accessible	No accessible routes to the water exist. However, the design for the upriver section includes an accessible access point with a transfer bench and stepped stairs. This design was developed in consultation with the Central Oregon Coalition for Access (COCA).
Transportation	<p>The parking lot at Riverbend Park has 115 spaces, including 9 accessible parking spaces and 4 15-minute loading zone spaces. BPRD leases two parking lots adjacent to the park, totaling approximately 300 spaces. Visitors may also park at the Park N Float location (276 spaces) and take the Ride the River Shuttle.</p> <p>The park is also accessible via the Deschutes River Trail on both sides of the river, a footbridge, the Bill Healy Bridge, and is also near the flag bridge in the Old Mill District. Bike racks are also available.</p>
View	In the upriver section, the cliffs are a prominent feature. In the downriver section, views include Farewell Bend Park, surrounding commercial and residential development, and Mount Bachelor.



Paddling access	Paddling access is most frequently used at the rocky beach, although some paddlers stop at upriver access points, but typically would not put in or take out upriver as those locations are farther from parking.
Fishing access	Anglers most frequently access the river in the upriver section.
Wading/ Swimming access	Wading and swimming occurs mainly at the rocky beach area, but also in much lower numbers at other access points.
Use counts	<p>Ride the River shuttle is provided by Cascades East Transit (CET) as a seasonal route since 2006. In 2019, there were 70,077 passengers during 80 days of shuttle operation. The busiest days were Saturdays. In 2018, Ride the River shuttle added the Park &amp; Float location and saw 78,415 passengers. The shuttle transports tubes in a trailer, which may be rented from the concessioner Tumalo Creek Kayak &amp; Canoe.</p> <p>The <i>Inventory of Recreational Use at Parks on the Deschutes River</i> recorded people crossing in and out of access point #1 1,096 times over 6 hours in summer 2019. Dogs crossed over the access point 169 times during the same 6 hours.</p> <p>The <i>Inventory of Recreational Use at Parks on the Deschutes River</i> recorded people crossing in and out of access points #2-9 309 times over 5 hours in summer 2019. Dogs crossed over the access point 306 times during the same 5 hours.</p>
Site history	Riverbend Park was acquired in 2004 and developed in 2009. Habitat restoration was completed in partnership with the Upper Deschutes Watershed Council for the downstream portion of the park. The pedestrian bridge was replaced in 2016.
Planned projects	A habitat restoration and access project is in design between the Bill Healy Bridge and the footbridge.
System wide context	Riverbend Park is one of the busiest and most active BPRD parks. Other parks with a beach access include Farewell Bend, McKay, and Drake parks.
Site context	
Impacts to adjacent lands (parking, traffic, light and sound)	<ul style="list-style-type: none"> <li>On warm days in the summer, parking can be near capacity. To ease parking concerns, BPRD leases two lots, and relies on the Ride the River Shuttle service. The Park &amp; Float location has not reached capacity to date.</li> </ul>
Distance from other access points/similar uses and facilities	<ul style="list-style-type: none"> <li>Pedestrian bridge connects to Farewell Bend Park</li> <li>0.6 miles to McKay Park</li> <li>0.7 miles to Park &amp; Float</li> </ul>
Opportunities	<ul style="list-style-type: none"> <li>Opportunity to improve accessibility to the river</li> <li>There could be an opportunity to provide access to the water for dogs</li> </ul>

## Existing Conditions for McKay Park and the Bend Whitewater Park

### Summary

In 2015, McKay Park was redeveloped with the addition of the Bend Whitewater Park. The park's access to the river is highly used for floating, paddling, surfing, and wading. Due to its recent redevelopment, the park may not need projects to be identified in the river access and habitat restoration plan, but instead, will need continued maintenance and minor improvements.

### Assessment

Park	McKay
Address	166 SW Shevlin Hixon Drive
Description	The river includes three channels: a fish ladder (also used for tubing), a whitewater channel, and a habitat channel. On land, the park includes a beach area with an accessible sidewalk to the water, a path providing access to the fish ladder, a lawn area, and planting areas.
<b>Physical characteristics</b>	
Park size	3.7 acres
River frontage	1,111 feet
Slopes	Gradual slopes downriver and towards the river
<b>Facilities and uses</b>	
Developed park facilities	Deschutes River Trail, river access, accessible sidewalk to river, plantings, lawn, restrooms, BPRD office and fencing.
Typical Uses	All types of water activities observed in summer 2019. Activities include dogs on land, dogs in water, people on land, wading/swimming, tubing/rafts, paddleboards, kayaks/canoes, surfers, fishing and snorkelers.
Accessible	An accessible sidewalk to the water.
Transportation	McKay Park is served by multiple transportation facilities, including angled and parallel street parking, bike racks, the Deschutes River Trail, a pedestrian bridge across the river, and the Ride the River Shuttle (during summer months).
View	Views of active river recreation and people-watching in an urban setting.
Paddling access	Access for variety of hand launch craft via the beach area, floater channel drops and at portage path upstream of park.
Fishing access	Yes
Wading/ Swimming access	Yes
Use counts	<p>In 2019, an estimated 240,000 people floated through the fish ladder or walked on the portage path. This is a decrease from an estimated 251,000 people in 2018.</p> <p>Ride the River shuttle is provided by Cascades East Transit (CET) as a seasonal route since 2006. In 2019, there were 70,077 passengers during 80 days of shuttle operation. The busiest days were Saturdays. In 2018, Ride the River shuttle added the Park &amp; Float location and saw 78,415 passengers.</p>



	<p>The shuttle transports tubes in a trailer, which may be rented from the concessioner Tumalo Creek Kayak &amp; Canoe.</p> <p>The <i>Inventory of Recreational Use at Parks on the Deschutes River</i> recorded people crossing in and out of the access point 2,270 times over 9 hours in summer 2019. In addition, dogs crossed in and out of the access points 239 times during the same 9 hours.</p>
<b>Site history</b>	<p>McKay Park was acquired by BPRD in 1998, developed in 1999 and redeveloped in 2015. The Bend Whitewater Park was developed in 2015 and re-opened to the public in 2016 after safety improvements were completed. The whitewater park was developed in partnership with William Smith Properties and Bend Paddle Trail Alliance. BPTA raised \$1.13 million for the project.</p>
<b>Planned projects</b>	None
<b>System wide context</b>	The Bend Whitewater Park is the location of the only whitewater park in Bend.
<b>Site context</b>	<p>BPRD holds an easement for the access point just upriver of the Colorado Avenue bridge to allow portage of the whitewater park.</p> <p>The park lies within the mixed-use riverfront zone which is intended for creative mixed-use redevelopment of mill site properties. The park is adjacent to Shevlin Hixon Drive, the Colorado Avenue bridge, and residential properties. Across the street and river, there are commercial offices and Miller's Landing Park.</p>
Impacts to adjacent lands (parking, traffic, light and sound)	4-hour parking limits were implemented in summer 2019, and the Ride the River shuttle provides additional transportation options to this highly utilized park.
Distance from other access points/similar uses and facilities	<ul style="list-style-type: none"> <li>• 0.2 mile walk to Miller's Landing Park</li> <li>• 0.4 mile walk to Columbia Park</li> <li>• 0.4 miles to Park &amp; Float</li> <li>• 0.6 miles to Riverbend Park</li> <li>• 0.6 miles to Drake Park</li> </ul>
<b>Opportunities</b>	<ul style="list-style-type: none"> <li>• Because the park was recently developed, the park may not need projects to be identified in the river access and habitat restoration plan, but instead, maintenance and minor improvements.</li> </ul>

## Existing Conditions for Miller's Landing Park

### Summary

Miller's Landing Park is a Community park surrounded by older Bend neighborhoods and across from McKay Park. It offers open lawn, shelter, a community garden, a boardwalk, sand play area, and access to the river from an open spot in the fence at the north end of the park. It is also connected to the Deschutes River Trail at the Columbia Drive bridge just north of the Old Mill District. The river in this section is just downstream of the Bend Whitewater Park, and has slower flows between the park and Drake Park. There may be potential to improve existing access points to make access to the water easier, as well as redesign or close access point 2 which has significantly eroded.

<b>Park</b>	<b>Miller's Landing Park</b>
Address	55 NW Riverside Blvd
Description	One access point is a break in the fence on the boardwalk. A second access point is another break in the fence to a small grassy area.
<b>Physical characteristics</b>	
Park size	3.7 acres
River frontage	461 feet
Slopes	Generally flat
<b>Facilities and uses</b>	
Developed park facilities	The park includes a community garden, lawn, sand box, boardwalk, walking paths, picnic shelter, restrooms and parking lot. The Deschutes River Trail runs through the park.
Typical uses	All types of use were observed in summer 2019. Top uses were people viewing, dogs swimming and dogs viewing.
Accessible	Yes
Transportation	21 parking spots, including 1 accessible spot. Bike racks. Street parking is also available. The Deschutes River Trail runs through the park.
View	View of Bend Whitewater Park, surrounding residential neighborhoods.
Paddling access	Yes
Fishing access	Yes
Wading/ Swimming access	Yes
Use counts	<p>The <i>Inventory of Recreational Use at Parks on the Deschutes River</i> recorded people crossing in and out of access point 1 185 times over 6 hours in summer 2019. Dogs crossed the access point 26 times during the same hours.</p> <p>In addition, access point 2 saw people crossing in and out 96 times over 5 hours, and dogs crossing the access point 96 times during the same hours.</p>
<b>Site history</b>	The park was acquired in 2011 and developed in 2014.
<b>Planned projects</b>	None



<b>System wide context</b>	Miller's Landing is a community park. Other parks with a dock include Pageant, Harmon and Brooks parks.
<b>Site context</b>	The park is within a residential area and across the river from McKay Park.
Impacts to adjacent lands (parking, traffic, light and sound)	None identified
Distance from other access points/similar uses and facilities	<ul style="list-style-type: none"> <li>• 0.3 miles to McKay Park</li> <li>• 0.3 miles to Columbia Park</li> </ul>
<b>Opportunities</b>	<ul style="list-style-type: none"> <li>• Access point 1 has a large drop to the water with pointy boulders that could be improved.</li> <li>• Significant erosion at access point 2 could be improved or closed.</li> </ul>

## Existing Conditions for Columbia Park

### Summary

Columbia Park's designated river access is a small intentional break in the fence. It may be accessed from a paved trail descending from the playground area, or from across the river via footbridge. The access point has eroded and there may be an opportunity to design it to be more sustainable.

### Assessment

<b>Park</b>	<b>Columbia Park</b>
Address	264 SW Columbia Street
Description	The designated access point features a break in the fence, and some boulders in the water. In addition, there is a user-created access point just downstream, on a grassy bench area over a single rail fence.
<b>Physical characteristics</b>	
Park size	2 acres
River frontage	379 feet
Slopes	The playground and lawn are on a flat area, the loop trail descends to the river. The river access section is narrow with a flat bench a few feet above the river.
<b>Facilities and uses</b>	
Developed park facilities	The park includes a playground, seasonal portable restroom, a lawn area, and an asphalt loop trail around the park. The river access area is a narrow section along the loop trail, and is grade separated from the rest of the park. Single rail fencing exists along the river.
Typical uses	The river access points see use from people sitting on the grassy bank, people bringing dogs to swim or wade in the river, and as a spot for tubers to enter or exit the river. While prohibited, jumping from the adjacent pedestrian bridge also occurs (the pedestrian bridge is not part of the park and is not owned by BPRD).
Accessible	No
Transportation	Parallel parking along NW Columbia Street and NW Allen Road.
View	Views to residential homes across the river and the pedestrian bridge.
Paddling access	Tube and paddleboard access were observed in summer 2019.
Fishing access	Fishing was not observed in summer 2019.
Wading/ Swimming access	Yes
Use counts	The <i>Inventory of Recreational Use at Parks on the Deschutes River</i> recorded people crossing in and out of the access point 61 times over 5 hours in summer 2019. In addition, dogs crossed in and out of the access points 41 times during the same 5 hours.
<b>Site history</b>	Acquired in 1954, the park was developed in 1966 and redeveloped in 2011.
<b>Planned projects</b>	None
<b>System wide context</b>	Columbia Park is categorized as a neighborhood park.
<b>Site context</b>	The park is within a residential area, with homes in all directions.
Impacts to adjacent lands	None identified

(parking, traffic, light and sound)	
Distance from other access points/similar uses and facilities	<ul style="list-style-type: none"> <li>• 0.4 mile walk to McKay Park</li> <li>• 0.4 mile walk to Drake Park</li> <li>• 0.5 mile to Harmon Park</li> </ul>
<b>Opportunities</b>	<ul style="list-style-type: none"> <li>• Riparian and upland vegetation habitat restoration.</li> <li>• The existing access point is eroded, could armor the access to be more sustainable, or close and restore habitat.</li> </ul>

## Existing Conditions for Harmon Park

### Summary

Harmon Park's river access is a small gated, but unlocked dock located along a paver pathway. The remaining river frontage has a chain link fence providing a barrier between the river and playground and ballfields.

### Assessment

<b>Park</b>	<b>Harmon Park</b>
Address	1100 NW Harmon Road
Description	Harmon Park has one access point, a dock. The dock is gated but unlocked. The rest of the river frontage is fenced off with a chain link fence.
<b>Physical characteristics</b>	
Park size	3.75 acres
River frontage	866 feet
Slopes	Flat
<b>Facilities and uses</b>	
Developed park facilities	The park has a paver pathway from the street, past restrooms, a storage shed, and to the gated dock. In addition, the park has two ballfields, a playground and a lawn area.
Typical uses	The dock is used for viewing, wading/swimming and paddleboarders.
Accessible	No
Transportation	Parallel street parking on NW Harmon Boulevard.
View	View of residential neighborhood.
Paddling access	Yes
Fishing access	Yes
Wading/ Swimming access	Yes
Use counts	The <i>Inventory of Recreational Use at Parks on the Deschutes River</i> recorded people crossing in and out of the access point 31 times over 5 hours in summer 2019. No dogs used the access point.
<b>Site history</b>	Acquired in 1925, the park was developed in 1945 and redeveloped in 1999.
<b>Planned projects</b>	None
<b>System wide context</b>	Harmon Park is categorized as a neighborhood park. Other parks with a dock include Pageant, Brooks and Miller's Landing.
<b>Site context</b>	The park is within a residential area and adjacent to Pageant and Drake parks.
Impacts to adjacent lands (parking, traffic, light and sound)	Street parking gets full when events occur at Drake Park, such as Munch 'n Music.
Distance from other access points/similar uses and facilities	<ul style="list-style-type: none"> <li>• Adjacent to Pageant Park</li> <li>• Across the pedestrian bridge to Drake Park</li> <li>• 0.4 miles to Brooks Park</li> <li>• 0.5 miles to Columbia Park</li> </ul>
<b>Opportunities</b>	<ul style="list-style-type: none"> <li>• None identified</li> </ul>



## Existing Conditions for Pageant Park

### Summary

Pageant Park's river access is a small dock located in a grassy lawn near the pedestrian bridge to Drake Park.

### Assessment

<b>Park</b>	<b>Pageant Park</b>
Address	691 Drake Road
Description	Pageant Park has one designated access point at a dock.
<b>Physical characteristics</b>	
Park size	½ acre
River frontage	126 feet
Slopes	Flat
<b>Facilities and uses</b>	
Developed park facilities	The park includes a small dock, a paver path to the footbridge, and a grassy lawn area.
Typical uses	The dock is used by tubers, paddleboarders, boaters and people standing or sitting.
Accessible	No
Transportation	Two head-in accessible parking spaces, plus parallel street parking on NW Drake Rd, and NW Nashville Ave.
View	Views across Mirror Pond to Drake Park.
Paddling access	Yes
Fishing access	Yes
Wading/ Swimming access	Yes
Use counts	The <i>Inventory of Recreational Use at Parks on the Deschutes River</i> recorded people crossing in and out of the access point 149 times over 5 hours in summer 2019. In addition, dogs crossed in and out of the access points 8 times during the same 5 hours.
<b>Site history</b>	Pageant Park was acquired in 1945, developed in 1949 and redeveloped in 1999.
<b>Planned projects</b>	None
<b>System wide context</b>	Pageant Park is categorized as a community park. Other parks with docks include Miller's Landing, Harmon Park and Brooks Park.
<b>Site context</b>	The park is in a residential neighborhood, in the midst of residences and other parks.
Impacts to adjacent lands (parking, traffic, light and sound)	None identified

Distance from other access points/similar uses and facilities	<ul style="list-style-type: none"> <li>• Adjacent to Harmon Park</li> <li>• Across the pedestrian bridge to Drake Park</li> <li>• 0.3 mile to Brooks Park</li> </ul>
<b>Opportunities</b>	<ul style="list-style-type: none"> <li>• None identified</li> </ul>

## Existing Conditions for Brooks Park

### Summary

Brooks Park is a small community park with a memorial plaza and dock to access the river. The access point is the furthest downriver point on Mirror Pond.

### Assessment

<b>Park</b>	<b>Brooks Park</b>
Address	35 NW Drake Park
Description	The small dock at Brooks Park is its only river access point.
<b>Physical characteristics</b>	
Park size	0.68 acres
River frontage	272 feet
Slopes	The park is generally flat.
<b>Facilities and uses</b>	
Developed park facilities	The park includes a memorial plaza, picnic tables, walking paths, and a boat dock.
Typical Uses	In the summer of 2019, the following uses were observed at the access point: paddle boarding, viewing, kayaking/canoeing and tubing/rafting.
Accessible	The walkways are accessible, however, the dock itself is not accessible.
Transportation	The park has street parking only, and is within walking and biking distance of downtown Bend. The park does not have bike racks.
View	Views of the surrounding residential and commercial areas, along with the Newport Avenue Bridge.
Paddling access	Yes
Fishing access	Yes
Wading/Swimming access	No
Use counts	The <i>Inventory of Recreational Use at Parks on the Deschutes River</i> recorded people crossing in and out of the access point 59 times over 5 hours in summer 2019. Dogs crossed the access point 2 times during the same hours.
<b>Site history</b>	The park was a city park starting in 1938 and most recently redeveloped in 2009.
<b>Planned projects</b>	None
<b>System wide context</b>	Other parks with a small dock include Harmon and Pageant parks, both parks are just upstream from Brooks Park.
<b>Site context</b>	The park abuts a residential neighborhood. Newport Avenue is adjacent to the park, and commercial uses exist on the other side of the river.
Impacts to adjacent lands (parking,	None identified

traffic, light and sound)	
Distance from other access points/similar uses and facilities	<ul style="list-style-type: none"> <li>• 0.3 mile walk to Pageant Park</li> <li>• 0.3 mile walk to Drake Park</li> <li>• 0.3 mile walk to Pacific Park</li> </ul>
<b>Opportunities</b>	<ul style="list-style-type: none"> <li>• Brooks Park provides an access point just upstream of the Newport Avenue Dam, and offers over a mile of paddling to the Bend whitewater park.</li> </ul>



## Existing Conditions for Pioneer Park

### Summary

The Deschutes River Trail runs along Pioneer Park at the river, although the park has no designated river access points.

### Assessment

<b>Park</b>	<b>Pioneer Park</b>
Address	1525 Wall Street
Description	The park does not have any designated access points; however, three user-created access points exist. A retaining wall lines the river along Pioneer Park.
<b>Physical characteristics</b>	
Park size	5.13 acres
River frontage	665 feet
Slopes	The park has a gentle slope from the parking lot to river. The park also includes a hill and rock outcrop.
<b>Facilities and uses</b>	
Developed park facilities	The Deschutes River Trail runs through the park, along with other walking paths, benches, picnic shelter, a garden, grassy lawn, restrooms, and parking lot.
Typical Uses	The following uses were observed in summer 2019: dogs swimming and standing close to the river, people swimming, paddle boarding, fishing, and standing close to the river's edge.
Accessible	Accessible parking and restroom improvements completed in 2018.
Transportation	The park has 21 striped parking spaces, including two accessible spaces. In addition, the entry drive allows for approximately 11 parallel parking spaces. The park also has bike racks, and the Deschutes River Trail runs through the park.
View	From the park's peaceful setting, views include the dam, residences, the river and park, and the Portland Avenue bridge.
Paddling access	No
Fishing access	Yes
Wading/Swimming access	No
Use counts	The <i>Inventory of Recreational Use at Parks on the Deschutes River</i> recorded people crossing in and out of the three access points 143 times over 6 hours in summer 2019. Dogs crossed the access points 38 times during the same hours.
<b>Site history</b>	The park was developed in 1923.
<b>Planned projects</b>	None
<b>System wide context</b>	While Pioneer Park does not have river access, it is near several access points at First Street Rapids Park. Pacific Park, which is also nearby, also does not

	have designated access. Pioneer Park is also near the river access at Riverside Natural Area (just north of Pioneer Park).
<b>Site context</b>	The park is adjacent to commercial uses, and across the river from a residential area. River access is not ideal at this location as there are dams upstream and downstream of the park, a distance of 1/3 of a mile between them.
Impacts to adjacent lands (parking, traffic, light and sound)	None identified
Distance from other access points/similar uses and facilities	<ul style="list-style-type: none"> <li>• Riverside Natural Area is adjacent to the park along the Deschutes River Trail.</li> <li>• 0.1 mile walk to First Street Rapids Park along the Deschutes River Trail</li> <li>• 0.2 mile walk to Pacific Park</li> </ul>
<b>Opportunities</b>	<ul style="list-style-type: none"> <li>• Monitor the condition of the seawall.</li> </ul>

## Existing Conditions for First Street Rapids Park and Riverside Natural Area

### Summary

First Street Rapids runs along the east and west sides of the Deschutes River and is popular for river access, relaxation and hiking. The Deschutes River Trail goes through the park from Pioneer Park and eventually connects to Sawyer Park through a combination of easements through the River's Edge Golf Course and sidewalk along Mt. Washington Drive. It also offers fishing, wildlife watching and a nature play area.

Riverside is a narrow strip of land classified as a natural area where the Deschutes River Trail runs through in front of the Riverside Motel and connects Pioneer Park to First Street Rapids Park. A portion of the parcel lies in the flood plain. It includes a boat landing for whitewater paddlers allowing safe passage of the Tumalo Irrigation District dam.

### Assessment

Park	First Street Rapids Park
Address	NW First Street
Description	The park has six designated access areas, and ten areas where visitors have created access points. Riverside Natural Area has one kayak launch access point.
<b>Physical characteristics</b>	
Park size	10.09 acres
River frontage	River right frontage: 1,885 feet River left frontage: 2,643 feet
Slopes	River left has steeper slopes to the water, while river right has a more gradual slope.
<b>Facilities and uses</b>	
Developed park facilities	Park facilities include a footbridge across the river, gravel and paver stone trails, picnic tables, a gravel parking lot, benches, natural play area, and portable toilet.
Typical Uses	In summer 2019, park visitors participated in wading/swimming, fishing, kayaking, dog wading or swimming, and viewing the river from the edge.
Accessible	The Deschutes River trail meets accessibility standards from the parking lot and street, as does the bridge and portable restroom. However, access into the water does not meet accessibility standards.
Transportation	The gravel lot allows for up to three vehicles. The park is also accessible by bike or walking via the Deschutes River Trail. Street parking along First Street is also used by visitors.
View	Views in the park include the rapids, river, large boulders in the water and on the banks, as well as neighboring homes.
Paddling access	Yes
Fishing access	Yes

Wading/Swimming access	Yes
Use counts	<p>The <i>Inventory of Recreational Use at Parks on the Deschutes River</i> recorded people crossing in and out of all 16 access points 623 times over six hours in summer 2019. Dogs crossed over the access points 267 times during the same five hours. The most used access point was river right zone 2; the least used access point is river left zone 1.</p> <p>The Riverside Natural Area access point had zero use during three observation hours over summer 2019.</p>
Site history	The west side of the park was acquired in 1967 and developed in 2001. The east side was acquired in 2006 and developed in 2015. Riverside Natural Area was acquired in 1972 and developed in 2009.
Planned projects	None
System wide context	First Street Rapids Park provides a more natural setting for wading, similar to Sawyer Park. Riverside Natural Area and First Street Rapids also provide rapids that are frequently run by kayakers.
Site context	Residential neighborhoods flank the park on the east and the west sides.
Impacts to adjacent lands (parking, traffic, light and sound)	Some neighbors have noted concerns with parking and congestion on First Street.
Distance from other access points/similar uses and facilities	<ul style="list-style-type: none"> <li>• 0.3 miles to Pioneer Park via Deschutes River Trail</li> <li>• 1.8 miles to Sawyer Park via Deschutes River Trail</li> </ul>
Opportunities	<ul style="list-style-type: none"> <li>• User-created access points along the Deschutes River Trail (river left, downstream from the bridge) are causing erosion of the trail and threatening to expose the piped canal below. A few user-created river access points on river left have been fenced off for restoration.</li> <li>• The edges of the designated access zones could be protected to reduce growth of the access points.</li> </ul>

## Existing Conditions for Riverview Park

### Summary

Riverview Park offers a fishing boardwalk and sees very low use. The park has views of the North Canal dam and headworks for Pilot Butte Canal and North Unit Canal just downstream.

### Assessment

Park	Riverview Park
Address	NE Division St and NE Yale Ave
Description	This half-acre, city-owned property includes a small parking lot, and asphalt path down to a large boardwalk extending over the river. Next to the boardwalk is a user-created access point.
<b>Physical characteristics</b>	
Park size	0.5 acres
River frontage	353 feet
Slopes	The park is sloped from the parking lot to the river.
<b>Facilities and uses</b>	
Developed park facilities	Park facilities include a wooden boardwalk, asphalt trail and parking lot.
Typical Uses	The park's river access points are lightly used for viewing, fishing, and kayak/canoes.
Accessible	An asphalt pathway leads down the slope to the boardwalk, but may not meet accessibility standards. The accessible fishing boardwalk was developed with the support of the Bend Lion's Club.
Transportation	The parking lot includes three parallel parking spots. Sidewalk connects from the south, but does not continue north of the park, and there is no nearby pedestrian crosswalk over Division Street. Division Street has painted bike lanes. The park does not have a bike rack.
View	From the boardwalk, visitors have views of the river, headworks for Pilot Butte Canal and North Unit Canal, and the North Canal dam.
Paddling access	A user-created access point accommodates paddler use.
Fishing access	Yes
Wading/Swimming access	The park is not ideal for wading or swimming, since it is near the dam and canal headworks.
Use counts	At the user-created access point #1, <i>The Inventory of Recreational Use at Parks on the Deschutes River</i> recorded people crossing in and out six times over three hours in summer 2019. Access point #2, the boardwalk, saw eight



	crossings in or out over three hours. No dogs used either access point during these hours.
<b>Site history</b>	Riverview Park was redeveloped in 1999.
<b>Planned projects</b>	None
<b>System wide context</b>	Riverview Park is one of the smallest river parks, and sees low levels of use.
<b>Site context</b>	The surrounding areas include commercial, industrial and residential uses. Division Street is a barrier to use, with only partially completed sidewalks, few crosswalks, and three lanes with higher vehicle speeds.
Impacts to adjacent lands (parking, traffic, light and sound)	None identified
Distance from other access points/similar uses and facilities	<ul style="list-style-type: none"> <li>• 0.9 miles walk to First Street Rapids Park</li> <li>• 0.9 miles to Sawyer Park</li> <li>• 1.0 miles to Pioneer Park</li> </ul>
<b>Opportunities</b>	<ul style="list-style-type: none"> <li>• The surrounding area may see changes due to the potential tax increment financing district, as well as through new city code which would allow high density residential developments to be built in commercial zones. Both changes could improve access to the park and increase the number of nearby residents, however, changes any would likely be many years in the future.</li> </ul>

## Existing Conditions for Sawyer Park

### Summary

Sawyer Park is a community park that sees high use in the summer. River access includes a fisherman's and wildlife watching trail river left and upriver; and several user-created access zones downriver of the footbridge on river left and river right. While some access points are naturally armored with rocks, others are seeing erosion and vegetation trampling.

### Assessment

<b>Park</b>	<b>Sawyer Park</b>
Address	62999 OB Riley Road
Description	Sawyer Park has 12 user-created river access points, with three being larger access "zones."
<b>Physical characteristics</b>	
Park size	53.4 acres
River frontage	2,198 feet on river right, and 2,457 feet on river left
Slopes	The park is generally sloping from the parking lot to the river. It also includes rock cliffs on river right, and a more significant slope from river left and up toward Awbrey Butte.
<b>Facilities and uses</b>	
Developed park facilities	Park facilities include a footbridge across the river, asphalt and natural surface trails, parking lot, picnic areas, drinking fountain and portable toilet.
Typical Uses	In the summer of 2019, park visitors participated in fishing, swimming/wading, letting dogs swim/wade, and viewing the river from the edge.
Accessible	No
Transportation	The parking lot allows for 30 vehicles. The park is also accessible by bike or walking via the Deschutes River Trail but does not have a bike rack. OB Riley Road has bike lanes and sidewalks.
View	The park provides a more natural setting, with views of a canyon wall, rocks, birds, and river.
Paddling access	No
Fishing access	Yes
Wading/Swimming access	Yes
Use counts	The <i>Inventory of Recreational Use at Parks on the Deschutes River</i> recorded people crossing in and out of all 12 access points 433 times over five hours in summer 2019. Dogs crossed over the access points 161 times during the same five hours. The most used access point was river left zone 2; the least used access point is river left zone 1.
<b>Site history</b>	Sawyer Park was developed in 1931 and was part of the state park system, it was acquired by BPRD in 1980.

<b>Planned projects</b>	The parking lot will be moved closer to OB Riley Road, and the current parking lot area will be revegetated. The work is expected to be completed in 2022.
<b>System wide context</b>	Sawyer Park is the second largest river park, following Riley Ranch Nature Reserve. Like the reserve and Farewell Bend Park, it provides a natural setting, buffered from urban development. Similar to south Farewell Bend Park and First Street Rapids Park in that there are many user-created river access points for lounging and enjoying the river alone or with a small group.
<b>Site context</b>	The park is surrounded by residential use on the west, and commercial use on the east.
Impacts to adjacent lands (parking, traffic, light and sound)	None identified
Distance from other access points/similar uses and facilities	<ul style="list-style-type: none"> <li>• 0.9 miles to Riverview Park</li> <li>• 1.7 miles to Riley Ranch Nature Reserve</li> </ul>
<b>Opportunities</b>	<ul style="list-style-type: none"> <li>• There are many access points. Some are armored with existing rocks. Some have become large areas where vegetation has been trampled, also some areas along the fisherman's trail have eroded into a crescent-shaped access point. Opportunity to identify habitat restoration locations and treatments.</li> <li>• Accessibility improvements</li> </ul>

## Existing Conditions for Riley Ranch Nature Reserve

### Summary

Riley Ranch is the district's newest community park, and is located north of Sawyer Park off OB Riley Road. The property is 185 acres divided into an upper and lower section. The upper section has intersecting loop trails, nature viewing, and viewpoints over the river, while river access exists on the lower section down a switchback trail called Robin's Run and connecting to the Canyon Loop Trail. Specific access points have been developed to the river to protect the remaining banks and riparian zones. Because it is a nature reserve, dogs, bikes, and drones are prohibited, and groups are limited to 30 people.

### Assessment

<b>Park</b>	<b>Riley Ranch Nature Reserve</b>
Address	Glen Vista Rd
Description	The park has four access points designated with signs. Four user-created access points are also evident.
<b>Physical characteristics</b>	
Park size	180.9 acres
River frontage	River right frontage: 9,903 feet
Slopes	River access runs along the Canyon Loop Trail, slopes are gradual in this lower area of the park.
<b>Facilities and uses</b>	
Developed park facilities	Park facilities include gravel and natural surface loop trails, river overlooks, benches, interpretive signs, bike racks, restrooms and parking lot.
Typical Uses	During summer 2019, river access was mainly limited to visitors standing near the edge of the river.
Accessible	The upper portion of the park is accessible, but the river access is not.
Transportation	The parking lot has 41 parking spaces; 2 of those are accessible spots. Parking is approximately a mile away from river. Pedestrian access via the Deschutes River Trail from Tumalo State Park.
View	The park provides dramatic views of the river canyon and Cascade Mountain Range. The park features open meadows, juniper and pine forests, unique lava flows, cliffs and the river's rocky canyon, offering experiences unlike other district parks.
Paddling access	No
Fishing access	Yes
Wading/Swimming access	Yes
Use counts	The <i>Inventory of Recreational Use at Parks on the Deschutes River</i> recorded people crossing in and out of all 8 access points 54 times over two hours in summer 2019. Dogs crossed over the access points 2 times during the same

	two hours. The most used access point was #2; the least used access points were #1, 3 and 5.
<b>Site history</b>	The property was acquired in 2011 and developed in 2017.
<b>Planned projects</b>	District plans call for development of the Deschutes River Trail on the west side of the river. This would not occur until the Sand and Gravel mine operation is closed. At that time, a footbridge is also planned to span the river at the north end of the park.
<b>System wide context</b>	River access is unique in the district's river park, as the river is over a mile away from the nearest parking. However, the river corridor and canyon setting is somewhat similar to the experience at Farewell Bend Park's river canyon section.
<b>Site context</b>	The river canyon retains a natural setting, buffered by the park to the east, and undeveloped areas to the west. The property to the west of the river is currently operated as a sand and gravel mine.
Impacts to adjacent lands (parking, traffic, light and sound)	None identified
Distance from other access points/similar uses and facilities	<ul style="list-style-type: none"> <li>• 1.7 miles to Sawyer Park</li> <li>• 3.5 miles along the Deschutes River Trail to Tumalo State Park</li> </ul>
<b>Opportunities</b>	<ul style="list-style-type: none"> <li>• As the newest river park, the reserve has recently been developed and is in good condition. An extensive public outreach process led to its current rules and design. New access is not expected to be needed or addressed at Riley Ranch.</li> <li>• However, when the DRT is extended from Aubrey Meadows to the Coats property and a bridge is built near the State Park and Reserve boundary, new access and loops will be possible.</li> <li>• Opportunity to continue to monitor the user-created access points, and place branches to deter use.</li> </ul>





## **APPENDIX 3**

**INVENTORY OF RECREATIONAL  
USE AT PARKS ON THE DESCHUTES  
RIVER, FEBRUARY 2020**

# Final Report

## Inventory of Recreational Use at Parks on the Deschutes River



February 2020





# Contents

<b>Executive Summary</b>	<b>1</b>
<b>Data Collection Method</b>	<b>5</b>
<b>Inventory of River Use by Park</b>	<b>7</b>
Brooks Park	8
Columbia Park	10
Drake Park	13
Farewell Bend Park	30
Farewell Bend Park (south)	31
Farewell Bend Park (Cedarwood Trailhead)	55
Farewell Bend Park (north)	62
First Street Rapids Park	69
Harmon Park	82
McKay Park	84
Miller's Landing Park	89
Pacific Park	92
Pageant Park	94
Pioneer Park	96
Riley Ranch Nature Reserve	100
Riverbend Park	105
River Rim Park	117
Riverside Natural Area	121
Riverview Park	123
Sawyer Park	126
<b>Survey Overview and Results</b>	<b>138</b>
<b>Appendix A: Data Collection Form</b>	<b>147</b>



# Executive Summary

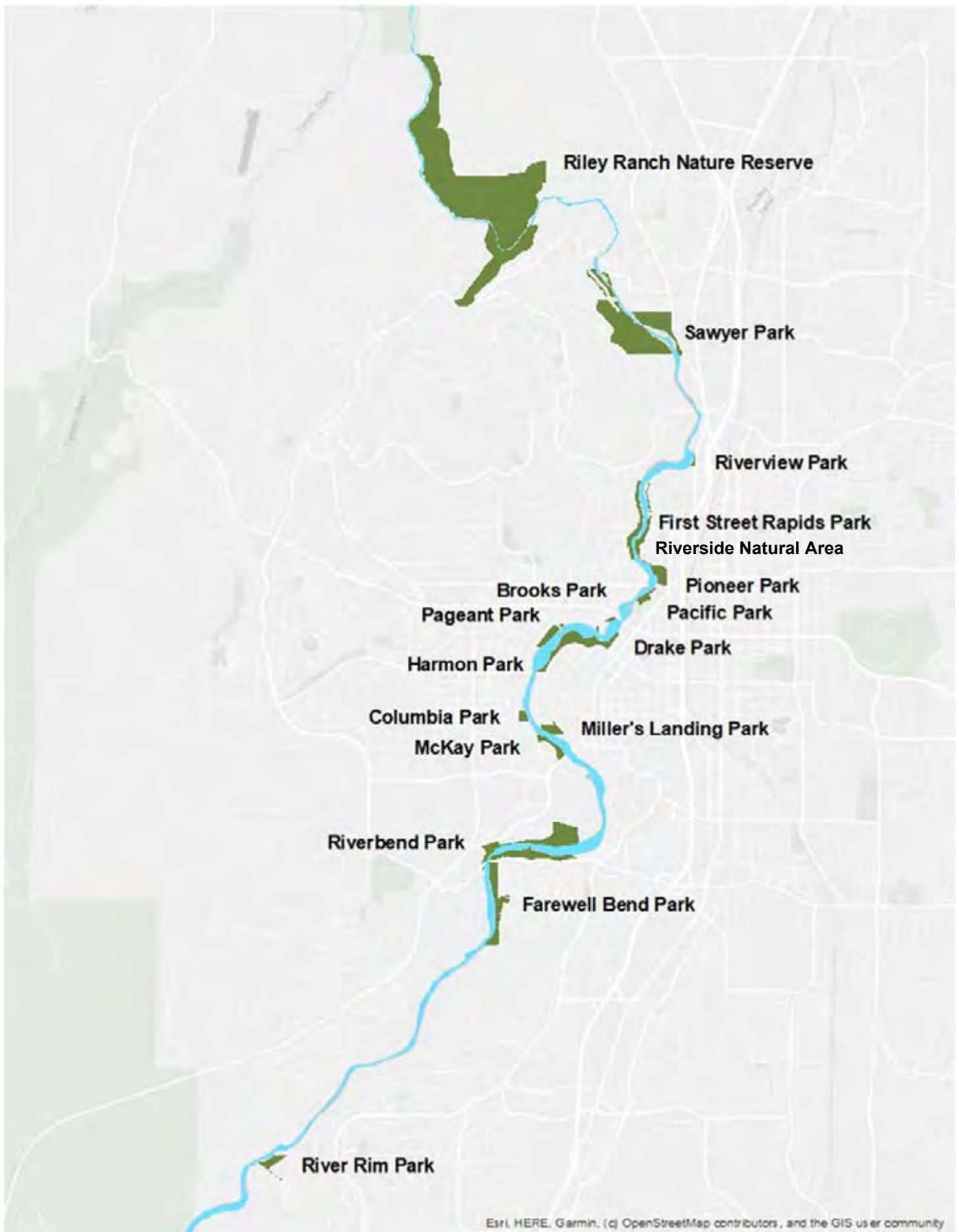
The 17 parks along the Deschutes River are some of the most beloved and highly visited public parks in Bend. The popularity of the river has resulted in impacts along the riverbank such as trampled vegetation and erosion. Continued population and tourism growth are expected to contribute to additional use in the future. A 2017 riparian and upland habitat assessment conducted by the Bend Park and Recreation District (BPRD) documented these impacts. In addition, BPRD's statistically-valid 2017 Community Needs Survey conducted by BPRD identified "areas to access the river" as the highest unmet park and recreation amenity need by the community.

In response, BPRD is beginning to identify future river access and habitat restoration projects. The resulting plan will document existing conditions, incorporate community desires and prioritize future access and restoration projects. As part of the planning effort, BPRD collected river use data at the 17 river parks (see Figure 1 on the following page) during the summer of 2019. (Please note that the 17 parks include Riverside Natural Area, which is sometimes considered part of Pioneer Park.) This report contains those findings and is intended to serve as a resource in understanding where, and how, residents and visitors recreate in the river. The report includes the data collection methodology, observational data, survey responses, the types of recreational use observed at each river access point and corresponding time of day, as well as the outdoor temperature. These data will be further discussed within the access and habitat restoration planning effort, to provide a balance of play and protection for years to come.

Collected data include the number of visitors, number of crossings into or out of each access point, types of use and trip characteristics at 25 designated access points and 94 user-created access points within the 17 parks.

## **Key observational findings include:**

- ◆ The 17 Deschutes River parks contain 25 *designated* access points and 94 *user-created* access points into the river (total 119 access points). Figure 2 depicts the number of access points by park.
- ◆ Observations were taken during the busy summer season in July and August 2019; generally Thursdays through Sundays.
- ◆ During 145 hours of observation, nearly 4,750 people and 450 dogs were observed.
- ◆ The highest use was observed at *designated* access points. Of the designated access points, beaches saw the greatest number of people. Beaches are located at Farewell Bend, Riverbend, McKay, and Drake parks.
- ◆ Excluding beaches, high use at designated access points was observed at Miller's Landing, Columbia, First Street Rapids, and Pageant parks.
- ◆ Only one designated access point had no observed use; this access point is located at Riverside Natural Area (between Pioneer and First Street Rapids parks).
- ◆ For user-created access points, the highest use was observed at Riverbend and First Street Rapids parks.
- ◆ 15 of the user-created access points had no observed use during observations.



*Figure 1: Map of the 17 BPRD parks with recreational access to the Deschutes River*





Figure 2: Map of Deschutes River parks with designated and user-created access points

Park-specific findings may be found in the pages that follow. Each park description includes the total number of designated and user-created access points, the top three recreational activities observed, photographs, and maps of access points. In addition to observational data, staff surveyed 106 river users at 12 parks. Surveys were taken at each park *except* Pioneer, Pacific, Brooks and Harmon parks, and Riverside Natural Area. Key survey findings include:

- ◆ Of those surveyed, 60% live in Bend and an additional 20% live in Oregon.
- ◆ The remaining 20% of those surveyed are residents of California, Washington, Colorado, Texas, Nevada, Illinois, Pennsylvania, New York, New Hampshire, Germany, France and one responded their residency as “van life.”
- ◆ Median group size was three people, with a range in group size from one to 23 people.

**Typical and notable survey responses include:**

What do you like about the river?

“Relaxing”

“Community and atmosphere”

“Part of Bend. It is just what we do”

What would better the river?

“Fewer people”

“Creating jumping spots that are legal”

What do you like about accessing the river here?

“Convenient”

“Easy to get out”

“It’s iconic”

“Came here as kid”

“Easy parking”

What would improve this access point?

“Nothing”

“Fewer people”

“Beer cart/truck/stand”

“More parking”

“Recycling bins”

“Bike racks”

“More benches”

Other comments:

“More unloading zones and monitor them better”

“Need a splash pad”

“Mini lockers at McKay for surfers to safely store keys”

“Place logs at boat accesses to help prevent erosion”

# Data Collection Method

BPRD staff collected river use data between July 3 and August 18, 2019, and typically collected data Thursday through Sunday, 9:00 am to 6:45 pm. These dates, days, and times were chosen based on two years of data from the Bend Whitewater Park's floater channel and portage path trail counters—these dates, days and times saw the most floater and portage path use. All observational data in this report was collected by staff in person at the river parks and marked on a form.

## Definitions

**Designated access point:** a deliberately-created area to enter the river from BPRD property. Access points include beaches, small breaks in fencing, boardwalks, and fishing piers.

**User-created access point:** a place to enter the river created by park visitors and dogs. These points were not created by BPRD. They include small foot trails to the water, or larger areas where the ground is bare soil due to use.

**Access zone:** in collecting summer river use data, some access points were very close together and difficult to differentiate from one another. In those cases, the access points are described as a zone.

**Crossing:** The term “crossing” refers to a person or dog entering or exiting the access point. A person or dog would be counted once for crossing into the access point and once for crossing out of the access point.

**River Left (RL):** when facing downstream, refers to the left bank of the river.

**River Right (RR):** when facing downstream, refers to the right bank of the river.

## Data Collection in Brief

Data were collected at 19 different locations total at 17 parks. One of the parks is Riverside Natural Area, which is a small area between Pioneer Park and First Street Rapids Park. BPRD does not identify Riverside Natural Area on park maps, but since one designated river access point is located in the natural area, it was counted as a park in this report. In addition to the 17 parks, Farewell Bend Park was split into three locations for this study. The three areas are Farewell Bend South, Cedarwood Trailhead, and Farewell Bend North.

BPRD staff typically collected data from 9:00 am to 6:45 pm, Thursday to Sunday, July 3 through August 18, 2019. During these times, the outdoor temperature ranged from 52-94 degrees Fahrenheit. Staff spent a total of 145 hours collecting observational data.

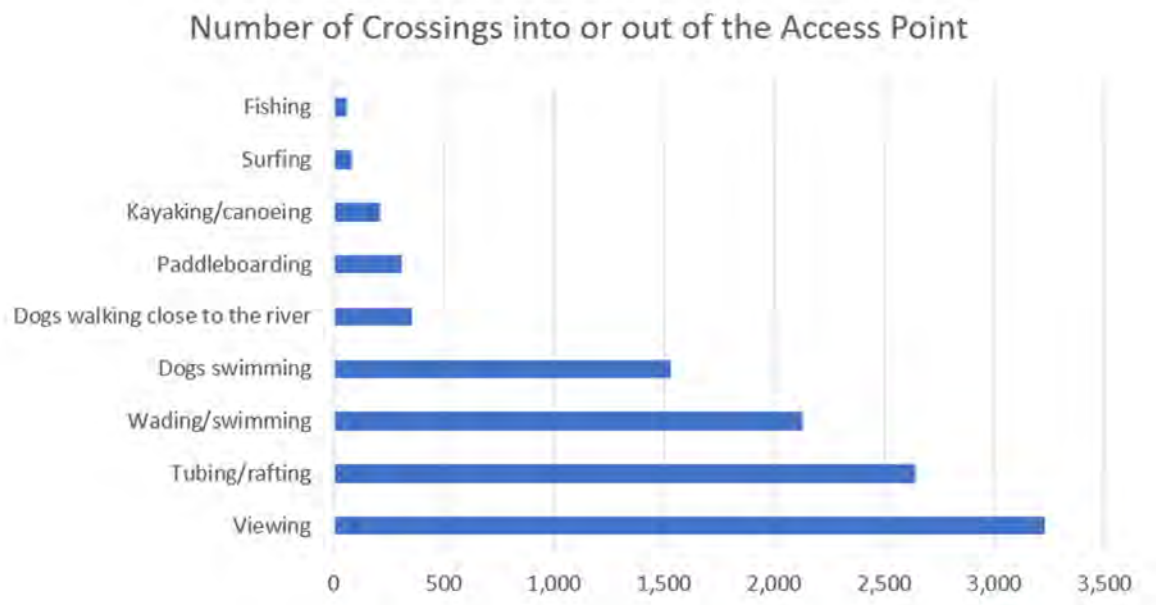
Staff identified 25 BPRD designated access points and 94 user-created access points, for a total of 119 river access points. Note that the 2017 habitat assessment done by BPRD found a greater number of user-created access points. For ease of observation, some of these access points were grouped together in zones. Data were collected from 48 different viewpoints. From the 48 viewpoints, the access points were observed one to six times each for a total of 442 observations.

Staff observed a total of 448 unique dogs and 4,748 unique people. The people and dogs were observed crossing into or out of an access point for a total of 10,548 access point crossings. 16 access points had no observed use, 15 of those were user-created access points. Only one designated access point had no observed use, this occurred at Riverside Natural Area.

Beaches were observed to have the highest levels of use, these include the beaches at Riverbend, Drake, McKay, and Farewell Bend parks. Additionally, the McKay Park fish ladder/ floater rapids area was observed to have a similar high level of use. Other than beaches, the most-used designated access points were access point 1 at Miller's Landing Park (see page 89 for map), access point 2 at Columbia Park (page 10), access points 3 and 4 on river left at First Street Rapids Park (page 70), and the access point at Pageant Park (page 95).

For user-created access points, the most use was observed at First Street Rapids Park on river right upstream and downstream of the footbridge (zones 2 and 3 on page 70, please note that these zones also include designated access points) and at Riverbend Park at the log deck and nearby large access point (access points 8 and 9 on page 106).

Staff recorded observations for nine different recreation activities. The following chart shows the total number of crossings into or out of the access points for each activity and is a total of all observations from July 3 through August 18, 2019.



*Figure 3: Total number of crossings into or out of an access point by recreational activity*

# Inventory of River Use by Park

The following pages include results for the 442 observations taken by BPRD staff. These data are organized alphabetically by park. Please note that data for Farewell Bend Park are organized into three sections: Farewell Bend Park (south), Farewell Bend Park (Cedarwood Trailhead), and Farewell Bend Park (north).

## Data Notes and Legend

Each park has one or more aerial images, which are marked with the access points described in the report. Where access points were too close together to observe differences in use, they were grouped in a “zone”. The general extent of each zone is indicated by the size of the white box which includes the zone number. Due to space constraints, where several access points are nearby, not all access points are numbered; instead a few are numbered and the reader may assume the other numbers are in order. Access points were generally numbered left to right, when standing on the bank, facing the river.

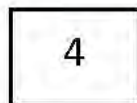
### Legend



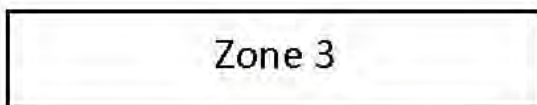
Designated access point or zone



User-created access point or zone



Access point number



Access zone number



Direction of river flow

# Brooks Park

## Summary



- ◆ Total access points: 1
  - Designated points: 1
  - User-created points: 0
- ◆ Top three activities
  - Paddleboards
  - Viewing
  - Kayaks/canoes
- ◆ Busiest day overall
  - Friday, 7/5/2019
  - 3:15 pm - 4:15 pm
  - Sunny
  - 83 degrees Fahrenheit
- ◆ Most used access point: 1
- ◆ Least used access point: N/A



# Brooks Park

## Access Point 1 Details - Designated



<i>Date</i>	<i>Time</i>	<i>Outdoor Temperature</i>	<i>Access Point</i>	<i>Viewing Dogs</i>	<i>Swimming dogs</i>	<i>Viewing</i>	<i>Wading/ Swimming</i>	<i>Tubes/ Rafts</i>	<i>Paddle-boards</i>	<i>Anglers</i>	<i>Kayaks/ Canoes</i>	<i>Other</i>
7/5/2019	3:15-4:15	83	1	0	0	16	0	4	9	0	1	0
7/13/2019	9:00-10:00	66	1	0	0	0	0	0	8	0	6	2 workers helping kayakers
7/25/2019	10:15 - 11:15	69	1	2	0	2	0	0	0	0	0	0
7/28/2019	4:30-5:30	85	1	0	0	2	0	2	6	0	2	0
8/17/2019	5:45-6:45	82	1	0	0	0	0	0	1	0	0	0

# Columbia Park

## Summary



- ◆ Total access points: 2
  - Designated points: 1
  - User-created points: 1
- ◆ Top three activities
  - Wading/swimming
  - Swimming dogs
  - Viewing
- ◆ Busiest day overall
  - Sunday, 8/18/2019
  - 3:15 pm – 4:15 pm
  - Sunny
  - 88 degrees Fahrenheit
- ◆ Most used access point: 2
- ◆ Least used access point: 1

# Columbia Park

## Access Point 1 Details - User created



<i>Date</i>	<i>Time</i>	<i>Outdoor Temperature</i>	<i>Access Point</i>	<i>Viewing Dogs</i>	<i>Swimming dogs</i>	<i>Viewing</i>	<i>Wading/ Swimming</i>	<i>Tubes/ Rafts</i>	<i>Paddle-boards</i>	<i>Anglers</i>	<i>Kayaks/ Canoes</i>	<i>Other</i>
7/11/2019	4:30-5:30	82	1	2	0	7	0	0	0	0	0	0
7/26/2019	2:00-3:00	88	1	0	0	0	0	0	0	0	0	0
8/7/2019	4:30-5:30	94	1	0	9	8	7	0	0	0	0	2 people in area to start
8/15/2019	9:00-10:00	63	1	0	0	0	0	0	0	0	0	0
8/18/2019	3:15-4:15	88	1	0	45	19	4	2	0	0	0	2 power chairs rolled by



# Columbia Park

## Access Point 2 Details - Designated



<i>Date</i>	<i>Time</i>	<i>Outdoor Temperature</i>	<i>Access Point</i>	<i>Viewing Dogs</i>	<i>Swimming dogs</i>	<i>Viewing</i>	<i>Wading/ Swimming</i>	<i>Tubes/ Rafts</i>	<i>Paddle-boards</i>	<i>Anglers</i>	<i>Kayaks/ Canoes</i>	<i>Other</i>
7/26/2019	2:00-3:00	82	2	0	2	8	33	4	0	0	0	20 Jumps from 10 different people
7/11/2019	4:30-5:30	88	2	0	2	9	16	9	0	0	0	Wet gravel. 11 bridge jumps
8/7/2019	4:30-5:30	94	2	0	14	3	24	7	1	0	0	20 jumps by 12 people
8/15/2019	9:00-10:00	63	2	2	0	0	0	0	0	0	0	0
8/18/2019	3:15-4:15	88	2	0	9	9	30	26	1	0	0	47 jumps by 38 people

# Drake Park

## Summary



- ◆ Total access points: 16
  - Designated points: 1
  - User-created points: 15
- ◆ Top three activities
  - Tubes/rafts
  - Viewing
  - Wading/swimming
- ◆ Busiest day overall
  - Sunday, 8/18/2019
  - 2:00 pm – 3:00 pm
  - Sunny
  - 88 degrees Fahrenheit
- ◆ Most used access point: 1
- ◆ Least used access point: 6

# Drake Park

## Access Point 1 Details - Designated



Date	Time	Outdoor Temperature	Access Point	Viewing Dogs	Swimming dogs	Viewing	Wading/ Swimming	Tubes/ Rafts	Paddle-boards	Anglers	Kayaks/ Canoes	Other
7/11/2019	3:15-4:15	81	1	1	14	7	30	229	6	0	3	0
8/1/2019	12:45-1:45	83	1	0	73	8	38	68	6	0	1	0
8/11/2019	4:30-5:30	73	1	0	33	19	6	80	6	0	0	0
8/18/2019	2:00-3:00	88	1	0	25	12	108	365	17	0	7	0



# Drake Park

## Access Point 2 Details - User created



<i>Date</i>	<i>Time</i>	<i>Outdoor Temperature</i>	<i>Access Point</i>	<i>Viewing Dogs</i>	<i>Swimming dogs</i>	<i>Viewing</i>	<i>Wading/ Swimming</i>	<i>Tubes/ Rafts</i>	<i>Paddle-boards</i>	<i>Anglers</i>	<i>Kayaks/ Canoes</i>	<i>Other</i>
7/11/2019	3:15-4:15	81	2	0	0	2	0	2	0	0	0	0
8/1/2019	12:45-1:45	83	2	6	0	14	4	5	0	0	0	0
8/2/2019	5:45-6:45	83	2	2	0	10	4	0	0	2	0	0
8/11/2019	4:30-5:30	73	2	4	0	8	0	0	0	0	0	0
8/18/2019	2:00-3:00	88	2	0	0	24	0	1	0	0	0	0

# Drake Park

## Access Point 3 Details - User created



<i>Date</i>	<i>Time</i>	<i>Outdoor Temperature</i>	<i>Access Point</i>	<i>Viewing Dogs</i>	<i>Swimming dogs</i>	<i>Viewing</i>	<i>Wading/ Swimming</i>	<i>Tubes/ Rafts</i>	<i>Paddle-boards</i>	<i>Anglers</i>	<i>Kayaks/ Canoes</i>	<i>Other</i>
7/13/2019	12:45 - 1:45	77	3	0	2	2	6	2	0	0	1	0
8/1/2019	11:30 - 12:30	78	3	0	0	2	0	0	0	0	0	0
8/2/2019	5:45- 6:45	83	3	0	3	4	0	0	0	0	2	0
8/16/2019	2:00- 3:00	80	3	4	2	10	1	2	0	0	0	0



# Drake Park

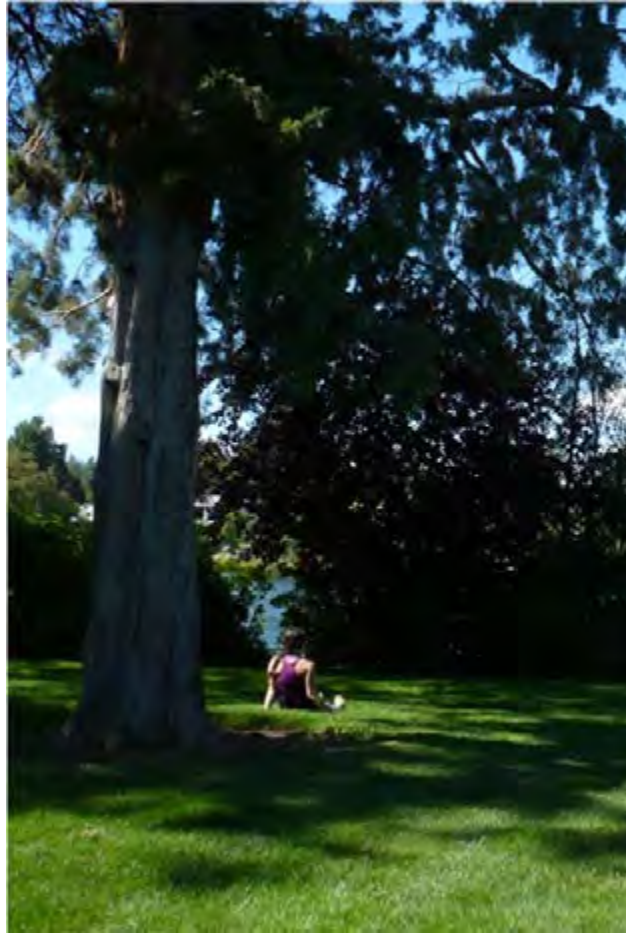
## Access Point 4 Details - User created



<i>Date</i>	<i>Time</i>	<i>Outdoor Temperature</i>	<i>Access Point</i>	<i>Viewing Dogs</i>	<i>Swimming dogs</i>	<i>Viewing</i>	<i>Wading/ Swimming</i>	<i>Tubes/ Rafts</i>	<i>Paddle-boards</i>	<i>Anglers</i>	<i>Kayaks/ Canoes</i>	<i>Other</i>
7/13/2019	12:45 -1:45	77	4	0	0	0	0	0	0	0	0	Man lounging on grass in front of spot till 1:10
8/1/2019	11:30 - 12:30	78	4	0	0	2	0	1	0	0	0	0
8/2/2019	5:45- 6:45	83	4	0	0	0	0	0	0	0	0	0
8/16/2019	2:00- 3:00	80	4	4	0	2	0	0	0	0	0	0

# Drake Park

## Access Point 5 Details - User created



<i>Date</i>	<i>Time</i>	<i>Outdoor Temperature</i>	<i>Access Point</i>	<i>Viewing Dogs</i>	<i>Swimming dogs</i>	<i>Viewing</i>	<i>Wading/ Swimming</i>	<i>Tubes/ Rafts</i>	<i>Paddle-boards</i>	<i>Anglers</i>	<i>Kayaks/ Canoes</i>	<i>Other</i>
7/13/2019	11:30 - 12:30	74	5	0	0	0	0	0	0	0	0	0
7/19/2019	4:30- 5:30	73	5	0	0	0	0	0	0	0	0	0
8/1/2019	11:30 - 12:30	78	5	0	0	0	0	0	0	0	0	0
8/15/2019	12:45 -1:45	80	5	0	0	2	0	0	0	0	0	0

# Drake Park

## Access Point 6 Details - User created



<i>Date</i>	<i>Time</i>	<i>Outdoor Temperature</i>	<i>Access Point</i>	<i>Viewing Dogs</i>	<i>Swimming dogs</i>	<i>Viewing</i>	<i>Wading/ Swimming</i>	<i>Tubes/ Rafts</i>	<i>Paddle-boards</i>	<i>Anglers</i>	<i>Kayaks/ Canoes</i>	<i>Other</i>
7/13/2019	11:30 - 12:30	74	6	0	0	0	0	0	0	0	0	0
7/19/2019	4:30- 5:30	73	6	0	0	0	0	0	0	0	0	0
8/1/2019	11:30 - 12:30	78	6	0	0	0	0	0	0	0	0	0
8/15/2019	12:45 -1:45	80	6	0	0	0	0	0	0	0	0	0

# Drake Park

## Access Point 7 Details - User created



<i>Date</i>	<i>Time</i>	<i>Outdoor Temperature</i>	<i>Access Point</i>	<i>Viewing Dogs</i>	<i>Swimming dogs</i>	<i>Viewing</i>	<i>Wading/ Swimming</i>	<i>Tubes/ Rafts</i>	<i>Paddle-boards</i>	<i>Anglers</i>	<i>Kayaks/ Canoes</i>	<i>Other</i>
7/13/2019	11:30 - 12:30	74	7	0	0	0	0	0	0	0	0	0
7/19/2019	4:30-5:30	73	7	2	0	2	0	0	0	0	0	0
8/1/2019	11:30 - 12:30	78	7	2	0	4	0	0	0	0	0	0
8/15/2019	12:45 -1:45	80	7	0	0	0	0	0	0	0	0	0



# Drake Park

## Access Point 8 Details - User created



<i>Date</i>	<i>Time</i>	<i>Outdoor Temperature</i>	<i>Access Point</i>	<i>Viewing Dogs</i>	<i>Swimming dogs</i>	<i>Viewing</i>	<i>Wading/ Swimming</i>	<i>Tubes/ Rafts</i>	<i>Paddle-boards</i>	<i>Anglers</i>	<i>Kayaks/ Canoes</i>	<i>Other</i>
7/13/2019	11:30 - 12:30	74	8	0	0	0	0	0	0	0	0	0
7/19/2019	4:30-5:30	73	8	0	2	5	0	0	0	0	0	0
8/1/2019	11:30 - 12:30	78	8	2	0	9	0	0	0	0	0	0
8/2/2019	4:30-5:30	86	8	0	0	12	0	0	0	0	0	0
8/15/2019	12:45 -1:45	80	8	0	0	9	0	0	0	0	0	0

# Drake Park

## Access Point 9 Details - User created



<i>Date</i>	<i>Time</i>	<i>Outdoor Temperature</i>	<i>Access Point</i>	<i>Viewing Dogs</i>	<i>Swimming dogs</i>	<i>Viewing</i>	<i>Wading/ Swimming</i>	<i>Tubes/ Rafts</i>	<i>Paddle-boards</i>	<i>Anglers</i>	<i>Kayaks/ Canoes</i>	<i>Other</i>
7/13/2019	10:15 - 11:15	70	9	0	0	0	0	0	0	0	0	0
7/19/2019	3:15-4:15	72	9	0	0	2	0	0	1	0	0	0
8/2/2019	4:30-5:30	86	9	0	6	8	0	0	0	0	0	0
8/10/2019	10:15 - 11:15	58	9	0	0	2	0	0	0	0	0	0

# Drake Park

## Access Point 10 Details - User created



<i>Date</i>	<i>Time</i>	<i>Outdoor Temperature</i>	<i>Access Point</i>	<i>Viewing Dogs</i>	<i>Swimming dogs</i>	<i>Viewing</i>	<i>Wading/ Swimming</i>	<i>Tubes/ Rafts</i>	<i>Paddle-boards</i>	<i>Anglers</i>	<i>Kayaks/ Canoes</i>	<i>Other</i>
7/13/2019	10:15 - 11:15	70	10	0	4	2	0	0	0	0	0	0
7/19/2019	3:15-4:15	72	10	0	0	0	0	0	0	0	0	Hammock set up the whole time
8/2/2019	4:30-5:30	86	10	0	0	0	0	0	0	0	0	0
8/10/2019	10:15 - 11:15	58	10	0	0	0	0	0	0	0	0	0



# Drake Park

## Access Point 11 Details - User created



<i>Date</i>	<i>Time</i>	<i>Outdoor Temperature</i>	<i>Access Point</i>	<i>Viewing Dogs</i>	<i>Swimming dogs</i>	<i>Viewing</i>	<i>Wading/ Swimming</i>	<i>Tubes/ Rafts</i>	<i>Paddle-boards</i>	<i>Anglers</i>	<i>Kayaks/ Canoes</i>	<i>Other</i>
7/13/2019	10:15 - 11:15	70	11	0	0	0	0	0	0	0	0	0
7/19/2019	3:15-4:15	72	11	2	0	6	0	0	0	0	0	0
8/2/2019	4:30-5:30	86	11	0	0	6	0	2	0	0	0	0
8/10/2019	10:15 - 11:15	58	11	0	0	0	0	0	0	0	0	0



# Drake Park

## Access Point 12 Details - User created



<i>Date</i>	<i>Time</i>	<i>Outdoor Temperature</i>	<i>Access Point</i>	<i>Viewing Dogs</i>	<i>Swimming dogs</i>	<i>Viewing</i>	<i>Wading/ Swimming</i>	<i>Tubes/ Rafts</i>	<i>Paddle-boards</i>	<i>Anglers</i>	<i>Kayaks/ Canoes</i>	<i>Other</i>
7/13/2019	10:15 - 11:15	79	12	0	0	4	0	0	0	0	0	2 people laying on grass in front of spot
7/19/2019	3:15-4:15	72	12	0	0	0	0	0	0	0	0	0
8/2/2019	4:30-5:30	72	12	2	0	4	0	0	0	0	0	Family sitting close by

# Drake Park

## Access Point 13 Details - User created



<i>Date</i>	<i>Time</i>	<i>Outdoor Temperature</i>	<i>Access Point</i>	<i>Viewing Dogs</i>	<i>Swimming dogs</i>	<i>Viewing</i>	<i>Wading/ Swimming</i>	<i>Tubes/ Rafts</i>	<i>Paddle-boards</i>	<i>Anglers</i>	<i>Kayaks/ Canoes</i>	<i>Other</i>
7/5/2019	4:30 - 5:30	84	13	4	0	30	10	13	3	0	4	0

# Drake Park

## Access Point 14 Details - User created



<i>Date</i>	<i>Time</i>	<i>Outdoor Temperature</i>	<i>Access Point</i>	<i>Viewing Dogs</i>	<i>Swimming dogs</i>	<i>Viewing</i>	<i>Wading/ Swimming</i>	<i>Tubes/ Rafts</i>	<i>Paddle-boards</i>	<i>Anglers</i>	<i>Kayaks/ Canoes</i>	<i>Other</i>
7/5/2019	3:15-4:15	83	14	2	4	10	8	0	0	0	0	0
7/13/2019	9:00-10:00	66	14	0	0	4	0	0	0	0	0	Orange vest trash picker
7/25/2019	10:15 - 11:15	69	14	0	2	12	0	0	0	0	0	0
7/28/2019	4:30-5:30	85	14	0	0	9	0	0	0	2	0	0
8/17/2019	5:45-6:45	82	14	0	0	28	2	0	0	0	0	0



# Drake Park

## Access Point 15 Details - User created



<i>Date</i>	<i>Time</i>	<i>Outdoor Temperature</i>	<i>Access Point</i>	<i>Viewing Dogs</i>	<i>Swimming dogs</i>	<i>Viewing</i>	<i>Wading/ Swimming</i>	<i>Tubes/ Rafts</i>	<i>Paddle-boards</i>	<i>Anglers</i>	<i>Kayaks/ Canoes</i>	<i>Other</i>
7/5/2019	3:15-4:15	83	15	0	4	10	0	0	0	0	0	0
7/13/2019	9:00-10:00	66	15	0	0	0	0	0	0	0	0	Orange vest trash picker
7/25/2019	10:15 - 11:15	69	15	0	0	0	0	0	0	0	0	0
7/28/2019	4:30-5:30	85	15	0	0	10	0	0	0	0	0	0
8/17/2019	5:45-6:45	82	15	0	0	18	0	0	0	0	0	0

# Drake Park

## Access Point 16 Details - User created



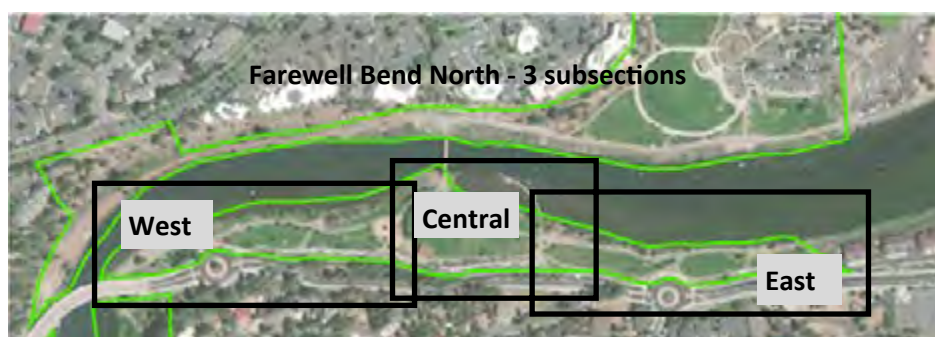
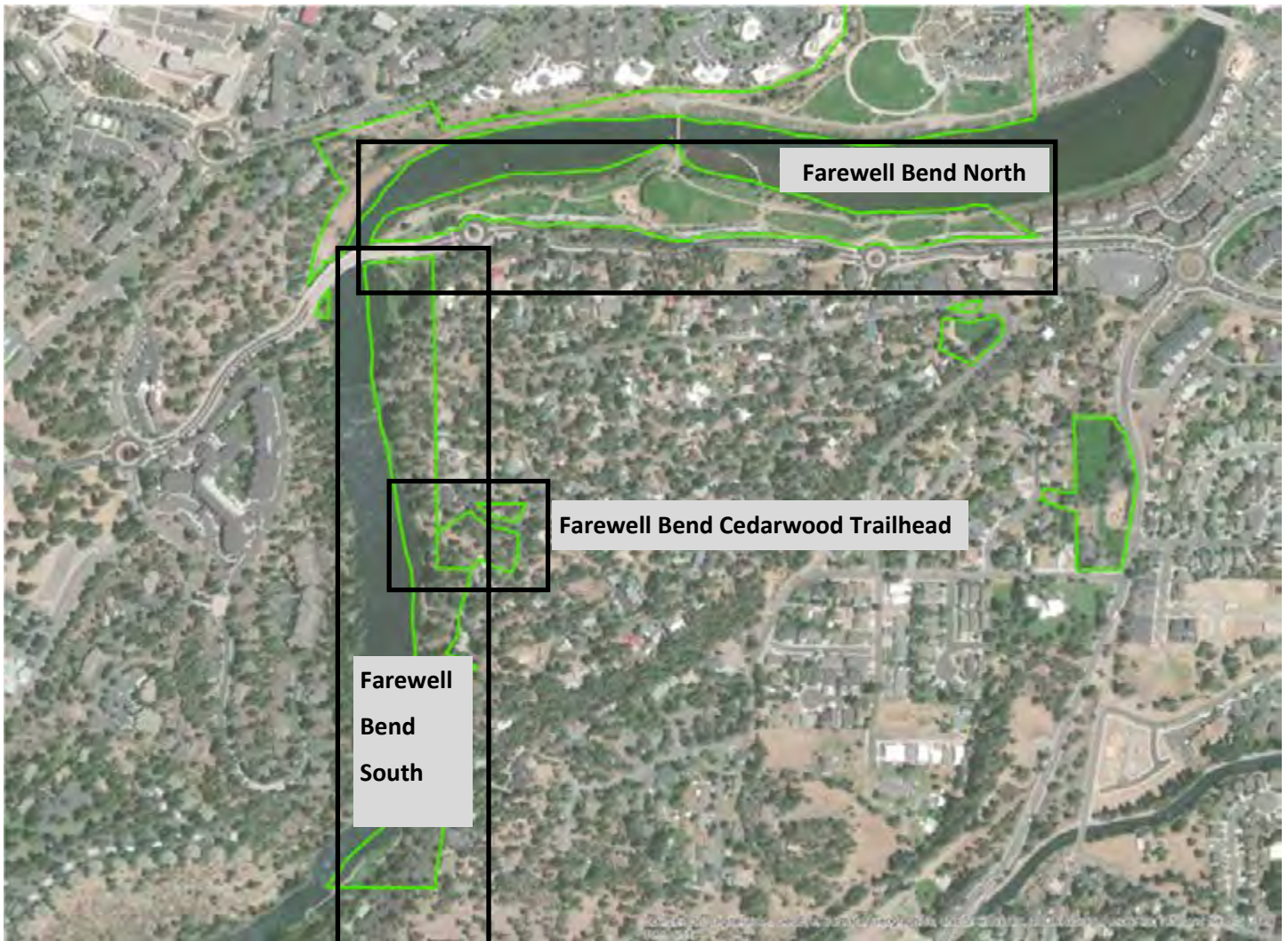
<i>Date</i>	<i>Time</i>	<i>Outdoor Temperature</i>	<i>Access Point</i>	<i>Viewing Dogs</i>	<i>Swimming dogs</i>	<i>Viewing</i>	<i>Wading/ Swimming</i>	<i>Tubes/ Rafts</i>	<i>Paddle-boards</i>	<i>Anglers</i>	<i>Kayaks/ Canoes</i>	<i>Other</i>
7/5/2019	3:15-4:15	83	16	0	0	2	0	0	0	0	0	0
7/13/2019	9:00-10:00	66	16	0	0	10	0	0	0	0	0	Orange vest trash picker
7/25/2019	10:15 - 11:15	69	16	0	0	12	2	0	0	0	0	0
7/28/2019	4:30-5:30	85	16	0	0	11	0	0	0	2	0	0
8/17/2019	5:45-6:45	82	16	2	0	51	0	0	0	2	0	A bunch of kids running around



# Farewell Bend Park

## Summary

Farewell Bend Park was divided into three sections for ease of data collection and display. The sections are: Farewell Bend Park North, Farewell Bend Park Cedarwood Trailhead, and Farewell Bend Park South.



# Farewell Bend Park - South

## Summary



- ◆ Total access points: 23
  - Designated points: 0
  - User-created points: 23
- ◆ Top three activities
  - Viewing
  - Viewing Dogs
  - Swimming dogs
- ◆ Busiest day overall
  - Sunday, 7/21/2019
  - 12:45 pm – 1:45 pm
  - Sunny
  - 76 degrees Fahrenheit
- ◆ Most used access point: 23
- ◆ Least used access points: 2, 3, 4, 5, 8, 16



# Farewell Bend Park - South

## Access Point 1 Details - User created



<i>Date</i>	<i>Time</i>	<i>Outdoor Temperature</i>	<i>Access Point</i>	<i>Viewing Dogs</i>	<i>Swimming dogs</i>	<i>Viewing</i>	<i>Wading/ Swimming</i>	<i>Tubes/ Rafts</i>	<i>Paddle-boards</i>	<i>Anglers</i>	<i>Kayaks/ Canoes</i>	<i>Other</i>
7/12/ 2019	4:30- 5:30	85	1	0	0	0	0	0	0	0	0	0
8/9/ 2019	9:00- 10:00	77	1	2	0	6	0	0	0	0	0	0
8/9/ 2019	2:00- 3:00	63	1	0	0	4	2	0	0	0	0	0
8/17/ 2019	12:45 -1:45	75	1	0	0	9	0	0	0	0	0	0

# Farewell Bend Park - South

## Access Point 2 Details - User created



<i>Date</i>	<i>Time</i>	<i>Outdoor Temperature</i>	<i>Access Point</i>	<i>Viewing Dogs</i>	<i>Swimming dogs</i>	<i>Viewing</i>	<i>Wading/ Swimming</i>	<i>Tubes/ Rafts</i>	<i>Paddle-boards</i>	<i>Anglers</i>	<i>Kayaks/ Canoes</i>	<i>Other</i>
7/12/2019	4:30-5:30	85	2	0	0	0	0	0	0	0	0	0
8/9/2019	9:00-10:00	77	2	0	0	0	0	0	0	0	0	0
8/9/2019	2:00-3:00	63	2	0	0	0	0	0	0	0	0	0
8/17/2019	12:45-1:45	75	2	0	0	0	0	0	0	0	0	0

# Farewell Bend Park - South

## Access Point 3 Details - User created



<i>Date</i>	<i>Time</i>	<i>Outdoor Temperature</i>	<i>Access Point</i>	<i>Viewing Dogs</i>	<i>Swimming dogs</i>	<i>Viewing</i>	<i>Wading/ Swimming</i>	<i>Tubes/ Rafts</i>	<i>Paddle-boards</i>	<i>Anglers</i>	<i>Kayaks/ Canoes</i>	<i>Other</i>
7/12/ 2019	4:30- 5:30	85	3	0	0	0	0	0	0	0	0	0
8/9/ 2019	9:00- 10:00	77	3	0	0	0	0	0	0	0	0	0
8/9/ 2019	2:00- 3:00	63	3	0	0	0	0	0	0	0	0	0
8/17/ 2019	12:45 -1:45	75	3	0	0	0	0	0	0	0	0	0



# Farewell Bend Park - South

## Access Point 4 Details - User created



<i>Date</i>	<i>Time</i>	<i>Outdoor Temperature</i>	<i>Access Point</i>	<i>Viewing Dogs</i>	<i>Swimming dogs</i>	<i>Viewing</i>	<i>Wading/ Swimming</i>	<i>Tubes/ Rafts</i>	<i>Paddle-boards</i>	<i>Anglers</i>	<i>Kayaks/ Canoes</i>	<i>Other</i>
7/12/2019	4:30-5:30	85	4	0	0	0	0	0	0	0	0	0
8/9/2019	9:00-10:00	77	4	0	0	0	0	0	0	0	0	0
8/9/2019	2:00-3:00	63	4	0	0	0	0	0	0	0	0	0
8/17/2019	12:45-1:45	75	4	0	0	0	0	0	0	0	0	0

# Farewell Bend Park - South

## Access Point 5 Details - User created



<i>Date</i>	<i>Time</i>	<i>Outdoor Temperature</i>	<i>Access Point</i>	<i>Viewing Dogs</i>	<i>Swimming dogs</i>	<i>Viewing</i>	<i>Wading/ Swimming</i>	<i>Tubes/ Rafts</i>	<i>Paddle-boards</i>	<i>Anglers</i>	<i>Kayaks/ Canoes</i>	<i>Other</i>
7/12/ 2019	4:30- 5:30	85	5	0	0	0	0	0	0	0	0	0
8/9/ 2019	9:00- 10:00	77	5	0	0	0	0	0	0	0	0	0
8/9/ 2019	2:00- 3:00	63	5	0	0	0	0	0	0	0	0	0
8/17/ 2019	12:45 -1:45	75	5	0	0	0	0	0	0	0	0	0



# Farewell Bend Park - South

## Access Point 6 Details - User created



<i>Date</i>	<i>Time</i>	<i>Outdoor Temperature</i>	<i>Access Point</i>	<i>Viewing Dogs</i>	<i>Swimming dogs</i>	<i>Viewing</i>	<i>Wading/ Swimming</i>	<i>Tubes/ Rafts</i>	<i>Paddle-boards</i>	<i>Anglers</i>	<i>Kayaks/ Canoes</i>	<i>Other</i>
7/12/2019	4:30-5:30	85	6	0	0	6	0	0	0	0	0	0
8/9/2019	9:00-10:00	77	6	0	0	0	0	0	0	0	0	0
8/9/2019	2:00-3:00	63	6	0	0	0	0	0	0	0	0	0
8/17/2019	12:45-1:45	75	6	0	0	0	0	0	0	0	0	0

# Farewell Bend Park - South

## Access Point 7 Details - User created



<i>Date</i>	<i>Time</i>	<i>Outdoor Temperature</i>	<i>Access Point</i>	<i>Viewing Dogs</i>	<i>Swimming dogs</i>	<i>Viewing</i>	<i>Wading/ Swimming</i>	<i>Tubes/ Rafts</i>	<i>Paddle-boards</i>	<i>Anglers</i>	<i>Kayaks/ Canoes</i>	<i>Other</i>
7/12/2019	4:30-5:30	85	7	0	0	0	0	0	0	0	0	0
8/9/2019	9:00-10:00	77	7	0	0	10	0	0	0	0	0	0
8/9/2019	2:00-3:00	63	7	0	0	0	0	0	0	0	0	0
8/17/2019	12:45-1:45	75	7	0	0	0	0	0	0	0	0	0



# Farewell Bend Park - South

## Access Point 8 Details - User created



<i>Date</i>	<i>Time</i>	<i>Outdoor Temperature</i>	<i>Access Point</i>	<i>Viewing Dogs</i>	<i>Swimming dogs</i>	<i>Viewing</i>	<i>Wading/ Swimming</i>	<i>Tubes/ Rafts</i>	<i>Paddle-boards</i>	<i>Anglers</i>	<i>Kayaks/ Canoes</i>	<i>Other</i>
7/12/2019	4:30-5:30	85	8	0	0	0	0	0	0	0	0	0
8/9/2019	9:00-10:00	77	8	0	0	0	0	0	0	0	0	0
8/9/2019	2:00-3:00	63	8	0	0	0	0	0	0	0	0	0
8/17/2019	12:45-1:45	75	8	0	0	0	0	0	0	0	0	0

# Farewell Bend Park - South

## Access Point 9 Details - User created



<i>Date</i>	<i>Time</i>	<i>Outdoor Temperature</i>	<i>Access Point</i>	<i>Viewing Dogs</i>	<i>Swimming dogs</i>	<i>Viewing</i>	<i>Wading/ Swimming</i>	<i>Tubes/ Rafts</i>	<i>Paddle-boards</i>	<i>Anglers</i>	<i>Kayaks/ Canoes</i>	<i>Other</i>
7/12/ 2019	4:30- 5:30	85	9	0	0	0	0	0	0	0	0	0
8/9/ 2019	9:00- 10:00	77	9	0	0	0	0	0	0	0	0	0
8/9/ 2019	2:00- 3:00	63	9	0	0	0	0	0	0	0	0	0
8/17/ 2019	12:45 -1:45	75	9	0	0	1	0	0	0	1	0	0

# Farewell Bend Park - South

## Access Point 10 Details - User created



<i>Date</i>	<i>Time</i>	<i>Outdoor Temperature</i>	<i>Access Point</i>	<i>Viewing Dogs</i>	<i>Swimming dogs</i>	<i>Viewing</i>	<i>Wading/ Swimming</i>	<i>Tubes/ Rafts</i>	<i>Paddle-boards</i>	<i>Anglers</i>	<i>Kayaks/ Canoes</i>	<i>Other</i>
7/12/2019	4:30-5:30	85	10	0	2	2	0	0	0	0	0	0
8/9/2019	9:00-10:00	77	10	0	0	0	0	0	0	0	0	0
8/9/2019	2:00-3:00	63	10	0	0	0	0	0	0	0	0	0
8/17/2019	12:45-1:45	75	10	0	0	10	0	0	0	2	0	0



# Farewell Bend Park - South

## Access Point 11 Details - User created



<i>Date</i>	<i>Time</i>	<i>Outdoor Temperature</i>	<i>Access Point</i>	<i>Viewing Dogs</i>	<i>Swimming dogs</i>	<i>Viewing</i>	<i>Wading/ Swimming</i>	<i>Tubes/ Rafts</i>	<i>Paddle-boards</i>	<i>Anglers</i>	<i>Kayaks/ Canoes</i>	<i>Other</i>
7/12/2019	12:45 -1:45	80	11	2	0	4	0	0	0	0	0	0
7/21/2019	12:45 -1:45	76	11	0	0	4	0	0	0	0	0	0
8/9/2019	10:15 - 11:15	68	11	0	0	0	0	0	0	0	0	0
8/17/2019	2:00-3:00	77	11	0	2	9	0	0	0	0	0	0

# Farewell Bend Park - South

## Access Point 12 Details - User created



<i>Date</i>	<i>Time</i>	<i>Outdoor Temperature</i>	<i>Access Point</i>	<i>Viewing Dogs</i>	<i>Swimming dogs</i>	<i>Viewing</i>	<i>Wading/ Swimming</i>	<i>Tubes/ Rafts</i>	<i>Paddle-boards</i>	<i>Anglers</i>	<i>Kayaks/ Canoes</i>	<i>Other</i>
7/12/2019	12:45 -1:45	80	12	0	2	2	0	0	0	0	0	0
7/21/2019	12:45 -1:45	76	12	2	4	10	0	0	0	1	0	0
8/9/2019	10:15 - 11:15	68	12	0	0	12	0	0	0	0	0	0
8/17/2019	2:00-3:00	77	12	0	0	9	10	0	0	0	0	0



# Farewell Bend Park - South

## Access Point 13 Details - User created



<i>Date</i>	<i>Time</i>	<i>Outdoor Temperature</i>	<i>Access Point</i>	<i>Viewing Dogs</i>	<i>Swimming dogs</i>	<i>Viewing</i>	<i>Wading/ Swimming</i>	<i>Tubes/ Rafts</i>	<i>Paddle-boards</i>	<i>Anglers</i>	<i>Kayaks/ Canoes</i>	<i>Other</i>
7/12/2019	12:45 -1:45	80	13	0	0	4	0	0	0	0	0	0
7/21/2019	12:45 -1:45	76	13	0	0	8	0	0	0	0	0	0
8/9/2019	10:15 - 11:15	68	13	2	0	6	0	0	0	0	0	0
8/17/2019	2:00-3:00	77	13	0	0	2	0	0	0	0	0	0

# Farewell Bend Park - South

## Access Point 14 Details - User created



<i>Date</i>	<i>Time</i>	<i>Outdoor Temperature</i>	<i>Access Point</i>	<i>Viewing Dogs</i>	<i>Swimming dogs</i>	<i>Viewing</i>	<i>Wading/ Swimming</i>	<i>Tubes/ Rafts</i>	<i>Paddle-boards</i>	<i>Anglers</i>	<i>Kayaks/ Canoes</i>	<i>Other</i>
7/12/2019	12:45 -1:45	80	14	0	0	6	0	0	0	0	0	0
7/21/2019	12:45 -1:45	76	14	4	0	6	0	0	0	0	0	0
8/9/2019	10:15 - 11:15	68	14	0	0	0	0	0	0	0	0	0
8/17/2019	2:00-3:00	77	14	0	2	2	0	0	0	0	0	0

# Farewell Bend Park - South

## Access Point 15 Details - User created

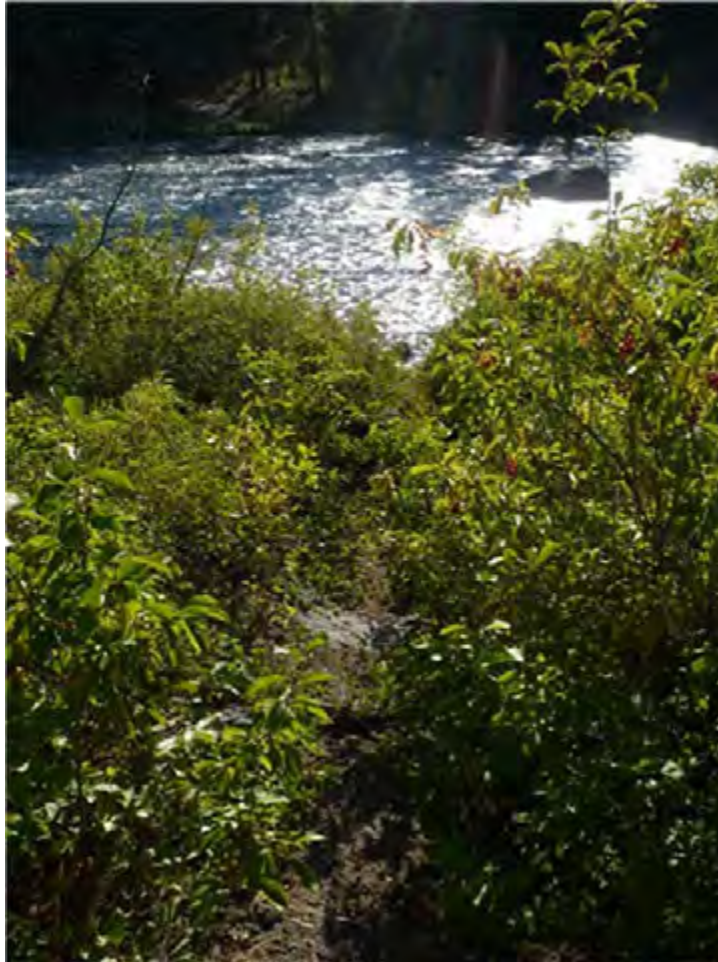


<i>Date</i>	<i>Time</i>	<i>Outdoor Temperature</i>	<i>Access Point</i>	<i>Viewing Dogs</i>	<i>Swimming dogs</i>	<i>Viewing</i>	<i>Wading/ Swimming</i>	<i>Tubes/ Rafts</i>	<i>Paddle-boards</i>	<i>Anglers</i>	<i>Kayaks/ Canoes</i>	<i>Other</i>
7/12/2019	10:15 - 11:15	69	15	0	1	3	0	0	0	0	0	0
8/3/2019	10:15 - 11:15	70	15	0	0	2	0	0	0	0	0	0
8/3/2019	11:30 - 12:30	75	15	2	0	20	0	0	0	0	0	0
8/9/2019	3:15-4:15	80	15	0	0	0	0	0	0	0	0	0
8/15/2019	3:15-4:15	82	15	4	0	4	0	2	0	0	0	0



# Farewell Bend Park - South

## Access Point 16 Details - User created



<i>Date</i>	<i>Time</i>	<i>Outdoor Temperature</i>	<i>Access Point</i>	<i>Viewing Dogs</i>	<i>Swimming dogs</i>	<i>Viewing</i>	<i>Wading/ Swimming</i>	<i>Tubes/ Rafts</i>	<i>Paddle-boards</i>	<i>Anglers</i>	<i>Kayaks/ Canoes</i>	<i>Other</i>
7/12/2019	10:15 - 11:15	69	16	0	0	0	0	0	0	0	0	0
8/3/2019	10:15 - 11:15	70	16	0	0	0	0	0	0	0	0	0
8/9/2019	3:15-4:15	80	16	0	0	0	0	0	0	0	0	0
8/15/2019	3:15-4:15	82	16	0	0	0	0	0	0	0	0	0



# Farewell Bend Park - South

## Access Point 17 Details - User created



<i>Date</i>	<i>Time</i>	<i>Outdoor Temperature</i>	<i>Access Point</i>	<i>Viewing Dogs</i>	<i>Swimming dogs</i>	<i>Viewing</i>	<i>Wading/ Swimming</i>	<i>Tubes/ Rafts</i>	<i>Paddle-boards</i>	<i>Anglers</i>	<i>Kayaks/ Canoes</i>	<i>Other</i>
7/12/ 2019	10:15 - 11:15	69	17	0	0	0	0	0	0	0	0	0
8/3/ 2019	10:15 - 11:15	70	17	0	2	2	2	0	0	0	0	0
8/9/ 2019	3:15- 4:15	80	17	0	0	0	0	0	0	0	0	0
8/15/ 2019	3:15- 4:15	82	17	0	2	4	5	0	0	0	0	0

# Farewell Bend Park - South

## Access Point 18 Details - User created



<i>Date</i>	<i>Time</i>	<i>Outdoor Temperature</i>	<i>Access Point</i>	<i>Viewing Dogs</i>	<i>Swimming dogs</i>	<i>Viewing</i>	<i>Wading/ Swimming</i>	<i>Tubes/ Rafts</i>	<i>Paddle-boards</i>	<i>Anglers</i>	<i>Kayaks/ Canoes</i>	<i>Other</i>
7/6/2019	4:30-5:30	78	18	0	0	0	0	0	0	0	0	0
8/3/2019	4:30-5:30	86	18	0	0	0	0	3	2	0	0	0
8/8/2019	9:00-10:00	67	18	0	0	0	0	0	0	0	0	0
8/15/2019	2:00-3:00	81	18	0	0	0	0	0	1	0	0	0



# Farewell Bend Park - South

## Access Point 19 Details - User created



<i>Date</i>	<i>Time</i>	<i>Outdoor Temperature</i>	<i>Access Point</i>	<i>Viewing Dogs</i>	<i>Swimming dogs</i>	<i>Viewing</i>	<i>Wading/ Swimming</i>	<i>Tubes/ Rafts</i>	<i>Paddle-boards</i>	<i>Anglers</i>	<i>Kayaks/ Canoes</i>	<i>Other</i>
7/6/2019	4:30-5:30	78	19	0	0	0	0	0	0	0	0	0
8/3/2019	4:30-5:30	86	19	0	0	2	0	0	0	0	0	0
8/8/2019	9:00-10:00	67	19	0	0	0	0	0	0	0	0	0
8/15/2019	2:00-3:00	81	19	0	0	0	0	0	0	0	0	0

# Farewell Bend Park - South

## Access Point 20 Details - User created



<i>Date</i>	<i>Time</i>	<i>Outdoor Temperature</i>	<i>Access Point</i>	<i>Viewing Dogs</i>	<i>Swimming dogs</i>	<i>Viewing</i>	<i>Wading/ Swimming</i>	<i>Tubes/ Rafts</i>	<i>Paddle-boards</i>	<i>Anglers</i>	<i>Kayaks/ Canoes</i>	<i>Other</i>
7/6/2019	4:30-5:30	78	20	0	0	4	0	0	0	0	0	0
8/3/2019	4:30-5:30	86	20	0	0	0	0	0	0	0	0	0
8/8/2019	9:00-10:00	67	20	0	0	0	0	0	0	0	0	0
8/15/2019	2:00-3:00	81	20	0	0	0	0	0	0	0	0	0



# Farewell Bend Park - South

## Access Point 21 Details - User created



<i>Date</i>	<i>Time</i>	<i>Outdoor Temperature</i>	<i>Access Point</i>	<i>Viewing Dogs</i>	<i>Swimming dogs</i>	<i>Viewing</i>	<i>Wading/ Swimming</i>	<i>Tubes/ Rafts</i>	<i>Paddle-boards</i>	<i>Anglers</i>	<i>Kayaks/ Canoes</i>	<i>Other</i>
7/6/2019	4:30-5:30	78	21	0	0	0	0	0	0	0	0	0
8/3/2019	4:30-5:30	86	21	0	0	0	0	4	2	0	0	0
8/8/2019	9:00-10:00	67	21	0	0	4	0	0	0	0	0	0
8/15/2019	2:00-3:00	81	21	0	2	4	0	0	0	0	0	0

# Farewell Bend Park - South

## Access Point 22 Details - User created



<i>Date</i>	<i>Time</i>	<i>Outdoor Temperature</i>	<i>Access Point</i>	<i>Viewing Dogs</i>	<i>Swimming dogs</i>	<i>Viewing</i>	<i>Wading/ Swimming</i>	<i>Tubes/ Rafts</i>	<i>Paddle-boards</i>	<i>Anglers</i>	<i>Kayaks/ Canoes</i>	<i>Other</i>
7/6/2019	4:30-5:30	78	22	2	0	8	0	0	0	0	0	0
8/3/2019	4:30-5:30	86	22	0	0	2	0	0	0	0	0	0
8/8/2019	9:00-10:00	67	22	2	0	2	0	0	0	0	0	0
8/15/2019	2:00-3:00	81	22	0	0	0	0	0	0	0	0	0

# Farewell Bend Park - South

## Access Point 23 Details - User created



<i>Date</i>	<i>Time</i>	<i>Outdoor Temperature</i>	<i>Access Point</i>	<i>Viewing Dogs</i>	<i>Swimming dogs</i>	<i>Viewing</i>	<i>Wading/ Swimming</i>	<i>Tubes/ Rafts</i>	<i>Paddle-boards</i>	<i>Anglers</i>	<i>Kayaks/ Canoes</i>	<i>Other</i>
7/6/2019	4:30-5:30	78	23	2	0	18	0	0	0	2	0	2 bridge jumps, 2 people
8/3/2019	4:30-5:30	86	23	0	0	11	1	1	0	0	4	2 bridge jumps, 2 people
8/8/2019	9:00-10:00	67	23	0	2	4	0	0	0	0	0	0
8/15/2019	2:00-3:00	81	23	2	0	10	4	0	0	0	2	11 bridge jumps, 5 people



# Farewell Bend Park - Cedarwood Trailhead

## Summary



Farewell Bend Park – Cedarwood Trailhead

0 100 200 400 Feet

- ◆ Total access points: 6
  - Designated points: 0
  - User-created points: 6
- ◆ Top three activities
  - Viewing
  - Swimming dogs
  - Tubes/rafts
- ◆ Busiest day overall
  - Sunday, 8/18/2019
  - 3:15 pm – 4:15 pm
  - Sunny
  - 88 degrees Fahrenheit
- ◆ Most used access point: 5
- ◆ Least used access point: 4



# Farewell Bend Park - Cedarwood Trailhead

## Access Point 1 Details - User created



<i>Date</i>	<i>Time</i>	<i>Outdoor Tempera- ture</i>	<i>Access Point</i>	<i>Viewing Dogs</i>	<i>Swim- ming dogs</i>	<i>Viewing</i>	<i>Wading/ Swim- ming</i>	<i>Tubes/ Rafts</i>	<i>Paddle- boards</i>	<i>Anglers</i>	<i>Kayaks/ Canoes</i>
7/12/2019	11:30- 12:30	74	1	0	0	0	0	0	0	0	0
7/21/2019	2:00 - 3:00	81	1	0	0	4	0	0	0	0	0
8/2/2019	9:00- 10:00	65	1	2	2	8	0	0	0	0	0
8/3/2019	11:30- 12:30	75	1	2	2	4	0	0	0	0	0

# Farewell Bend Park - Cedarwood Trailhead

## Access Point 2 Details - User created



<i>Date</i>	<i>Time</i>	<i>Outdoor Temperature</i>	<i>Access Point</i>	<i>Viewing Dogs</i>	<i>Swimming dogs</i>	<i>Viewing</i>	<i>Wading/ Swimming</i>	<i>Tubes/ Rafts</i>	<i>Paddleboards</i>	<i>Anglers</i>	<i>Kayaks/ Canoes</i>
7/12/2019	11:30-12:30	74	2	0	0	0	0	0	0	0	0
7/21/2019	2:00-3:00	81	2	0	0	0	0	0	0	2	0
8/2/2019	9:00-10:00	65	2	0	0	0	0	0	0	0	0
8/3/2019	11:30-12:30	75	2	0	0	0	0	0	0	0	0

# Farewell Bend Park - Cedarwood Trailhead

## Access Point 3 Details - User created



<i>Date</i>	<i>Time</i>	<i>Outdoor Tempera- ture</i>	<i>Access Point</i>	<i>Viewing Dogs</i>	<i>Swim- ming dogs</i>	<i>Viewing</i>	<i>Wading/ Swim- ming</i>	<i>Tubes/ Rafts</i>	<i>Paddle- boards</i>	<i>Anglers</i>	<i>Kayaks/ Canoes</i>
7/12/2019	11:30- 12:30	74	3	0	2	6	0	0	2	0	0
7/21/2019	2:00-3:00	81	3	0	0	2	0	13	2	0	0
8/2/2019	9:00- 10:00	65	3	0	0	2	0	0	0	0	0
8/3/2019	11:30- 12:30	75	3	0	0	0	0	4	0	0	2



# Farewell Bend Park - Cedarwood Trailhead

## Access Point 4 Details - User created



<i>Date</i>	<i>Time</i>	<i>Outdoor Tempera- ture</i>	<i>Access Point</i>	<i>Viewing Dogs</i>	<i>Swim- ming dogs</i>	<i>Viewing</i>	<i>Wading/ Swim- ming</i>	<i>Tubes/ Rafts</i>	<i>Paddle- boards</i>	<i>Anglers</i>	<i>Kayaks/ Canoes</i>
7/12/2019	11:30- 12:30	74	4	0	0	0	0	0	0	0	0
7/21/2019	2:00-3:00	81	4	0	0	0	0	0	0	0	0
8/2/2019	9:00- 10:00	65	4	0	0	0	0	0	0	0	0
8/3/2019	11:30- 12:30	75	4	0	0	0	0	0	0	0	0



# Farewell Bend Park - Cedarwood Trailhead

## Access Point 5 Details - User created



<i>Date</i>	<i>Time</i>	<i>Outdoor Tempera- ture</i>	<i>Access Point</i>	<i>Viewing Dogs</i>	<i>Swim- ming dogs</i>	<i>Viewing</i>	<i>Wading/ Swim- ming</i>	<i>Tubes/ Rafts</i>	<i>Paddle- boards</i>	<i>Anglers</i>	<i>Kayaks/ Canoes</i>
7/12/2019	11:30- 12:30	74	5	4	26	12	8	4	0	0	0
7/21/2019	2:00-3:00	81	5	0	0	16	5	10	0	0	2
8/2/2019	9:00- 10:00	65	5	4	22	8	0	0	0	0	0
8/3/2019	11:30- 12:30	75	5	6	0	10	2	0	0	0	0

# Farewell Bend Park - Cedarwood Trailhead

## Access Point 6 Details - User created



<i>Date</i>	<i>Time</i>	<i>Outdoor Tempera- ture</i>	<i>Access Point</i>	<i>Viewing Dogs</i>	<i>Swim- ming dogs</i>	<i>Viewing</i>	<i>Wading/ Swim- ming</i>	<i>Tubes/ Rafts</i>	<i>Paddle- boards</i>	<i>Anglers</i>	<i>Kayaks/ Canoes</i>
7/12/2019	11:30- 12:30	74	6	0	0	4	0	8	0	0	0
7/21/2019	2:00-3:00	81	6	0	4	10	8	17	1	0	0
8/2/2019	9:00- 10:00	65	6	0	4	6	0	0	0	0	0
8/3/2019	11:30- 12:30	75	6	8	4	32	0	0	0	0	0



# Farewell Bend Park - North

## Summary



Farewell Bend Park - West



Farewell Bend Park - Central

# Farewell Bend Park - North

Summary continued



- ◆ Total access points: 6
  - Designated points: 2
  - User-created points: 4
- ◆ Top three activities
  - Wading/swimming
  - Viewing
  - Swimming dogs
- ◆ Busiest day overall
  - Sunday, 7/21/2019
  - 5:45 pm – 6:45 pm
  - Sunny
  - 87 degrees Fahrenheit
- ◆ Most used access point: 1
- ◆ Least used access points: 3, 4, 5a



# Farewell Bend Park - North

## Access Point 1 Details - Designated



<i>Date</i>	<i>Time</i>	<i>Outdoor Temperature</i>	<i>Access Point</i>	<i>Viewing Dogs</i>	<i>Swimming dogs</i>	<i>Viewing</i>	<i>Wading/ Swimming</i>	<i>Tubes/ Rafts</i>	<i>Paddle-boards</i>	<i>Anglers</i>	<i>Kayaks/ Canoes</i>	<i>Other</i>
7/3/2019	2:30-3:30	68	1	5	7	41	106	0	3	0	1	0
7/6/2019	10:15 - 11:15	67	1	4	39	51	63	10	7	0	6	2 Bikes, 1 person
7/21/2019	5:45-6:45	87	1	2	8	9	139	15	5	0	4	0
8/2/2019	10:15 - 11:15	70	1	0	4	24	99	2	17	0	6	0

# Farewell Bend Park - North

## Access Points 2 and 3 Details - User created



Date	Time	Outdoor Temperature	Access Point	Viewing Dogs	Swimming dogs	Viewing	Wading/ Swimming	Tubes/ Rafts	Paddle-boards	Anglers	Kayaks/ Canoes	Other
7/6/2019	3:15-4:15	78	2	0	0	5	0	0	0	0	0	0
7/25/2019	4:30-5:30	88	2	0	6	4	0	0	0	0	1	0
8/8/2019	10:15 - 11:15	71	2	0	0	2	0	0	0	0	0	0
7/6/2019	3:15-4:15	78	3	0	0	0	0	0	0	0	0	0
7/25/2019	4:30-5:30	88	3	0	0	0	0	0	0	0	0	0
8/8/2019	10:15 - 11:15	71	3	0	0	0	0	0	0	0	0	0

# Farewell Bend Park - North

## Access Point 4 Details - User created



<i>Date</i>	<i>Time</i>	<i>Outdoor Temperature</i>	<i>Access Point</i>	<i>Viewing Dogs</i>	<i>Swimming dogs</i>	<i>Viewing</i>	<i>Wading/ Swimming</i>	<i>Tubes/ Rafts</i>	<i>Paddle-boards</i>	<i>Anglers</i>	<i>Kayaks/ Canoes</i>	<i>Other</i>
7/21/2019	10:15 - 11:15	69	4	0	0	0	0	0	0	0	0	4 people inside picnic shelter from 10:30 onward
8/9/2019	11:30 - 12:30	72	4	0	0	0	0	0	0	0	0	0
8/16/2019	10:15 - 11:15	63	4	0	0	0	0	0	0	0	0	0



# Farewell Bend Park - North

## Access Point 5a and 5b Details - User created



<i>Date</i>	<i>Time</i>	<i>Outdoor Temperature</i>	<i>Access Point</i>	<i>Viewing Dogs</i>	<i>Swimming dogs</i>	<i>Viewing</i>	<i>Wading/ Swimming</i>	<i>Tubes/ Rafts</i>	<i>Paddle-boards</i>	<i>Anglers</i>	<i>Kayaks/ Canoes</i>	<i>Other</i>
7/21/2019	10:15 - 11:15	69	5a	0	0	0	0	0	0	0	0	0
8/9/2019	11:30 - 12:30	72	5a	0	0	0	0	0	0	0	0	0
8/16/2019	10:15 - 11:15	63	5a	0	0	0	0	0	0	0	0	0
7/21/2019	10:15 - 11:15	69	5b	0	0	4	0	0	0	0	0	Can see trash
8/9/2019	11:30 - 12:30	72	5b	0	0	0	0	0	0	0	0	0
8/16/2019	10:15 - 11:15	63	5b	0	0	0	0	0	0	0	0	0



# Farewell Bend Park - North

## Access Point 6 Details - Designated

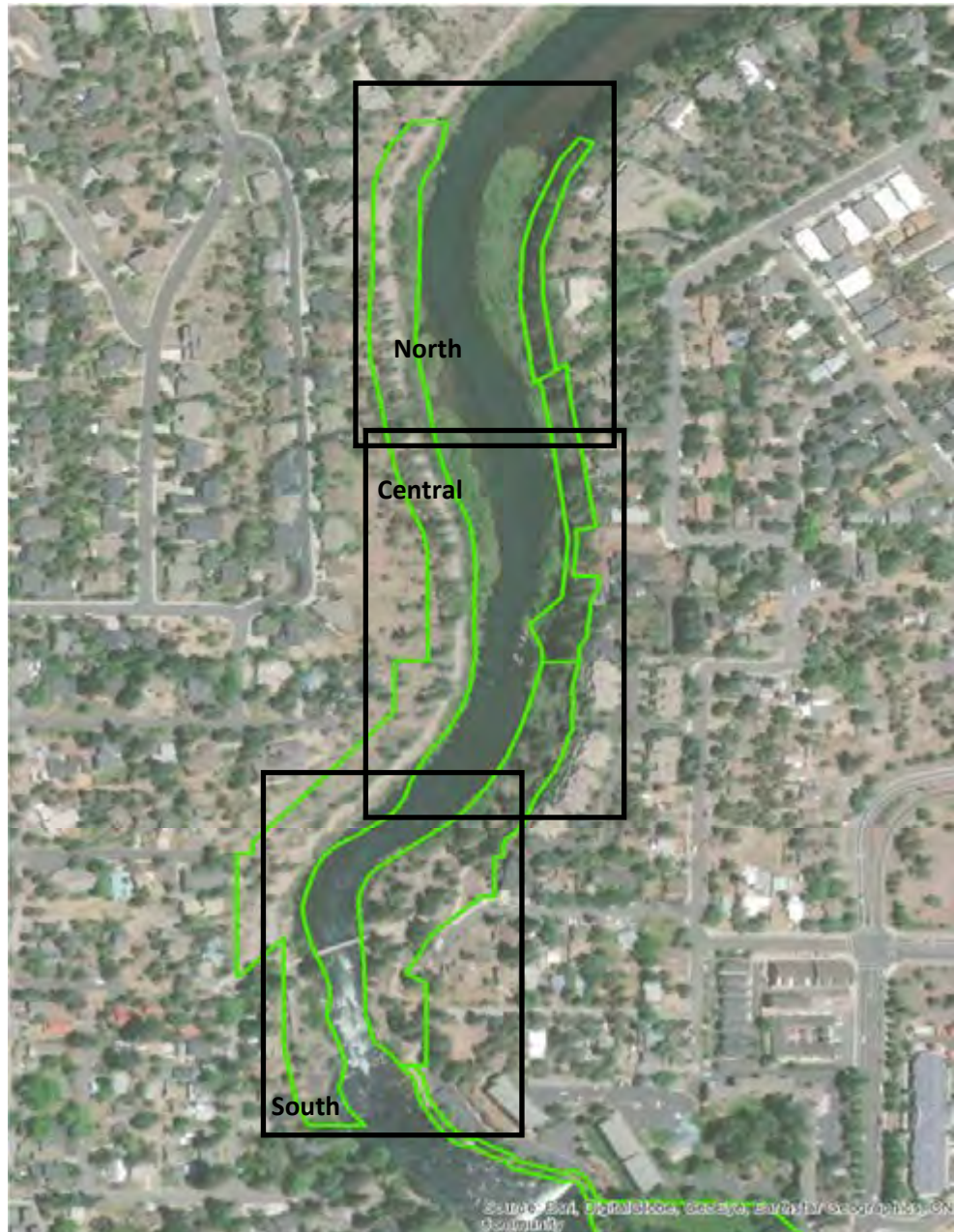


<i>Date</i>	<i>Time</i>	<i>Outdoor Temperature</i>	<i>Access Point</i>	<i>Viewing Dogs</i>	<i>Swimming dogs</i>	<i>Viewing</i>	<i>Wading/ Swimming</i>	<i>Tubes/ Rafts</i>	<i>Paddle-boards</i>	<i>Anglers</i>	<i>Kayaks/ Canoes</i>	<i>Other</i>
6/28/2019	12:00 - 1:00	62	6	0	2	4	0	0	0	0	0	0
7/5/2019	5:45- 6:45	82	6	0	0	4	2	0	3	0	0	0
7/6/2019	12:45 -1:45	75	6	0	0	6	2	1	6	0	3	0
7/11/2019	5:45- 6:45	82	6	2	6	4	3	0	7	0	0	0
7/25/2019	5:45- 6:45	87	6	4	16	16	4	0	4	0	2	0

# First Street Rapids

## Summary

First Street Rapids Park was divided into three sections for display. The sections are: south, central and north.





# First Street Rapids

## Summary



1st Street Rapids Park - South



1st Street Rapids Park - Central



# First Street Rapids

## Summary continued



- ◆ Total access points: 16
  - Designated points: 6
  - User-created points: 10
- ◆ Top three activities
  - Swimming/Wading
  - Viewing
  - Swimming dogs
- ◆ Busiest day overall
  - Saturday, 7/27/2019
  - 4:30 pm – 5:30 pm
  - Sunny
  - 84 degrees Fahrenheit
- ◆ Most used access point: RR Zone 2
- ◆ Least used access point: RL Zone 1



# First Street Rapids

## Access Point RL Zone 1 Details - User created



<i>Date</i>	<i>Time</i>	<i>Outdoor Temperature</i>	<i>Access Point</i>	<i>Viewing Dogs</i>	<i>Swimming dogs</i>	<i>Viewing</i>	<i>Wading/ Swimming</i>	<i>Tubes/ Rafts</i>	<i>Paddle-boards</i>	<i>Anglers</i>	<i>Kayaks/ Canoes</i>	<i>Other</i>
8/11/ 2019	2:00- 3:00	68	RL Zone 1	0	0	0	0	0	0	0	0	0

# First Street Rapids

## Access Point RL 2 Details - User created



<i>Date</i>	<i>Time</i>	<i>Outdoor Temperature</i>	<i>Access Point</i>	<i>Viewing Dogs</i>	<i>Swimming dogs</i>	<i>Viewing</i>	<i>Wading/ Swimming</i>	<i>Tubes/ Rafts</i>	<i>Paddle-boards</i>	<i>Anglers</i>	<i>Kayaks/ Canoes</i>	<i>Other</i>
7/5/2019	10:15 - 11:15	70	RL 2	0	0	0	0	0	0	0	0	0
7/14/2019	11:30 - 12:30	72	RL 2	0	0	0	0	0	0	1	0	0
7/14/2019	2:00-3:00	80	RL 2	0	0	0	0	0	0	0	0	1 WWSR class member
7/27/2019	2:00-3:00	82	RL 2	0	0	0	0	0	0	0	0	0
7/28/2019	9:00-10:00	64	RL 2	0	0	0	0	0	0	0	0	0

# First Street Rapids

## Access Point RL 3 Details - Designated



<i>Date</i>	<i>Time</i>	<i>Outdoor Temperature</i>	<i>Access Point</i>	<i>Viewing Dogs</i>	<i>Swimming dogs</i>	<i>Viewing</i>	<i>Wading/ Swimming</i>	<i>Tubes/ Rafts</i>	<i>Paddle-boards</i>	<i>Anglers</i>	<i>Kayaks/ Canoes</i>	<i>Other</i>
7/5/2019	10:15 - 11:15	70	RL 3	4	6	12	0	0	0	0	0	0
7/14/2019	11:30 - 12:30	72	RL 3	0	6	13	4	0	0	0	0	0
7/14/2019	2:00-3:00	80	RL 3	4	8	4	10	0	0	0	0	20 White Water Safety & Rescue
7/27/2019	3:15-4:15	84	RL 3	2	24	5	49	0	0	0	0	0
7/28/2019	9:00-10:00	64	RL 3	0	3	6	0	0	0	0	3	WWK Training in water



# First Street Rapids

## Access Point RL 4 Details - Designated



<i>Date</i>	<i>Time</i>	<i>Outdoor Temperature</i>	<i>Access Point</i>	<i>Viewing Dogs</i>	<i>Swimming dogs</i>	<i>Viewing</i>	<i>Wading/ Swimming</i>	<i>Tubes/ Rafts</i>	<i>Paddle-boards</i>	<i>Anglers</i>	<i>Kayaks/ Canoes</i>	<i>Other</i>
7/14/2019	2:00-3:00	80	RL 4	1	0	6	18	0	0	0	0	0
7/27/2019	3:15-4:15	84	RL 4	0	20	13	43	0	0	0	0	0
7/28/2019	9:00-10:00	64	RL 4	0	2	4	0	0	0	0	0	0



# First Street Rapids

## Access Point RL 5 Details - Designated



<i>Date</i>	<i>Time</i>	<i>Outdoor Temperature</i>	<i>Access Point</i>	<i>Viewing Dogs</i>	<i>Swimming dogs</i>	<i>Viewing</i>	<i>Wading/ Swimming</i>	<i>Tubes/ Rafts</i>	<i>Paddle-boards</i>	<i>Anglers</i>	<i>Kayaks/ Canoes</i>	<i>Other</i>
7/5/2019	11:30 - 12:30	75	RL 5	0	0	4	0	0	0	0	0	0
7/27/2019	3:15-4:15	84	RL 5	0	0	0	4	0	0	0	0	0
7/27/2019	4:30-5:30	84	RL 5	2	0	4	0	0	0	0	0	0
7/28/2019	10:15 - 11:15	67	RL 5	2	0	5	0	0	0	0	0	0
7/28/2019	9:00-10:00	64	RL 5	0	0	3	0	0	0	0	0	0
8/18/2019	12:45 -1:45	83	RL 5	4	0	6	0	0	0	0	0	0

# First Street Rapids

## Access Point RR 1 Details - User created



<i>Date</i>	<i>Time</i>	<i>Outdoor Temperature</i>	<i>Access Point</i>	<i>Viewing Dogs</i>	<i>Swimming dogs</i>	<i>Viewing</i>	<i>Wading/ Swimming</i>	<i>Tubes/ Rafts</i>	<i>Paddle-boards</i>	<i>Anglers</i>	<i>Kayaks/ Canoes</i>	<i>Other</i>
7/5/2019	11:30 - 12:30	75	RR 1	0	0	4	0	0	0	0	0	0
7/14/2019	12:45 - 1:45	76	RR 1	2	0	2	0	0	0	0	0	0
7/27/2019	4:30- 5:30	84	RR 1	0	2	0	8	0	0	0	0	0
7/28/2019	10:15 - 11:15	67	RR 1	0	0	4	0	0	0	0	0	0
8/18/2019	12:45 - 1:45	83	RR 1	0	2	4	0	0	0	0	0	0

# First Street Rapids

## Access Point RR Zone 2 Details - User created and Designated



<i>Date</i>	<i>Time</i>	<i>Outdoor Temperature</i>	<i>Access Point</i>	<i>Viewing Dogs</i>	<i>Swimming dogs</i>	<i>Viewing</i>	<i>Wading/ Swimming</i>	<i>Tubes/ Rafts</i>	<i>Paddle-boards</i>	<i>Anglers</i>	<i>Kayaks/ Canoes</i>	<i>Other</i>
7/5/2019	11:30 - 12:30	75	RR 2	6	36	5	15	0	0	0	0	0
7/14/2019	12:45 - 1:45	76	RR 2	1	40	13	51	0	0	0	0	0
7/27/2019	4:30- 5:30	84	RR 2	4	27	13	62	0	0	0	0	2 bridge jumps
7/28/2019	10:15 - 11:15	67	RR 2	0	0	11	5	0	0	0	0	0
8/18/2019	12:45 - 1:45	83	RR 2	4	9	19	21	0	0	0	0	0



# First Street Rapids

## Access Point RR Zone 3 Details - User created



This zone excludes designated access point 3a. Data for 3a may be found on the next page.

<i>Date</i>	<i>Time</i>	<i>Outdoor Temperature</i>	<i>Access Point</i>	<i>Viewing Dogs</i>	<i>Swimming dogs</i>	<i>Viewing</i>	<i>Wading/ Swimming</i>	<i>Tubes/ Rafts</i>	<i>Paddle-boards</i>	<i>Anglers</i>	<i>Kayaks/ Canoes</i>	<i>Other</i>
7/5/2019	10:15 - 11:15	70	RR 3	0	0	10	0	0	0	0	0	JW RR by the bridge
7/14/2019	11:30 - 12:30	72	RR 3	2	1	14	30	0	0	0	0	0
7/27/2019	2:00-3:00	82	RR 3	1	24	10	38	0	0	0	0	0
7/28/2019	11:30 - 12:30	74	RR 3	2	8	4	24	0	0	0	0	0



# First Street Rapids

## Access Point RR 3a Details - Designated



<i>Date</i>	<i>Time</i>	<i>Outdoor Temperature</i>	<i>Access Point</i>	<i>Viewing Dogs</i>	<i>Swimming dogs</i>	<i>Viewing</i>	<i>Wading/ Swimming</i>	<i>Tubes/ Rafts</i>	<i>Paddle-boards</i>	<i>Anglers</i>	<i>Kayaks/ Canoes</i>	<i>Other</i>
7/5/2019	10:15 - 11:15	70	RR 3a	0	0	2	0	0	0	0	0	JW RR by the bridge
7/14/2019	11:30 - 12:30	72	RR 3a	0	0	4	0	0	0	0	0	0
7/27/2019	2:00-3:00	82	RR 3a	2	0	10	0	0	0	0	0	0
7/28/2019	11:30 - 12:30	74	RR 3a	2	0	10	0	0	0	0	0	0

# First Street Rapids

## Access Point RR 4 Details - User created



<i>Date</i>	<i>Time</i>	<i>Outdoor Temperature</i>	<i>Access Point</i>	<i>Viewing Dogs</i>	<i>Swimming dogs</i>	<i>Viewing</i>	<i>Wading/ Swimming</i>	<i>Tubes/ Rafts</i>	<i>Paddle-boards</i>	<i>Anglers</i>	<i>Kayaks/ Canoes</i>	<i>Other</i>
7/5/2019	10:15 - 11:15	70	RR 4	0	0	0	0	0	0	0	0	JW RR by the bridge
7/14/2019	11:30 - 12:30	72	RR 4	0	0	5	4	0	0	0	0	0
7/27/2019	2:00-3:00	82	RR 4	0	0	0	0	0	0	0	0	5 people & 1 dog past AP 4 by rock
7/28/2019	11:30 - 12:30	74	RR 4	0	4	0	4	0	0	0	0	0

# Harmon Park

## Summary



- ◆ Total access points: 1
  - Designated points: 1
  - User-created points: 0
- ◆ Top three activities
  - Viewing
  - Wading/swimming
  - Paddleboards
- ◆ Busiest day overall
  - Friday, 7/19/2019
  - 3:15 pm – 4:15 pm
  - Sunny
  - 72 degrees Fahrenheit
- ◆ Most used access point: 1
- ◆ Least used access point: N/A



# Harmon Park

## Access Point 1 - Designated



<i>Date</i>	<i>Time</i>	<i>Outdoor Temperature</i>	<i>Access Point</i>	<i>Viewing Dogs</i>	<i>Swimming dogs</i>	<i>Viewing</i>	<i>Wading/ Swimming</i>	<i>Tubes/ Rafts</i>	<i>Paddle-boards</i>	<i>Anglers</i>	<i>Kayaks/ Canoes</i>	<i>Other</i>
7/13/2019	11:30 - 12:30	74	1	0	0	1	0	0	6	0	1	0
7/19/2019	3:15-4:15	72	1	0	0	0	8	0	1	0	0	0
8/9/2019	5:45-6:45	63	1	0	0	0	0	0	0	0	0	1 WWSR class member
8/10/2019	10:15 - 11:15	58	1	0	0	4	0	0	0	0	0	0
8/15/2019	12:45 -1:45	80	1	0	0	5	0	0	0	0	0	0



# McKay Park

## Summary



- ◆ Total access points: 2
  - Designated points: 2
  - User-created points: 0
- ◆ Top three activities
  - Tubes/rafts
  - Viewing
  - Wading/swimming
- ◆ Busiest day overall
  - Friday, 7/19/2019
  - 5:45 pm – 6:45 pm
  - Sunny
  - 70 degrees Fahrenheit
- ◆ Most used access point: 2
- ◆ Least used access point: 1

# McKay Park

## Access Point 1 - Designated



<i>Date</i>	<i>Time</i>	<i>Outdoor Temperature</i>	<i>Access Point</i>	<i>Viewing Dogs</i>	<i>Swimming dogs</i>	<i>Viewing</i>	<i>Wading/ Swimming</i>	<i>Tubes/ Rafts</i>	<i>Paddle-boards</i>	<i>Kayaks/ Canoes</i>	<i>Surfers</i>	<i>Other</i>
7/4/2019	10:15 - 11:16	64	1	6	96	55	59	2	4	2	0	0
7/7/2019	11:30 - 12:30	64	1	0	5	51	90	6	1	9	1	0
7/19/2019	5:45-6:45	70	1	0	2	82	83	53	4	3	3	6 snorkelers
8/10/2019	9:00-10:00	55	1	4	31	46	1	0	0	12	3	0

# McKay Park

## Access Zone 2 - Designated



<i>Date</i>	<i>Time</i>	<i>Outdoor Temperature</i>	<i>Access Point</i>	<i>Viewing Dogs</i>	<i>Swimming dogs</i>	<i>Viewing</i>	<i>Wading/ Swimming</i>	<i>Tubes/ Rafts</i>	<i>Paddle-boards</i>	<i>Anglers</i>	<i>Kayaks/ Canoes</i>	<i>Surfers</i>
7/4/2019	10:15 - 11:16	64	Zone 2	8	11	84	6	0	0	0	2	32
7/7/2019	11:30 - 12:30	64	Zone 2	0	39	80	17	5	0	0	0	19

# McKay Park

## Access Zone 2 - Designated - continued

<i>Date</i>	<i>Time</i>	<i>Outdoor Temperature</i>	<i>Access Point</i>	<i>Viewing Dogs</i>	<i>Swimming dogs</i>	<i>Viewing</i>	<i>Wading/ Swimming</i>	<i>Tubes/ Rafts</i>	<i>Paddle-boards</i>	<i>Kayaks/ Canoes</i>	<i>Surfers</i>	<i>Other</i>
8/2/2019	3:15-4:15	85	2.1	0	4	6	6	13	2	0	0	0
8/2/2019	3:15-4:15	85	2.2	0	0	0	1	12	0	2	0	0
8/2/2019	3:15-4:15	85	2.3	0	0	0	45	29	0	0	0	2 boogie boards
8/2/2019	3:15-4:15	85	2.4	0	0	2	8	1	0	0	5	0
8/2/2019	3:15-4:15	85	2.5	0	0	0	22	25	0	1	18	0
8/2/2019	3:15-4:15	85	2.6	0	0	0	4	1	0	0	0	0

<i>Date</i>	<i>Time</i>	<i>Outdoor Temperature</i>	<i>Access Point</i>	<i>Viewing Dogs</i>	<i>Swimming dogs</i>	<i>Viewing</i>	<i>Wading/ Swimming</i>	<i>Tubes/ Rafts</i>	<i>Paddle-boards</i>	<i>Kayaks/ Canoes</i>	<i>Surfers</i>	<i>Other</i>
8/7/2019	5:45-6:45	94	2.7	0	7	10	12	0	0	0	0	2 boogie boards
8/7/2019	5:45-6:45	94	2.8	0	12	7	9	2	0	0	0	2 boogie boards
8/7/2019	5:45-6:45	94	2.9	0	6	8	5	11	0	0	0	4 boogie boards
8/7/2019	5:45-6:45	94	2.10	0	8	12	28	48	0	0	0	6 boogie boards



# McKay Park

## Access Zone 2 - Designated - continued



<i>Date</i>	<i>Time</i>	<i>Outdoor Temperature</i>	<i>Access Point</i>	<i>Viewing Dogs</i>	<i>Swimming dogs</i>	<i>Viewing</i>	<i>Wading/ Swimming</i>	<i>Tubes/ Rafts</i>	<i>Paddle-boards</i>	<i>Anglers</i>	<i>Kayaks/ Canoes</i>	<i>Other</i>
7/20/2019	5:45-6:45	82	Under bridge	0	0	0	0	338	0	0	0	1 swimmer, 2 popped tubes, 1 dog
7/21/2019	4:30-5:30	86	Under bridge	0	0	0	0	762	0	0	0	0

# Miller's Landing Park

## Summary



- ◆ Total access points: 2
  - Designated points: 2
  - User-created points: 0
- ◆ Top three activities
  - Viewing
  - Swimming dogs
  - Viewing Dogs
- ◆ Busiest day overall
  - Wednesday, 7/3/2019
  - 4:00 pm – 5:00 pm
  - Sunny
  - 70 degrees Fahrenheit
- ◆ Most used access point: 1
- ◆ Least used access point: 2

# Miller's Landing Park

## Access Point 1 - Designated



<i>Date</i>	<i>Time</i>	<i>Outdoor Temperature</i>	<i>Access Point</i>	<i>Viewing Dogs</i>	<i>Swimming dogs</i>	<i>Viewing</i>	<i>Wading/ Swimming</i>	<i>Tubes/ Rafts</i>	<i>Paddle-boards</i>	<i>Anglers</i>	<i>Kayaks/ Canoes</i>	<i>Other</i>
7/3/2019	4:00-5:00	70	1	8	0	34	0	0	2	0	2	16 bikes, 8 people
7/7/2019	10:15 - 11:15	58	1	2	0	25	0	0	0	0	0	5 bikes, 3 people, JW
7/18/2019	5:45-6:45	75	1	4	0	24	0	0	0	0	0	0
7/19/2019	9:00-10:00	52	1	8	0	27	0	0	0	0	0	0
8/1/2019	2:00-3:00	86	1	0	2	15	8	7	0	0	0	2 scooters, 1 person
8/10/2019	12:45 -1:45	69	1	4	0	34	6	0	0	0	1	6 bikes, 3 people



# Miller's Landing Park

## Access Point 2 - Designated



<i>Date</i>	<i>Time</i>	<i>Outdoor Temperature</i>	<i>Access Point</i>	<i>Viewing Dogs</i>	<i>Swimming dogs</i>	<i>Viewing</i>	<i>Wading/ Swimming</i>	<i>Tubes/ Rafts</i>	<i>Paddle-boards</i>	<i>Anglers</i>	<i>Kayaks/ Canoes</i>	<i>Other</i>
7/3/2019	4:00-5:00	70	2	2	28	12	2	0	1	0	0	0
7/7/2019	10:15 - 11:15	58	2	4	10	11	0	0	0	0	0	0
7/18/2019	5:45-6:45	75	2	0	34	10	2	0	2	0	0	8 bikes, 4 people, 2 strollers
7/19/2019	9:00-10:00	52	2	2	0	4	0	0	1	2	0	0
8/1/2019	2:00-3:00	86	2	0	12	14	14	4	0	0	0	0
8/10/2019	12:45 -1:45	69	2	0	4	16	1	0	0	0	0	Homeless in spot from 12:55 pm-1:30 pm



# Pacific Park

## Summary



- ◆ Total access points: 1
  - Designated points: 0
  - User-created points: 1
- ◆ Top three activities
  - Viewing
  - Bikes
  - Viewing Dogs
- ◆ Busiest day overall
  - Friday, 7/5/2019
  - 12:45 pm – 1:45 pm
  - Sunny
  - 81 degrees Fahrenheit
- ◆ Most used access point: 1
- ◆ Least used access point: N/A

# Pacific Park

## Access Zone 1 - User created



<i>Date</i>	<i>Time</i>	<i>Outdoor Temperature</i>	<i>Access Point</i>	<i>Viewing Dogs</i>	<i>Swimming dogs</i>	<i>Viewing</i>	<i>Wading/ Swimming</i>	<i>Tubes/ Rafts</i>	<i>Paddle-boards</i>	<i>Anglers</i>	<i>Kayaks/ Canoes</i>	<i>Other</i>
7/5/2019	12:45 -1:45	81	Zone 1	4	0	24	2	0	0	0	0	6 bikes, 3 people, 2 strollers
7/14/2019	9:00-10:00	63	Zone 1	0	0	14	0	0	0	4	0	2 bikes, 1 person
7/25/2019	11:30 - 12:30	75	Zone 1	0	0	2	0	0	0	0	0	4 bikes, 2 people
8/10/2019	11:30 - 12:30	62	Zone 1	4	0	14	0	0	0	0	0	4 bikes, 2 people

# Pageant Park

## Summary



- ◆ Total access points: 1
  - Designated points: 1
  - User-created points: 0
- ◆ Top three activities
  - Viewing
  - Tubes/rafts
  - Kayaks/canoes
- ◆ Busiest day overall
  - Friday, 7/5/2019
  - 4:30 pm – 5:30 pm
  - Sunny
  - 84 degrees Fahrenheit
- ◆ Most used access point: 1
- ◆ Least used access point: N/A



# Pageant Park

## Access Point 1 - Designated



<i>Date</i>	<i>Time</i>	<i>Outdoor Temperature</i>	<i>Access Point</i>	<i>Viewing Dogs</i>	<i>Swimming dogs</i>	<i>Viewing</i>	<i>Wading/ Swimming</i>	<i>Tubes/ Rafts</i>	<i>Paddle-boards</i>	<i>Anglers</i>	<i>Kayaks/ Canoes</i>	<i>Other</i>
7/5/2019	4:30-5:30	84	1	0	6	21	4	10	14	0	7	0
7/11/2019	2:00-3:00	80	1	2	0	8	0	0	0	0	0	0
7/26/2019	3:15-4:15	90	1	0	0	8	0	24	0	0	4	0
8/1/2019	10:15 - 11:15	72	1	0	0	8	4	0	0	0	0	Landscaping till 10:30, water on till 10:45
8/18/2019	11:30 - 12:30	80	1	0	0	22	0	0	0	0	10	0



# Pioneer Park

## Summary



- ◆ Total access points: 3
  - Designated points: 0
  - User-created points: 3
- ◆ Top three activities
  - Viewing
  - Swimming dogs
  - Viewing Dogs
- ◆ Busiest day overall
  - Friday, 7/5/2019
  - 2:00 pm – 3:00 pm
  - Sunny
  - 82 degrees Fahrenheit
- ◆ Most used access point: 3
- ◆ Least used access point: 2

# Pioneer Park

## Access Point 1 - User created



<i>Date</i>	<i>Time</i>	<i>Outdoor Temperature</i>	<i>Access Point</i>	<i>Viewing Dogs</i>	<i>Swimming dogs</i>	<i>Viewing</i>	<i>Wading/ Swimming</i>	<i>Tubes/ Rafts</i>	<i>Paddle-boards</i>	<i>Anglers</i>	<i>Kayaks/ Canoes</i>	<i>Other</i>
7/5/2019	2:00-3:00	82	1	0	0	15	13	0	8	1	0	0
7/14/2019	10:15 - 11:15	66	1	4	0	8	0	0	0	2	0	White water safety & rescue class in park
7/25/2019	2:00-3:00	83	1	0	0	4	0	0	0	2	0	0
8/8/2019	2:00-3:00	88	1	0	2	8	0	0	0	0	0	0

# Pioneer Park

## Access Point 2 - User created



<i>Date</i>	<i>Time</i>	<i>Outdoor Temperature</i>	<i>Access Point</i>	<i>Viewing Dogs</i>	<i>Swimming dogs</i>	<i>Viewing</i>	<i>Wading/ Swimming</i>	<i>Tubes/ Rafts</i>	<i>Paddle-boards</i>	<i>Anglers</i>	<i>Kayaks/ Canoes</i>	<i>Other</i>
7/5/2019	2:00-3:00	82	2	0	2	7	0	0	0	0	0	0
7/25/2019	12:45-1:45	81	2	0	3	6	0	0	0	0	0	0
8/8/2019	3:15-4:15	87	2	0	2	2	0	0	0	0	0	0
8/16/2019	12:45-1:45	77	2	4	0	18	0	0	0	0	0	0



# Pioneer Park

## Access Point 3 - User created



<i>Date</i>	<i>Time</i>	<i>Outdoor Temperature</i>	<i>Access Point</i>	<i>Viewing Dogs</i>	<i>Swimming dogs</i>	<i>Viewing</i>	<i>Wading/ Swimming</i>	<i>Tubes/ Rafts</i>	<i>Paddle-boards</i>	<i>Anglers</i>	<i>Kayaks/ Canoes</i>	<i>Other</i>
7/5/2019	2:00-3:00	82	3	0	0	11	0	0	0	0	0	0
7/25/2019	12:45-1:45	81	3	2	3	12	0	0	0	0	0	0
8/8/2019	3:15-4:15	87	3	4	0	6	0	0	0	0	0	0
8/16/2019	12:45-1:45	77	3	4	8	20	0	0	0	0	0	0



# Riley Ranch Nature Reserve

## Summary



- ♦ Total access points: 8
  - Designated points: 3
  - User-created points: 5
- ♦ Top three activities
  - Viewing
  - Tubes/rafts
  - Viewing Dogs
- ♦ Busiest day overall
  - Saturday, 7/20/2019
  - 3:15 pm – 4:15 pm
  - Sunny
  - 80 degrees Fahrenheit
- ♦ Most used access point: 2
- ♦ Least used access point: 1, 3, 5

# Riley Ranch Nature Reserve

## Access Points 1 and 2 - Designated



<i>Date</i>	<i>Time</i>	<i>Outdoor Temperature</i>	<i>Access Point</i>	<i>Viewing Dogs</i>	<i>Swimming dogs</i>	<i>Viewing</i>	<i>Wading/ Swimming</i>	<i>Tubes/ Rafts</i>	<i>Paddle-boards</i>	<i>Anglers</i>	<i>Kayaks/ Canoes</i>	<i>Other</i>
7/20/2019	11:30 - 12:30	70	1	0	0	0	0	0	0	0	0	0
7/20/2019	12:45 - 1:45	73	2	0	0	10	0	0	0	0	0	4 people viewing at edge
7/20/2019	2:00-3:00	74	2	0	0	8	0	2	0	0	0	0
8/4/2019	2:00-3:00	85	2	0	0	8	0	0	0	0	0	0

# Riley Ranch Nature Reserve

## Access Point 3 and 4 - User created



<i>Date</i>	<i>Time</i>	<i>Outdoor Temperature</i>	<i>Access Point</i>	<i>Viewing Dogs</i>	<i>Swimming dogs</i>	<i>Viewing</i>	<i>Wading/ Swimming</i>	<i>Tubes/ Rafts</i>	<i>Paddle-boards</i>	<i>Anglers</i>	<i>Kayaks/ Canoes</i>	<i>Other</i>
7/20/2019	2:00-3:00	74	3	0	0	0	0	0	0	0	0	0
8/4/2019	2:00-3:00	85	3	0	0	0	0	0	0	0	0	0
7/20/2019	2:00-3:00	74	4	0	0	4	0	0	0	0	0	0
8/4/2019	2:00-3:00	85	4	0	0	0	0	0	0	0	0	0



# Riley Ranch Nature Reserve

## Access Point 5 and 6 - User created and Designated



<i>Date</i>	<i>Time</i>	<i>Outdoor Temperature</i>	<i>Access Point</i>	<i>Viewing Dogs</i>	<i>Swimming dogs</i>	<i>Viewing</i>	<i>Wading/ Swimming</i>	<i>Tubes/ Rafts</i>	<i>Paddle-boards</i>	<i>Anglers</i>	<i>Kayaks/ Canoes</i>	<i>Other</i>
8/4/2019	2:00-3:00	83	5	0	0	0	0	0	0	0	0	0
8/4/2019	10:15 - 11:15	76	6	0	0	8	0	0	0	0	0	0



# Riley Ranch Nature Reserve

## Access Point 7 and 8 - User created and Designated

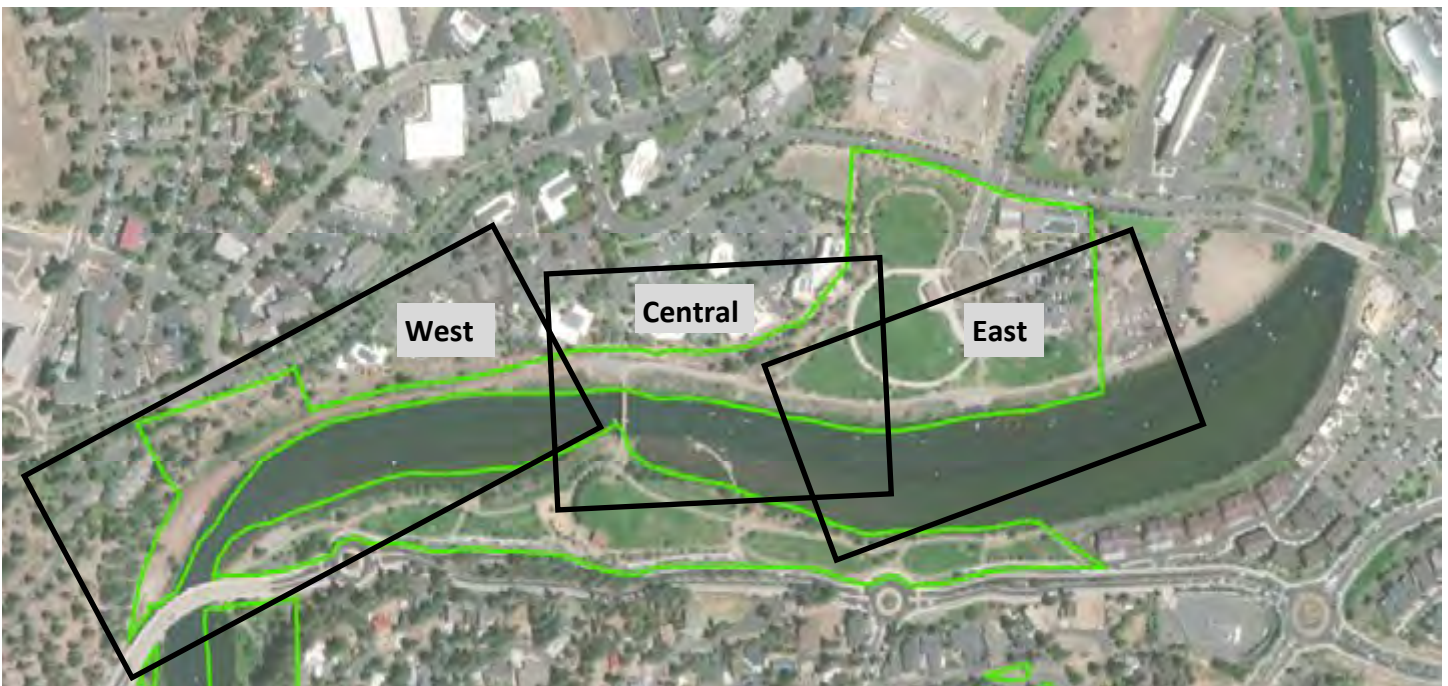


<i>Date</i>	<i>Time</i>	<i>Outdoor Temperature</i>	<i>Access Point</i>	<i>Viewing Dogs</i>	<i>Swimming dogs</i>	<i>Viewing</i>	<i>Wading/ Swimming</i>	<i>Tubes/ Rafts</i>	<i>Paddle-boards</i>	<i>Anglers</i>	<i>Kayaks/ Canoes</i>	<i>Other</i>
7/20/2019	3:15-4:15	80	7	2	0	12	0	0	0	0	0	2 people + dog coming from Tumalo State Park
8/4/2019	11:30 - 12:30	80	8	0	0	2	0	0	0	0	0	0

# Riverbend Park

## Summary

Riverbend Park was divided into three sections for display. The sections are: west, central and east.





# Riverbend Park

## Summary



Riverbend Park - West



Riverbend Park - Central



# Riverbend Park

## Summary continued



- ◆ Total access points: 9
  - Designated points: 1
  - User-created points: 8
- ◆ Top three activities
  - Viewing
  - Swimming dogs
  - Tubes/rafts
- ◆ Busiest day overall
  - Friday, 7/5/2019
  - 5:45 pm – 6:45 pm
  - Sunny
  - 82 degrees Fahrenheit
- ◆ Most used access point: 1
- ◆ Least used access point: 6

# Riverbend Park

## Access Point 1 - Designated



<i>Date</i>	<i>Time</i>	<i>Outdoor Temperature</i>	<i>Access Point</i>	<i>Viewing Dogs</i>	<i>Swimming dogs</i>	<i>Viewing</i>	<i>Wading/ Swimming</i>	<i>Tubes/ Rafts</i>	<i>Paddle-boards</i>	<i>Anglers</i>	<i>Kayaks/ Canoes</i>	<i>Other</i>
6/28/2019	12:00-1:00	62	1	4	11	51	0	15	7	0	25	17 Tumalo Creek worker crossings
7/5/2019	5:45-6:45	82	1	1	43	69	81	90	44	0	15	0
7/26/2019	10:15 - 11:15	73	1	4	31	52	15	64	25	0	9	19 Tumalo Creek worker crossings
8/1/2019	4:30-5:30	88	1	0	50	67	129	29	29	0	11	20 Tumalo Creek worker crossings
8/15/2019	4:30-5:30	83	1	1	10	15	66	114	11	0	11	6 Tumalo Creek worker crossings
8/16/2019	9:00-10:00	58	1	0	14	18	18	0	9	0	7	4 Tumalo Creek worker crossings

# Riverbend Park

## Access Point 2 - User created



<i>Date</i>	<i>Time</i>	<i>Outdoor Temperature</i>	<i>Access Point</i>	<i>Viewing Dogs</i>	<i>Swimming dogs</i>	<i>Viewing</i>	<i>Wading/ Swimming</i>	<i>Tubes/ Rafts</i>	<i>Paddle-boards</i>	<i>Anglers</i>	<i>Kayaks/ Canoes</i>	<i>Other</i>
6/28/2019	1:10-2:10	64	2	0	0	0	0	0	0	0	0	0
7/4/2019	4:45-5:45	79	2	0	0	0	3	0	0	0	0	0
7/6/2019	11:30 - 12:30	73	2	0	0	0	0	0	0	0	0	0
7/7/2019	3:15-4:15	72	2	0	0	2	0	2	0	0	2	0
7/26/2019	12:45-1:45	86	2	0	0	0	0	0	0	0	0	0



# Riverbend Park

## Access Point 3 - User created



<i>Date</i>	<i>Time</i>	<i>Outdoor Temperature</i>	<i>Access Point</i>	<i>Viewing Dogs</i>	<i>Swimming dogs</i>	<i>Viewing</i>	<i>Wading/ Swimming</i>	<i>Tubes/ Rafts</i>	<i>Paddle-boards</i>	<i>Anglers</i>	<i>Kayaks/ Canoes</i>	<i>Other</i>
6/28/2019	1:10-2:10	64	3	2	0	2	0	0	0	0	0	0
7/4/2019	4:45-5:45	79	3	0	24	6	0	3	0	0	0	0
7/6/2019	11:30 - 12:30	73	3	0	22	3	0	0	0	0	0	0
7/7/2019	3:15-4:15	72	3	0	0	0	4	0	0	0	0	2 people playing load music whole time
7/26/2019	12:45 -1:45	86	3	0	22	0	8	9	0	0	0	People here from 1-1:30

# Riverbend Park

## Access Point 4 - User created



<i>Date</i>	<i>Time</i>	<i>Outdoor Temperature</i>	<i>Access Point</i>	<i>Viewing Dogs</i>	<i>Swimming dogs</i>	<i>Viewing</i>	<i>Wading/ Swimming</i>	<i>Tubes/ Rafts</i>	<i>Paddle-boards</i>	<i>Anglers</i>	<i>Kayaks/ Canoes</i>	<i>Other</i>
6/28/2019	1:10-2:10	64	4	2	4	2	0	0	0	0	0	0
7/4/2019	4:45-5:45	79	4	0	18	2	4	8	1	0	0	0
7/6/2019	11:30 - 12:30	73	4	2	34	12	0	0	6	2	6	0
7/7/2019	3:15-4:15	72	4	0	22	9	6	11	1	0	0	0
7/26/2019	12:45-1:45	86	4	0	4	5	4	12	0	0	0	0

# Riverbend Park

## Access Point 5 - User created



<i>Date</i>	<i>Time</i>	<i>Outdoor Temperature</i>	<i>Access Point</i>	<i>Viewing Dogs</i>	<i>Swimming dogs</i>	<i>Viewing</i>	<i>Wading/ Swimming</i>	<i>Tubes/ Rafts</i>	<i>Paddle-boards</i>	<i>Anglers</i>	<i>Kayaks/ Canoes</i>	<i>Other</i>
7/3/2019	2:30-3:30	68	5	0	6	0	0	0	0	0	0	0
7/6/2019	10:15 - 11:15	67	5	0	8	8	2	0	0	0	0	0
7/7/2019	4:30-5:30	73	5	0	0	0	0	0	0	0	0	0
7/26/2019	11:30 - 12:30	82	5	0	5	2	0	0	0	0	0	0
8/17/2019	9:00-10:00	59	5	2	2	10	0	0	0	0	0	0



# Riverbend Park

## Access Point 6 - User created



<i>Date</i>	<i>Time</i>	<i>Outdoor Temperature</i>	<i>Access Point</i>	<i>Viewing Dogs</i>	<i>Swimming dogs</i>	<i>Viewing</i>	<i>Wading/ Swimming</i>	<i>Tubes/ Rafts</i>	<i>Paddle-boards</i>	<i>Anglers</i>	<i>Kayaks/ Canoes</i>	<i>Other</i>
7/3/2019	2:30-3:30	68	6	0	0	0	0	0	0	0	0	0
7/6/2019	10:15 - 11:15	67	6	0	2	2	0	0	0	0	0	0
7/7/2019	4:30-5:30	73	6	0	0	0	0	0	0	0	0	0
7/26/2019	11:30 - 12:30	82	6	0	0	0	0	0	0	0	0	0
8/17/2019	9:00-10:00	59	6	0	0	0	0	0	0	0	0	0

# Riverbend Park

## Access Point 7 - User created



<i>Date</i>	<i>Time</i>	<i>Outdoor Temperature</i>	<i>Access Point</i>	<i>Viewing Dogs</i>	<i>Swimming dogs</i>	<i>Viewing</i>	<i>Wading/ Swimming</i>	<i>Tubes/ Rafts</i>	<i>Paddle-boards</i>	<i>Anglers</i>	<i>Kayaks/ Canoes</i>	<i>Other</i>
7/3/2019	2:30-3:30	68	7	0	0	0	0	0	0	0	0	0
7/6/2019	10:15 - 11:15	67	7	0	2	0	0	0	0	0	0	0
7/7/2019	4:30-5:30	73	7	2	0	2	0	0	0	0	0	0
7/26/2019	11:30 - 12:30	82	7	0	1	0	0	0	0	0	0	0
8/17/2019	9:00-10:00	59	7	0	0	0	0	0	0	0	0	0

# Riverbend Park

## Access Point 8 - User created



<i>Date</i>	<i>Time</i>	<i>Outdoor Temperature</i>	<i>Access Point</i>	<i>Viewing Dogs</i>	<i>Swimming dogs</i>	<i>Viewing</i>	<i>Wading/ Swimming</i>	<i>Tubes/ Rafts</i>	<i>Paddle-boards</i>	<i>Anglers</i>	<i>Kayaks/ Canoes</i>	<i>Other</i>
7/3/2019	2:30-3:30	68	8	2	4	0	0	0	2	0	0	0
7/6/2019	10:15 - 11:15	67	8	0	4	4	0	0	0	0	0	0
7/7/2019	4:30-5:30	73	8	0	2	2	0	0	0	0	0	0
7/26/2019	11:30 - 12:30	82	8	0	0	0	1	0	0	0	0	0
8/2/2019	10:15 - 11:15	70	8	0	0	2	6	0	0	0	0	0
8/17/2019	9:00-10:00	59	8	0	2	2	0	0	0	0	0	0



# Riverbend Park

## Access Point 9 - User created



<i>Date</i>	<i>Time</i>	<i>Outdoor Temperature</i>	<i>Access Point</i>	<i>Viewing Dogs</i>	<i>Swimming dogs</i>	<i>Viewing</i>	<i>Wading/ Swimming</i>	<i>Tubes/ Rafts</i>	<i>Paddle-boards</i>	<i>Anglers</i>	<i>Kayaks/ Canoes</i>	<i>Other</i>
7/3/2019	2:30-3:30	68	9	6	40	26	0	10	0	0	0	5 jumps
7/6/2019	10:15 - 11:15	67	9	2	36	34	4	0	0	0	0	6 bikes, 3 people
7/7/2019	4:30-5:30	73	9	2	4	22	0	0	0	0	0	2 bikes, 1 person
7/26/2019	11:30 - 12:30	82	9	4	6	12	1	0	0	0	0	2 jumps
8/17/2019	9:00-10:00	59	9	4	2	14	6	0	0	0	0	0

# River Rim Park

## Summary



- ◆ Total access points: 7
  - Designated points: 1
  - User-created points: 6
- ◆ Top three activities
  - Viewing
  - Wading/swimming
  - Swimming dogs
- ◆ Busiest day overall
  - Sunday, 8/18/2019
  - 5:45 pm – 6:45 pm
  - Windy/Sunny
  - 85 degrees Fahrenheit
- ◆ Most used access point: 2
- ◆ Least used access point: Zone 1

# River Rim Park

## Access Point Zone 1 - User created



<i>Date</i>	<i>Time</i>	<i>Outdoor Temperature</i>	<i>Access Point</i>	<i>Viewing Dogs</i>	<i>Swimming dogs</i>	<i>Viewing</i>	<i>Wading/ Swimming</i>	<i>Tubes/ Rafts</i>	<i>Paddle-boards</i>	<i>Anglers</i>	<i>Kayaks/ Canoes</i>	<i>Other</i>
7/19/2019	11:30 - 12:30	62	Zone 1	0	0	0	0	0	0	0	0	0
8/8/2019	11:30 - 12:30	82	Zone 1	0	0	0	0	0	0	0	0	0
8/2/2019	12:30 - 1:45	80	Zone 1	0	0	0	0	0	0	2	0	0
8/16/2019	4:30- 5:30	83	Zone 1	0	0	0	0	0	0	0	0	0
8/18/2019	5:45- 6:45	85	Zone 1	0	6	8	0	0	0	1	0	0



# River Rim Park

## Access Point 2 - Designated



Date	Time	Outdoor Temperature	Access Point	Viewing Dogs	Swimming dogs	Viewing	Wading/ Swimming	Tubes/ Rafts	Paddle-boards	Anglers	Kayaks/ Canoes	Other
7/19/ 2019	11:30 - 12:30	62	2	0	2	0	0	0	0	0	0	3 viewing from hill top. 4 kayakers entering at 12:30
8/2/ 2019	12:30 -1:45	80	2	0	0	0	0	0	0	0	0	0
8/8/ 2019	11:30 - 12:30	82	2	0	0	0	0	0	0	0	0	1 viewing from hill top
8/16/ 2019	4:30- 5:30	83	2	0	0	0	0	0	0	0	0	0
8/18/ 2019	5:45- 6:45	85	2	9	4	17	0	0	0	0	0	0

# River Rim Park

## Access Point Zone 3 - User created



<i>Date</i>	<i>Time</i>	<i>Outdoor Temperature</i>	<i>Access Point</i>	<i>Viewing Dogs</i>	<i>Swimming dogs</i>	<i>Viewing</i>	<i>Wading/ Swimming</i>	<i>Tubes/ Rafts</i>	<i>Paddle-boards</i>	<i>Anglers</i>	<i>Kayaks/ Canoes</i>	<i>Other</i>
7/19/2019	11:30 - 12:30	62	Zone 3	0	12	0	0	0	0	0	0	0
8/8/2019	11:30 - 12:30	82	Zone 3	0	0	0	0	0	0	0	0	0
8/2/2019	12:30 - 1:45	80	Zone 3	0	0	0	0	0	0	0	0	0
8/16/2019	4:30- 5:30	83	Zone 3	0	0	0	0	0	0	0	0	0
8/18/2019	5:45- 6:45	85	Zone 3	2	3	10	0	0	0	0	0	0



# Riverside Natural Area

## Summary



- ◆ Total access points: 1
  - Designated points: 1
  - User-created points: 0
- ◆ Top three activities
  - No use observed
- ◆ Busiest day overall
  - No use observed
- ◆ Most used access point: No use
- ◆ Least used access point: No use



# Riverside Natural Area

## Access Point 1 - Designated



<i>Date</i>	<i>Time</i>	<i>Outdoor Temperature</i>	<i>Access Point</i>	<i>Viewing Dogs</i>	<i>Swimming dogs</i>	<i>Viewing</i>	<i>Wading/ Swimming</i>	<i>Tubes/ Rafts</i>	<i>Paddle-boards</i>	<i>Anglers</i>	<i>Kayaks/ Canoes</i>	<i>Other</i>
7/5/2019	2:00-3:00	82	1	0	0	0	0	0	0	0	0	0
7/14/2019	10:15 - 11:15	66	1	0	0	0	0	0	0	0	0	0
8/18/2019	12:45 - 1:45	83	1	0	0	0	0	0	0	0	0	0

# Riverview Park

## Summary

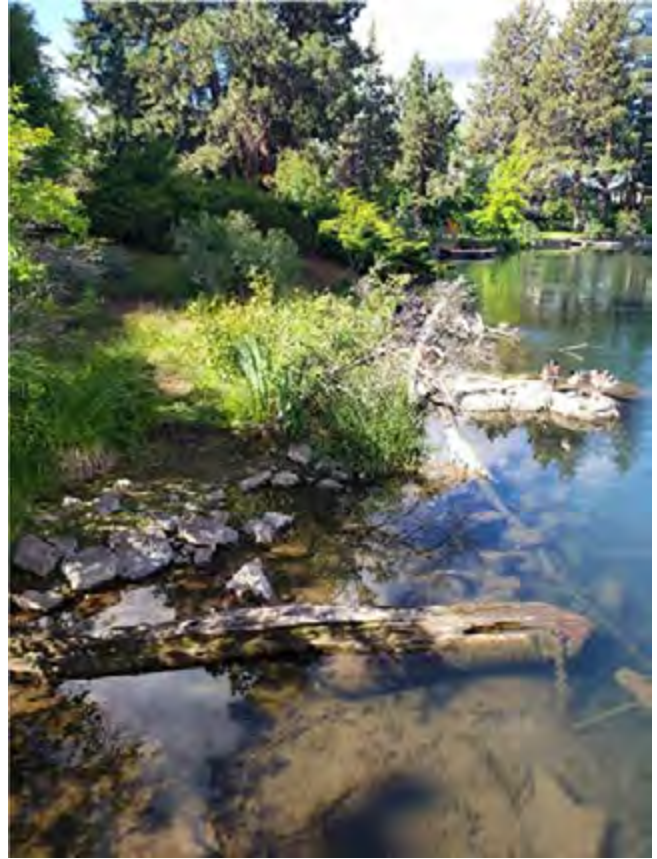


- ◆ Total access points: 2
  - Designated points: 1
  - User-created points: 1
- ◆ Top three activities
  - Viewing
  - Kayaks/canoes
  - Anglers
- ◆ Busiest day overall
  - Sunday, 8/11/2019
  - 9:00 am – 10:00 am
  - Windy/Sunny
  - 56 degrees Fahrenheit
- ◆ Most used access point: 2
- ◆ Least used access point: 1



# Riverview Park

## Access Point 1 - User created



<i>Date</i>	<i>Time</i>	<i>Outdoor Temperature</i>	<i>Access Point</i>	<i>Viewing Dogs</i>	<i>Swimming dogs</i>	<i>Viewing</i>	<i>Wading/ Swimming</i>	<i>Tubes/ Rafts</i>	<i>Paddle-boards</i>	<i>Anglers</i>	<i>Kayaks/ Canoes</i>	<i>Other</i>
7/18/2019	2:00-3:00	78	1	0	0	0	0	0	0	0	0	BPRD landscaping till 2:30
8/11/2019	9:00-10:00	56	1	0	0	0	0	0	0	0	4	0
8/18/2019	10:15 - 11:15	69	1	0	0	0	0	0	1	0	1	0



# Riverview Park

## Access Point 2 - Designated



<i>Date</i>	<i>Time</i>	<i>Outdoor Temperature</i>	<i>Access Point</i>	<i>Viewing Dogs</i>	<i>Swimming dogs</i>	<i>Viewing</i>	<i>Wading/ Swimming</i>	<i>Tubes/ Rafts</i>	<i>Paddle-boards</i>	<i>Anglers</i>	<i>Kayaks/ Canoes</i>	<i>Other</i>
7/18/2019	2:00-3:00	78	2	0	0	2	0	0	0	2	0	Man sleeping on ground till 2:10
8/11/2019	9:00-10:00	56	2	0	0	4	0	0	0	0	0	0
8/18/2019	10:15 - 11:15	69	2	0	0	0	0	0	0	0	0	9 BPRD worker crossings

# Sawyer Park

## Summary

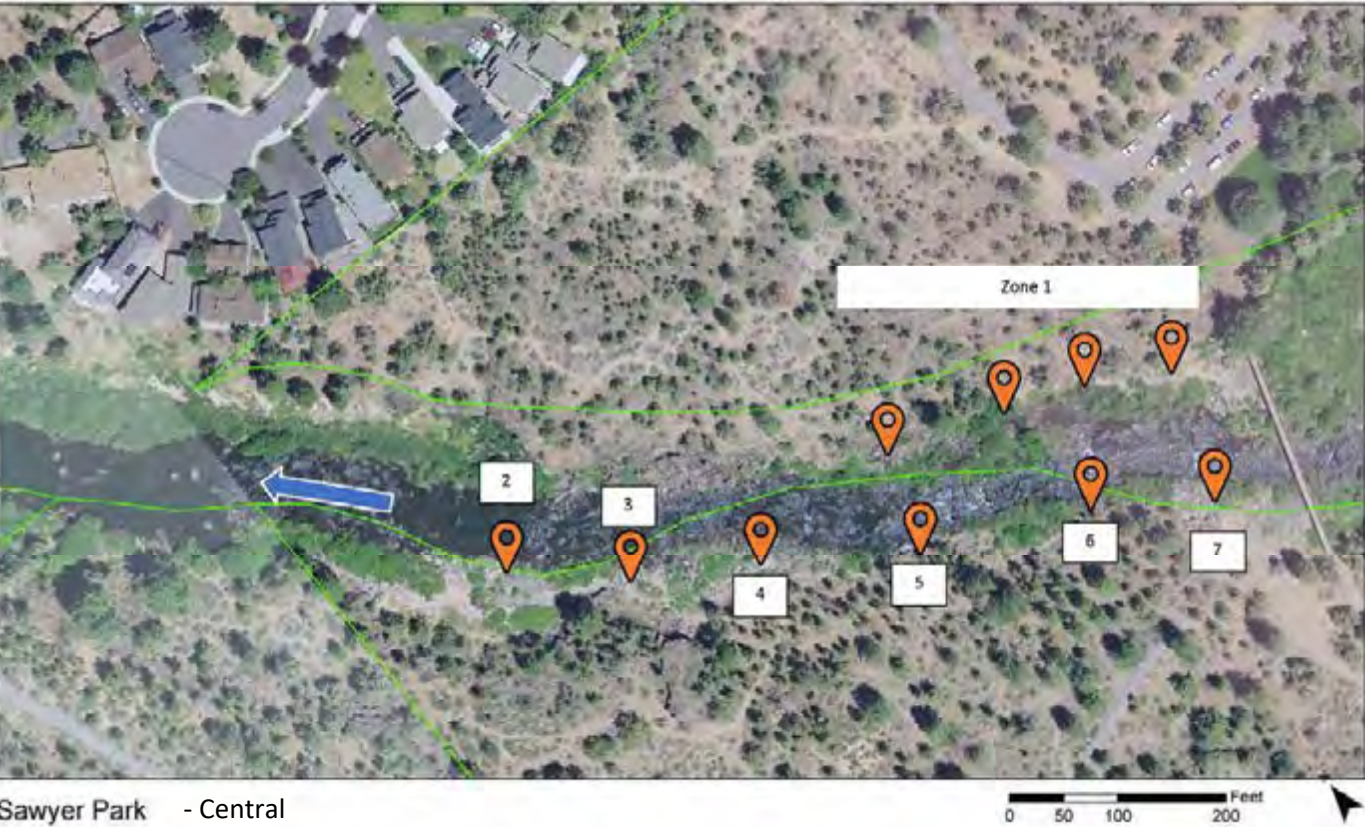
Sawyer Park was divided into three sections for display. The sections are: south, central and north.





# Sawyer Park

## Summary





# Sawyer Park

## Summary continued



- ◆ Total access points: 12
  - Designated points: 1
  - User-created points: 11
- ◆ Top three activities
  - Viewing
  - Wading/swimming
  - Swimming dogs
- ◆ Busiest day overall
  - Sunday, 7/28/2019
  - 2:00 pm – 3:00 pm
  - Sunny
  - 82 degrees Fahrenheit
- ◆ Most used access point: RL Zone 2
- ◆ Least used access point: RL Zone 1

# Sawyer Park

## Access Point RL Zone 1 - User created



<i>Date</i>	<i>Time</i>	<i>Outdoor Temperature</i>	<i>Access Point</i>	<i>Viewing Dogs</i>	<i>Swimming dogs</i>	<i>Viewing</i>	<i>Wading/ Swimming</i>	<i>Tubes/ Rafts</i>	<i>Paddle-boards</i>	<i>Anglers</i>	<i>Kayaks/ Canoes</i>	<i>Other</i>
8/11/2019	11:30 - 12:30	66	RL Zone 1	0	0	0	0	0	0	2	0	0
8/17/2019	10:15 - 11:15	63	RL Zone 1	0	0	4	0	0	0	0	0	0



# Sawyer Park

## Access Point RL 2 - User created



<i>Date</i>	<i>Time</i>	<i>Outdoor Temperature</i>	<i>Access Point</i>	<i>Viewing Dogs</i>	<i>Swimming dogs</i>	<i>Viewing</i>	<i>Wading/ Swimming</i>	<i>Tubes/ Rafts</i>	<i>Paddle-boards</i>	<i>Anglers</i>	<i>Kayaks/ Canoes</i>	<i>Other</i>
7/18/2019	10:15 - 11:15	69	RL 2	0	0	2	0	0	0	0	0	0
7/27/2019	9:00-10:00	67	RL 2	2	4	5	2	0	0	0	0	0
7/28/2019	2:00-3:00	82	RL 2	2	9	0	23	0	0	0	0	0
8/11/2019	11:30 - 12:30	66	RL 2	5	0	4	2	0	0	0	0	0
8/17/2019	10:15 - 11:15	63	RL 2	0	0	4	0	0	0	2	0	0



# Sawyer Park

## Access Point RL 3 - User created



<i>Date</i>	<i>Time</i>	<i>Outdoor Temperature</i>	<i>Access Point</i>	<i>Viewing Dogs</i>	<i>Swimming dogs</i>	<i>Viewing</i>	<i>Wading/ Swimming</i>	<i>Tubes/ Rafts</i>	<i>Paddle-boards</i>	<i>Anglers</i>	<i>Kayaks/ Canoes</i>	<i>Other</i>
7/18/2019	10:15 - 11:15	69	RL 3	0	0	2	0	0	0	0	0	0
7/27/2019	9:00-10:00	67	RL 3	2	10	11	4	0	0	0	0	0
7/28/2019	2:00-3:00	82	RL 3	2	8	0	13	0	0	0	0	0
8/11/2019	11:30 - 12:30	66	RL 3	0	0	4	0	0	0	0	0	0
8/17/2019	10:15 - 11:15	63	RL 3	2	6	15	0	0	0	2	0	0

# Sawyer Park

## Access Point RL 4 - User created



<i>Date</i>	<i>Time</i>	<i>Outdoor Temperature</i>	<i>Access Point</i>	<i>Viewing Dogs</i>	<i>Swimming dogs</i>	<i>Viewing</i>	<i>Wading/ Swimming</i>	<i>Tubes/ Rafts</i>	<i>Paddle-boards</i>	<i>Anglers</i>	<i>Kayaks/ Canoes</i>	<i>Other</i>
7/18/2019	10:15 - 11:15	69	RL 4	2	0	5	0	0	0	0	0	0
7/27/2019	9:00-10:00	67	RL 4	0	8	14	12	0	0	0	0	0
7/28/2019	2:00-3:00	82	RL 4	1	6	1	12	0	0	0	0	0
8/11/2019	11:30 - 12:30	66	RL 4	0	2	4	0	0	0	0	0	0
8/17/2019	10:15 - 11:15	63	RL 4	0	10	8	0	0	0	2	0	0

# Sawyer Park

## Access Point RL 5 - User created



<i>Date</i>	<i>Time</i>	<i>Outdoor Temperature</i>	<i>Access Point</i>	<i>Viewing Dogs</i>	<i>Swimming dogs</i>	<i>Viewing</i>	<i>Wading/ Swimming</i>	<i>Tubes/ Rafts</i>	<i>Paddle-boards</i>	<i>Anglers</i>	<i>Kayaks/ Canoes</i>	<i>Other</i>
7/18/2019	10:15 - 11:15	69	RL 5	0	6	8	0	0	0	0	0	0
7/27/2019	9:00-10:00	67	RL 5	0	3	6	0	0	0	0	0	0
7/28/2019	2:00-3:00	82	RL 5	0	6	6	14	0	0	0	0	0
8/11/2019	11:30 - 12:30	66	RL 5	0	0	6	6	0	0	0	0	JW by bridge
8/17/2019	10:15 - 11:15	63	RL 5	0	0	0	0	0	0	0	0	0



# Sawyer Park

## Access Point RL 6 - User created



<i>Date</i>	<i>Time</i>	<i>Outdoor Temperature</i>	<i>Access Point</i>	<i>Viewing Dogs</i>	<i>Swimming dogs</i>	<i>Viewing</i>	<i>Wading/ Swimming</i>	<i>Tubes/ Rafts</i>	<i>Paddle-boards</i>	<i>Anglers</i>	<i>Kayaks/ Canoes</i>	<i>Other</i>
7/18/2019	12:45 -1:45	76	RL 6	0	0	12	0	0	0	2	0	0
7/27/2019	10:15 - 11:15	70	RL 6	0	0	4	0	0	0	0	0	0
7/28/2019	3:15- 4:15	84	RL 6	0	2	0	2	0	0	0	0	0
8/11/2019	10:15 - 11:15	60	RL 6	3	2	22	0	0	0	0	0	0

# Sawyer Park

## Access Point RL 7 - User created



<i>Date</i>	<i>Time</i>	<i>Outdoor Temperature</i>	<i>Access Point</i>	<i>Viewing Dogs</i>	<i>Swimming dogs</i>	<i>Viewing</i>	<i>Wading/ Swimming</i>	<i>Tubes/ Rafts</i>	<i>Paddle-boards</i>	<i>Anglers</i>	<i>Kayaks/ Canoes</i>	<i>Other</i>
7/18/2019	11:30 - 12:30	72	RL 7	0	2	19	0	0	0	0	0	0
7/18/2019	12:45 -1:45	76	RL 7	0	2	6	4	0	0	2	0	0
7/27/2019	10:15 - 11:15	70	RL 7	2	0	4	0	0	0	0	0	0
7/28/2019	3:15- 4:15	84	RL 7	2	2	10	0	0	0	0	0	0
8/11/2019	10:15 - 11:15	60	RL 7	8	0	8	0	0	0	0	0	0



# Sawyer Park

## Access Point RL Zone 8 - Designated - “Angler’s Trail”



<i>Date</i>	<i>Time</i>	<i>Outdoor Temperature</i>	<i>Access Point</i>	<i>Viewing Dogs</i>	<i>Swimming dogs</i>	<i>Viewing</i>	<i>Wading/ Swimming</i>	<i>Tubes/ Rafts</i>	<i>Paddle-boards</i>	<i>Anglers</i>	<i>Kayaks/ Canoes</i>	<i>Other</i>
7/18/2019	11:30 - 12:30	72	RL Zone 8	2	0	4	0	0	0	3	0	0
7/18/2019	12:45 - 1:45	76	RL Zone 8	2	0	3	0	0	0	0	0	0
7/27/2019	10:15 - 11:15	70	RL Zone 8	6	0	35	0	0	0	1	0	1 bike
7/28/2019	3:15- 4:15	84	RL Zone 8	9	0	12	2	0	0	0	0	0
8/11/2019	10:15 - 11:15	60	RL Zone 8	11	0	32	0	0	0	0	0	2 strollers

\*Counted only as in and out, not individual spots in zone



# Sawyer Park

## Access Point RR Zone 1 - User created



Date	Time	Outdoor Temperature	Access Point	Viewing Dogs	Swimming dogs	Viewing	Wading/ Swimming	Tubes/ Rafts	Paddle-boards	Anglers	Kayaks/ Canoes	Other
7/18/ 2019	11:30 - 12:30	72	RR Zone 3	0	4	16	0	0	0	5	0	0
7/18/ 2019	12:45 -1:45	76	RR Zone 3	0	0	0	0	0	0	2	0	0
7/27/ 2019	10:15 - 11:15	70	RR Zone 3	0	0	6	0	0	0	0	0	0
7/28/ 2019	3:15- 4:15	84	RR Zone 3	0	0	2	0	0	0	0	0	0
8/11/ 2019	10:15 - 11:15	60	RR Zone 3	6	0	10	0	0	0	0	0	0

# Survey Overview and Results

## Summary

In addition to recording observational data, BPRD staff also surveyed river users to gain insights on river use. Surveys were given verbally at 13 parks to a total of 106 river users. Most respondents lived in Bend or Oregon, group size ranged from 1 to 23 people and the top recreation activities were floating, viewing and swimming. Complete survey results follow.

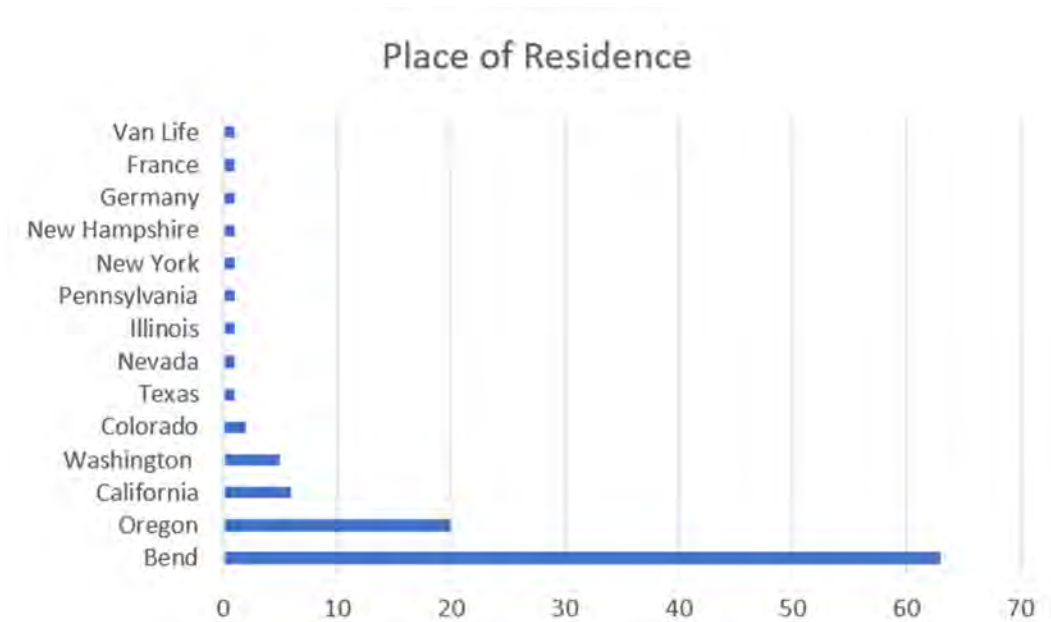


Figure 4: Residence of survey respondents

# Survey Overview and Results

## Summary

Riverbend Beach 2:00-3:00p.m. 7/6/2019 78 Degrees Sunny

<i>Recreation Activity</i>	<i>What do you like about recreating on the river?</i>	<i>What would make your recreating experience better on the river?</i>	<i>Where are you from?</i>	<i>Group Size</i>	<i>Other Comments</i>
Floating	Just being on the river	Another tube pump	Bend	2	
Floating	First time so not sure	Better communication about how to do everything	Bend	4	
Floating	Long float	Don't come 7/4 weekend	Bend	4	
Floating	Friends	More rapids	Portland	6	
Floating	Chill outside on river	Nothing	Redmond	8	
Floating	Get to float with cousins	More rapids	Eureka, CA	10	
Kayaking & PB	Ambiance, water, rapids	Better place to unload	Seattle	4	
Paddle Boarding	Starts far up the river	More parking	Bend	1	
Paddle Boarding	Get to be close to the water. Can control the board	More access and parking	Bend	1	No fees for river access please. Saw news story about it
Paddle Boarding	More of a challenge up stream	Alcohol legal	Portland	1	
Paddle Boarding	Can go up & down river	Sand	Bend	2	
Swimming	Relaxing	Sand not rocks	Bend	8	
Swimming	Convenience/Location	More rental options	Bend	9	
Viewing	Community and atmosphere	Less busy	Portland/Sisters	4	
Viewing	Coming weekdays when not busy	Less people from out of town	Bend	5	Was with grandkids that wanted to come
Viewing	Part of Bend. "It is what we do"	Less rocks	Bend	9	



# Survey Overview and Results

## Summary continued

Drake Beach

4:30-5:30p.m.

7/13/2019

80 Degrees

Partly Cloudy/Windy

<i>Recreation Activity</i>	<i>What do you like about recreating on the river?</i>	<i>What would make your recreating experience better on the river?</i>	<i>Where are you from?</i>	<i>What, if anything, would make the experience of accessing the river better here?</i>	<i>Where are you from?</i>	<i>Group Size</i>	<i>Other Comments</i>
Floating	easy pace	warmer water	easy to get out	signage	Bend	2	
Floating	water, relaxing	more shuttle times	easy	nothing	Eugene, OR	2	
Floating	being in the water	less touristy people	easy	nothing	Redmond	3	
Floating	relaxing	floating bar, less deep exit b4 rapids	clean, convenient	food/drinks at the end	Bend	4	
Floating	relaxing, can be lazy	less people	level & okay parking	nothing	Bend	4	1 dog
Floating	relaxing	if the population was 1995, food trucks	Cleaner beach exiting than past	bigger beach	Portland	4	
Floating	rapids	deeper rapids	we don't	less poo	Bend	5	
Floating	relaxing	Nothing	easy walk	nothing	Bend	6	
Floating	the water	less cold, less moss	its Bend, easy access to get picked up	bigger section to exit, less people	Bend	6	
Floating	sun, nice	Nothing	easy to get out	nothing	Diamond Bar, CA	6	
Floating	Sunshine, water	Smooth rocks	flat exit surface	Less poo	Bend	7	
Floating	relaxing	fewer sharp rocks exiting	it's okay	Safer area to exit for kids	Bend	8	
Floating	peaceful	more beer	grass	nothing	Dallas, TX	8	
Floating	relaxing/drinking	less people	convenient easy way to leave	nothing	Crooked River Ranch, OR	10	
Floating	beautiful	Nothing	convenient	sign on where exactly to get out	Reno, Nevada	12	
Floating	fun	more parking/tube blow up plugs	space/beach	less junk on the ground	Central, Ca	23	
Kayaking	collect children easily	less people	no opinion	more beach	Bend	7	
Paddle Boarding	can stay above the water, can sun-bathe	Nothing	easy	gravel exit, very mushy	Portland, OR	23	
Viewing	people watching, hanging out	weather, concession stand	iconic, beautiful	keep the pond but get rid of damn some how	Redmond	1	
Viewing	beautiful	Nothing	easy take out	nothing	Richfield, WA	20	Recycling Bin at the end

# Survey Overview and Results

## Summary continued

1<sup>st</sup> Street Rapids 3:15-4:15 p.m. 7/14/2019 82 Degrees Sunny

<i>Recreation Activity</i>	<i>What do you like about recreating on the river?</i>	<i>What would make your recreating experience better on the river?</i>	<i>Where are you from?</i>	<i>What, if anything, would make the experience of accessing the river better here?</i>	<i>Where are you from?</i>	<i>Group Size</i>	<i>Other Comments</i>
Swimming	everything	Nothing	use to be a hidden gem	less people	Bend	1	
Swimming	refreshing	more spots to jump in	close to water's edge, hear water	get rid of wire on bridge-blocks view	Bend	3	
Viewing	shade, beautiful in the light	cold beer	Shade	nothing	Bend	3	
Viewing			Beautiful	Nothing	Illinois	8	
Wading	Free, close	Nothing	No one else was in this spot	Ice cream	Bend	1	
Wading/ puppy to water intro	cool water	better maps with safe entry points	gradual entry	closer bathroom	Bend	2	Stupid Questions
Wading/ tubing	awesome, beautiful	no glass on the ground, BBQ grill	free, easy access	nothing	Bend	10	

Farewell Bend Beach 4:30-5:30 p.m. 7/26/2019 90 Degrees Sunny

<i>Recreation Activity</i>	<i>What do you like about recreating on the river?</i>	<i>What would make your recreating experience better on the river?</i>	<i>Where are you from?</i>	<i>What, if anything, would make the experience of accessing the river better here?</i>	<i>Where are you from?</i>	<i>Group Size</i>	<i>Other Comments</i>
Dog + Human swimming	What you do to cool off after work, cool down	get rid of rocks at RB Beach	it is a beach, sand	parking	Bend	1	
Jumping/ swimming	feels good in the hot sun	creating better jumping spots that are legal	sandy beach	Pathway to and from the water	Bend	2	more loading zones & monitor them more because people park and leave car there. Better signs
Paddle Boarding/ swimming	Left Bridge rapids and hanging on the rocks	more and bigger beaches	bike right to it	parking	Bend	2	Need a splash pad in bend in general, more beaches
Swimming	cool, clean	Nothing	Shallow	better parking, more	Bend	4	
Swimming	family spot	Nothing	sandy	more parking, less people	Bend	4	Limited parking is both good and bad b/c limits people but tough to get a spot
Swimming	cool off	softer sand	ride bikes, close to home, family friendly	bike rack, dock in the water	Bend	8	

# Survey Overview and Results

## Summary continued

Farewell Bend Beach 4:30-5:30 p.m. 7/26/2019 90 Degrees Sunny

<i>Recreation Activity</i>	<i>What do you like about recreating on the river?</i>	<i>What would make your recreating experience better on the river?</i>	<i>Where are you from?</i>	<i>What, if anything, would make the experience of accessing the river better here?</i>	<i>Where are you from?</i>	<i>Group Size</i>	<i>Other Comments</i>
Viewing	the water, cooling		close by/ beautiful	more family amenities like shade and benches	Bend	2	thinks that a legal jumping spot would cut down on illegal bridge jumping
Wading/ swimming	it's nice	going floating	easy access, no rocks on the beach	nothing	San Diego, CA	2	wanted to be interviewed --> walked right up to me

Sawyer Park 11:30 am- 12:30 p.m. 7/27/2019 74 Degrees Sunny

<i>Recreation Activity</i>	<i>What do you like about accessing the river here?</i>	<i>What, if anything, would make the experience of accessing the river better here?</i>	<i>Where are you from?</i>	<i>Group Size</i>	<i>Other Comments</i>
Dog walking/ viewing	I don't know/ driving my RC on rocks	nothing	Bend	1	
fishing	close to our house	more fish	Bend	3	
Photo shoot/ viewing	Great place for pictures	nothing	Bend	2	
Sitting by the edge/ hanging out	Private, not crowded, came here as a kid	bathroom on RL	Bend	2	

Cedarwood Trail Head 2:00-3:00 p.m. 8/3/2019 85 Degrees Sunny/Windy

<i>Recreation Activity</i>	<i>What do you like about accessing the river here?</i>	<i>What, if anything, would make the experience of accessing the river better here?</i>	<i>Where are you from?</i>	<i>Group Size</i>	<i>Other Comments</i>
Floating	long float, less people	more parking	Bend	2	
Floating	close to friend's house	bigger rapids	New Hampshire	4	1 dog
Floating	longer float	never been, bar, plug in for tubes	Bend	7	
Swimming	close by house	bigger swimming space, push rock wall further over to create bigger space	Bend	4	Street parking needs to be enforced, the signs do not look legit. People are still parking on the street
viewing with swimming dog	not steep, don't won't fall in	nothing	Bend	1	
Viewing, biking	trail along the river	wooden ramps to the water edge, boat service in the water	Germany	2	



# Survey Overview and Results

## Summary continued

Pageant 3:30-4:15 p.m. 8/4/2019 90 Degrees Occasional thunder/cloudy

<i>Recreation Activity</i>	<i>What do you like about accessing the river here?</i>	<i>What, if anything, would make the experience of accessing the river better here?</i>	<i>Where are you from?</i>	<i>Group Size</i>	<i>Other Comments</i>
Floating	less people	less sea weed	Bend	5	
kayaking	house is right there, walking distance	nothing but people might say parking if they don't live right here	Bend	2	
Paddle Boarding	car parked close by	nothing	Bend	2	

Riley Ranch 10:10-11:30am 8/4/2019 76 Degrees Sunny

<i>Recreation Activity</i>	<i>What do you like about accessing the river here?</i>	<i>What, if anything, would make the experience of accessing the river better here?</i>	<i>Where are you from?</i>	<i>Group Size</i>	<i>Other Comments</i>
Viewing	can see the rapids but also smooth water	nothing	Bend	1	AP 2
Viewing	first time, easy to get to	nothing	Portland area	2	AP 6
Viewing	See the fish, feet in water, close to water	Add official view point at UAP 7	Bend	2	AP 6
Viewing	like the info at the start of access points	nothing	Newport Beach, CA	2	AP 6

Riverview 9:00-10:00 a.m. 8/11/2019 56 Degrees Windy/Sunny

<i>Recreation Activity</i>	<i>What do you like about accessing the river here?</i>	<i>What, if anything, would make the experience of accessing the river better here?</i>	<i>Where are you from?</i>	<i>Group Size</i>	<i>Other Comments</i>
Canoeing	20 ft dam/waterfall, great for white water kayaking	Grooming(tlc), log for easier boat entry	Bend	4	
Viewing	Peacefulness	nothing	Sunriver	1	Log to slide into the water to prevent erosion. Also, at cedar wood and river rim. Communicate with Bend White Water FB group if you want survey info. Shaky past with communication between BWW FB group and BPRD

Columbia 9:05 a.m. 8/15/2019 63 Degrees Sunny

<i>Recreation Activity</i>	<i>What do you like about accessing the river here?</i>	<i>What, if anything, would make the experience of accessing the river better here?</i>	<i>Where are you from?</i>	<i>Group Size</i>	<i>Other Comments</i>
Viewing	Close to our house, walking distance	More benches for us old folk	Bend	2	

# Survey Overview and Results

## Summary continued

McKay

11:15 am-12:15 p.m.

8/15/2019 74 Degrees Sunny

<i>Recreation Activity</i>	<i>What do you like about accessing the river here?</i>	<i>What, if anything, would make the experience of accessing the river better here?</i>	<i>Where are you from?</i>	<i>Group Size</i>	<i>Other Comments</i>
Dog is swimming/viewing	live close by	less tourist	Bend	1	
Floating	good for a dog break and raft check	Beer cart	CA	2	
Floating	close to where we are staying	Continue the grass landscaping all the way, get rid of beach	New York	2	
Floating	can ride the rapids again, easier exit than before the rapids	more benches	Sisters	2	
Floating	shuttle down to car is easy for visitors	nothing	Portland	4	Works for the district as a receptionist
kayaking	good parking, access is easy	widen the pathway near the rapids b/c it gets really congested really easily	Bend	1	
surfing	Usually parking is good, short walk from car to wave	nothing	Bend	1	
surfing	walking across is satisfying	Waterfall feature maybe	Bend	2	
surfing	saw it yesterday and it looked cool	nothing	LA	6	
Swimming	calm entry, a little bit of everything	More parking spots and seating like benches	Bend	4	
Viewing	Re-living old times with a friend	Less people	Bend	2	Would be nice to have some type of storage like under a bench (mid river patch) or mini lockers (before you cross) so surfers can safely store keys and such
viewing	seeing the surfers	recycling bins, shaded seating area like the gazebo	Bellingham, WA	2	
Viewing/ swimming	kids can play in the sand	nothing, less people	Bend	2	
Wading	Parking is easy. Nice and shallow	Beer truck	Olympia, WA	2	

# Survey Overview and Results

## Summary continued

McKay

3:30-4:15p.m.

8/17/2019 82 Degrees Windy/Sunny

<i>Recreation Activity</i>	<i>What do you like about accessing the river here?</i>	<i>What, if anything, would make the experience of accessing the river better here?</i>	<i>Where are you from?</i>	<i>Group Size</i>	<i>Other Comments</i>
Floating	water is nice and cool, cool off before the hot sand	rocks hurt right in the water so extend sand	Bend	2	
Floating	it is fun, great to finish after the rapids	nothing	Portland	2	change the little rapids every once in a while
Floating	necessary to regroup	safer. Feel like it was advertised differently when they were making the public pay for it	Bend	3	
Floating	good place to wait for friends	beer, recycling, trash	Portland	5	
Floating	got to do it again, go down the rapids	good how it is	Portland	6	Getting out before the rapids should be made easier and not as deep, maybe add a cement block. Maybe have this exit be a bit earlier as well because it gets very clogged
Floating	easy, lots of space	nothing	Portland	9	
Floating	can just stand up and walk out easily	nothing	Grants Pass	about 15+	
paddle boarding	meeting up with friends	nothing	Bend	6	
surfing	access to surfing	another wave for surfers	Colorado	4	
swimming	watching people flip, excellent parking	more rocks to create more flipping	Bend	1	
swimming	convenient, good place to people watch	Swim up bar	Sacramento, CA	3	
viewing	lively	Beer stand, lifeguard on duty	Bend	2	
viewing	close to where we are staying	better signage to tell people to keep on floating down to Drake	Vancouver, WA	4	



# Survey Overview and Results

## Summary continued

Miller's Landing 3:15-4:15p.m. 8/16/2019 83 Degrees Sunny

<i>Recreation Activity</i>	<i>What do you like about accessing the river here?</i>	<i>What, if anything, would make the experience of accessing the river better here?</i>	<i>Where are you from?</i>	<i>Group Size</i>	<i>Other Comments</i>
swimming/ wading	can rest right on the rocks	nothing	Bend	1	AP 1
viewing	convenient	maybe easier access into the water for tubers	Van life	3	AP 1
Viewing	scenic	nothing, plant more native plants	Portland	2	AP 1: this spot is better than the other and doesn't smell like dog poo
Swimming	not as busy	safer way to get in the water	Bend	5	AP 2
Viewing	beautiful	less dog poo, dog bag station near entrance	Bend	4	AP 2

River Rim 5:30 p.m. 8/16/2019 80 Degrees Sunny

<i>Recreation Activity</i>	<i>What do you like about accessing the river here?</i>	<i>What, if anything, would make the experience of accessing the river better here?</i>	<i>Where are you from?</i>	<i>Group Size</i>	<i>Other Comments</i>
White Water Kayaking	Beginning of the Meadow camp run. Good parking	improve the trail down. Maybe steps and away to help prevent erosion	Bend	2	parking at cedarwood trail head needs to be improved, not enough spots

# Appendix A: Data Collection Forms

## River Access Plan Data - Observations Over Time McKay

Instructions: Count number of trips entering or exiting Riparian Zone or Access Point. For example, a person carrying a paddleboard walking into the access point and into the river would count as 1. When that person exits the river/access point it will count as 1 more. This counts number of crossings into or out of the access point from either direction (river and non-river entry/exit).



Date/Time:	Location (park, location details):	Authorized number of access points:  Unauthorized number of access points:	Data Collector:  	Weather (high/low temperature, conditions):
------------	------------------------------------	--	-------------------------	---



Access Point	Count dogs viewing*	Count dogs swimming*	Count viewing	Count wading/ swimming	Count tubes/ raft	Count paddle boards	Count anglers	Count kayak/canoe	Count surfers	Other/ Notes

\* Dogs will only be counted in "count of dogs," not activities.

# Appendix A: Data Collection Forms

## River Access Plan Data - Observations Over Time McKay

Instructions: Count unique number of people and dogs over time, no matter how many times they cross the riparian buffer zone

Date/Time:	Location (park, location details):	Authorized number of access points:  Unauthorized number of access points:	Data Collector:	Weather (high/low temperature, conditions):
------------	------------------------------------	--	-----------------	---

Access Point	Count of dogs	Count Adults	Count Kids	Other/ Notes