

OFF-LEASH AREA IMPROVEMENTS

PICKLEBALL AND BASKETBALL COURTS

ACCESS FROM DESCHUTES MARKET ROAD

ACCESS IMPROVEMENTS

MAINTENANCE AREA IMPROVEMENTS

ARTIFICIAL TURF INFIELDS AND SPORTS FIELD LIGHTING

FUTURE ATHLETIC FIELDS - NOT INCLUDED IN PHASE 5

**PINE NURSERY PARK
BEND PARK AND RECREATION DISTRICT**

BEND PARK AND RECREATION DISTRICT
3750 NE Purcell Blvd. Bend, OR 97701

Drawn By: AS
Checked: MK
Project #: 23.006
Date: Feb. 23, 2024

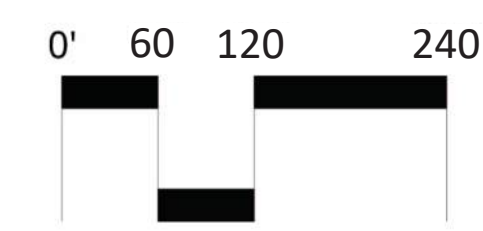
SHEET TITLE

OVERALL
DIAGRAM

SHEET #

L001

1" = 120'-0"





**PINE NURSERY PARK
BEND PARK AND RECREATION DISTRICT**

BEND PARK AND RECREATION DISTRICT
3750 NE Purcell Blvd. Bend, OR 97701




Drawn By: AS
Checked: MK
Project #: 23.006
Date: Feb. 23, 2024



SHEET TITLE

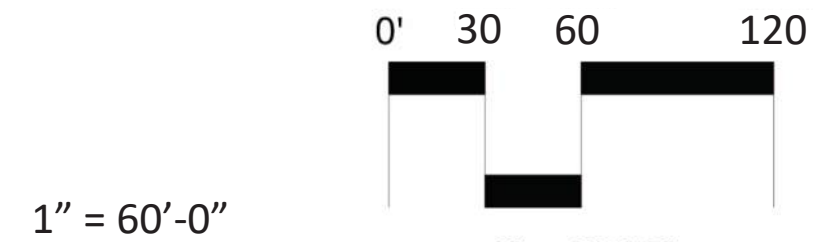
**OVERALL PATHWAY
LAYOUT**




SHEET #

L003

-  PEDESTRIAN ASPHALT PATHWAY
6'-0" WIDTH, TYP.
-  PEDESTRIAN ASPHALT PATHWAY
8'-0" WIDTH, TYP.
-  PEDESTRIAN ASPHALT PATHWAY
12'-0" WIDTH, TYP.

-  TRAIL SURFACING AGGREGATE
6'-0" WIDTH, TYP.
-  PEDESTRIAN CONCRETE PATHWAY
WIDTH VARIES, TYP.



- LEGEND**
-  EXISTING TREES
 -  CONCRETE WALK
 -  REVEGETATED AREAS

**PINE NURSERY PARK
BEND PARK AND RECREATION DISTRICT**
BEND PARK AND RECREATION DISTRICT
3750 NE Purcell Blvd. Bend, OR 97701

Drawn By: AS
Checked: MK
Project #: 23.006
Date: Feb. 23, 2024

SHEET TITLE

OAS SHED
WITH NEW ROAD

SHEET #
L301



EXISTING CONCRETE PAVING TO BE EVALUATED AND RE-PLACED IF NOT ADA COMPLIANT

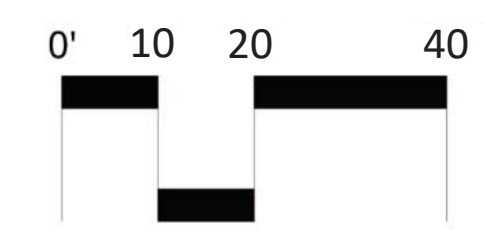
EXISTING STRUCTURE

ASPHALT PAVING (VEHICULAR)

GATED VEHICULAR ENTRY

PERSON GATE

1" = 20'-0"





LEGEND



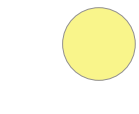
EXISTING TREES



NATURAL TURF OUTFIELD
Existing natural to remain



ARTIFICIAL TURF INFIELD



FIELD LIGHTING - SEE SHEET L501

**PINE NURSERY PARK
BEND PARK AND RECREATION DISTRICT
BEND PARK AND RECREATION DISTRICT
3750 NE Purcell Blvd. Bend, OR 97701**

Drawn By: AS
Checked: MK
Project #: 23.006
Date: Feb. 23, 2024

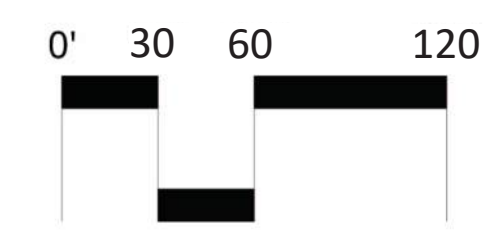
SHEET TITLE





**EXISTING ATHLETIC
FIELDS RENOVATION**

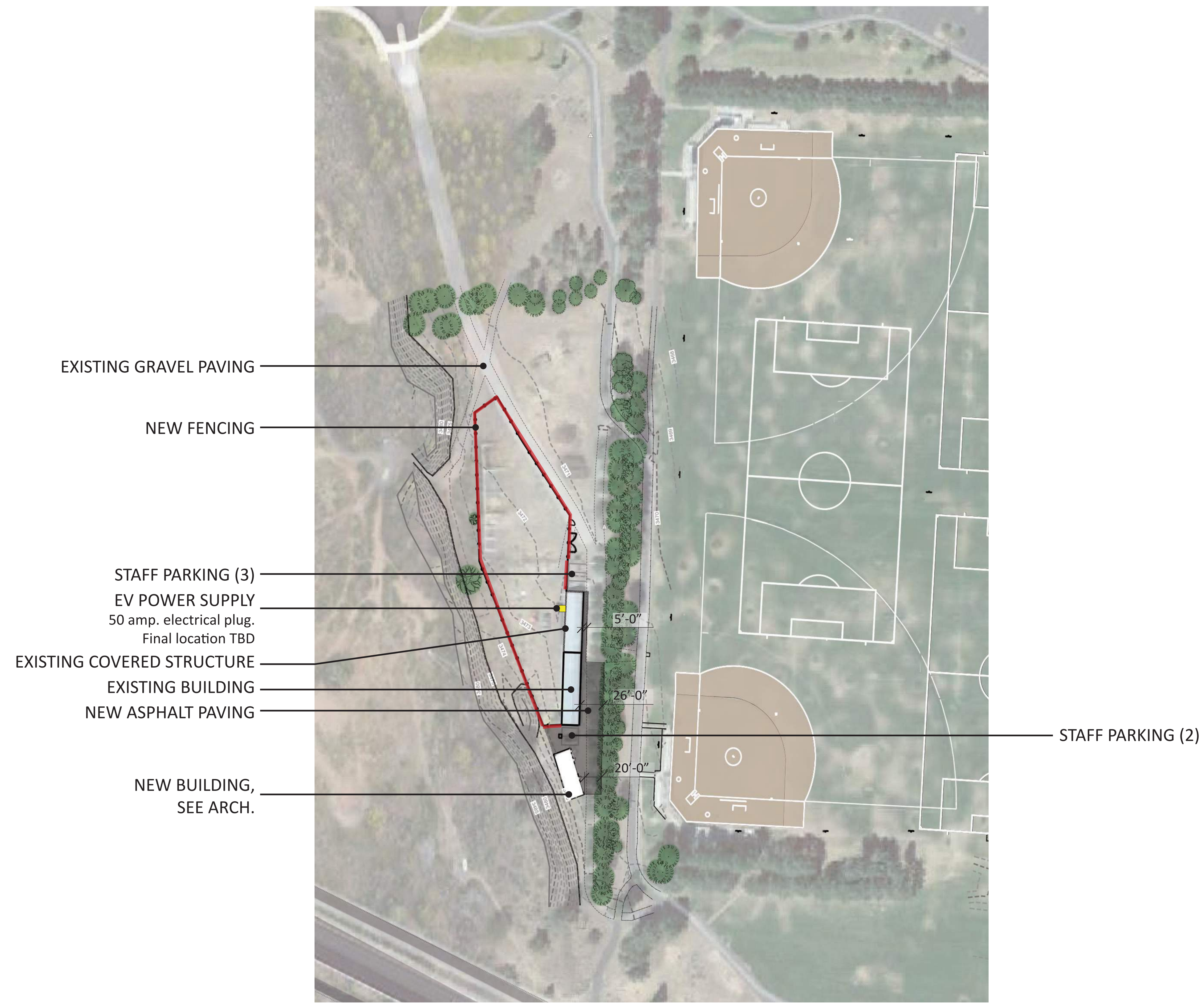
SHEET #

L401

1" = 60'-0"



- LEGEND**
-  EXISTING TREES
 -  ASPHALT PAVING
 -  EXISTING GRAVEL PAVING
 -  FENCING
6' ht. galvanized chain link



**PINE NURSERY PARK
BEND PARK AND RECREATION DISTRICT
BEND PARK AND RECREATION DISTRICT
3750 NE Purcell Blvd. Bend, OR 97701**

Drawn By: AS
Checked: MK
Project #: 23.006
Date: Feb. 23, 2024

SHEET TITLE

MAINTENANCE YARD

SHEET #

L701

