

**PARK ENTRY**  
**HOLLINSHEAD PARK | BEND, OR**

OPEN HOUSE  
 MAY 20, 2024







**LEGEND**

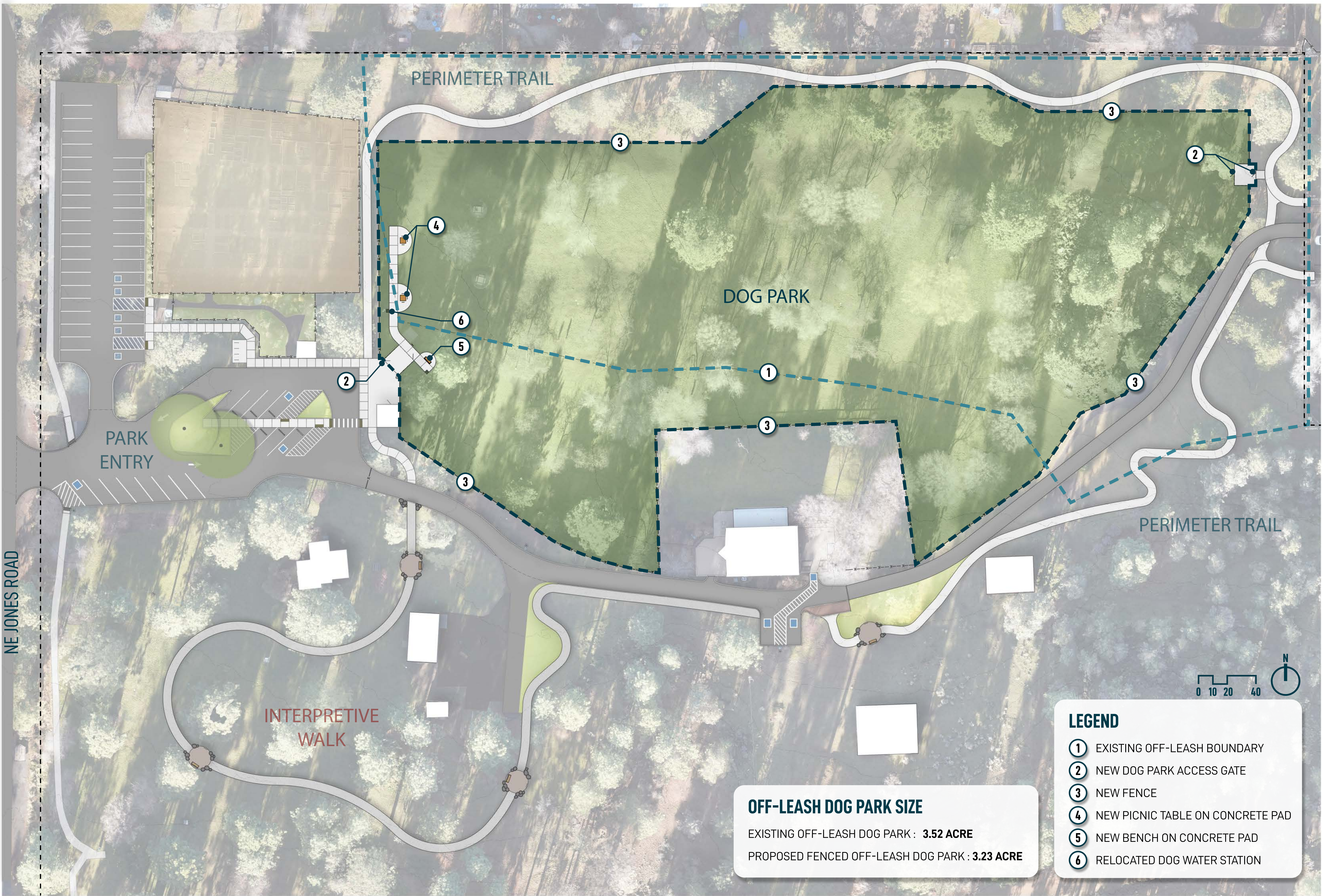
- ① EXISTING PARKING
- ② EXISTING COMMUNITY GARDEN
- ③ EXISTING DEMONSTRATION GARDEN
- ④ NEW ANGLED PARKING W/ ADA STALLS
- ⑤ NEW BIKE RACK
- ⑥ NEW SIDEWALK CONNECTION
- ⑦ NEW RESTROOM BUILDING
- ⑧ EXISTING PONDEROSA PINE TREES
- ⑨ NEW DOG PARK ENTRY
- ⑩ NEW MAINTENANCE ACCESS ROAD

**PARK ENTRY: ENLARGEMENT**  
**HOLLINSHEAD PARK | BEND, OR**

OPEN HOUSE  
MAY 20, 2024







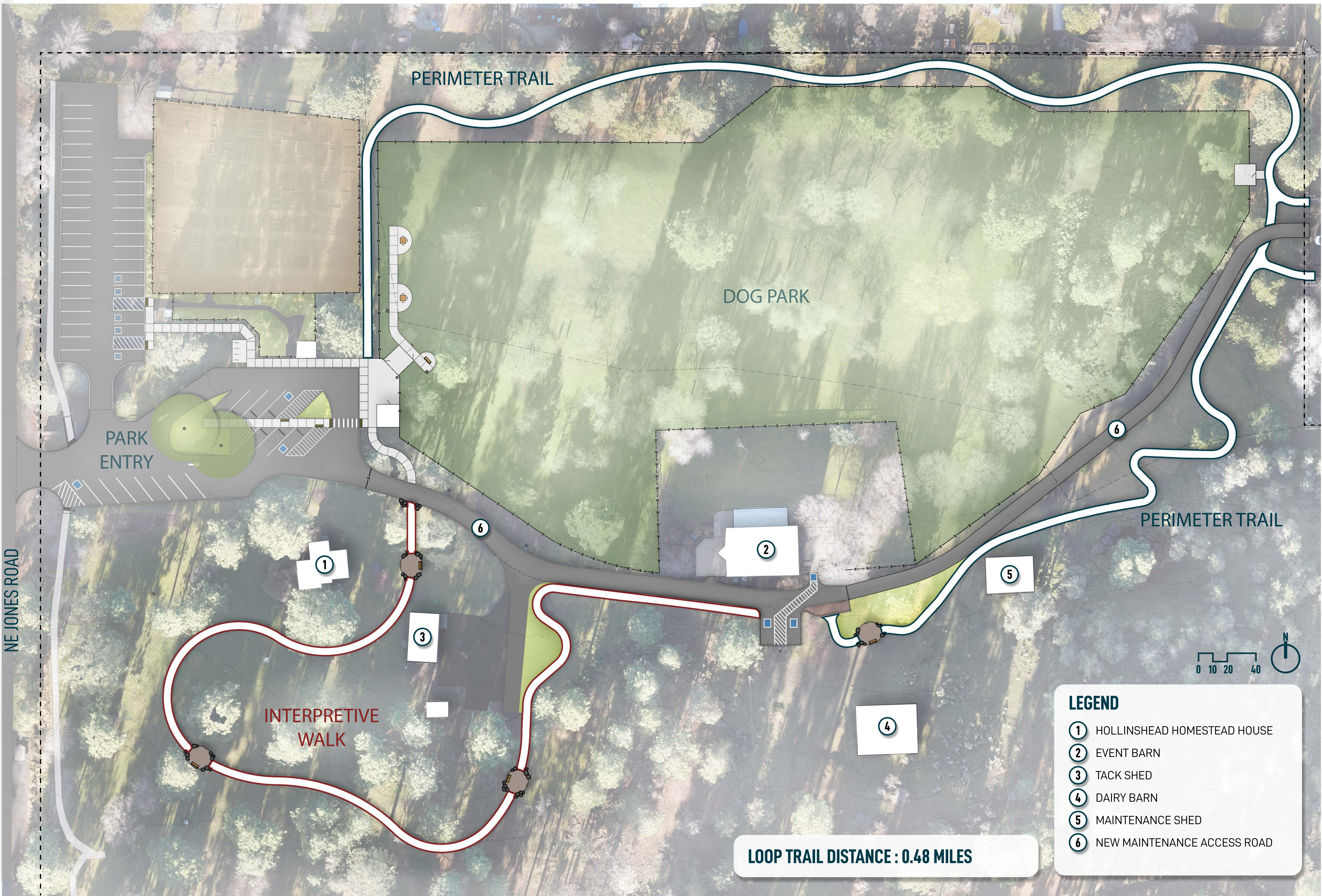
# FENCED OFF-LEASH DOG PARK

HOLLINSHEAD PARK | BEND, OR

OPEN HOUSE  
MAY 20, 2024





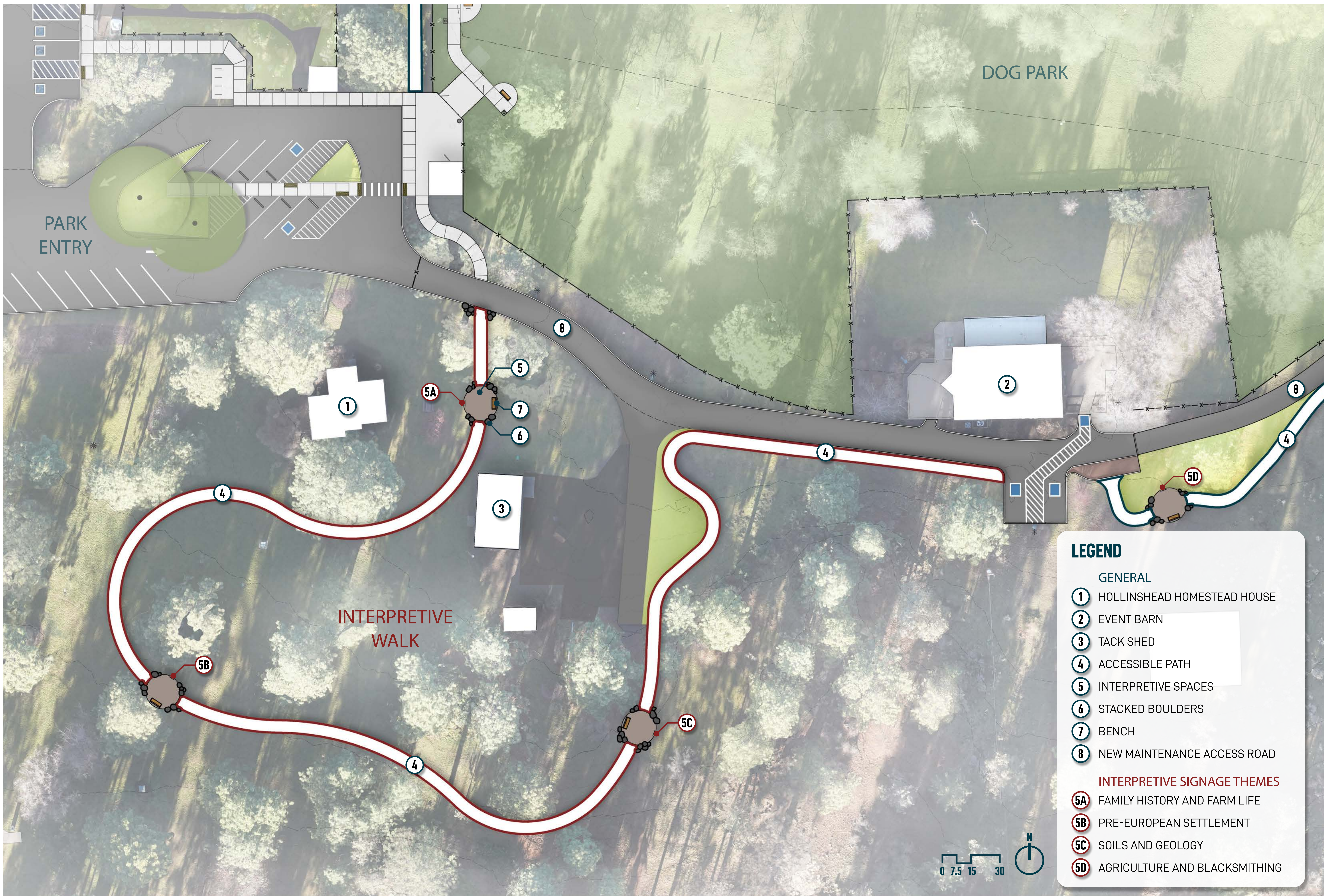


**ACCESSIBLE TRAIL LOOP**  
**HOLLINSHEAD PARK | BEND, OR**

OPEN HOUSE  
 MAY 20, 2024







# INTERPRETIVE TRAIL: ENLARGEMENT

HOLLINSHEAD PARK | BEND, OR

OPEN HOUSE  
MAY 20, 2024

