



Bend Metro Park & Recreation District

July 16, 2024

Board of Directors

Agenda and Reports

www.bendparksandrec.org



play for life



Our Vision

To be a leader in building a community connected to nature, active lifestyles and one another.

Our Mission

To strengthen community vitality and foster healthy, enriched lifestyles by providing exceptional park and recreation services.

We Value

Excellence by striving to set the standard for quality programs, parks and services through leadership, vision, innovation and dedication to our work.

Environmental Sustainability by helping to protect, maintain and preserve our natural and developed resources.

Fiscal Accountability by responsibly and efficiently managing the financial health of the District today and for generations to come.

Inclusiveness by reducing physical, social and financial barriers to our programs, facilities and services.

Partnerships by fostering an atmosphere of cooperation, trust and resourcefulness with our patrons, coworkers and other organizations.

Customers by interacting with people in a responsive, considerate and efficient manner.

Safety by promoting a safe and healthy environment for all who work and play in our parks, facilities and programs.

Staff by honoring the diverse contributions of each employee and volunteer, and recognizing them as essential to accomplishing our mission.



District Office

799 SW Columbia St., Bend, Oregon 97702 | www.bendparksandrec.org | (541) 389-7275

BOARD AGENDA COMMUNICATION

AGENDA DATE:	July 16, 2024
SUBJECT:	Deschutes River Trail South Project Update
STAFF RESOURCE:	Henry Stroud, Planner
PREVIOUS BOARD ACTION:	Adopted Resolution No. 409, 2/20/18, Received Conflict Assessment Report 12/18/18, Adopted Resolution No. 419, 2/19/19
ACTION PROPOSED:	None
STRATEGIC PLAN:	
Pillar:	Operations & Management Practices
Outcome:	A balance between caring for existing infrastructure and new development
Strategy:	Ensure the district is maintaining its adopted level of service targets

BACKGROUND

This presentation will provide an overview of the Deschutes River Trail (DRT) South and will cover the following topics:

- planning framework and project background,
- project history and summary of major milestones,
- recent project advocacy and community feedback, and the
- results of the district's most recent Community Needs Assessment Survey

The DRT South Project is designed to close one of the last remaining gaps on the trail. The project was first identified in the City of Bend's *Urban Trail Plan (1996)*, and more recently identified in the district's *Comprehensive Plan (2018)* and the *Deschutes National Forest Alternative Transportation Feasibility Study (2015)*, which identifies projects that could enhance non-motorized access to the Deschutes National Forest.

The goal of this project is to extend the existing portion of the Deschutes River Trail in southwest Bend to the Deschutes National Forest trail system within the Rim Rock (aka Good Dog) trailhead and recreation area.

In 2012, voters approved a bond measure which provided funds towards completion of the Deschutes River Trail and the project was included in a list of projects that could be funded through the bond measure. However, the project never successfully moved past preliminary planning due to complications with State Scenic Waterway rules and organized opposition from environmental groups and individuals in the community. There were also two attempts to prohibit the project through the State Legislature, both of which failed.

In 2018, the district passed Resolution No. 409 (attachment A) that called for a collaborative community process to consider how to provide trail connectivity in the area while seeking to provide a benefit to the environment. The district subsequently hired Oregon Consensus to provide recommendations on how to move forward. The conflict assessment report (attachment B) indicated that there was no clear community consensus and that the project should be delayed until such time that a consensus/trust building process could take place. In response, the district's board of directors passed Resolution No. 419 (attachment C) which removed the project from the Capital Improvement Plan and from the System Development Charge eligible projects list and asked district staff to cease work on the project until such time that there was broad community consensus on how to move forward.

The district completed a statistically valid Community Needs Assessment Survey in 2023 which indicated broad support for the project via two questions. When asked to rank their support for various proposed actions by BPRD to improve the recreation system, 50% of respondents indicated they were very supportive and 27% indicated they were somewhat supportive of completing "the footbridge crossing of the Deschutes River to connect the Deschutes River Trail to trails in the National Forest in the south part of Bend." 13% were neutral, 3% were not supportive, 5% were not at all supportive, and 2% were not sure/don't know (n=819). Additionally, respondents were asked "How supportive are you of completing a footbridge crossing of the Deschutes River, which would connect the Deschutes River Trail on the south end of Bend to the Deschutes National Forest, near the Rimrock Trailhead (Good Dog off-leash area)" 46% were very supportive, 25% were somewhat supportive, 15% were neutral, 5% were not supportive, 6% were not at all supportive, and 4% were not sure/don't know (n=840).

BUDGETARY IMPACT

None

STAFF RECOMMENDATION

None

MOTION

None

ATTACHMENT

Attachment A: BRPR Resolution No. 409

Attachment B: Southern Connection of the Deschutes River Trail Conflict Assessment Report

Attachment C: BPRD Resolution No. 419

BMPRD RESOLUTION NO. 409**A RESOLUTION OF THE BEND METRO PARK AND RECREATION DISTRICT BOARD OF DIRECTORS
ADOPTING PROCEDURES FOR A COMMUNITY PROCESS TO DETERMINE BEST ROUTE AND
METHOD TO CONNECT THE DESCHUTES RIVER TRAIL ALONG BEND'S SOUTHERN BOUNDARY**

Whereas, Bend Metro Park and Recreation District (the "District") has a responsibility to plan for connectivity of the Deschutes River Trail, equitable access to outdoor recreation and education opportunities throughout the District, and fully account for impacts to fish and wildlife habitat in the process; and,

Whereas, since the conclusion of the 2017 State Legislative Session, the District has taken no action to pursue a bicycle and pedestrian bridge across the Deschutes River at or near Bend's southern boundary,

Whereas, in the District's 2017 comprehensive plan needs analysis, trails were the top ranked need among Bend residents; and,

Whereas, a bicycle and pedestrian bridge at or near Bend's southern boundary is included in local transportation system plans, recommended in the Deschutes National Forests Alternative Transportation Feasibility Study (2015), is identified in the District's system-wide trails plan, and is one of several projects specifically called for in Measure 9-86 (2012); and,

Whereas, trails offer healthy recreation and transportation options to communities, allowing people of all ages to walk and bike to key destinations, engage with community and connect with nature; and,

Whereas, the District believes the best way to build the next generation of conservation supporters involves opportunities for them to enjoy the outdoors in an environmentally sound manner; and,

Whereas, the District is the park and recreation provider for the City of Bend and manages 49 percent of the riverfront within the District boundaries; and,

Whereas, the District has a history of rehabilitating riverfront habitat along the banks of the Deschutes River on properties owned by the District and is committed to continuing and improving upon past work with community partners to rehabilitate and manage riverfront habitat; and,

Whereas, the District recognizes that there have been past processes, including an Oregon Park and Recreation Department (OPRD) process about whether to alter scenic waterway rules and a District process to select a desired trail alignment for a possible bridge, and that neither process fully considered conservation goals within the reach of the river where a potential bridge may be located; and,

Whereas, the District proposes to participate in a broad community process to develop and build community support for a preferred trail alignment connecting the Deschutes River Trail along the Deschutes River;

Whereas, the preferred trail alignment should offer net benefits to nearby fish and wildlife habitat; and,

Whereas, the District has a responsibility to ensure that habitat impacts of recreation are minimized to the greatest degree possible. Wherever possible, investments in outdoor recreation and education are accompanied by conservation investments and seek to provide habitat improvements.

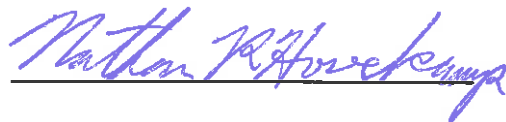
NOW THEREFORE, the Board of Directors of the Bend Park and Recreation District does hereby resolve as follows:

1. The District supports a process to consider connection of the Deschutes River Trail, conducted by a neutral, third-party facilitator with demonstrated expertise and success facilitating natural resources, recreation and community issues.
2. The fundamental question that the process would seek to address is: "How should the community provide for trail connectivity in this reach of the Upper Deschutes River to provide for human needs while seeking to provide a benefit to fish and wildlife habitat?"
3. The District understands that a community process may not lead to a bridge across the Deschutes River at or near the location in question. Conversely, the District would hope that other participants accept the possibility that a bridge, if properly designed and conditioned upon achieving certain conservation outcomes, may stand out as the preferred alternative.
4. The District supports a data-driven process informed by the most current assessments of the impacts of recreation activities, trails and bridges on river ecosystems and wildlife habitat within the area in question, as well as the growth and development projections for the Bend metropolitan region. The process should include an assessment and evaluation of past, present and desired future conditions in order to identify the most appropriate ecological outcomes.
5. The process will fully consider conservation measures, including both rehabilitation and operational, that would seek to provide a benefit to fish and wildlife habitat while providing for trail connectivity in partnership with the USFS and conservation groups.
6. The District supports a community process where participants would include a group of representatives from different stakeholder groups (to be vetted by the facilitator) including:
 - Community and neighborhood interests
 - Recreation interests

- Conservation and environmental interests
 - Relevant local, state and federal agencies including the United States Forest Service, Oregon Department of Fish & Wildlife, Oregon Parks and Recreation Department, City of Bend, Deschutes County and Bend Park and Recreation District.
7. The District resolves to honor any broadly-supported outcomes that aim to complete the Deschutes River Trail and asks other participants to do the same.
 8. District will not pursue any other avenues to plan, develop or construct a bridge within the Upper Deschutes River, or support such activities by others, while this process is underway and until it has concluded.
 9. District supports a timely initiation of these procedures.

District's goal is that such a process would not only resolve a very complex local matter in the context of a specific State Scenic Waterway, but participants in the collaborative process would gain a better understanding of how to address concerns over recreation projects on Scenic Waterways statewide. We ask the State Legislature to take into consideration the potential for collaborative problem solving among local conservation, environmental, recreation and community interests.

ADOPTED by the Board of Directors on this 20th day of February 2018.



Nathan Hovekamp, Board Chair

Attest:



Don P. Horton, Executive Director



The **Mary Orton** Company
TRANSFORMING HOW PEOPLE WORK TOGETHER

Southern Connection of the Deschutes River Trail Conflict Assessment Report

prepared on behalf of Oregon Consensus



by

Mary Orton, The Mary Orton Company, LLC
Bend, Oregon

mary@maryorton.com ☞ www.maryorton.com ☞ 702.210-9642

Final Report, December 15, 2018

Table of Contents

Executive Summary	1
Introduction	2
Background on the Issue	2
Oregon Consensus	3
Role of The Mary Orton Company	3
Methodology.....	4
Report Organization	4
Interviewees' Comments	6
Concerns and Interests	6
Laws and Regulations	6
Wildlife	7
Access, Connectivity, and Increased Use	7
Off-Leash Dogs	8
Local vs. State/National Decision.....	9
Neighborhood Impact.....	9
Social Equity and Environmental Justice.....	9
Barriers and Complicating Factors	9
Trust	10
Public Processes.....	10
District Management.....	10
Wildlife.....	10
Resources.....	10
Legislative Efforts	10
Alternatives	11
Eminent Domain	11
Elected and Appointed Officials	11
Claiming Support	11
Impacts.....	11
Bridge Location	11
Differences as to Fact.....	12
Level of Development.....	12
Previous Processes	12
Wild and Scenic Regulations.....	12
State Scenic Waterways Restrictions	12
Wildlife Presence.....	12
Conservation Easement	12
Impacts at Rimrock	13
Lack of Data.....	13
Polarization	13
Capacity of Stakeholders	13
Laws and Regulations	13
BPRD's Experience with Restoration	13

Possible Common Ground from Interviewees	13
Possible Alternatives from Interviewees.....	14
Interviewees' Perspectives on a Collaborative Process.....	15
Recommendations	16
Introduction	16
Collaborative Opportunity.....	16
Step 1: Trust-Building Conversations	16
Step 2: Neutral Convenor	17
Step 3: Joint Fact-Finding	17
Step 4: Community Collaborative.....	18
Convenor.....	18
Facilitator	18
Process Development.....	18
Scope	18
Funding.....	18
Stakeholders to be Involved	18
Board Action	19
Transparency.....	19
Allow Enough Time	19
Consensus.....	19
Summary	20
Attachment A: BPRD Board of Directors Resolution	21
Attachment B: Interview Questions	23
Attachment C: Interviewees	25
Attachment D: Process Ideas from Interviewees	26

Executive Summary

The areas close to the Deschutes River are precious: in general, people who are there want to protect what they have, and those who are not desire more access. All persons interviewed for this report are concerned about avoiding negative environmental impacts.

The issue of a southern crossing of the Deschutes River addressed in this report is a controversial one. After being part of a Bend Park and Recreation District bond measure that voters approved in 2012, it has been the subject of several public processes with diverse purposes and outcomes, as well as two unsuccessful legislative attempts to prohibit a bridge.

This conflict assessment report, commissioned by the Bend Park and Recreation District through Oregon Consensus, was designed to advise whether and how a collaborative agreement-seeking process might help address ongoing concerns about the alignment and construction of a trail segment to connect the Deschutes River Trail on the south end of Bend. It is the result of 25 face-to-face interviews of 29 people from September 9 through October 9, 2018. It summarizes their concerns and interests, as well as barriers to addressing those concerns.

The concerns of stakeholders are complex and include wildlife, the ecosystem, social equity, access, neighborhood impacts, private property rights, and erosion of environmental protections. The issue has been marked by the loss or simply lack of trust, misinformation, wildly divergent opinions as to facts, lack of data, and polarization among stakeholders. Considering these and other factors, BPRD has several options at this point, including forgoing the project of a crossing in this reach of the river.

Should BPRD and stakeholders decide to proceed with a collaborative process, this report contains a number of recommendations intended to help shape that process, including a stepwise approach that would test at each step whether there is adequate commitment to support a full collaborative process. This stepwise approach would include small private facilitated conversations to rebuild trust, the engagement of a neutral convenor, a joint fact-finding process, and then, only if indicated, the initiation of a community collaborative with a number of elements that would help it be successful.

We also recommend that such a process address more than simply a crossing. It should include broader concerns that were evident in the interviews: the tension between equitable recreational access and environmental protection in a growing area. We also recommend that participants include those who are traditionally underserved with recreational opportunities, residents who live in different parts of the community, and those who live near any possible proposed crossing.

The collaborative group will need enough time to address the differences as to fact and to rebuild relationships and trust, and then generate, evaluate, and choose among alternatives. We estimate this will take at least one year.

We believe that, should BPRD and stakeholders decided to initiate a collaborative process, especially if in alignment with the recommendations herein, they could ensure that the community would benefit. It could offer a way forward for all stakeholders with increased recreational access, environmental protection, and social equity, as well as increase trust and enhanced relationships.

Introduction

BACKGROUND ON THE ISSUE

Bend Park and Recreation District (BPRD or District) is a special tax district, separate from the City of Bend, that is governed by a five-member elected Board of Directors and managed by an Executive Director. BPRD maintains and operates about 3,000 acres of parkland (including 70 miles of trail), offers recreation programs, and manages several facilities.

BPRD's Bond Measure 9-86, approved by voters in 2012,¹ included, among several other projects, "pedestrian crossings connecting the east and west sides of the River Trail." The BPRD does not own land that could be used for such a crossing. The BPRD convened a Citizens Advisory Committee (CAC) in 2015; staff presented several options for a trail alignment and bridge location and the CAC agreed on one that is just outside the Bend Urban Growth Boundary (UGB) on Forest Service land.

All bridge locations studied—some on private land, some on public land—were in a reach of the river that has special designations under the federal Wild and Scenic Rivers Act and the Oregon Scenic Waterways Act, or solely under the Scenic Waterways Act.

According to the Oregon Park and Recreation Department, "The Scenic Waterways Act was created to strike a balance between protecting the natural resources, scenic value, and recreational uses of Oregon's rivers by designating them."² Additionally, "...the Oregon Legislative Assembly designated [as a State Scenic Waterway] portions of the river from the [Wickiup] reservoir to Bend through a bill in 1987. In 1988, Oregon voters approved Measure 7 and added the last, most-downstream mile inside Bend's Urban Growth Boundary."³

The Wild and Scenic Rivers designation extends from Wickiup Dam up to but not within the Bend UGB. The *Upper Deschutes Wild and Scenic River and State Scenic Waterway Comprehensive Management Plan*⁴ (hereinafter "Management Plan"), developed by fifteen federal, tribal, state, and local agencies, notes that the federal Wild and Scenic designation was established due to the "scenic, recreational, cultural, geologic, wilderness, fish and wildlife as well as historic and botanical values" in the area.

The Management Plan also reads (page 42), with regard to the Wild and Scenic reach of the river, "New bridges, transmission, gas or water lines will be discouraged." With regard to the Scenic Waterways reaches of the river, the Management Plan as well as the Upper Deschutes River Scenic Waterway—Oregon Administrative Rule 736-040-0073⁵ reads, "New bridges will not be permitted."

BPRD approached the Oregon Parks and Recreation Department (OPRD), which manages the Scenic Waterways Program, and requested an amendment to the rules to allow a footbridge on the Upper Deschutes. In 2016, the Oregon State Parks and Recreation Commission took comments through a

¹ See page 5 of the voters' pamphlet at <https://weblink.deschutes.org/public/0/doc/13654/Page1.aspx> for the text.

² See <https://www.oregon.gov/oprd/NATRES/scenicwaterways/Pages/index.aspx>.

³ See <https://www.oregon.gov/oprd/Pages/upper-deschutes-scenic-waterway.aspx>.

⁴ July 1996, <https://www.oregon.gov/oprd/docs/deschutes-sww-plan.pdf>.

⁵ See <https://www.oregon.gov/oprd/docs/deschutes-rules.pdf>.

public review and declined to amend the rule. Instead, it directed OPRD staff to look at the rules for that reach at a higher level, rather than specifically targeting the one restriction that affects crossings. That review was completed in 2017 and the decision was made to not to pursue any new rule amendments at that time. The OPRD process included, among other outreach efforts, a citizens' committee named the Upper Deschutes Advisory Group (UDAG).⁶

By this time, the bridge proposal had become controversial. Bills to ban a bridge were introduced in the 2017 and 2018 legislative sessions. They did not pass.

The BPRD Board of Directors adopted a resolution on February 20, 2018 (see Attachment A) that directs the District to enlist the help of a third-party facilitator to help stakeholders resolve how to best connect the Deschutes River Trail on the south end of Bend. Later that year, BPRD retained Oregon Consensus to assist them to find and contract with such a facilitator. Oregon Consensus suggested, and BPRD agreed, to first perform an assessment to ascertain whether initiating a collaborative process would be advisable. This report is the result of that assessment.

OREGON CONSENSUS

Oregon Consensus (OC) is Oregon's legislatively established program for public policy consensus building and conflict resolution, providing assessment, facilitation, mediation, and other services to communities, public entities, and stakeholders on complex public policy issues.

OC issued a Request for Proposals to its Affiliated Practitioner Team for this conflict assessment. After reviewing proposals and consulting with a few stakeholders, including BPRD, OC selected The Mary Orton Company, LLC to perform the assessment.

ROLE OF THE MARY ORTON COMPANY

The Mary Orton Company, LLC (TMOC) is a Bend, Oregon firm that has provided conflict prevention and management services, primarily for environmental and public policy issues and conflicts, throughout the country for 20 years. TMOC also provides facilitation, public involvement, and organization development services.

TMOC worked on behalf of OC to conduct a neutral assessment to advise whether and how a collaborative agreement-seeking process might help address ongoing concerns about the alignment and construction of a trail segment to connect the Deschutes River Trail on the south end of Bend.

The role of TMOC and OC in this assessment is to provide a thorough, accurate, and impartial analysis of the situation, in order to assist stakeholders to increase their mutual understanding of the interests and concerns of others and to help BPRD and stakeholders to decide whether to embark on a collaborative process.

Neither TMOC nor OC is an advocate for any particular outcome or interest except good process, and we conduct our work in a fair, deliberate, and impartial fashion. TMOC and OC staffs are bound by the code of ethics of the Association of Conflict Resolution that reads, in part, "Impartiality means freedom from favoritism, bias, or prejudice." To that end, without endorsing any interviewee's

⁶ See <https://www.oregon.gov/oprd/Pages/upper-deschutes-scenic-waterway.aspx>.

opinions, we have strived to include a summary of all points of view expressed by interviewees in this report.

We hope this report is useful to both BPRD and stakeholders as they decide on their next steps with regard to this issue. Of course, the recommendations in this report are advisory only; the parties will decide whether to move forward with a collaborative process after taking into account the data and recommendations in this report and other information as they choose.

METHODOLOGY

This assessment is based upon data collected through voluntary interviews of stakeholders. Mary Orton conducted 25 face-to-face interviews of 29 people from September 9 through October 9, 2018. Mary developed the interview questions (see Attachment B) in consultation with OC and BPRD.

Mary requested and received from BPRD a list of 19 potential interviewees, 17 of whom agreed to be interviewed. Two of those invited another person from their organizations to attend their interviews. Mary asked all interviewees to suggest others who should be interviewed. Based on those recommendations, Mary contacted 14 additional potential interviewees, 10 of whom agreed to be interviewed. Three of these were interviewed at one time.

The interviews and report structure were designed to encourage frank and open answers to interview questions. Interviewees were told that a report would be written, that their names would be listed as interviewees, and that a summary of their comments would be included in the report. They were also told that their comments would not be attributed to them or their organization. In addition, interviewees were invited to designate any part of their interview as private, in which case it would not be used in the report or shared outside TMOC.

TMOC encouraged feedback on the report. Interviewees were sent a draft version of the report (one that did not include the executive summary or recommendations) and were invited to alert Mary if something important they said was inadvertently not included in the report.

TMOC thanks the interviewees who took the time to share their thoughts, opinions, hopes, and concerns. A list of those invited to be interviewed is in Attachment C.

REPORT ORGANIZATION

An **Executive Summary** precedes this **Introduction**.

The report continues with **Interviewees' Comments**, a detailed summary of comments made by interviewees. Readers should note that not every comment made is included here; it is intended to be a summary of the main themes we heard during the interviews. The first subsection here contains interviewees' concerns and interests, organized by issue area. The next section lists barriers to addressing those concerns and interests. After barriers is a section on possible common ground and a section on possible solutions suggested by interviewees. A reference to process ideas from interviewees completes this section.

The final section of the report contains the recommendations from TMOC for the BPRD and others to consider as they determine next steps and is aptly named **Recommendations**.

Attachments include the BPRD Board of Directors resolution on the subject (referenced above), interview questions, the list of interviewees and interviewees' process ideas for a possible collaboration.

Interviewees' Comments

This section describes, without attribution, the comments and opinions of the interviewees. It is intended to include the full range of opinions shared by interviewees, without indicating how many made one comment or another. The terms “interviewees” and “some interviewees” should be viewed as interchangeable. These terms are not intended to mean all interviewees and could mean one interviewee.

Statements from interviewees are treated as opinions for the purposes of this report, and, because this is not a fact-finding report, they were not checked for accuracy.

Mary Orton, TMOC, and OC neither endorse nor necessarily agree with the following comments and opinions; they are included here because one or more interviewees said them.

CONCERNS AND INTERESTS

This section describes the concerns and interests of the interviewees, and is organized by issue.

Laws and Regulations

Many interviewees cited the federal Wild and Scenic Rivers Act and State Scenic Waterways Act designations when discussing their desires vis-à-vis this reach of the river, whether they were in favor of or against a crossing.

Some interviewees, including some who preferred to have a connection across the river, cited their fear of losing protections on federal and other public lands. They felt that if a bridge were allowed despite the language in the rules, it could set a strong and negative precedent that would weaken the integrity of the Scenic Waterways Act and perhaps also the Wild and Scenic Rivers Act.

Others said with the large number of private homes built on the river, as well as the high level of recreation by people and dogs in the area, this reach of the Deschutes should no longer qualify as a protected area, and so the designations or the rules should be reconsidered. Some said a bridge would not detract from a Wild and Scenic or Scenic Waterways reach, especially when private development has occurred up to the shoreline in those reaches. They also said that there are many examples of Wild and Scenic and Scenic Waterways rivers that have bridges, including the Upper Deschutes, and that a bridge would enhance the corridor because it would allow people to access the river.

Some interviewees said the Wild and Scenic and Scenic Waterways laws and regulations were so restrictive that pursuing a bridge had no legal basis, and would open the BPRD to lawsuits if they continued.

Other laws and regulations were also cited. Interviewees noted that the Deschutes County Transportation System Plan has language supportive of a bike/pedestrian bridge along the

Deschutes River, provided there is adequate outreach to affected property owners.⁷ Others noted the private property rights of residents near any proposed bridge site would have to be respected.

Wildlife

Some interviewees mentioned the potential negative impact on wildlife of a bridge, and resultant increased use by people, dogs, and bicycles, as a reason not to build a bridge. While acknowledging that this is not a pristine river corridor, some said that it is still critical for wildlife, and that impacts to wildlife from a bridge would extend beyond the bridge location, affecting nesting areas as well as migration corridors.

Some cited the Oregon Department of Fish and Wildlife 2015 letter to the Oregon Park and Recreation Department regarding a bridge that said, “Much of the area on the west side of the River between River Miles 174.6 and 172 is part of a U.S. Forest Service Key Elk Management Area as described in the Deschutes National Forest Land and Resource Management Plan (1990). In addition, according to the Deschutes County Comprehensive plan, the west side of the river is part of the Statewide Goal 5 Tumalo Deer Winter Range.”

Some noted that the privately-owned “Thompson Wildlife Sanctuary” was an undeveloped area on the east side of the river that provides a significant habitat for several riparian species, as well as serving as a mule deer crossing point. They were concerned that a bridge at the District’s preferred location and a trail leading to that bridge would irreparably harm the wildlife and the Sanctuary.

Some said they had seen elk in the area in recent years, and others said the elk would return if the dog park were removed and no bridge were built. Others stated that the elk were no longer in the area and that a bridge would not have a negative impact on wildlife. They noted that the area is mostly developed, with subdivisions already built in what used to be elk wintering habitat and a new subdivision being built in the area, and they doubted that a bridge would have a significant impact above and beyond these developments.

Still others said there is no recent study of the current usage level of the area by wildlife, and without those data, no decision should be made about a crossing in the area. Some said if studies showed wildlife were no longer using the area due to current recreational use and housing development, then the area could be considered a “sacrifice area” and increased recreation should be allowed.

While some interviewees opposed to a bridge due to wildlife concerns suggested that a set of eastside trails would address the needs of those residents, others said eastside trails could also have a negative impact on wildlife.

Access, Connectivity, and Increased Use

Interviewees of different opinions about a crossing said they believed that more recreational use of any area would encourage more environmental stewardship of the area.

⁷ See Policy 15.3(m), 15.9, and 15.10 at <https://weblink.deschutes.org/public/DocView.aspx?id=6061&page=12&searchid=bf0cd6e9-f1a3-4d44-b7a4-d39f2f9f2ec1>.

Some interviewees said as Bend grows, more access and more trails would need to be built; other interviewees said as Bend grows, the special places would need more protections. Some interviewees said they wanted to find a balance between conservation and recreation. Some found that balance with a bridge, some without a bridge, and some said while they didn't know where that balance was best found, the cost of access needed to be weighed against the benefits.

Interviewees said additional connections and trails were needed to prevent over-use of existing trails, especially trails along the river. "People are hungry for places to walk along the river," one interviewee said.

Some said a bridge makes good sense from an environmental point of view, instead of requiring people to drive several miles to connect. They noted the potential to reduce car trips, carbon emissions, congestion, and vehicle-miles traveled, helping to achieve the goal of decreased reliance on vehicles and reduction of air pollution. Others thought that increasing trails throughout the city would be a better way to decrease vehicle-miles traveled.

Some interviewees felt a crossing in this reach was fulfillment of a promise of the bond measure they supported and the goal of a continuous trail connection between Tumalo and Sunriver. Others pointed out the projections of significant growth in the southeast part of the City, and viewed a crossing in this area as a way to address the demand for westside recreation by moving people from the east to the west side. They also said a crossing in this area would allow eastside children too young to drive to enjoy the Deschutes National Forest on their bikes.

By contrast, some interviewees said they were concerned about "opening the floodgates of people" coming into the area. At the same time, some opponents said any bridge in that area would only be used by a limited number of people in the River Rim development. (BPRD has not indicated how many additional recreationists are predicted to use the area if a crossing were there, a source of frustration for some interviewees.)

Some interviewees said they consider this a wild section of river, and others noted the list of "outstandingly remarkable values" that warranted designation as Wild and Scenic as reasons to not build a bridge. While they acknowledged houses and dogs already impact the area, they said impact from a bridge would exacerbate the situation. Others noted that the visual impact of the bridge alone would negatively impact others' enjoyment of that reach of the river, and trash and other impacts from the increased numbers of visitors would be detrimental. Others said there could be unintended consequences of a bridge, including increased river use by inexperienced floaters unprepared for the dangerous rapids below.

Off-Leash Dogs

Supporters and opponents of a crossing noted that the riparian area, especially on the west side in the Rimrock area (also known as Good Dog, and which is a year-round off-leash area with access to the river), has already been heavily impacted by people and dogs, and that the increased turbidity of the water can negatively affect fish and other riparian wildlife. (Whether that impact and turbidity is attributable to dog and dog-owner use is disputed—see "Differences as to Fact," below.) They opined that this area has not been well managed by the Forest Service and that increased use could mean further degradation if there were no change in management strategy. Some who value the off-leash river access were concerned that more users would mean their year-round off-leash access would

be restricted or eliminated. They point out that Rimrock is one of only two places in or near Bend where people can legally take off-leash dogs to swim in the river in the summer (when many trails don't allow off-leash dogs and when access to water is important to many dog owners) and is the only such place that also allows for hiking.

Local vs. State/National Decision

Interviewees said because the Wild and Scenic designation is federal, and the Scenic Waterways designation was established (in part) with a statewide vote, local stakeholders should not be the only ones to weigh in on a crossing. Others felt strongly that local stakeholders should be the primary decision-makers.

Still others believe that the community as a whole wants to have a crossing, and that desire should outweigh the opposition of nearby property owners. Others remarked that the community doesn't have those kinds of conversations very well.

Neighborhood Impact

Some interviewees were concerned about the impact of a crossing on their neighborhoods, including increased traffic, crime, potential for fire, trespassing on private property, where people will park, and undesirable people who might be attracted by a trailhead or crossing. Some were concerned about conflict between trailhead users and residents. Others responded to these concerns by noting that "we all have to share" the beautiful parts of the city.

Some interviewees said it would be a "travesty" to ruin such a beautiful stretch of river with a bridge, while others pointed out that there were already many private property owners with homes built near the river and with private access to these areas. Interviewees said local people who have a trail or an area to themselves wouldn't like additional people, but it would be a good trade-off for getting more people active and outside. Some characterized opposition and support of a crossing as: those near the river don't want it, and those further away support it.

Social Equity and Environmental Justice

Some interviewees brought up environmental justice and social equity issues, with the lower-income (east) side of the river having less access to the river and to Deschutes National Forest trails. They noted that eastside trails off the river would not equate to the experience of the Deschutes National Forest river trails. This is in contrast to others who said a trail system on the east side could provide the same values.

Interviewees said there were 30-40,000 people on the east side without easy access to trails west of Bend, despite living quite close to them. Almost all the trail networks are on the west side, but more than 50% of the population lives east of the river. Interviewees also said the area immediately south of the City has no parks; if a crossing existed, the Forest Service land could serve as their park.

BARRIERS AND COMPLICATING FACTORS

This section details the complicating factors or barriers to addressing the concerns identified by stakeholders.

Trust

Many events and occurrences have increased distrust among both opponents and proponents of a river crossing. Many interviewees expressed dismay at the erosion of trust and wished it could be rebuilt.

Public Processes

Interviewees said there had been several public processes that have resulted in a recommendation of no bridge (this is in dispute—see “Differences as to Fact,” below). However, because in their view the District has not accepted those outcomes, they could not be trusted to accept another process that didn’t recommend a bridge.

Also, because the District has indicated that they could wait one year and build a bridge under the Scenic Waterways rules (this is in dispute—see “Differences as to Fact,” below), some interviewees felt that meant that they could not trust that the results of a collaborative process would be followed.

Some interviewees said that the CAC process was flawed because members were not told of the restrictions on bridges from the two overlays (federal Wild and Scenic and state Scenic Waterways).

Some interviewees said the UDAG process, run by OPRD, was supposed to only address whether the Upper Deschutes Scenic Waterway rules should be reopened. They say that despite the fact that the participants were told that they were not to discuss the bridge, they did end up discussing the bridge, which some saw as unfair. Also, while some say that this process recommended against a bridge (this is in dispute—see “Differences as to Fact,” below), others said it was not a representative or well-run process.

District Management

Some interviewees strongly distrust BPRD management. For them, the lack of trust is so strong that virtually every action of the Director is seen as malicious or at least ill-intentioned.

Wildlife

Some interviewees said they do not believe there is enough data to know whether a bridge in the area would be detrimental to wildlife; yet, in their perspective, BPRD personnel indicate that they know it would not be detrimental. They said this increased their distrust of BPRD and the District should not be so quick to opine about a subject on which they are not expert.

Resources

Some interviewees said they distrusted BPRD because they usually seem to have enough funds to do what they want. Similar distrust was cited toward some of the landowners near the bridge area because they were viewed as spending their funds on spreading misinformation and fear.

Legislative Efforts

Some interviewees saw the two legislative efforts as trying to prevent a collaborative process and public input, which increased their distrust of the bridge opponents. Other interviewees considered the two legislative efforts as valid public processes. Also, interviewees mentioned that the first legislative effort was launched during the UDAG process, which was trying to find common ground, and they felt blindsided at a time when “they were supposed to be open and honest with each other.”

Alternatives

Some interviewees indicated they didn't trust other stakeholders who proposed an eastside trail that would be the "equivalent" of the Deschutes National Forest trails. They said eastside trails would be a totally different experience: lava rock instead of ponderosa pines and away from the river instead of on the river. They said if the connection to Sunriver were past Lava Butte, there is less accessibility to the Deschutes National Forest and many would not be interested in that trail.

Eminent Domain

Several interviewees told the story of hearing second- or third-hand that a BPRD staff member threatened a landowner with eminent domain (condemnation), before BPRD decided the preferable site for a bridge was on public land. Others told of hearing first-hand a former BPRD staff member say that condemnation was a possibility or that BPRD was "prepared" to take land through that process. Still others told of an email that said BPRD would have "no problem using condemnation." Interviewees also said Don Horton, BPRD Executive Director, has said publicly that BPRD would never say that.

Elected and Appointed Officials

Interviewees said they knew of political candidates who were offered significant sums in campaign contributions for opposing the bridge, or of significant contributions given to other candidates because they supported the bridge. Others said there should be a change in the leadership of the BPRD if the bridge idea continued to be pushed. Still others said the BPRD Board tends to uncritically do what their Executive Director suggests, which decreased their trust of the Board.

Claiming Support

Some interviewees said their trust of BPRD eroded when the District claimed publicly that the interviewees' organizations supported the bridge. While they had supported the bond issue that included "pedestrian crossings connecting the east and west sides of the River Trail," they didn't understand at the time the full implications or the restrictions against a bridge in state and federal law. Some felt that the District should have been more forthcoming about those restrictions when they were first approached to support the bond election, and others said that BPRD should have checked with them before using their organization's name later in support of a bridge when they had more generally supported the bond issue.

Impacts

Interviewees said opponents' reasons for opposing the bridge were not honest because there was so much development and use in the area already that the bridge would not have a negative impact, even to wildlife. In addition, District funding could help mitigate even current impact from overuse in the Rimrock area.

Bridge Location

Interviewees said BPRD announced at a legislative hearing that the bridge location had been moved from private property to Forest Service land, and they felt BPRD had been disingenuous because they hadn't disclosed that change before the hearing. Others said the CAC had chosen the Forest Service site in 2015 as the preferred location, and the Board adopted that location during the discussion of the first legislative bill.

Differences as to Fact

In addition to the differences of opinion described above, there were multiple instances of disagreements about facts that might be clarified by a mutual exploration of the issues, learning, or fact-finding.

Level of Development

Some interviewees said the area in question is quite developed with houses and recreational trails, while others said the area is not all developed.

Previous Processes

Some interviewees said, “State Parks has said ‘no’ twice to a bridge,” while others said that never happened—that instead OPRD declined to open the rules to amendment. Some said the UDAG process resulted in consensus against a bridge, while others say there was no consensus on the bridge. While some said the UDAG process was designed only to ask how well the Scenic Waterways designation was working to protect the values for which it was made, others said it was about whether to build a bridge, and still others say its purpose was to come to consensus on a trail alignment.

Wild and Scenic Regulations

Some interviewees said there was “no mitigation allowed under the Wild and Scenic Rivers Act,” while other pointed out that the Wild and Scenic part of the Management Plan not only doesn’t prohibit a bridge, but it seems to encourage mitigation: “New bridges, transmission, gas or water lines will be discouraged. Where no reasonable alternative exists, adverse effects to scenic quality will be minimized by using existing rights-of-way and structures or burying lines (page 42).”

State Scenic Waterways Restrictions

Some interviewees said the Scenic Waterways regulations prohibit a bridge, and so there can be no bridge. Others said to allow a bridge would require a change in state law or regulations. Still others said no change would be needed, as there is a provision in the Scenic Waterways Act that allows a property owner to propose a change that is counter to the rules, be denied, and then after a period of a year (designed to allow the state to work with the property owner), the property owner can do as she pleases on her property. Still others said this latter provision applies only to persons, not to districts or other non-individual landowners. Still others said if that provision applies only to persons, the entire Act would probably apply only to persons.

While some characterized utilizing the one-year waiting period as failing to adhere to the rules, others pointed out that this provision was actually a part of the Act, and so abiding by this provision would not be acting counter to the rules or the Act.

Wildlife Presence

As noted above, some interviewees who have lived or recreated in the area for years disputed assertions by others (also including some who have lived or recreated in the area for years) that there is a significant amount of wildlife still in the area.

Conservation Easement

Some interviewees stated that the privately-owned Wildlife Sanctuary that is posted in the area is protected by a conservation easement (with some saying it was not adequate to truly protect the area). Others said there is no conservation easement, but county zoning protects it.

Impacts at Rimrock

Some interviewees said there were significant negative environmental impacts from dogs and people at the Rimrock area. Others said there was some impact on small section of bank because users are concentrated, but the dog impact is less than that from humans; and that fluctuating river flows cause more streambank erosion than dogs.

Lack of Data

Some interviewees emphasized the importance of doing a serious assessment of the wildlife utilization in the area, because there is no good recent assessment. Others emphasized that community data, such as the level of support of such a crossing, is also lacking.

Polarization

Interviewees noted that many people involved with this issue are “dug in” and have polarized views. Some named as a barrier certain individuals, on all sides of the issue, who were viewed as holding their views so strongly that they would be an impediment to any community solution that didn’t closely align with their own views. Both opponents and proponents of a bridge expressed the view that the other side’s positions were “narrow and self-centered.”

Capacity of Stakeholders

Some interviewees said BPRD has the capacity to address many issues at once, but the individuals and organizations that might be expected to participate in a collaborative process have less. They were concerned this might make it difficult to have real engagement, especially for a process that lasted as long as a year.

Laws and Regulations

Some interviewees listed the Wild and Scenic and Scenic Waterways designations as a barrier to addressing their concerns. They said finding an option to connect the River Trail that complies with the Management Plan and state rules, or a legislative change that would allow a bridge, would be difficult. Others said they viewed the fact that the state cannot enforce the Scenic Waterways rules as a barrier to addressing their concerns.

BPRD’s Experience with Restoration

Interviewees said the BPRD is not greatly skilled or experienced at addressing wildlife, habitat, and riparian restoration concerns. They noted that BPRD had just started with its own restoration projects (in conjunction with the Upper Deschutes Watershed Council [UDWC]) and so were unproven. Others said BPRD has experience in this area, and has restored more riverfront within the UGB than any other agency. They pointed out that BPRD has partnered with UDWC on riparian restoration since 2003.

POSSIBLE COMMON GROUND FROM INTERVIEWEES

When asked whether they felt there was common ground among all stakeholders, interviewees had some ideas, as listed below. (Some interviewees said their own views were potential common ground, but those are not listed here when others expressed strongly-held and opposite views.)

- Access, exposure, and the opportunity for people to be outside is important, at least in part so they continue to invest in those places and steward them.
- We want to protect the values that brought people here: the outdoors, wildlife, views, landscapes, and quality of life.
- The river is a special part of our community and we need to protect its health.

- The issue of managing recreation on public land while protecting that land is difficult, especially for a community that celebrates outdoor recreation, and is growing, like Bend.
- Trails along the river are special and provide a different experience from trails not along the river.
- It's a fine idea to have a trail that connects from Tumalo to Sunriver.
- We should examine alternative solutions.

POSSIBLE ALTERNATIVES FROM INTERVIEWEES

While interviewees were not asked for specific alternatives or solutions, some were offered. Some possible alternatives had to do with development of eastside trails.

- While some interviewees talked about the equity of connecting eastside residents with the Deschutes National Forest trails, others talked about the equity of building more trails on the east side.
- Interviewees said there is a "beautiful" eastside trail that connects Deschutes River Woods to Benham Falls Bridge through Lava Lands, and back through the Haul Road.
 - Others said this trail doesn't exist on the east side unless you walk on the railroad tracks. They also said while a trail on the east side could be built, it would be away from the river unless easements were obtained from the many homeowners on the east side whose property runs to the river's edge.
 - Interviewees also said a trail away from the river is not the same as, and is far less desirable than, access to the river trail.
 - Others said to build a trail through the lava would disrupt habitat.

Interviewees also had the following suggestions:

- There is a potential route for a trail starting on the west side, out to the new Visitor's Center, then south, crossing on Benham Falls existing bridge, then connecting via Lava Lands.
- No bridge is needed because trail connectivity already exists: people can cross the Bill Healy Bridge and travel along the Haul Road Trail, which leads to the Deschutes National Forest and ultimately to Sunriver.
 - Others said this was not a river trail and put trail users along a highway instead of in nature, which is much less desirable.
- Figure out if better management, sharing among different users (bikes, dogs, pedestrians), seasonality and hours restrictions, and restoration along the stream bank, especially at Rimrock, would help bring the elk back and meet the values that people have for the area, even with a bridge.
- BPRD could allocate funding for protection and restoration of the area impacted by any bridge, including Rimrock.
- A crossing might be acceptable where the canyon is so steep there are no homes there. Engineering would be difficult and the cost of a bridge there would be expensive, and there would still be issues with private lands.
- Move the bridge site inside the UGB, away from the Scenic Waterways reach, further downstream.
- Move the bridge site to Meadow Camp, on private property.
- Move the bridge site to Lava Island.
- Reduce the state Scenic Waterways reach to allow for the bridge, in order to make the rest of it rock solid. If it were reduced by half, that would be a big concession; if it were reduced by a quarter mile, it would not be such a big deal. (Note: this idea came from a bridge opponent.)

- Buy the right to build a trail at the existing pedestrian bridge downstream.

INTERVIEWEES' PERSPECTIVES ON A COLLABORATIVE PROCESS

Most interviewees were willing to consider and participate in a collaborative process on this issue. For some, it was a way to potentially find a creative solution for trail connectivity that everyone could agree to. For others, it would at least offer a path to increase mutual understanding and rebuild trust, even if a consensus did not emerge.

Interviewees offered many suggestions for what ground rules or approaches might be useful or not useful, and also had suggestions for who should be involved in any such process. Many of these suggestions have been incorporated in our recommendations. Please see Attachment D for interviewees' ideas.

Recommendations

This section contains our recommendations to address the central question of the assessment: whether and how a collaborative agreement-seeking process might help address ongoing concerns about the alignment and construction of a trail segment to connect the Deschutes River Trail on the south end of Bend.

Introduction

There is common ground among all interviewees: they all cherish the river, and they want to protect the river from environmental degradation. Many of those without easy access want to more fully experience the river in this reach, and those with access, particularly private access, are concerned that more users will denigrate their own experience, the ecosystem, or both. Recreational experiences along or near the river are clearly valued more highly than those away from the river.

Whether or not to build a bicycle and pedestrian bridge near the southern UGB of Bend—the narrow question that has embroiled many of the interviewees to date—is a manifestation of a broader issue facing the community: the tension between equitable recreational access and environmental protection in a growing area, especially with an overlay of private property rights. It is difficult to have a productive conversation solely about a particular bridge or river crossing in that context. To address this issue properly, the community would need to engage in a broader conversation: How do we want to manage this area that is valued by so many for so many different reasons?

Whether or not to engage in such a community conversation is discussed below.

Collaborative Opportunity

Almost all the interviewees were in favor of a collaborative process as a way to have a civil conversation about these issues. Even some who were pessimistic about the possibility of achieving agreement saw value in a process that might rebuild trust and relationships.

There is no guarantee that a collaborative process would result in consensus or even broad agreement on the question at hand. Many stakeholders have strong and polarized views and mutual levels of distrust are quite high. The challenges would be many should a collaborative process ensue. BPRD has several options at this point, including forgoing the project of building a connection for the Deschutes River Trail in this reach of the river.

That being said, we believe that a collaborative process, deliberately designed with certain elements described below, holds the potential of being of value to the District and the community, both to provide an opportunity for rebuilding trust and to explore whether agreement could be reached. Should the District and stakeholders decide to explore this possibility, we recommend a stepwise approach with an evaluation at the conclusion of each step to determine whether it makes sense to proceed to the next.

Step 1: Trust-Building Conversations

The trust issues raised in this report need to be directly addressed both in advance of and throughout any process, and indeed, should be addressed even if there is no process. Many

interviewees expressed distress at finding themselves at odds with other stakeholders on this issue and said they would like to repair those relationships.

As a first step, stakeholders would be invited to participate in one-on-one or very small group conversations with each other to begin the process of rebuilding trust. These voluntary conversations could be facilitated or mediated by a professional trained in helping people have difficult conversations.

Depending on the tone and outcome of these conversations, the process might proceed to the next step.

Step 2: Neutral Convenor

Due to high levels of distrust discussed above, we recommend that a neutral outside convenor or leader be engaged for the remaining steps, to prevent any impression that BPRD is attempting to control the process or the outcome. This should be a person or persons with credibility who is highly respected by stakeholders of all points of view. Perhaps a former elected official or another community leader, or a pair or small group of such individuals, could be found to fill the role. An alternative might be to form a diverse group of involved stakeholders who could collectively serve as convenor.

It would be helpful if a convenor were engaged at this point to assist with the subsequent steps. The convenor's role might include, among other tasks, potentially forming a small group of stakeholders to serve as an executive committee for the process, retaining a facilitator, working with the facilitator (and executive committee, if one is formed) to develop process design options, issuing invitations to those who would participate in the process, and chairing meetings as appropriate. (Note that this convenor role is separate from the idea of retaining a facilitator to help with process design and implementation.)

In our view, BPRD would serve both as a participant in any ensuing process (with a Board member potentially serving in that role), and as a resource to any group that is formed (at the staff level).

It is possible that the convenor for the Joint Fact-Finding step might be different from the convenor for the Community Collaboration step.

Step 3: Joint Fact-Finding

The large number of "disagreements as to fact" in this report speaks to the need to address and attempt to resolve those disagreements—or at least find a way to amicably agree to disagree on interpretation of facts. Here we are recommending this as a stand-alone preliminary step. There would likely be additional joint learning that takes place as part of the educational phase if a full-fledged collaborative process moves forward from here.

Joint fact-finding typically involves all sides of a conflict working together with experts to address factual disputes. Key elements are that

- Experts, decision makers, and key stakeholders from all sides of an issue work together.
- Information and resources are shared.

- The result is a single text embodying the sum of the joint efforts.⁸

When this step is completed, a decision would be made, based on how parties worked together and the outcomes, whether to proceed to the next step—or to an unforeseen interim step if that is indicated.

Step 4: Community Collaborative

If it is decided that a community collaborative should be convened, we recommend the following elements be adopted.

Convenor

A convenor should be selected, or the convenor that has been serving re-confirmed, for this step.

Facilitator

Retaining a trusted third-party facilitator, as the BPRD Board has indicated is their intention, will help to both increase trust in the process and ensure the process has integrity.

Process Development

Before any collaborative process begins, the convenor, facilitator, and a small group of key stakeholders should develop a proposed process to vet with potential participants. Elements of this proposed process could include those listed in this section of the report (scope, participants, funding, etc.), and perhaps more. During the vetting process, the process managers should be open to changing their draft plan to accommodate good ideas from potential participants.

Scope

The scope of the collaborative should be broader than just a bridge. It might include, for example, how to provide access, connectivity, and eastside recreational opportunities while protecting the natural resources the community loves.

This will not only address a community need; in addition, the broader scope will allow for more opportunities for tradeoffs and outcomes that could meet diverse needs of different stakeholders.

The actual scope should be developed with the convenor, the facilitator, and other key stakeholders (including BPRD) and should be thoroughly vetted with all participants early in the process or before it begins. We anticipate this could take a substantial amount of time and energy, and that the time invested here would provide a significant return as the process ensues.

Funding

There could be value in having multiple entities fund the process both to share the expense and to ensure there are no perceptions that one entity is controlling the process.

Stakeholders to be Involved

This collaborative process should include many or all of the individuals, agencies, and organizations that have been involved in the issue to date, including, as noted above, a BPRD Board member. Without listing all these, we point out a few categories that might otherwise be missed.

⁸ See <https://www.beyondintractability.org/essay/joint-fact-finding> for more information.

Representatives from all neighborhoods and neighboring landowners with the potential to be impacted should be included. These should include many neighborhoods along the river, even those that previously have not been engaged, to avoid the potential problem of engaging them later after norms and relationships have been developed.

Organizations and individuals that represent populations that are traditionally underserved with recreational opportunities should also be invited to participate.

Also invited should be trail users and other stakeholders who do not live near the crossing site, and even some outside the District boundaries. Just as some interviewees pointed out that federal Wild and Scenic and state Scenic Waterways designations are not solely local issues, but rather of statewide or nationwide scope, so too relying only on the opinions of those near the crossing site would be incomplete, especially if the scope were broader. Even if the scope is narrow, the process should include participants who live away from the crossing site who believe they have a stake in the outcome.

In addition, representatives of governmental agencies, some of whom might be unable to participate at the consensus-building table, should be requested to serve as a resource to the group. These might include agencies such as the Deschutes National Forest, Oregon Department of Fish and Wildlife, U.S. Fish and Wildlife Service, Oregon Parks and Recreation Department, BPRD, and various local government transportation planners. Some of these might choose to attend every meeting, while others could be called in to help the group address specific issues.

Board Action

The District Board should be clear about what it will do with the results of any process. Specifically, they should consider under what circumstances they could accept no new bridge as an outcome, and be open about that with potential participants.

As a trust-building step, the Board should consider pledging to not initiate any bridge-building projects for the duration of the process.

Transparency

Throughout the collaboration, the process managers should ensure the strictest rules for transparency and integrity to enhance trust.

Allow Enough Time

Everyone involved should be willing to allow enough time for trust to be (re)built and for participants to develop relationships. Only when that happens will people be able to be creative and honestly consider alternatives that are not their own.

Participants should assume that this process would last, at a minimum, a year, in order to rebuild trust, address the differences as to fact, identify values and criteria for success, generate alternatives, evaluate alternatives, and then choose among alternatives.

Consensus

The full group should discuss and decide on a definition of consensus at the outset of the process. Consensus can be defined in many different ways; one of the most common is that everyone's point of view has been heard and understood, and everyone can live with the proposal. The advantage of

adopting a consensus decision-making rule is that it would be clear that any outcome would be acceptable to all parties at the table, and it gives parties an incentive to not just reject proposals but rather to work to find ways that a proposal could be made acceptable to everyone.

If the BPRD board can commit to implementing a consensus proposal (flowing from a consensus-based process in which they have fully participated), this would offer an incentive for individuals to find a way to achieve consensus as opposed to relying on the relative uncertainty of a legislative or litigated solution. This idea, as well as other details such as the definition of consensus, could be vetted as part of the detailed process proposal.

Summary

A well-designed and skillfully led community collaboration with participants fully participating in good faith could help rebuild trust among stakeholders, and might find a way to balance environmental protection, social equity, and recreational access. Should this be determined to be an appealing option, whether a collaboration is truly indicated should be carefully considered with a series of pre-collaboration steps to determine feasibility and potential.

Attachment A: BPRD Board of Directors Resolution

BPRD RESOLUTION NO. 409

A RESOLUTION OF THE BEND METRO PARK AND RECREATION DISTRICT BOARD OF DIRECTORS

ADOPTING PROCEDURES FOR A COMMUNITY PROCESS TO DETERMINE BEST ROUTE AND METHOD TO CONNECT THE DESCHUTES RIVER TRAIL ALONG BEND'S SOUTHERN BOUNDARY

Whereas, Bend Metro Park and Recreation District (the "District") has a responsibility to plan for connectivity of the Deschutes River Trail, equitable access to outdoor recreation and education opportunities throughout the District, and fully account for impacts to fish and wildlife habitat in the process; and,

Whereas, since the conclusion of the 2017 State legislative Session, the District has taken no action to pursue a bicycle and pedestrian bridge across the Deschutes River at or near Bend's southern boundary,

Whereas, in the District's 2017 comprehensive plan needs analysis, trails were the top ranked need among Bend residents; and,

Whereas, a bicycle and pedestrian bridge at or near Bend's southern boundary is included in local transportation system plans, recommended in the Deschutes National Forests Alternative Transportation Feasibility Study (2015), is identified in the District's system-wide trails plan, and is one of several projects specifically called for in Measure 9-86 (2012); and,

Whereas, trails offer healthy recreation and transportation options to communities, allowing people of all ages to walk and bike to key destinations, engage with community and connect with nature; and,

Whereas, the District believes the best way to build the next generation of conservation supporters involves opportunities for them to enjoy the outdoors in an environmentally sound manner; and,

Whereas, the District is the park and recreation provider for the City of Bend and manages 49 percent of the riverfront within the District boundaries; and,

Whereas, the District has a history of rehabilitating riverfront habitat along the banks of the Deschutes River on properties owned by the District and is committed to continuing and improving upon past work with community partners to rehabilitate and manage riverfront habitat; and,

Whereas, the District recognizes that there have been past processes, including an Oregon Park and Recreation Department (OPRD) process about whether to alter scenic waterway rules and a District process to select a desired trail alignment for a possible bridge, and that neither process fully considered conservation goals within the reach of the river where a potential bridge may be located; and,

Whereas, the District proposes to participate in a broad community process to develop and build community support for a preferred trail alignment connecting the Deschutes River Trail along the Deschutes River;

Whereas, the preferred trail alignment should offer net benefits to nearby fish and wildlife habitat; and,

Whereas, the District has a responsibility to ensure that habitat impacts of recreation are minimized to the greatest degree possible. Wherever possible, investments in outdoor recreation and education are accompanied by conservation investments and seek to provide habitat improvements.

NOW THEREFORE, the Board of Directors of the Bend Park and Recreation District does hereby resolve as follows:

1. The District supports a process to consider connection of the Deschutes River Trail, conducted by a neutral, third-party facilitator with demonstrated expertise and success facilitating natural resources, recreation and community issues.
2. The fundamental question that the process would seek to address is: "How should the community provide for trail connectivity in this reach of the Upper Deschutes River to provide for human needs while seeking to provide a benefit to fish and wildlife habitat?"
3. The District understands that a community process may not lead to a bridge across the Deschutes River at or near the location in question. Conversely, the District would hope that other participants accept the possibility that a bridge, if properly designed and conditioned upon achieving certain conservation outcomes, may stand out as the preferred alternative.
4. The District supports a data-driven process informed by the most current assessments of the impacts of recreation activities, trails and bridges on river ecosystems and wildlife habitat within the area in question, as well as the growth and development projections for the Bend metropolitan region. The process should include an assessment and evaluation of past, present and desired future conditions in order to identify the most appropriate ecological outcomes.
5. The process will fully consider conservation measures, including both rehabilitation and operational, that would seek to provide a benefit to fish and wildlife habitat while providing for trail connectivity in partnership with the USFS and conservation groups.
6. The District supports a community process where participants would include a group of representatives from different stakeholder groups (to be vetted by the facilitator) including:
 - Community and neighborhood interests
 - Recreation interests
 - Conservation and environmental interests
 - Relevant local, state and federal agencies including the United States Forest Service, Oregon Department of Fish & Wildlife, Oregon Parks and Recreation Department, City of Bend, Deschutes County and Bend Park and Recreation District.
7. The District resolves to honor any broadly-supported outcomes that aim to complete the Deschutes River Trail and asks other participants to do the same.
8. District will not pursue any other avenues to plan, develop or construct a bridge within the Upper Deschutes River, or support such activities by others, while this process is underway and until it has concluded.
9. District supports a timely initiation of these procedures. District's goal is that such a process would not only resolve a very complex local matter in the context of a specific State Scenic Waterway, but participants in the collaborative process would gain a better understanding of how to address concerns over recreation projects on Scenic Waterways statewide. We ask the State Legislature to take into consideration the potential for collaborative problem solving among local conservation, environmental, recreation and community interests.

ADOPTED by the Board of Directors on this 20th day of February 2018.

/s/ Nathan Hovekamp, Board Chair

Attest:

/s/ Don P. Horton, Executive Director

Attachment B: Interview Questions

Oregon Consensus/BPRD Southern Connection Project Issues Assessment Interview Protocol

Note: These questions were used as a starting point of the interview. Other questions may have been posed if they flowed from the conversation.

INTRODUCE MARY ORTON AND THE PROCESS

- I am a mediator with a practice in public policy issues and disputes. Been doing this work all over the country for about 20 years. I live just outside Bend.
- As you may recall from the email, I work with the Oregon Consensus program as an affiliated practitioner. Oregon Consensus is Oregon's legislatively established program for public policy consensus building and conflict resolution - providing assessment, facilitation, mediation and other services to communities, public entities, and their stakeholders on complex public policy issues - like this one!
- I was retained by Oregon Consensus to talk with stakeholders regarding the issue of a southern connection for the Deschutes River Trail, in order to determine whether a collaborative, consensus-based process might be feasible and productive.
 - From the District Board resolution: "The fundamental question that the process would seek to address is: 'How should the community provide for trail connectivity in this reach of the Upper Deschutes River to provide for human needs while seeking to provide a benefit to fish and wildlife habitat?'"
- I will make a written report from these interviews. This report will include all the major points that I hear during the interviews. It will also include my analysis and recommendation about whether a collaborative process should be undertaken, and if so, how.
- While the report will include a list of everyone I interview, none of your comments will be attributed to you by name. Also, if you ask me to keep something private, I will not mention it at all in the report or to anyone.
- You will have a chance to review the draft report before it is finalized.
- My code of ethics requires that I disclose potential conflicts of interest. For two years ending in 1999 (almost 20 years ago), I was Southwest Regional Director of American Rivers, a national conservation organization. Since then, I have had a mediation practice as a third-party neutral, primarily in the public policy and natural resources arena. I do not believe my background would impair my ability to be impartial. If you have any concerns, please let me know. You can also alert Turner Odell of your concerns, if you prefer: he is senior project manager with Oregon Consensus and is OC's primary contact for this project.

INTERVIEW

1. Please tell me about you: your background (and your organization, if any).
2. How have you been involved to date with the southern connection for the Deschutes River Trail?
 - a. (If not already answered:) What are your connections, concerns, and interests?
3. What are the barriers or obstacles to addressing your concerns?
4. Where do you think there is common ground? What do you think are the things everyone could agree on?

5. If there were no collaborative, inclusive process to address these issues, what would you do?
 - a. What would be your best-case outcome?
 - b. What would be your worst-case outcome?
6. If there were a collaborative process regarding a southern connection for the Deschutes River Trail:
 - a. What do you think could be accomplished?
 - b. (Would you continue with your current efforts, do you think?)
 - c. Who should be involved?
 - d. Would you want to be involved?
 - e. What approach or ground rules would be useful? Not useful?
7. Who else should I interview on this topic? (Please note, while I cannot commit to interview everyone you suggest, I will interview as many as I can.) People invited to an interview to date:

Neighbors

Eastside River Rim: Larry Waters

Westside Bachelor View: Bob Brell

Westside Bachelor View: Tim Phillips

Westside Sunrise Village: Cynthia Eckoff

Agencies

Bend Park and Recreation District Board: Ellen Grover

City of Bend: Sally Russell

Confederated Tribes of Warm Springs: Bobby Brunoe

Deschutes County transportation planner: Peter Russell

Metropolitan Planning Organization: Tyler Deke

Oregon Department of Fish and Wildlife: Corey Heath

Oregon Parks and Recreation Department: Chris Havel

US Forest Service: Kevin Larkin

Environmental and Recreation Organizations

Bend Paddle Trail Alliance: Jayson Bowerman

Central Oregon Landwatch: Paul Dewey

Central Oregon Trails Alliance: Woody Keen

DogPAC: Val Gerard

Oregon Wild: Erik Fernandez

Trout Unlimited: Shaun Pigott

Upper Deschutes Watershed Council: Ryan Houston

8. Is there anything else I should know?
9. Do you have any questions?

Attachment C: Interviewees

INTERVIEWED

Jim Baker, DogPAC
Jayson Bowerman, Bend Paddle Trail Alliance
Bob Brell, westside neighborhood (Bachelor View), and former Century West Neighborhood Association Chair
Greg Bryant, Deschutes River Woods Neighborhood Association
Brad Chalfant, Deschutes Trails Coalition*
Jim Clinton, eastside neighborhood
Judy Clinton, eastside neighborhood
Tyler Deke, Metropolitan Planning Organization
Cynthia Eckoff, westside neighborhood (Sunrise Village HOA)
Erik Fernandez, Oregon Wild
Val Gerard, DogPAC
Ellen Grover, BPRD Board Member
Chris Havel, Oregon Parks and Recreation Department
Louise Hawker, eastside neighborhood
Corey Heath, Oregon Department of Fish and Wildlife
Don Horton, Bend Park and Recreation District
Ryan Houston, Upper Deschutes Watershed Council (now working for Oregon Natural Desert Association)
Woody Keen, Central Oregon Trail Alliance
Kevin Larkin, Deschutes National Forest, US Forest Service
Tim Phillips, westside neighborhood (Bachelor View)
Shaun Pigott, Trout Unlimited
Mike Riley, The Environmental Center
Nikki Roemmer, Oregon League of Conservation Voters
Peter Russell, Deschutes County transportation planner
Sally Russell, City of Bend
Karen Swirsky, City of Bend transportation planner
Stosh Thompson, westside neighborhood (Bachelor View) and Director of the Thompson Wildlife Sanctuary
Bridget Tinsley, Oregon Parks and Recreation Department
Larry Waters, River Rim Homeowners Association

* Brad Chalfant's comments reflected his personal observations, as the Deschutes Trails Coalition has neither reviewed nor taken a position on the project.

DECLINED TO BE INTERVIEWED

Bobby Brunoe, Confederated Tribes of Warm Springs
Paul Dewey, Central Oregon LandWatch
Bridget Moran, US Fish and Wildlife Service
Bill Moseley, City of Bend
Gail Snyder, Coalition for the Deschutes
Southwest Bend Neighborhood Association

Attachment D: Process Ideas from Interviewees

Approach Ideas from Interviewees

Interviewees had the following suggestions when asked what ground rules or approaches might be useful or not useful.

Convenor and Funding Ideas from Interviewees

- An entity other than the District should be in charge of collaborative process.
- Financial support for a collaborative process should come from outside the BPRD.

Participant Ideas from Interviewees

- The group needs to be carefully constructed with balanced interests.
- BPRD should be equal to every other member of the group.

Process Ideas from Interviewees

- Make sure the process has integrity and there is transparency.
- Figure out what everyone can agree to.
- If a consultant is retained, ensure that person is not promoting her own agenda.
- BPRD has to be open to a “no bridge” answer, and say if that is the result of the process, they will stop pursuing a bridge.
- Provide clarity on how the BPRD Board will respond to what comes out of the process.
- Have the group elucidate their values and a vision for the future. Give everyone a chance to hear everyone’s positions and interests.
- The group could define some alternatives for trail connectivity and identify what information was needed to evaluate those alternatives. The BPRD could then pay for assessments or studies if information were not available.
- Develop wide support for a trail that connects east and west or both to Lava Lands and Sunriver, and then hand off that project to the Forest Service, BPRD, and OPRD to coordinate agencies to work on it.

Decision Making Ideas from Interviewees

- While private property concerns should be a consideration, they should not be a controlling consideration.
- Resource considerations at the proposed location have to be weighed. All data should be evaluated to determine the best options for a connection point.
- Clearly define how decision-making will occur.
- Give participants adequate time to make decisions.

Logistics Ideas from Interviewees

- Record meetings and make videos available online.

Scope Ideas from Interviewees

- Give clear scope and context to the group.
- Make sure the scope is broader than just a bridge: make it about connectivity.
- Create a master plan from Meadow Camp or Widgi Creek to the Central Oregon Irrigation District diversion, or the Upper Deschutes Wild and Scenic river corridor, that acknowledges the

reality of the many people using the trails and river, the new Pahlisch development, River Rim Park, and Rimrock, and addresses how to manage transportation and recreation in the corridor. Address all the restrictions, habitat needs, recreation desires, and mandates of the various land management agencies.

- The scope should include a broad look at trails:
 - Part of the District's comprehensive plan is to expand non-river trail opportunities. The group should look at its job in the context of larger trail build-out in the District.
 - Broaden the discussion to address how far to go on development of all these trails.
 - The conversation should be about a more expansive, inclusive, and inviting trail system, not solely a bridge.
- Address growth head-on: congestion in recreation areas is happening everywhere in the state and will continue. Have an honest community conversation about growth and how to manage it without sacrificing resources, while getting what we need.
- Clearly define terms from the BRPD Board resolution if that is still in play; e.g., "broadly supported." Should it "seek to benefit" or should it benefit?
- Address unregulated travel (people going off trail).
- Address social equity issues for underserved low-income people and increased access to public areas.
- Recognize the need and create the urgency to actually manage these areas that have been lost to development. There needs to be more management and much better management.

Outreach Ideas from Interviewees

- Engage the entire district population, including some kind of polling or survey.
- Allow for public comment and input with broad public outreach.

Ground Rules and Operating Procedures Ideas from Interviewees

- There should be clear ground rules and operating procedures developed by the group.
- No one should work outside the collaborative process to get what she wants (legislature, litigation, public relations, ballot initiative, etc.).
- No surprises if you plan to go outside the collaborative.
- Participants should be required to attend and cannot just show up for the decision-making meeting.
- Participants will need to explain why they have the positions they have.
- Define consensus as "I can live with the proposal."
- Participants should work for the benefit of the community.
- Participants should treat others with respect.
- Participants should say what they believe is true.
- Participants should make a commitment to understand issues and respect others' points of view.
- Participants should be open to various solutions.

Education Ideas from Interviewees

- Make sure the discussions are fact-based.
- Allow time for mutual education and information sharing on the part of all stakeholders.
- Have reliable data that shows impacts of alternatives on environment, wildlife, or ecosystem.
- Make sure people understand the rules for the Scenic Waterways and Wild and Scenic designations on the Upper Deschutes.

- Participants need to know:
 - What is impact from bridge building?
 - What would it cost?
 - How many people would use it?
 - What wildlife in what numbers are in the area and would be negatively impacted?
 - What is the usage and impact of dogs and dog owners at Rimrock?
 - What is the big picture of trails in the District?

Relationships Ideas from Interviewees

- Give the people at the table the opportunity to get to know each other, build relationships, and rebuild trust.

Ideas for Participants from Interviewees

In answer to a question about who should be involved, all of the following persons, entities or groups were mentioned at some point by one or more interviewees.

Governmental Agencies

All signers of the original Management Plan (see pages 4 and 5 of the Management Plan)

Bend Metropolitan Planning Organization

Bend Park and Recreation District: Executive Director Don Horton and all Board Members

City of Bend (elected and appointed officials)

City of Bend climate action staff

Deschutes County (elected and appointed officials)

Deschutes National Forest (U.S. Forest Service)

Oregon Department of Fish and Wildlife

Oregon Department of Land Conservation and Development

Oregon Department of State Lands

Oregon Department of Transportation

Oregon Parks and Recreation Department

U.S. Fish and Wildlife Service

Neighbors and Neighborhood Organizations

Bachelor View neighborhood

Brookwood area residents

Citizens Advisory Committee members from 2014

Jim Clinton, eastside resident

Deschutes River Woods Homeowners Association (HOA)

Eastside residents who want to see a connection

Landowners

Neighborhood Leadership Alliance

Neighbors to all prior proposed bridge sites

Tim Phillips, Bachelor View neighborhood

River Canyon Estates HOA

River Rim HOA

Southeast Neighborhood Association

Southwest Neighborhood Association

Stosh Thompson, Bachelor View neighborhood

Sunrise Village HOA

Organizations and Non-Profits

American Rivers
Audubon Society
Bend Bikes
Bend Endurance Academy
Bend Paddle Trail Alliance
Central Oregon Land Watch
Central Oregon Trails Alliance
Central Oregon Visitors Association
Coalition for the Deschutes
Commute Options
Deschutes Land Trust
Deschutes Trails Alliance
Deschutes River Coalition
Deschutes River Conservancy
DogPAC
The Environmental Center
Great Old Broads for Wilderness
Oregon Wild
Oregon League of Conservation Voters
Trout Unlimited
Upper Deschutes Watershed Council
Visit Bend
WaterWatch of Oregon

Businesses

Commercial connections to the trails
LOGE Camps (the former Entrada Lodge)
Pahlisch Homes
Sun Country Tours

Others

Basin Study Work Group participants (Central Oregon irrigation districts, cities, environmental organizations, and others)
The broader community
Environmental community (local and statewide)
Environmental experts
Local and statewide legislators
Low-income advocates
Organizations that work with at-risk youth (e.g., Boys and Girls Clubs)
Pedestrian advocacy organizations
People who have been involved in collaborative processes who have seen them work well
Recreation advocates
Schools
Social service organizations that serve underserved communities
Someone involved in non-motorized transportation planning for the region
Someone who can explain how the laws work

Taxpayers

Trails advocates

Users and user groups of all kinds: hikers, runners, bikers, etc.

Wildlife biologists

BMPRD RESOLUTION NO. 419
A RESOLUTION OF THE BEND METRO PARK AND RECREATION DISTRICT BOARD OF DIRECTORS
PROVIDING DIRECTION RESULTANT TO THE OREGON CONSENSUS REPORT ON SOUTH UGB
DESCHUTES RIVER CONNECTION

WHEREAS, the Bend Park and Recreation District has been working on expanding the Deschutes River Trail to the South into the US Forest Service Deschutes National Forest, and;

WHEREAS, Bend is a fast-growing urban area surrounded by public lands; and

WHEREAS, the south UGB bridge has been a community goal for more than 20 years as demonstrated in the City of Bend Transportation System Plan and Urban Trails Plan, subsequent in BPRD trail plans and most recently in the 2015 Deschutes National Forest Alternate Transportation Plan, and;

WHEREAS, in the District's 2018 Comprehensive Plan needs analysis and previous plans, trails were among the top ranked community need, and;

WHEREAS, the voters of the District voted in favor of making a southern connection as a part of the 2012 voter-approved Bond Measure, and;

WHEREAS, after being part of a voter-approved bond, it has been the subject of several public processes with diverse purposes and outcomes, as well as two unsuccessful legislative attempts to prohibit a bridge, and;

WHEREAS, the Bend Metro Park and Recreation District Board of Directors adopted Resolution 409 adopting procedures for a community process to determine the best route and method to connect the Deschutes River Trail along the urban growth boundary/US Forest Service interface, and;

WHEREAS, Oregon Consensus, a third-party facilitator established by the Oregon Legislature, was retained to help determine whether conditions are ripe for collaboration and if so, how the process should be designed for the greatest likelihood of success, and;

WHEREAS, the Oregon Consensus report found that the concerns of stakeholders are complex and include wildlife, the ecosystem, social equity, access, neighborhood impacts, private property rights, and erosion of environmental protections.

WHEREAS, based on the report's finding, the Board of Directors for Bend Metro Park and Recreation District believe that focusing efforts to expand opportunities and trail connections throughout Bend among other strategies will help build a shared community vision for our trail system.

NOW, THEREFORE, let it be known that the Bend Park and Recreation Board of Directors directs staff to do the following:

- Postpone the southern Deschutes River Trail connection project until such time that the District, other agencies and the broad community share a vision on how to proceed; and,

- Focus efforts on existing Deschutes River Trail riparian areas in partnership with the Upper Deschutes Watershed Council to identify and implement practical stream bank management practices; and,
- Focus District trail planning efforts to expand options and improve trail connectivity and user experiences throughout Bend; and,
- Engage in discussions with local, state and federal agencies about how to meet communitywide recreation and transportation and recreational trail needs as Bend's population grows; and,
- Communicate the District's long term trail planning strategies in order for trail users to better understand future trail opportunities and anticipated user experiences throughout the greater Bend area; and,
- Remove south UGB bridge project from the 2019 five-year Capital Improvement Plan and 10 year System Development Charge project list to show in good faith that the District will not pursue this project until/unless a collaborative community process occurs.



Brady Fuller, Board Chair

Attest:



Don P. Horton, Executive Director

July 2, 2024

◆ ◆ ◆ ◆ ◆ ◆ ◆ ◆ ◆ ◆ ◆ ◆ ◆ ◆

<https://www.bendparksandrec.org/about/board-meeting-videos/>

Director Schoen made a motion to nominate Donna Owens to serve as vice chair of the Bend Park & Recreation District Board of Directors for Fiscal Year 2024-2025. Director Schneider seconded. The motion was approved unanimously, 4-0.

2. Appoint Board Secretary

Director Owens made a motion to appoint Michelle Healy, executive director, to serve as executive secretary of the Bend Park and Recreation District Board of Directors for fiscal year 2024-25. Director Schoen seconded. The motion was approved unanimously, 4-0.

3. Appoint Budget Officer

Director Schneider made a motion to appoint Kristin Toney, director of administrative services, to serve as budget officer of the Bend Park and Recreation District Board of Directors for fiscal year 2024-25. Director Owens seconded. The motion was approved unanimously, 4-0.

4. Appoint Legislative Liaison

Director Schoen made a motion to appoint Nathan Hovekamp, to serve as legislative liaison for the Bend Park and Recreation Board of Directors for fiscal year 2024-25. Director Owens seconded. The motion was approved unanimously, 4-0.

5. Approve board meeting dates and time

Director Owens made a motion to conduct the Bend Park and Recreation District Board of Directors public meetings on the first and third Tuesdays beginning a 5:30 pm with a work session at 5:30 p.m., unless otherwise noticed, and a business session following the work session. Director Schoen seconded. The motion was approved unanimously, 4-0.

6. North Unit Canal Trail – Phase 1 Property Acquisition – Henry Stroud

Mr. Stroud said the North Unit Canal Trail is a high priority project in the Comprehensive Plan. He said the North Unit Canal trail is in NE Bend and runs along the canal. He showed a map of the area and explained the current trail and the intended trail expansion. He said there is a long history of established use of the trail and the trail counters show high usage with more use anticipated based on the building of surrounding neighborhoods in the area.

He spoke about the history of the trail as a longtime district goal. He pointed out that staff has reached out to the public as recently as 2022, design and engineering work began in 2022 and developed to 60%, and now staff is working on the right of way acquisition that began in 2023.

He explained the easement acquisitions, describing the surrounding properties as remnant properties with multiple potential interest holders, he said there are no structures in the easement area and the land is not buildable. He explained the easements needed and the widths in specific areas. He said the resolution before the board contains the following:

- Legal descriptions
- Declares public need for the easements
- Authorizes the executive director to direct district staff and agents to pursue acquisitions
- Authorizes condemnation if mutual agreement cannot be reached (to only be used as a last resort)

The board asked about the condemnation process. Mr. Stroud said an offer is made to the land owners based on the property's appraisal value and need of the easement. The district is obligated to negotiate for up to 40 days before condemnation is allowed, if needed. He said the district has to offer fair market value, but the owners can get their own appraisals and negotiate with the district even in condemnation.

Director Schoen made a motion to adopt resolution number 2024-08 and authorize the Executive Director to take steps necessary to implement the resolution. Director Schneider seconded. The motion was approved unanimously, 4-0.

7. Approve MOU with Bend Pickleball Club – *Matt Mercer*

Mr. Mercer said this is an extension of previous board discussions. He explained that the Pickleball club would like to further expand courts at Pine Nursery. He said this allows for more court use by the club to serve club members. He added the courts also benefit the community when not in use by the Pickleball Club. He said the cost of the project is about \$800,000, the Pickleball Club would fund raise \$400,000 in funds and the other half will be provided by the district. The reason for the MOU is to handle the refund of fundraised monies to the Pickleball Club should they fall short of the goal and elect to not move forward with building the additional courts.

The board asked questions about the hours of use of the courts by the club and tournament play and maintenance. Mr. Mercer said the hours of use by the club are capped and some tournament play does allow for all courts to be used by the club. He added that the Pickleball Club clean the courts and do day to day maintenance, the district has resurfacing in the asset management plan every eight years and there is a provision in the agreement with the club to fund a higher level of maintenance to the courts if needed.

Director Schneider made a motion to authorize the executive director to enter a Memorandum of Understanding with Bend Pickleball Club and Bend Park and Recreation Foundation for the development of 8 additional pickleball courts as a part of the Pine Nursery Phase 5 Project under the general conditions outlined in the attached draft MOU and pending final legal and Park and Recreation Foundation review. Director Schoen seconded. The motion was approved unanimously, 4-0.

8. Approve Amendment to Professional Services Contract for McKay, Miller's Landing and Columbia Parks River Access Project – *Ian Isaacson*

Mr. Isaacson described the project as a phased approach with this as the final phase. He said this project only covers Miller's Landing because the overall project has been broken up into four phases in the 2025-2029 CIP that began yesterday and reviewed each project and timeline.

Mr. Isaacson explained the proposed Amendment #5 to the Environmental Science Associates (ESA) professional services contract covers the final phase of design for the improvements at Miller's Landing Park. ESA will provide professional services through final design development, city of Bend permitting, and bidding for river access improvements at Miller's Landing. work is scheduled to begin this month.

Director Schoen made a motion to authorize the executive director to negotiate and execute amendment #5 to the contract with Environmental Science Associates for the McKay, Miller's Landing and Columbia Parks River Access Project in an amount not to exceed \$65,000 and to approve an additional contingency amount of \$6,500, for a revised total design budget not to exceed \$486,666. Director Owens seconded. The motion was approved unanimously, 4-0.

EXECUTIVE DIRECTORS REPORT

- Executive Director Healy announced that the finance team has been awarded a certificate of achievement and financial excellence award by GFOA.
- She said the goose round up has not happened since 2020, this year staff helped to relocate 54 juvenile geese to Summer Lake, reporting that the operation went smooth.
- She reminded the board to attend the July fourth Pet Parade and invited them to hand out popsicles
- The city approved the tree code to begin Aug. 16. She provided a handout to the board that is attached to the minutes.
- She updated the board on the Rose Property, and said staff has applied to change the surface mine zoning to rural residential zoning that will allow for park development.
- She said the HR Manager needs two volunteers for the policy review committee: Directors Schneider and Schoen both volunteered.

BOARD MEETINGS CALENDAR REVIEW

GOOD OF THE ORDER

- Director Schneider recognized Michelle Healy in her new role of Executive Director.
- Director Schoen said she attended the foundation meeting, and Eric Baird attended to make sure the foundation board was comfortable with the formatting of the financial statement. She also attended the Makers Market at Hollinshead and commented that it is a well-loved facility and park.
- Director Owens welcomed Michelle Healy as the new executive director and shared her appreciation for all that the staff and volunteers do this time of year. She said she recently reviewed the Playbook and commented that district does a lot for the community.
- Director Barram mentioned that she is excited to attend the July 4th Pet Parade. She said she participated in a meeting with the city staff and the district is planning a joint meeting with the city in October or November. She added that the city is considering tax exemption items again for ADUs and middle-income housing that may come before the board in September. She mentioned the city's coalition against hate, the BPRD comp plan and conversations on credits and working hard to further conversations and relationships with the city. She mentioned the recent Supreme Court decision on camping and commented that the decision doesn't change anything the district is doing on that topic. Michelle added that they discussed recreational immunity.

ADJOURN: 6:38 pm

♦ ♦ ♦ ♦ ♦ ♦ ♦ ♦ ♦ ♦ ♦ ♦

Prepared by,
Sheila Reed
Assistant to the Executive Director

Jodie Barram, Chair

Donna Owens, Vice-Chair

Deb Schoen

Cary Schneider

Nathan Hovekamp

BOARD AGENDA COMMUNICATION

AGENDA DATE:	July 16, 2024
SUBJECT:	Approve Hollinshead Park Updated Preferred Concept Plan
STAFF RESOURCE:	Ian Isaacson, Landscape Architect
PREVIOUS BOARD ACTION:	December 12, 2023, Award Professional Services Contract for the Hollinshead Park Improvement Project
ACTION PROPOSED:	Approve Initial Design Plans
STRATEGIC PLAN:	
Pillar:	Operations & Management Practices
Outcome:	A balance between caring for existing infrastructure and new development
Strategy:	Ensure the district is maintaining its adopted level of service targets

BACKGROUND

Hollinshead Park is a 16.1-acre community park in northeast Bend. Donated by Dean and Lily Hollinshead, it has deep roots in the area. Originally a bustling ranch, it retains a reminder of its pioneer heritage, offering visitors a journey back in time. Spread across the park are unique features: an off-leash dog area, gardens for the community and demonstrations, a walking trail and picnic areas. The park is also home to historical buildings, notably the Hollinshead Barn and the Sharecroppers House, which has been transformed into a museum.

The district's 2018 Comprehensive Plan, which is the district's guiding plan for the next ten years, identifies an improvement project at Hollinshead Park. This project is included in the district's 2025-29 Capital Improvement Plan (CIP) for implementation.

In 2010 the district developed a preferred concept plan for the park. This was not just a plan for the park's future, but an effort to honor its past while making it more functional and accessible as the community grows. Based on guidance from the 2010 plan and more recent park use observations, staff developed a list of proposed improvements including:

- A new permanent restroom to bring the park up to the district's standards for a Community Park
- New ADA-compliant pathways (paved) and accessibility improvements around the Event Barn
- Renovation to the southern lot of the existing main parking area to address circulation, operational and accessibility issues
- Enclosure of the existing off leash area to increase park-user safety and reduce conflicts

- Creation of a “History Walk” along the paved pathways with interpretive signs to celebrate the park's history and features
- Preparation of a maintenance report to ensure the park's structures are preserved for future generations. This guide will provide recommendations for the care and upkeep of the park's historic structures. Any construction recommendations highlighted in this report are not part of this project, and will be funded as part of a future project.

To collect feedback on the proposed improvements, staff developed an extensive public involvement plan. This process, as detailed below, includes:

- Project website creation (Winter 2023/2024)
 - <https://www.bendparksandrec.org/project/hollinshead-park/>
- Public Comment Form available on project website (January 2024-present)
 - 30 individual comments submitted via the project website or email (pre-design release)
 - 28 individual comments submitted via website or email (post-design release)
- Four “A” frame poster boards posted on site for project information and future updates (January 2024-present)
- Project stakeholder email list created, includes:
 - 15 Citywide Neighborhood Association contacts
 - 74 individual residents
- Stakeholder project kick off email sent (2/23/2024)
- Project kick off survey, in both English and Spanish, released (2/23/2024)
- Tabled at Orchard Neighborhood Association yearly meeting (5/7/2024)
- Open house invitation postcard mailed to all homes within ¾ mile of Hollinshead Park (5/7/2024) - approximately 2,665 residences
- Stakeholder open house invitation email sent (5/8/2024)
- BPRD Press Release announcing open house (5/14/2024)
 - Coverage in local print, TV and radio
 - <https://ktvz.com/news/bend/2024/05/14/bend-park-and-rec-planning-upgrades-at-historic-hollinshead-park-open-house-set-for-next-monday/>
 - https://www.centraloregondaily.com/news/local/hollinshead-park-improvements-open-house/article_bd1382ca-124d-11ef-91c0-cb8dc6cc5a5f.html
 - <https://kbnd.com/kbnd-news/local-news-feed/743476/upgrades-planned-for-hollinshead-park>
 - https://www.bendbulletin.com/localstate/bend-park-district-seeks-feedback-on-hollinshead-park-improvements/article_26d348e6-122e-11ef-af76-1fd5273c7d99.html
- Project kick off survey closed (5/17/2024)
 - 188 surveys completed with 368 individual comments (pre-design release)
- Project Open House held (5/20/2024)
 - 70+ people attended
 - 22 individual comment cards filled out at public open house (post-design release)

A summary report of feedback, along with all of the individual comments and questions submitted to date, can be found in the Public Feedback Report (Attachment A).

Staff took guidance from the 2010 preferred concept plan, feedback from the recent survey, online comments, emails, the opportunities and constraints of the site and the BPRD Development Standards to develop the proposed initial design plans (Attachment B).

If approved by the board, staff will continue to use public and internal feedback to refine the project design moving forward.

BUDGETARY IMPACT

The 2025-2029 Capital Improvement Plan approved funding allocation for this project is \$1,100,000. This budget includes \$750,000 in property tax funds, \$250,000 in SDC funds and \$100,000 of alternative funds. To date, \$240,639.10 has been spent on design services and related expenses, leaving \$859,360.90 available for the remainder of design, permitting and development of the park, including owner miscellaneous and administrative costs. The engineers cost estimate for the initial concept design is \$1,862,300, and will be refined at critical milestones during the design process following approval of the initial design concept. Costs exceeding the approved funding allocation for this project was expected. Staff believes this project is a great candidate for additional alternative funding and intends to begin pursuing those opportunities.

STAFF RECOMMENDATION

Staff recommends approval of the Hollinshead Park updated preferred concept plan. Once approved, staff will move forward to complete the design and construct the improvements.

MOTION

I move to approve the Hollinshead Park updated preferred concept plan.

ATTACHMENT

1. Attachment A - Public Feedback Report
2. Attachment B – Preferred Concept Plan

Hollinshead Park Improvement Project Public Feedback Report

Overview

This report summarizes, at a high level, the comments and feedback received from the community regarding the proposed improvements to Hollinshead Park. The feedback was collected from various sources, including a project kick off survey, emails, online comment form submissions, and in-person comment cards collected at the open house event. This report identifies common themes, categorizes the responses as supportive or opposed to specific project elements, and provides insights into general community sentiment.

Common Themes

General Support for Improvements

1. Permanent Restrooms and ADA Upgrades:

Many respondents expressed support for the addition of permanent restrooms and improvements to, and development of, ADA compliant park elements, emphasizing the need for better facilities.

- **Example:** "I like the proposed improvement of a permanent bathroom, ADA compliance."
- **Example:** "I welcome many of the changes being proposed here, bathrooms are an obvious need, ADA path is excellent"

2. Parking Upgrades:

Several comments supported the proposed parking lot upgrades, highlighting the need for better parking facilities to accommodate park visitors.

- **Example:** "I feel as though a lot of the upgrades are definitely needed such as the bathrooms and parking lot upgrades"
- **Example:** "Parking lot upgrades are necessary."

3. History Walk:

There was support for the development of an interpretive history walk, with respondents appreciating the educational and historical value it would add.

- **Example:** "The interpretive addition for the history is a great idea. It will enrich the park experience."
- **Example:** "I like the plan for a history walk. It will be a nice way to learn more about the park's past."

4. Historical Structures Report:

Support for the report aimed at preserving and restoring historic structures in the park, recognizing the importance of maintaining the park's historical integrity.

- **Example:** "Development of a report to aid in the preservation of historic structures is crucial. The park's history is a significant aspect."
- **Example:** "I support the initiative to preserve the historical structures. It's important to maintain the park's heritage."

5. Enhanced Accessibility:

Support for making the park more accessible for all users, including those with mobility needs and families with children.

- **Example:** "Increasing accessibility is important for the community to enjoy the park."
- **Example:** "These park improvements sound good. They will improve the user experience for all!"

General Opposition to Improvements

1. Permanent Restrooms

Some respondents believe permanent restrooms are unnecessary and could lead to vandalism and illegal activities.

- **Example:** "I don't believe it is necessary to have restrooms—this isn't a park where people spend long periods of time. The portable restrooms should be sufficient. In addition to being more expensive to maintain once constructed, permanent restrooms may attract vandalism and other illegal activities."
- **Example:** "Permanent bathrooms are hit with crime."

2. Parking Upgrades

There is concern that parking upgrades would detract from the park's natural beauty and are unnecessary outside of large events.

- **Example:** "Please do not pave more of the park for the parking lot. The lot is underutilized as it is outside of large events at the barn. There is plenty of street parking in the neighborhood for these events."
- **Example:** "I understand that parking is an issue, but paving more of the park would take away from its natural beauty. We should look for alternative solutions that don't involve adding more concrete."

3. History Walk

Some feel that a history walk is unnecessary and could detract from the park's natural charm.

- **Example:** "I don't think the interpretive signs add value"
- **Example:** "The park's natural beauty should be the focus, not cluttering it with signs and paths. A history walk seems unnecessary and could detract from the park's charm."

4. Historical Structures Report

There is a belief that funds could be better used on maintaining and improving existing facilities rather than on a historical structures report.

- **Example:** "While preserving history is important, I believe the focus should be on the current usability of the park. The funds could be better used on maintaining and improving existing facilities."
- **Example:** "The historical structures report seems like an added expense that might not provide significant value. The park should prioritize current and future needs over historical preservation."

5. Enhanced Accessibility

Some respondents are concerned that enhanced accessibility could alter the park's natural landscape and compromise its character.

- **Example:** "Enhanced accessibility is good, but not at the cost of altering the park's natural landscape. We need to find a balance that doesn't compromise the park's character."
- **Example:** "I am all for making the park more accessible, but the proposed changes might be too intrusive. The park's charm lies in its simplicity and natural feel."

Off-Leash Area Specific Feedback

Approximately an equal number of comments were submitted both in favor of and opposed to improvements to the designated Off-Leash Area.

Support for Fencing the Off-Leash Area

1. Improved Safety and Reduced Conflicts:

Belief that fencing the off-leash area will enhance safety for all park users by clearly delineating areas for dogs.

- **Example:** "I am strongly in favor of fencing in the OLA. I have had several negative interactions with jumping, growling, and aggressive dogs."
- **Example:** "We try to stick to the on-leash area's but there are often dogs off leash that roam away from their owners. Our kids are on high alert and rarely enjoy the park with ease."

2. Better Management of Dogs:

Feeling that a fenced area will help in managing dogs better, ensuring they remain in designated areas.

- **Example:** "A fenced dog area will help ensure that other patrons can also use the park without having dogs jump on them."
- **Example:** "too many unleashed dogs running around entire park too much dog poop around the park"

3. Increased Usability and Enjoyment for All Visitors:

Belief that fencing will make the park more enjoyable for everyone by reducing conflicts and making it easier for non-dog owners to use the park.

- **Example:** "It preserves the off-leash area while also ensuring that other patrons can also use the park without having dogs jump on them."
- **Example:** "In general, the out of control dog situation forces us to leave this park in peak hours. Enclosing this area and asking people to observe the leash law is our greatest request."

4. Protection of Park Amenities:

Belief that fencing will help protect other park amenities and ensure different areas can be used for their intended purposes.

- **Example:** "Fencing the area will enable other uses of the rest of the park without the issue of dogs invading your picnic, etc."
- **Example:** "I don't know how to address this issue but almost every time I run into an off-leash dog on the canal walk with an argumentative person. Maybe stress the importance for wildlife protection"

5. Positive Impact on Community Dynamics:

Feeling that fencing will improve the overall community dynamics by reducing conflicts and creating a more structured environment.

- **Example:** "It will help manage the park better and make it a safer place for everyone, including those who are afraid of dogs."
- **Example:** "An off leash dog running up to that dog who is on leash could cause a big problem if the leashed dog feels threatened. That prevents people like me from being able to walk in a park because other people aren't following the rules."

Opposition to Fencing the Off-Leash Area

1. Impact on Park's Natural and Open Character:

Concerns that fencing the off-leash area will disrupt the park's open and natural feel, making it less enjoyable.

- **Example:** "The open space is part of the neighborhood charm. I have seen no reason for a fenced area."
- **Example:** "Please do not enclosed the dog off lease area. fencing will reduce the open space flow aesthetic of the park."

2. Increased Dog Aggression and Conflicts:

Fears that fencing could lead to more aggressive behavior among dogs and increased conflicts at the entry points.

- **Example:** "Dogs frequently act aggressively toward one another at gates."
- **Example:** "I have seen far more dog-to-dog and dog-to-human physical altercations in every fenced park I have been to in the city than in the two primary unfenced areas I have frequented in this area"

3. Maintenance Impact:

Concerns about the cost and effort required to maintain the fenced area, and the potential green space degradation.

- **Example:** "Fences require maintenance. Creating a new recurring cost is fiscally foolhardy when there is no need for a fence."
- **Example:** "I still have concerns that there are no likely future plans yet for "rehabbing" fenced in area for dogs should the sod/grass become damaged by heavy use."

4. Historical and Aesthetic Preservation:

Desire to preserve the historical and aesthetic aspects of the park, fearing that fencing could detract from its historical significance.

- **Example:** "The park is a beautiful place and I'm afraid it will lose its wonderful sense of place and history with fencing."
- **Example:** "Please no chain link fencing for the OLA, something in-line with the current aesthetic of the park."

5. Negative Impact on Community and Social Dynamics:

Concerns about the impact on the social dynamics of the park, creating a less friendly environment.

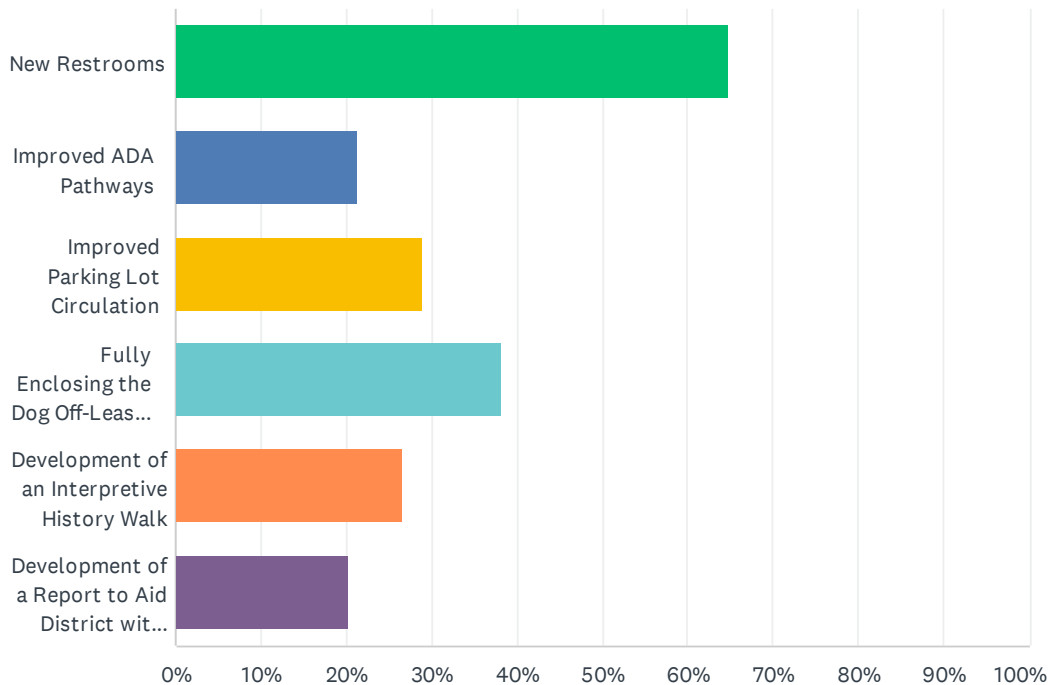
- **Example:** " I think the park should remain unfenced. It is what makes the park more of a neighborhood park rather than other dog parks in Bend. It keeps usage down and people and dogs that utilize the park are usually better behaved and owners pay more attention to their dogs."
- **Example:** "I believe the lack of fence currently ensures that only attentive owners with well trained dogs bring their dogs to this park."

Conclusion

The feedback received from the community on the proposed improvements to Hollinshead Park reveals diverse opinions. By carefully considering these insights and balancing the various interests, the district can meet the needs of park users while preserving the park's natural beauty and unique feel.

Q1 Which of the proposed improvements are you most excited about?

Answered: 173 Skipped: 15



ANSWER CHOICES	RESPONSES	
New Restrooms	64.74%	112
Improved ADA Pathways	21.39%	37
Improved Parking Lot Circulation	28.90%	50
Fully Enclosing the Dog Off-Leash Area	38.15%	66
Development of an Interpretive History Walk	26.59%	46
Development of a Report to Aid District with Preservation/Restoration of Historic Structures	20.23%	35
Total Respondents: 173		

#	OTHER (PLEASE SPECIFY)	DATE
1	Please do not reduce the size of the dog area. Do not install playground equipment.	5/17/2024 10:18 AM
2	This is the best park in Bend! We drive from swbend almost everyday just for this park. Beautiful trees, green grass and nice amount of sitting places. Thank you Hollingsheds and Bend City and Parks! I hope you don't close it tho. But ruin a true park like atmosphere	5/14/2024 7:16 PM
3	I have been visiting Hollingshead park to more than 20 years. I hope this will continue to be the best off leash dog park in Bend. The most important thing to me and most people I know, is that our dogs can enjoy the current size of the park. I was unable to find any proposed plans. I hope this will be taken into consideration.	5/12/2024 6:06 PM
4	This park doesn't need change. Don't waste tax dollars on something that works great as is	5/9/2024 5:23 PM
5	More benches. Why not m ake the dog park lawn just off leash and the other beautiful lawn on	5/7/2024 9:18 AM

Hollinshead Park Improvement Project Kick-Off Survey

the other side of the parking lot the leash and people area???? DON'T make the off leash area smaller PLEASE!

6	None. The park is great as is.	5/4/2024 2:30 PM
7	None of the above. This park is a GEM and there is nothing wrong with it. One of the best parks to take your dog to. Aren't there enough human centric parks in Bend already? Such a shame that a million dollars is going towards 'fixing' something that is not broken. This is horrible news. This is an incredibly safe dog park and no need to fence it in due to its size and location. Documents specify that they want to improve local foliage, please explain how construction and paved pathways achieve this goal? People can google history now a days. Put up a sign near historic buildings and leave everything else alone.	5/3/2024 6:01 PM
8	None of these I believe this is a major waste of tax payers money to fix something that is not broken.	5/3/2024 5:52 PM
9	None. it's fine as is and don't want construction taking place for years across from my house. this is really going to ruin a park that has no issues.	5/3/2024 1:46 PM
10	I know what I am not excited about: the prospect of a fenced in dog park!	5/2/2024 6:12 PM
11	A larger off leash area and maybe separate off leash areas for different types of activity would be nice. It would be wonderful to have access to one of the steep hills as my dog loves to chase his ball up the steep hill and I know others like it too.	4/29/2024 5:55 PM
12	tables and or benches?	4/28/2024 2:00 PM
13	I wish there was a bench or a table at the top of the hill near the old handicap parking. It would be lovely place to sit listening to the water.	4/27/2024 11:42 AM
14	Additional picnic tables, benches	4/16/2024 11:35 AM
15	Be sure to restrict off leash dogs to only the off leash area.	4/13/2024 12:26 PM
16	Coffee kiosk?	4/13/2024 10:45 AM
17	I enjoy that the off leash dog area isn't enclosed, it makes this little park seem much more open. I can imagine if the off leash dog area was enclosed, the grass would not withstand in the area which would be a shame. Would love some dog/child proof gate to separate the parking lots, but not an enclosed area.	4/12/2024 4:47 PM
18	Include upper canal area for dog use (off leash). All improvements sound really good. Thanks	4/11/2024 11:13 AM
19	We love this park, but with two small children that are very weary of dogs, the off lease enforcement and signage is really poor. That and dog owners, respectively, do not share the same sentiment about what "off lease" seems to mean.	4/11/2024 10:04 AM
20	I enjoy the open and natural feel of this park. Adding a dog fence and more parking would take away from the natural feel of the space. Users could be encouraged to bike or walk instead of driving. There is plenty of research behind emotional and physical well-being being in regards to natural spaces. Adding fences and more traffic would take away from the flow of the park.	4/7/2024 10:24 AM
21	I love that it is not an enclosed dog park and would like to maintain that.	4/5/2024 8:34 AM
22	Please keep the off-leash dog area easy to walk in a large area. Right now many people walk loops through the grass around the off leash area while leaving the center for dogs more prone to play or ball chase.	4/4/2024 5:23 PM
23	Swings	3/28/2024 4:47 PM
24	Undercover sports court (basketball).	3/27/2024 1:27 PM
25	I really would enjoy and use an indoor basketball court	3/27/2024 9:17 AM
26	Please consider a covered outdoor sports/basketball court. I don't believe any of our parks have one.	3/27/2024 8:14 AM
27	Would prefer dog park not be fenced in - but if that would help with improved ADA accessible, then would be for it. Also, please no metal fencing - wood fencing would be ideal. Metal fencing would ruin the peaceful vibe/look of the park.	3/23/2024 1:07 PM
28	NOT enclosing the dog park. An unenclosed dog park attracts a different type of dog/owner	3/21/2024 3:09 PM

Hollinshead Park Improvement Project Kick-Off Survey

which contributes to the vibe of the park. There are plenty of enclosed dog parks in Bend, but Hollinshead Park is my favorite because it is not enclosed.

29	Hope you're fencing off the canal as part of the dog area too. During the summer almost every person takes their dog up to swim, and we won't be stopping if you don't build an opportunity for dogs to cool off in summer like a sprinkler/splash pad.	3/19/2024 5:04 PM
30	I don't think there's any need for a fenced in section of dog park. As a neighbor who visits the park at least 5 times a week, I think the park and the community that recreates there appreciates the openness that the fence free parks allow. There are neighboring fenced dog parks available if someone prefers that (pine nursery, big sky). The beauty of Hollinshead is its open air.	3/19/2024 9:20 AM
31	The off leash dogs definitely need to be contained. They've come after me and with my dogs on leash it makes for a tenuous situation.	3/18/2024 1:42 PM
32	Bathroom wud be great also	3/16/2024 6:05 PM
33	Please include ADA Pathways to the off leash area. I have seen many elderly people fall do to walking on uneven terrain, and not being able to use a mobility assistive device. I was on a knee scooter several times through 4 foot surgeries and have chronic pain in my foot now. There is not 1 off leash area in Bend that is handicap accessible.	3/16/2024 6:00 PM
34	Will the park be closed down during renovation ?	3/14/2024 7:34 PM
35	No fence booo. The open-ness and lack of hyper-manicured feel is what makes this place special.	3/14/2024 4:19 PM
36	\$1M is a lot of money for luxury parks. I would delete the two development goals and focus on the basics first in this order: 1. Fence 2. Pathways 3. Parking lot	3/14/2024 11:10 AM
37	None of these. Bend Parks and Rec isnt able to maintain the parks and infrastructure it already has. Spending money on more infrastructure when BPR cant maintain the infrastructure it already has is outrageous. The area has no play structure for kids. Parks are meant to serve the entire community. The improvements seem to cater to everything except children and families.	3/14/2024 5:49 AM
38	This is a well used beautiful park and needs some extra TLC. Glad to see it happening.	3/13/2024 5:19 PM
39	I bring my dog there regularly and would NOT wish to have a fully enclosed dog area but would love to have a western and eastern long fence at the entrances to prevent any escaping. 😊	3/13/2024 3:26 PM
40	-	3/13/2024 1:30 PM
41	I am really weary of people running their dogs all over the park, so thank goodness we will make the boundaries more clear and enforceable. I do love this park for its natural amenities, also, so anything that preserves grassy areas, the sensitive slopes of the hill, and the landscape features (trees, OSU demonstration area and community gardens) is especially important to me.	3/13/2024 1:13 PM
42	I am a dog owner myself & I love dog parks, but I wish there wasn't one in this location. The barn & the beautiful trees are lovely, we've had events there in the past but now the whole park is over run with dogs, full of dog poop & so unpleasant, we never go here even though we live in the neighborhood. All of my neighbors say the same thing, Hollinshead has gone to the dogs!	3/13/2024 12:52 PM
43	We love the little trail's and areas to walk on the southeast perimeter of the park. It's like a mini-hike in our own backyard.	3/13/2024 12:15 PM
44	We used to take my old dog to Hollinshead and he loved it, but now we have a zany doodle who knows no bounds. It would be great to have the dog park enclosed.	3/13/2024 11:45 AM
45	I enjoy the beauty of the community garden. I wonder if an expansion of the garden area with an area for visitors to access and learn about the various plantings would be possible. The southeast area of the park down around the maintenance barn is rather underused and barren. Would a second garden area in this area be possible? Some of the neighbors bordering the park and along Edgewood drive and Viking Ave have experienced rat infestations. Is the rock island feature on the east end of the park promoting a home for these rodents?	3/13/2024 10:46 AM
46	I wish we didn't have to enclose the dog off-leash area. I am sure it is a liability as is, but it is one of the few parks that don't have an ugly fence. :< oh well...	3/13/2024 9:20 AM

Hollinshead Park Improvement Project Kick-Off Survey

47	I've only been to the park 2x (not including pass through trips) and haven't been back as there is dog poop literally all over the park. The last time we went was for the BPRD holiday event and both my kids stepped in dog poop, totally ruined the experience. Fencing the dog park should be the #1 priority for this project as it will make the park more enjoyable for all users by limited the dog waste in the other areas and keeping unleashed dogs away from people who are not comfortable with dogs. Everyone should be able to enjoy this park.	3/11/2024 8:39 AM
48	Definitely not a fan of fencing it in. We come to this park almost daily and we love it how it is	3/10/2024 12:49 PM
49	I feel like the magic of the park will be lost with a fence. All fenced dog parks turn to dirt and smell including pine nursery and the the new park south of town.	3/7/2024 2:38 PM
50	ADA pathways, accessibility, interpretive walk and restroom are also very high on the list, but without doing something about the dogs, they don't have as much benefit as they would otherwise.	3/7/2024 10:29 AM
51	Please please please change the mentality of the southern woodsy area along the canal be mandatory Leash Required areas. It's being abused horribly. The canal is eroding. It's a dusty trail. So many off leash. Very few on leash. Trail unsafe for persons w mobility issues and dogs unable to be off leash.	3/4/2024 5:01 PM
52	Keep the whole park dog off leash. This park is the only off dog leash area for well be have dogs because of the lack of fences. The large area allows for extended exercise for adults and families while out with a dog. Other dog parks don't encourage family participation with there dogs as well as hollingshead	2/27/2024 5:55 PM
53	Gardens and fenced in off leash area	2/27/2024 10:37 AM
54	How big will the fenced in area be? Will it include the existing barriers or be smaller?	2/26/2024 2:03 PM

Q2 What park amenities do you currently use most?

Answered: 174 Skipped: 14

#	RESPONSES	DATE
1	Off leash dog area	5/17/2024 2:11 PM
2	Dog off-lease area	5/17/2024 10:18 AM
3	Dog park	5/17/2024 6:37 AM
4	varies	5/15/2024 9:28 AM
5	Benches	5/14/2024 7:16 PM
6	Walking trails and off leash area	5/14/2024 7:14 AM
7	Community garden and walking	5/13/2024 11:31 AM
8	Enjoy most the Waterwise Demonstration garden	5/13/2024 10:38 AM
9	The off leash area	5/12/2024 6:06 PM
10	Trails	5/10/2024 7:02 AM
11	Pathways	5/9/2024 7:29 PM
12	The large off leash grassy area. Enclosing it is unnecessary and a waste of our tax dollars	5/9/2024 5:23 PM
13	Dog park	5/9/2024 3:59 PM
14	Garden and trails near irrigation canal.	5/8/2024 4:15 PM
15	Off leash and benches	5/7/2024 9:18 AM
16	Dog park	5/4/2024 2:30 PM
17	The dog park and walking trails. Look up Cooper Park in Bozeman, Montana, much smaller dog park, no fencing. People whose dogs don't listen won't take their dogs to a non fenced dog park. The current set up deters poorly behaved pet owners and dogs.	5/3/2024 6:01 PM
18	All of the amenities you are proposing to change. I've talked to several residents of the park and all are upset over this.	5/3/2024 5:52 PM
19	the walking trails with my dogs. fun that we can go on a loop then go into the off leash area. fencing it in is ridiculous use of money	5/3/2024 1:46 PM
20	A really nice, unique, open, non-fenced, happy dog park.	5/2/2024 6:12 PM
21	We use the off leash area	4/29/2024 5:55 PM
22	Canal walk with my dog in on-leash area	4/29/2024 12:56 PM
23	The oark	4/28/2024 3:22 PM
24	tables and benches + bathroom + community garden	4/28/2024 2:00 PM
25	Off leash dog park	4/27/2024 12:12 PM
26	Bathroom, community garden, benches, park tables, grassy areas.	4/27/2024 11:42 AM
27	Dog park! Please do not shrink.	4/27/2024 8:25 AM
28	General land	4/26/2024 7:11 PM
29	Off leash dog area	4/25/2024 10:21 PM
30	The open orchard. Fencing this historical property will lose its charm.	4/21/2024 7:16 PM

Hollinshead Park Improvement Project Kick-Off Survey

31	Dog off leash area!!	4/20/2024 1:21 PM
32	off leash dog area	4/19/2024 3:18 PM
33	Off leash dog park and just got a plot in the community garden	4/19/2024 8:16 AM
34	Dog park and community garden	4/19/2024 8:04 AM
35	The off-leash dog area!	4/19/2024 7:57 AM
36	Trails, and trees for kid climbing	4/17/2024 10:08 PM
37	Have rented Hollinshead barn several times for work retreats. Walking around the grounds.	4/16/2024 9:02 PM
38	Dog park	4/16/2024 11:35 AM
39	Dog park	4/15/2024 6:19 AM
40	Open spaces but we have to constantly avoid off-leash / out of control dogs.	4/15/2024 5:54 AM
41	Off leash dog park	4/14/2024 8:41 PM
42	dog park	4/13/2024 9:40 PM
43	Paths	4/13/2024 12:26 PM
44	Walking, attending events in the Barn. Happy to have the dogs more contained.	4/13/2024 10:45 AM
45	The gardens	4/12/2024 5:23 PM
46	Off leash dog park	4/12/2024 4:47 PM
47	Dog park and walking trail	4/11/2024 11:37 PM
48	Parking and dog park	4/11/2024 11:13 AM
49	The natural garden area and everything other than the dog park.	4/11/2024 10:04 AM
50	Walk to and through the park regularly.	4/11/2024 9:17 AM
51	park and event space	4/11/2024 9:07 AM
52	The open areas.	4/7/2024 10:24 AM
53	Off-leash dog walking, water-wise garden inspiration	4/6/2024 2:47 PM
54	dog park, barn for work events	4/5/2024 12:13 PM
55	The grassy park for playing fetch with my dog and enjoying the flowering trees in springtime!	4/5/2024 8:34 AM
56	Off leash dog area. Walking paths with dogs. Walking through the dog area from one end to the other to keep access to the neighborhood sidewalks for longer walks. We also utilize the canal water in the summer for a on-leash dog cool off towards the end of hot walks.	4/4/2024 5:23 PM
57	The dog park and surrounding woods and trails.	4/4/2024 2:21 PM
58	Dog park	4/3/2024 2:18 PM
59	Off leash unleashed dog park	4/3/2024 1:51 PM
60	Dog park, trails, sledding hill in the winter	4/2/2024 8:30 AM
61	Dog off leash area	4/1/2024 1:14 PM
62	Upper trail rock areas	3/29/2024 8:17 AM
63	Walking path, sledding in winter	3/28/2024 4:47 PM
64	I fenced dog park	3/28/2024 9:48 AM
65	Dog area	3/27/2024 6:03 PM
66	Bathrooms, dog parks, and basketball hoops.	3/27/2024 9:17 AM
67	Dog parks, playgrounds	3/27/2024 8:14 AM

Hollinshead Park Improvement Project Kick-Off Survey

68	Off leash area	3/27/2024 7:20 AM
69	Off leash park	3/25/2024 10:11 PM
70	External walking path.	3/23/2024 3:41 PM
71	Dog park	3/23/2024 1:07 PM
72	Dog park.	3/23/2024 11:01 AM
73	Off leash dog park, picnic tables, parking	3/22/2024 3:44 PM
74	The dog park and adjacent trails.	3/21/2024 3:09 PM
75	Dog park	3/21/2024 7:58 AM
76	Off leash dog area	3/19/2024 5:54 PM
77	Dog park. I enjoy that it isn't fenced in and would like to keep it that way- it feels more like a park setting than typical dog park. All of the other enclosed dog parks in town turn into dirt/mud pits for some reason and would not like to see that at Hollinshead.	3/19/2024 5:11 PM
78	The canal	3/19/2024 5:04 PM
79	Dog park	3/19/2024 1:27 PM
80	Dog park!	3/19/2024 9:20 AM
81	Dog park	3/18/2024 9:12 PM
82	Dog park	3/18/2024 7:30 PM
83	Walking the trail around the park, the port a potty, walking through the interpretive gardens and community gardens.	3/18/2024 1:42 PM
84	Dog Park	3/18/2024 1:13 PM
85	Off leash dog park	3/18/2024 11:57 AM
86	Field	3/18/2024 10:34 AM
87	Dog park	3/16/2024 6:05 PM
88	Dog park and wish there was a better restroom than the portabiffy.	3/16/2024 6:00 PM
89	Off leash dog park	3/16/2024 4:27 PM
90	Water up top for dogs to swim in the summer	3/16/2024 9:56 AM
91	Dog park	3/15/2024 7:56 PM
92	Off leash dog park, not fenced	3/15/2024 7:56 PM
93	Dog park	3/15/2024 2:45 PM
94	Walking/biking with toddlers	3/15/2024 1:21 PM
95	Paths and display garden	3/15/2024 12:49 PM
96	Running up and down the hills. Have used the barn for an event. Enjoy checking out the gardens and flowers.	3/15/2024 11:31 AM
97	Dog park	3/15/2024 7:33 AM
98	None, I don't use this park very often or at all anymore because there isn't a fence for dogs and my kids don't feel comfortable around them.	3/14/2024 9:33 PM
99	Walking my dog. Meeting dog/human friends.	3/14/2024 7:34 PM
100	dog off leash, canal walks	3/14/2024 4:54 PM
101	dog park	3/14/2024 4:25 PM
102	Dog park	3/14/2024 4:19 PM

Hollinshead Park Improvement Project Kick-Off Survey

103	I walk my dog there twice a day.	3/14/2024 4:17 PM
104	Walk the dog on leash because the dog area is unusable as off leash area because it is unfenced.	3/14/2024 11:10 AM
105	open greenspaces	3/14/2024 9:01 AM
106	walk there regularly with our dog and enjoy the many natural areas, trees, community garden and the historic aspects. It is so well loved and used in diverse ways its a perfect example of a neighborhood park and community gathering place	3/14/2024 8:41 AM
107	I currently use is as a portion of my dogs walking route from the house. It's nice to stop and hang out in the park for a second. I don't usually stay too long as my dog can't be trusted off leash with the road so close. Having a fenced in area will increase safety for both people and dogs	3/14/2024 6:45 AM
108	All available.	3/14/2024 5:49 AM
109	Off leash dog park	3/13/2024 8:57 PM
110	Dog park	3/13/2024 5:36 PM
111	I am an OSU Master gardener and spend time volunteering at the community and Water-wise Gardens. This is the part of the park I use on a regular basis.	3/13/2024 5:19 PM
112	Dog area!! Yay!	3/13/2024 3:26 PM
113	Barn, Paths	3/13/2024 1:30 PM
114	sidewalk, garden areas, I walk there frequently (along Jones Road as well as in/through the park) and appreciate the quieter areas. I tend to stay away when the dog park is over-active.	3/13/2024 1:13 PM
115	I used to like walking through the park	3/13/2024 12:52 PM
116	Trail	3/13/2024 12:47 PM
117	Hanging out in the beautiful grassy areas under the trees. Unfortunately, often I have to avoid dog poop that is out of the dog area.	3/13/2024 12:29 PM
118	The trails and rocks. My little daughter loves climbing exploring and hiking around.	3/13/2024 12:15 PM
119	Lawn areas, paths, community garden	3/13/2024 12:09 PM
120	Off leash	3/13/2024 11:53 AM
121	Walking paths, pickleball courts	3/13/2024 11:45 AM
122	Dog park	3/13/2024 10:57 AM
123	I like visiting the old house and would like to be able to go inside some time with a park ranger tour or something like that. Also like the garden and walking through the park.	3/13/2024 10:46 AM
124	Off leash dog park	3/13/2024 9:43 AM
125	Dog park	3/13/2024 9:39 AM
126	Letting dog walk around	3/13/2024 9:25 AM
127	off-leash dog area	3/13/2024 9:20 AM
128	I love this park and love the history. My kids really enjoy the canal area and pathways up in that area. The rock pile on the east side has a cache and the kids love to play on those as well. I will not walk my dogs over near this park because of the unfenced dog area and my dogs are very reactive on leash, I really like the idea of fencing it as there are many dogs that don't have any sense of boundaries there.	3/13/2024 9:12 AM
129	off leash area	3/13/2024 9:06 AM
130	Trails, barn for events, demonstration garden.	3/13/2024 8:45 AM
131	Playing on the road area with my kids and the walking paths.	3/13/2024 8:36 AM
132	walking paths around the edge of the park the grassy picnic area on south end of park enjoy	3/13/2024 8:10 AM

Hollinshead Park Improvement Project Kick-Off Survey

	the garden area	
133	Dog park	3/13/2024 8:05 AM
134	Dog park and trails	3/13/2024 1:20 AM
135	Dog park	3/12/2024 11:03 PM
136	I use the sidewalk along the park up Jones/12th Street almost daily; I appreciate being away from the street.	3/12/2024 10:37 PM
137	Off leash dog park.	3/12/2024 10:25 PM
138	Off leash dog area	3/12/2024 9:52 PM
139	Informal trails in the hills behind the barn	3/12/2024 6:49 PM
140	I rarely visit this park because my child is afraid of dogs. If the off-leash area were fully fenced we would be much more likely to visit to play in the open lawn space. Currently, we would not even use the trail to pass through the park because she gets so scared when approached by dogs.	3/11/2024 5:34 PM
141	Dog park & walking trails	3/11/2024 2:15 PM
142	Visiting the historic structures and pass through trips (on walks and runs)	3/11/2024 8:39 AM
143	Dog park	3/10/2024 8:51 PM
144	Dog Park	3/10/2024 8:43 PM
145	Trash cans and poop bags	3/10/2024 12:49 PM
146	Dog park	3/10/2024 11:46 AM
147	Dog park every day	3/7/2024 2:57 PM
148	The off leash dog park	3/7/2024 2:38 PM
149	The natural space, boulder slopes, 'trails'.	3/7/2024 10:29 AM
150	Due to offillegal off leash dogs, we aren't even able to walk in the park. Fencing off leash area would surely help define off leash? But needs bigger stronger signs. Your current signs are nothing.	3/4/2024 5:01 PM
151	Dog park every day	3/4/2024 2:28 PM
152	Dog park	3/3/2024 8:46 PM
153	Dog park	3/3/2024 5:01 PM
154	The smaller trails on the south edge of the park	3/3/2024 4:17 PM
155	Enjoy walking the grassy areas and laying in the grass in the summer	3/3/2024 2:57 PM
156	Pathways & trails	3/3/2024 12:02 PM
157	Dog park	3/2/2024 7:03 PM
158	Off leash dog park	3/2/2024 4:04 PM
159	Photography locations	3/2/2024 8:10 AM
160	Dog park	3/1/2024 5:21 PM
161	Off-leash dog park	3/1/2024 7:08 AM
162	Off leash area, natural surface paths	2/29/2024 8:12 PM
163	Walking through the park, enjoying the demonstration garden.	2/29/2024 8:50 AM
164	Walking path & Dog park	2/28/2024 5:20 PM
165	The off leash dog area	2/27/2024 5:55 PM
166	Off leash dog area	2/27/2024 1:14 PM

Hollinshead Park Improvement Project Kick-Off Survey

167	Dog park, gardens	2/27/2024 10:37 AM
168	Dog park Parking lot Community Garden	2/26/2024 6:10 PM
169	Walking trail; open spaces (lawn area that isn't for dogs); I like to look at the gardens (but don't have a plot); demonstration garden	2/25/2024 7:07 AM
170	Enjoy freely walking in all the grassy green space	2/23/2024 7:00 PM
171	Garden and walking trails.	2/23/2024 2:55 PM
172	Dog Park	2/23/2024 2:41 PM
173	Off leash area and paths	2/23/2024 11:41 AM
174	Dog park	2/23/2024 11:30 AM

Q3 Is there anything else you would like the design team to know about your experiences in Hollinshead Park?

Answered: 140 Skipped: 48

#	RESPONSES	DATE
1	Please do not remove ANY trees including those in the parking lot.	5/17/2024 2:11 PM
2	Water for dogs at the east end of park	5/17/2024 10:18 AM
3	I fear that the dog park will be smaller and more enclosed causing more tension with the dogs and not allowing easy access to separate yourself from others when you want to. Currently it's very easy to let your dogs enjoy the park without feeling like or being forced on top of others with their dogs.	5/17/2024 6:37 AM
4	uncontrolled off leash dogs can be a problem	5/15/2024 9:28 AM
5	Another doggy trash area btwn the 2 others wld be useful.	5/14/2024 7:16 PM
6	I love that it is one of the few parks in the town that does not have a fenced in area for off leash dogs. I love the open feel of the park and think putting a fence up would section off the park and make it feel smaller. It's so nice for dog owners to socialize at this time and have never had any problems with off leash dogs in my time at the park	5/14/2024 7:14 AM
7	Tackle the dog issues: loose dogs out of the off-leash area, owners who don't pick up feces. Park stewards and enforcement needed. Thanks.	5/13/2024 11:31 AM
8	Would like to see an expansion of the Waterwise garden, perhaps in lieu of so much grass.	5/13/2024 10:38 AM
9	This is the best dog park in bend, please don't reduce the size of the off leash area.	5/12/2024 6:06 PM
10	Please maintain its charm. If you are fencing in dog area, consider fence design to maintain charm	5/10/2024 7:02 AM
11	Leave it alone	5/9/2024 5:23 PM
12	I think it's been great having the dog park area not enclosed. That is the change that I would least like to see.	5/9/2024 3:59 PM
13	the people who use the dog park are not in favor of fencing it off- what makes it great and different is that you have to have a well behaved dog that can be recalled- fencing it will bring all the crazy aggressive dogs - im very very dissapointed that my taxes will pay for this and i will not vote for further P&R funding should this happen	5/9/2024 1:48 PM
14	Curren leash rules are not followed by many users with dogs up in the trails area. Better delineation would help this.	5/8/2024 4:15 PM
15	It IS A GREAT PARK!!!!!!!!!!!!!!	5/7/2024 9:18 AM
16	Do not fence the off leash area. Instead make the whole park off leash.	5/4/2024 2:30 PM
17	Please focus on more pressing issues the town is facing vs destroying a perfectly well maintained park encompassed by 'older' homes. We moved to this part of town to avoid construction and have peace. I will be sharing this survey with all of my regular hollinshead park goers	5/3/2024 6:01 PM
18	Yes please leave the park alone. Use the money to fix things that are actually broken ie: roads, homeless, economy, traffic flow.	5/3/2024 5:52 PM
19	please leave hollinshead alone. I've lived across the street for years and never seen "conflicts"	5/3/2024 1:46 PM
20	Please don't fence in the dog park. Part of what makes the park nice and unique now is the open feel. A fence would only serve to concentrate dog traffic and lead to the loss of a lot of what makes this park special. A fence will focus dog traffic; every fenced in dog park I have ever been to has been a dusty or muddy mess because the dog traffic is concentrated and	5/2/2024 6:12 PM

Hollinshead Park Improvement Project Kick-Off Survey

leads to the loss of ground cover. Moreover, I believe the lack of fence currently ensures that only attentive owners with well trained dogs bring their dogs to this park. Owners who's pets do not respond to voice commands tend to not use dog parks without fences. This makes the park better for the rest of the users.

21	This is the most beautiful park in Bend. It is the most well-maintained and wonderful setting. So much history here. All the staff I have ever encountered over the years is always so Friendly and happy to be working in such a wonderful place. Thank you for hello in the public the opportunity to submit our input!	4/29/2024 5:55 PM
22	I don't know how to address this issue but almost every time I run into an off-leash dog on the canal walk with an argumentative person. Maybe stress the importance for wildlife protection, I've seen a peregrine falcon up there many times in the early morning. Thanks for your time	4/29/2024 12:56 PM
23	Please don't ruin another special place.	4/28/2024 3:22 PM
24	Instead of enclosing the dogs, why not ENCLOSE the HUMANS? Most dog owners keep their dogs out of the enclosed barn area. Similarly, if the hill side grassy area was enclosed for humans only, people could go there to enjoy the park with friends without dogs around, while the rest of the park could continue to be dog friendly. This alternative way of opening the park to both dog owners and those without dogs might be a good way to resolve any conflict between them: it would preserve the unique dog friendly feel of the park that attracts dog owners from all over Bend, and its unique open space that invites everyone to enjoy the dogs and the trees, while enforcing a no dog zone for humans who like to sit in the grass and chat or read without a dog sniffing them out while the dog owner desperately shouts their dog's name in your ear, or worse (as in leave "it") to try to get their dogs off your space.	4/28/2024 2:00 PM
25	Not excited about the adding of fencing to enclose the dog park.	4/27/2024 12:12 PM
26	I wish the bench in the center of the dog area which is under a pondarosa tree would be moved to a different space. Ponderosa trees often drop gooey sap which can stick to a bench. I wish you would not enclose the dog park area. In my experience, once a space is enclosed it becomes difficult for a non dog owner to "justify" or be allowed to use the area as it is possible now (people can bring blanket out or have picnics at tables, or stroll through with their kids regardless of if they have a dog or not), and it limits the ability for everyone to take a walk around the park unhindered as I see so many do. Barriers would change the feel of the park. Many people chose to play with their dog outside the dog designated area on the quieter hill side and enclosing the designated dog area would not necessarily change that. So I, as a non dog owner would lose access to a very special part of the park without necessarily gaining any benefit from it. Besides, going to the park and enjoying watching the dogs without barriers in between us is one of the pleasures I draw from that park.	4/27/2024 11:42 AM
27	Dog park is the heart of the park.	4/27/2024 8:25 AM
28	I live the openness of the park. There are areas you can take your dog off leash that are secluded . Fencing it will take away that privacy . This park for what it offers right now is why I come to it . I do not live in the area and drive from the other side of town because it is a great off leash area. Please don't fence it in.	4/25/2024 10:21 PM
29	It saddens me to think that you are considering fencing this dog park thinking that it will make it safer. It will do the opposite. This is the best dog park in Bend because it isn't fenced. Not being enclosed keeps aggressive and not well behaved dogs away. I've lived in Bend for decades and this is by far the safest dog park for me and my dogs because of the lack of fencing. Please do not enclose this dog park!!!.	4/21/2024 7:16 PM
30	I am against enclosing the off leash dog park. Hollingshead is the only off leash park I take my dogs. I believe there is a self selection into who visits this kind of off leash park and the types of people who would start coming already have other options.	4/19/2024 8:16 AM
31	I think that enclosing the dog park is a mistake. There are plenty of enclosed off leash dog parks in Bend, and this is one off the few open off leash parks. Being away from major arterial streets but still in a nice community make this perfect for an off leash park, and the culture of owner responsibility is where I would like it. Please don't move forward with restricting the dog park to a smaller enclosed area.	4/19/2024 8:04 AM
32	PLEASE PLEASE PLEASE DO NOT ENCLOSE THE OFF-LEASH DOG AREA. It is the BEST thing about Hollinshead park - and what sets it apart from all the other BPRD parks. It would be very sad to see that go away and be limited to a smaller, enclosed area. I understand	4/19/2024 7:57 AM

Hollinshead Park Improvement Project Kick-Off Survey

concerns about safety, but in my years of going there I have never seen an issue with dogs/humans occur. People with ill-behaved dogs, for the most part, entirely avoid parks such as Hollinshead. Plus, because the area is quite large and for the most part blocked off by fences, obstacles, and trees, I've never been worried about my dog escaping or running away. Seeing the dogs get to play freely with each other (without having to go through gates) makes my day. Please do not take that away. All the other improvements sound wonderful, and I have no issue with those.

33	Please work with adjacent home owners to clearly mark private property boundaries and pathways. Can you make the two southern paths to Revere and Seward public walking access? Thanks	4/17/2024 10:08 PM
34	In general, the out of control dog situation forces us to leave this park in peak hours. Enclosing this area and asking people to observe the leash law is our greatest request.	4/15/2024 5:54 AM
35	Many of us who regularly use the park prefer that it's not fully enclosed. That way nobody will dogs that don't listen show up there and it creates a more calm environment than the other dog parks in the city.	4/14/2024 8:41 PM
36	Please keep the large footprint of the current off leash area and the grass in that area is important to keep maintained. Thank you	4/13/2024 9:40 PM
37	Increasingly, people seem to think the whole park is off-leash. If you could add better signing to make it clear where the off-leash area is and is NOT, that would be most appreciated!	4/13/2024 12:26 PM
38	I'm a master gardener and really enjoyed working in the waterside garden. I would love to see the garden expanded— we could embrace the city's desire for people to eliminate lawns and show people what their front yard could look like.	4/12/2024 5:23 PM
39	Friendly, serene little grass oasis. My favorite park to take my dog to on a hot summer day or snow day!	4/12/2024 4:47 PM
40	Please keep as is. The park is a wonderful place for folks to walk and enjoy their pets off leash. There are plenty of other green spaces in Bend for "people" to enjoy.	4/11/2024 11:37 PM
41	It's the best dog park in Bend, especially in summer. Thanks	4/11/2024 11:13 AM
42	We try to stick to the on lease area's but there are often dogs off leash that roam away from their owners. Our kids are on high alert and rarely enjoy the park with ease.	4/11/2024 10:04 AM
43	I don't currently have a dog, and I think the open off-leash area makes the park that much more unique. There are many other parks with dog enclosures or that do not allow pets. One could politely encourage users to enjoy those spaces, and keep Hollinshead from becoming a ubiquitous city park.	4/7/2024 10:24 AM
44	I personally would like to see Hollinshead stay open and unfenced as it is now. It's a rare place where people and their pets can coexist without chain link fences and leashes close to home. I am concerned that fencing off an off-leash area will degrade the space since so many people bring dogs to this park to play fetch. With the dogs concentrated in a smaller, fenced area, it could become a dusty dirt park like so many of the other off-leash areas in Bend. If the fenced area remains large, I would hope there would be a plan to do some rotational rehabilitation of the grass to keep the park covered in grass rather than becoming weeds and dirt. With the addition of the bathroom, I hope it wouldn't become a place for drug use and vandalism which has become more common at other public restrooms according to the Bend Parks and Rec 2023 news release.	4/6/2024 2:47 PM
45	Make things ADA accessible please	4/5/2024 12:13 PM
46	It would be nice to have a little more light on the far side of the park (opposite of parking lot). It can get very dark on that side in the winter very early. Many many people access the dog park on the far NW corner by the garden shed. It would be nice to keep an access point there so that walkers do not have to cross through the parking lot to access the dog park.	4/4/2024 5:23 PM
47	As someone who lives in the neighborhood I value being able to walk down the hill from Revere with my dogs to the dog park. There's a great community of locals who use the dog park and I appreciate how free flowing it is. I have concerns with that being lost once the park is fenced. I'm a regular user of this park and have seen very little conflict with users.	4/4/2024 2:21 PM
48	Do not enclose the dog park. We have plenty of fenced dog parks and doing so will destroy the	4/3/2024 2:18 PM

Hollinshead Park Improvement Project Kick-Off Survey

	parks unique character.	
49	Don't fence the park!	4/3/2024 1:51 PM
50	Please do not enclose the dog off leash area. It will just bring bad dog owners and their mis behaved dogs.	4/1/2024 1:14 PM
51	Don't fence the dog park. It weeds out the riffraff and if I wanted a fenced area there are plenty of other options for dog users and others who don't want to interact with off leash dogs. I know you'll don't really plan based on user feedback, even this survey doesn't offer space for criticism of your plan	3/28/2024 9:48 AM
52	Please don't fence the off-leash dog area. Not having more fences retains this park's charm	3/27/2024 6:03 PM
53	Picnic areas.	3/27/2024 1:27 PM
54	Nope	3/27/2024 9:17 AM
55	Please consider a covered outdoor sports/basketball court. I don't believe any of our parks have one.	3/27/2024 8:14 AM
56	I really appreciate that there's grass area for the dogs at Hollinshead. I hope there will be multiple entrances to the off leash area, and also hope that off leash can encompass as much space as possible and not be separated into small sections.	3/27/2024 7:20 AM
57	I hope the off leash area stays as large as the park is now. Dogs favorite place for socializing	3/25/2024 10:11 PM
58	Love the grass, trees, water for myself and my dog. It's the only "cool" park in the heat of the summer. It's also very accessible unlike the river parks, or big sky when summer is in full swing.	3/23/2024 11:01 AM
59	This is one of the few dog parks that is not enclosed. I can come here as my dog feels safe not being enclosed in a fenced area with other dogs. The space allows for a more spread out environment amongst the dogs and users. A restroom would be great!	3/22/2024 3:44 PM
60	Hollinshead is one of the calmest dog parks in bend - I would urge you to leave it as is in terms of not enclosing the dog park. There are a lot of fenced dog parks close enough for those who need it to access. (Pine, big sky, riverbend, ponderosa) every direction. I ride my bike here and it is really nice to be able to let my dog off lease to run in the grass without having to get off my bike and go through a double fence..	3/22/2024 7:25 AM
61	The first time I came here I didn't even realize it was a dog park because it wasn't covered in fences, and the grass wasn't rundown from overuse by dogs. Please don't enclose!	3/21/2024 3:09 PM
62	Enclosing the dog park will lessen the experience and encourage more untrained dogs. Please don't!	3/21/2024 7:58 AM
63	Please don't enclose the off leash dog area as it will end up killing the grass in hollinshead. Having no fence self regulates the quality of dogs and patrons who attend hollinshead, making it a crowd for responsible dog owners and responsible dogs. This is a stark contrast to the type of dogs that attend big sky and pine nursery	3/19/2024 5:54 PM
64	You need to make changes beneficial to the dogs, not people. Hundreds of people come here every day. Don't you dare take away our dogs place for swimming.	3/19/2024 5:04 PM
65	Please don't enclose, fence and gate this park! It will destroy the natural beauty of the space and its unique, neighborhood vibe. I've had the LEAST conflicts at this dog park — most dogs are well-behaved and under voice command, there's no crowding with over-excited dogs at gates. If conflicts exist with visitors to the Hollinshead event spaces, I would encourage the funds be used in a campaign to encourage leash use and common sense dog ownership.	3/19/2024 1:27 PM
66	I think adding a fence will be an eye sore and take some magic away from the park	3/19/2024 9:20 AM
67	Needs better drainage.	3/18/2024 9:12 PM
68	Please do not enclose the dog park.	3/18/2024 7:30 PM
69	No fence needed, a fence will change the flow and aesthetic of the park.	3/18/2024 1:13 PM
70	Dog waste on the field and around the park is a big concern.	3/18/2024 10:34 AM
71	Would be nice to make the uphill section at the back of the park a little more user friendly	3/16/2024 6:05 PM

Hollinshead Park Improvement Project Kick-Off Survey

72	Mabey include part of the Irrigation ditch in the off leash area. So many people take their dogs up to play in the water, or build a retention pond for doggo swimming.	3/16/2024 6:00 PM
73	It's a beautiful park but dogs aren't safe without a fenced area and the parking isn't enough if an event is going on!	3/16/2024 4:27 PM
74	I'm curious if instead of fencing it in, you expand the park off leash boundaries to include the canal up top. Most people go up there. It would potentially create less conflict if the "rule" was it's off leash through out the whole park. It's the only park I know of with swimming access for dogs that is somewhat ada accessible. If instead of in closing the park and taking away the beauty of the openness, expand the off leash perimeter. Thats my vote.	3/16/2024 9:56 AM
75	Please no fence around the off leash area...it would change the whole feel of the park.	3/15/2024 7:56 PM
76	The off leash open dog park creates a unique experience. We are close, but will not use a fenced dog area	3/15/2024 7:56 PM
77	If fence is needed make it blend in and encompass as large an area as possible	3/15/2024 2:45 PM
78	Bathroom locked at night to limit illicit activities.	3/15/2024 1:21 PM
79	We love it here!	3/15/2024 12:49 PM
80	Dog loves the lava pile. Please regrass areas that are muddy in winter and dusty in late summer. This is this BEST dog park in town, bar none, mostly bc it is grassy and shady in summer. THANK YOU!	3/15/2024 7:33 AM
81	Wish everyone would honor parking markings. Some people block the route around that monster tree.	3/14/2024 7:34 PM
82	I would prefer an open park. not fenced	3/14/2024 4:54 PM
83	I like that the dog park is NOT fenced in. It feels more natural and community-oriented.	3/14/2024 4:25 PM
84	Keep it wild feeling. We don't want fancy. More fruit trees!	3/14/2024 4:19 PM
85	Having an unfenced dog park significantly reduces the number of untrained/unmanageable dogs that come here. It is so special and unique in this town filled with so many other parks. Please, please, no fences.	3/14/2024 4:17 PM
86	It's a beautiful park. Lots of retirees take their dogs for social gatherings	3/14/2024 11:10 AM
87	it would be nice for the off leash area to have a designated perimeter. glad you are thinking of fencing it in!	3/14/2024 9:01 AM
88	I would not be in favor of any tree removal to facilitate changes re: parking although I agree there is probably a way to improve the parking flow.	3/14/2024 8:41 AM
89	Dont waste money "improving something that is already fine when other parks and infrastructure slip in to disrepair.	3/14/2024 5:49 AM
90	Awesome u are keeping the dog park. Sorry too many people don't get it and make the fencing expense necessary. Please put a gate to allow connection to the hillside trail in the se corner.	3/13/2024 8:57 PM
91	We love, love, love this park and use it every day that I'm not at work. I feel like it is one of many reasons living in this neighborhood is so valuable. Its open/non enclosed dog area makes it a special park. I am curious about the fencing specs and where the fences would be, and how much they would potentially change the feel of the park, make it feel smaller. Also, as a homeowner that borders the canal road behind the park, I'd love some better fencing/barriers/signage on the very outer boundaries of the park that could reduce trespassing whether inadvertent or not.	3/13/2024 5:36 PM
92	Fencing the dog park is a plus for use of the rest of the park. Permanent restroom, yay!!	3/13/2024 5:19 PM
93	I'd love to support helping the grass stay nice but also wondering what the dogs like so much about the fertilizer? I frequently see dogs eat the grass.	3/13/2024 3:26 PM
94	-	3/13/2024 1:30 PM
95	It's not a safe space anymore b/c some people do not control their dogs at all, I wish this was NOT even a dog park, not even fenced, it's obnoxious to hear the dogs in the neighborhood	3/13/2024 12:52 PM

Hollinshead Park Improvement Project Kick-Off Survey

even.

96	I sometimes use temp bathroom on off hours (early morning between 5-6). Would a permanent bathroom be locked during off hours?	3/13/2024 12:47 PM
97	Continuing to keep it clean, free of trash and graffiti and camping in the rock areas.	3/13/2024 12:15 PM
98	Love the grass area! Best dog park in Bend	3/13/2024 11:53 AM
99	The old house and the small barn where black smith and other maintenance activities once were performed seems like a living history project could be a good summer activity.	3/13/2024 10:46 AM
100	Don't like the idea of closed area for dogs. I have small dog and like walking the edge of park to stay away from aggressive dogs.	3/13/2024 9:25 AM
101	please try not to make the new fencing an ugly chain-link type. the park is so beautiful as it is and I am regretting this new development	3/13/2024 9:20 AM
102	Yes -- always yes -- to accessibility. But I do love the natural feel of the trails and hope that is carried forward.	3/13/2024 8:45 AM
103	A small natural playground would be so cool for this area! Even just a couple of swings :)	3/13/2024 8:36 AM
104	too many unleashed dogs running around entire park too much dog poop around the park	3/13/2024 8:10 AM
105	The unfenced dog park is a gem in our community. It would sad to see that change.	3/13/2024 8:05 AM
106	Enclosing the dog park and adding a permanent bathroom would be amazing additions to our neighborhood park. Enclosing the dog park would not only keep dogs safe from traffic, but ensure dogs don't interfere with events at the barn. For friends who have had events at the barn, both as catering vendors and having a wedding, parking could be substantially improved. Excited to see these improvements hopefully come to existence!	3/13/2024 1:20 AM
107	Please request the owner remove the trailer that is permanently parked on the easement on Jones.	3/12/2024 10:37 PM
108	I love that there isn't a fence. I have not seen any conflicts between dogs and people. It is the best dog park in Bend for all of the friendly people and dogs. Please don't make it like the Awbrey Res. dog park where you have to now leash your dog if you want to walk a full loop. It is the worst design I have seen for a trail system. Thank you.	3/12/2024 9:52 PM
109	Keep it dark at night! It is one of the few places in Bend with a dark sky. Any lighting needs to be dark sky friendly, please!	3/12/2024 6:49 PM
110	Thank you for your work! The accessibility upgrades and improved parking will be great.	3/11/2024 5:34 PM
111	What are the chances of a small kids play structure? Up away from the dog park if need be?	3/11/2024 2:15 PM
112	Thanks for your work to improve this park for all!	3/11/2024 8:39 AM
113	I would be devastated if you fenced in this dog park. This is the best dog park in Bend for the fact it is not fenced in. In my opinion it would ruin the whole feel of the park. I would like to see data on how you determine it would be "safer". There are plenty of fenced parks in this town. Don't change a good thing.	3/10/2024 8:51 PM
114	Concern with fenced in park. Currently most owners are responsible and trust their dogs because there is no fence. We live on the park and rarely hear fueds that escalate beyond a reasonable amount. While it's understandable about misuse outside of the current designated off leash area, it's of my opinion that a fenced in area could lead to more irresponsible owners to bring their dogs to the park. We like the fact that responsible grown adults are most using this park.	3/10/2024 8:43 PM
115	Like I said, we really love it how it is. Additional bathroom would be nice but we really don't have issues with parking or anything else. Pretty much all the owners and dogs that go there are all really friendly	3/10/2024 12:49 PM
116	Things get super torn up and muddy in the dog park, it would be nicer to have a well drained surface around the perimeter of the dog park. Hopefully ADA-accessible doesn't necessarily mean paved; we've got too much impervious surface in our city as it is.	3/10/2024 11:46 AM
117	I'm concerned that enclosing the dog park will greatly reduce the viability of the grass and	3/7/2024 2:57 PM

Hollinshead Park Improvement Project Kick-Off Survey

trees in that area, and create a disparity in the park, whereas now it flows so well together. I'd think conflict involving dogs could be reduced through better signage and education, and better definition of where the off leash area starts- the current posts are very oddly located.

118	We need more space for teens. Basketball courts?	3/7/2024 2:38 PM
119	All the features of Hollinshead Park, existing and future, would be better if the dog situation there can improve.	3/7/2024 10:29 AM
120	A new neighbor mentioned they e seen people sleeping in the park. We are further away from 12 th and not seen it lately. Just a question, would the bathrooms be locked after a certain time to maybe not encourage this? Maybe keep an outhouse further down the field? Also, maybe some play equipment for kids in a section w farm theme? Not alot for kids Cept running w the dogs at present or playing in rocks at far end of field or in the tall rocks on south edge. Several groups have made stick structures up there or tried to dam the canal. Also clear out the two sledding hills for big rocks or obstacles.	3/4/2024 5:01 PM
121	Please do not add a fence around the park. Also I know myself and many dog park users love the fact that there is water for our pups to access at the canal in the summer. I've lived next to Hollinshead for 7 years now. The dogs that visit this park tend to be much better behaved than other dog parks and I think it's because there isn't a fence (so dogs need decent recall). I might be completely biased though but it just seems like it's the best. Please don't alter it too much. Sometimes improvements aren't actually better.	3/4/2024 2:28 PM
122	Please don't make the dog park small if you must fence it, the biggest appeal is how large and shady it is. I would prefer it to stay unfenced	3/3/2024 5:01 PM
123	The more natural, "wild" areas near the canal are wonderful. The unleashed dogs are a major issue and our family is really glad a reasonable area will be fenced, so the rest of the park can be enjoyed!	3/3/2024 4:17 PM
124	I've used this park regularly for years with my own dog and visitors' dogs. My partner owns a house that shares a property line with the park. We LOVE the unfenced dog park. We welcome dogs in our yard. Everyone is so friendly and the dogs are great. This park is truly the heart of our neighborhood. I've never seen a serious issue that would warrant fencing the dog area and it's such a shame to think that the only unfenced off leash area in the city will be lost. Fencing will almost certainly turn this incredible mixed use park into the same muddy mess that every other fenced dog park seems to be. Plus, fenced dog parks seem to welcome the most poorly trained dogs because their owners feel safe letting them off leash in a confined area, but it also means poorly behaved dogs and increased anxiety, aggression, and conflict. If you worked with the community in 2010 (!) to determine what people want, don't you think that's sorely outdated information? Please please don't fence our beloved park. It's the best part of this neighborhood.	3/2/2024 7:03 PM
125	We have loved the unfenced off leash area for years and hope the new fencing will be esthetically pleasing and somehow unobtrusive.	3/2/2024 4:04 PM
126	We wish a subtle kids play structure was also included.	3/2/2024 8:10 AM
127	I am disappointed that you will be fencing the dog park. I have gone to city dog parks for 20 years and believe that Hollinshead has the best behaved dogs and owners because of it being unfenced. Dogs there need to be responsive to 'recall', so those with poorly trained dogs go elsewhere. I think fencing it will make it more crowded, have more unsafe dog interactions, and will increase the muddiness at the top of the hill for most of the winter. Over time, I have seen more and more people with their dogs off-leash on the hill above the parking lot. I have never understood why Bend Parks and Rec didn't add more signs prohibiting that or cited owners instead of 'educating' them (teaching them to read English and understand what 'Dogs on leash' means?!). What Bend Parks and Rec needed to do was enforce their rules to 'Increase park user safety and minimize conflicts'. What will keep people from continuing to allow their dogs off-leash in the restricted areas?	3/1/2024 7:08 AM
128	Please keep all the trees and natural areas! They are what make the park so special. My family has loved playing in the natural areas for 15 years. Please don't pave it all or make it all grass. I also prefer the open off leash area. It is much more dispersed and less prone to overuse (dust bowls) than other dog parks.	2/29/2024 8:12 PM
129	I am very thankful you are fencing the dog park. Every time I go, dogs approach me outside of the designated off leash area. People seem to believe the entire park is an off leash area.	2/29/2024 8:50 AM

Hollinshead Park Improvement Project Kick-Off Survey

Even if their dog is well behaved and non-aggressive, they have to remember that not all people want to be around dogs or have their visit to the park affected by a dog. And some people may be allergic or have a fear of dogs based on past experiences or trauma with a dog. Additionally, not all dogs are non-aggressive, and their friendly off leash dog running up to that dog who is on leash could cause a big problem if the leashed dog feels threatened. That prevents people like me from being able to walk in a park because other people aren't following the rules. Lastly, sometimes dogs off leash run across someone's pathway, causing a collision or making them trip or fall, especially someone with mobility issues. Everyone deserves to be able to visit any park in our city without having their time and space intruded upon. Dogs are not the priority. People are.

130	Just hoping the off-leash area doesn't become downsized too much.	2/28/2024 5:20 PM
131	Please do not fence in the small portion of "off-leash area" that is currently signed. This will just create a small park area that will be crammed with people and dogs and not at all the same user experience. Better yet, do not fence any off-leash area. Why let a few bad apples ruin park that everybody else enjoys?	2/27/2024 7:13 PM
132	Expanding the off leash dog area	2/27/2024 5:55 PM
133	The current off leash area can be extremely stressful. Without fences, dogs have taken over the entire park and created an unwelcoming environment for other users. Also, love the ginkgo	2/27/2024 10:37 AM
134	Hollinshead is one of the best dog parks in town. With four non-dog parks nearby - Orchard, Goodrich Pasture, Al Moody, and Stover - I hope Bend Parks and Rec can find a way to preserve the truly amazing dog park qualities.	2/26/2024 6:10 PM
135	I don't know how you're going to convince dog owners to leash their pets along the upper part of the park (near the canal), but I fully support any efforts to that end.	2/25/2024 7:07 AM
136	I am very concerned that the fenced off-leash area will concentrate both foot and dog traffic to extent that the enclosed area will become trampled and the beautiful grass/green space will be lost there. Now people walk with their dogs in a dispersed, park wide use pattern so that all the grass is preserved and is accessible. I also am concerned that with a new public restroom, there will be more attempts for people to camp out along the area streets or in the parking lot of the park. Will the parking lot gate be employed at night? Thank you.	2/23/2024 7:00 PM
137	I welcome many of the changes being proposed here(bathrooms are an obvious need, ADA path/elevator(?) is excellent), but I'm staunchly against putting up an unnecessary fence on the dog park that I don't think was requested or desired by the community. Hollinshead is one of the best dog parks in the city, specifically because it HASN'T become a urine-soaked field of dust thanks to the freedom people+dogs have to roam about the park freely and actively avoid putting wear on muddy patches, rather than tearing up a limited, caged portion of the park until it's totally destroyed, disgusting, and unable to grow grass; like the Riverbend Dog Park. It's a very-Bend feeling to go to a dog park where people are personally responsible for managing their pets well enough that they don't cause "conflict" with other park users and/or leave the park area. Putting up an ugly chain link fence will completely change the character of a park built on a wide open space that has the appeal of open country within the city while destroying the green grass within the dog area. The Barn as a community event space is great, but I don't think money spent on keeping up the additional structures and/or the history is well spent. Effectively nobody using the park gets anything out of the old house that is closed 90% of the time, and absolutely nobody is going to use a "history walk". Let somebody put a coffee shop in it and pay to keep up the physical plant, like Woods Coffee in Bellingham, and it could be an amazing community space that would bring the neighborhood together, but it's a waste of money right now.	2/23/2024 2:41 PM
138	Wish there was a kid play area	2/23/2024 11:41 AM
139	Hollinshead is unique in that it is one of the few dog parks without an enclosed area. Let's keep it that way!	2/23/2024 11:30 AM
140	We all love it as it is. Some of us are nervous about the changes to the dog park.	2/23/2024 11:30 AM

Hollinshead Project Public Comments (via website and email) Pre-Design Release

1/22/2024

I didn't realize until today that Hollinshead Park was due for improvements. I read through what was online, and I wanted to say thank you for this bullet point:

Enclosing the off leash area to increase park-user safety and reduce conflicts.

I like to walk and run in my neighborhood, including this park, and dog owners are unaware of which parts of the park are off-leash and which parts are on-leash. The signs...are not noticed?

Long rant that you don't have to read: I have been jumped on by dirty and wet dogs, followed and chased, forced to slow down or stop, etc., in Hollinshead Park, by dogs that were not under owner control. When I've reacted to these situations, I've been yelled at by owners. While I have never been bit at Hollinshead, I wouldn't be surprised if others have been. (I was bit at another Bend park, so I'm super cautious and nervous.) When I am in the off-leash area I 100% expect the dogs to have full rein and would never complain about that area (I love to look at the community gardens which take me into that area from time to time).

Anyways, thank you, thank you, thank you. I look forward to the improvements!!

1/30/2024

KUDOS TO BPRD FOR TAKING ON THIS PROJECT!!!!

Hollinshead is an amazing park. Unfortunately, the "off leash dog area" has taken over the entire park. As a father of two young children, I have stopped walking through the park because on multiple occasions we have had off-leash dogs (much bigger than my kids) run over and start barking and/or jumping on us. This was walking either on the main path (where it is not clear whether dogs are allowed to be off-leash) or on the hiking trail, where it is clearly marked that dogs must be on leash (but many dog owners ignore the signage). This is ultimately frustrating and unfair to those of us who wish to use the park and not be mobbed by other peoples' pets. I urge BPRD to fence off an off-leash area in the orchard within the park, and preserve the other areas for the many other users who wish to enjoy the park without worrying about getting jumped on, barked at, or stepping in doggy-doo that someone neglected to clean up. Maintaining clear boundaries for the off-leash area will make it easier for dog-owners to follow the rules, and for the City to avoid liability issues when dog/dog or dog/person issues arise.

2/1/2024

Hi Ian,

Since it's top of mind, this is what I would propose for the off-leash dog area boundary (see screenshot below) -- basically the full orchard area, but not including the barn or the rock outcropping near the eastern entrance. This area would be fairly easy to fence off and aligns with many of the natural features/barriers within the park.

The heavily shaded area in the southwest corner should be reserved for people to enjoy without worrying about dogs running up to them.



2/3/2004

Hello Ian!

I live across Jones from Hollinshead Park and just became aware of the improvements that are intended for the park. It would help if there were some kind of bubble diagram giving patrons a sense of where these improvements are intended to be sited. I am totally supportive of a permanent restroom, ADA trails and a fenced dog park, but have some information about wildlife use that you may not be aware of.

There is a tree near the shed east of the homestead house that has hosted great horned owls and red-tailed hawks raising families. If you would like for us to show you where this is, we would be happy to. The point is that there are some wildlife features that would be disturbed by too much human/dog use if the fenced dog park is located too near the raptor trees. The present configuration appears to be a comfortable fit for both dogs and raptors.

Another issue that you may or may not know about is that if you want to restrict off-leash dog use to the fenced area, you will need some intensive retraining of the patrons using the park. Despite signs asking patrons to leash and clean up after their dogs, there is very little compliance- especially in the wilder portion of the park.

In your design drawings, it would be helpful to locate the trees that are on the property and those that will be removed. As you undoubtedly know, there were tree removal restrictions associated with the

sale of the property; neighbors are aware of those restrictions and it would be a good way to avoid issues with the neighbors that might slow down the progress of your project.

Another thought is that you might want to reach out to neighbors who use the park for sledding and snow boarding. There are a couple of signs that could be relocated that would make these activities safer. Location of dog park fences could also affect safety of these activities.

We love the park and are appreciative of the wonderful recreation and wildlife opportunities that it affords us in the neighborhood. We hope to work with you to make Hollinshead a park that works for all.

2/5/2024

As a resident in the neighborhood of Hollinshead Park, I'm very excited for the restroom and enclosed off leash area. With 2 young kids, I often come across dogs off leash in the canal area. Some of our dog encounters have left our children fearful of dogs, thus rendering the park not as easy to visit or enjoy. I would like to request signage for the nature trail side of the park to inform people that dogs are required to be on leash. With the high level of dog owner entitlement in Bend, I have concern that even with an enclosed area, folks will take the liberty to have their dogs off leash through the whole park.

2/6/2024

Hi Ian, a couple of notes:

- 1) main parking lot is often full esp. in summer months and always with any event.
- 2) secondary paved parking spaces at SW corner of park on Jones Rd, connected by sidewalk to larger lot, seems a logical area for expansion and ADA access for planned fenced off-leash dog area. It also would keep heaviest dog traffic away from Barn events (ie: weddings)). Area also has natural buffer so that off-leash fenced dog run would not be located immediately adjacent to private homes bordering park.
- 3) I am sure you have been notified of red tail hawk nest site (previous gray owl) in ponderosa on East side of historic home site/museum.
- 4) The hill side North of barn, just east of historic home/museum is a favorite neighborhood sledding spot when snow falls!

2/6/2024

We love this park so much as it is. It has a charm and natural quality unlike any dog park in town. I understand your desire/need to update the park with a bathroom and fence. But please consider leaving as much of the park itself as it is. If you need to enclose the off leash area, please consider using as much existing fencing and sq footage as possible. It would be a shame if the improvements negatively affected those that use the park the most.

2/9/2024

Hey guys it would be a GREAT improvement if we put a dog poo clean up section at the top of the park by the creek!!! Currently you have to walk well over 100yds to get a bag to pick it up.

Cheers

2/17/2024

Hi, Ian, could I please get a copy of the plan that was approved at the Dec 5 meeting? The plan on the website appears to only be the 2010 Master Plan, no 2023/24 updates.

2/20/2024

Great to hear these investments will be made. I am concerned the two old ponderosas the "twins" could be disturbed or removed when the parking area is renovated. What are the plans regarding these trees?

Second, the fencing of the dog park will be a very important feature to enable other uses of the rest of the park without the issue of dogs invading your picnic, etc. Improved picnic facilities should be included in the design of this upgrade-- perhaps a few more tables outside of the dog park? This park has lots of picnic potential, but, until now, the degraded lawn of the dogpark and the general dogginess of the entire park, limits that activity. We love dogs, don't get me wrong, but it will be nice to balance the dog-focus of this park with its other amenities-- the history, the garden, etc.

The other feature that would be most welcome is a micro commercial unit (MCU) that could be either a food truck or a built structure that would enable park users to buy a coffee or a snack when visiting. Orchard Neighborhood residents have expressed their interest in having more small scale commercial amenities within their neighborhoods. Hollinshead parking lot could be redesigned with this in mind. If current BPRD rules don't allow commercial operations, they should be revised to reflect current resident priorities.

2/28/2024

If you must fence in the off-leash area, please do not make just a small muddy area that will ruin the feel of the park. Including some of the large natural hillside area in the fenced area would be great!

Thanks!

3/9/2024

We use this area for walking frequently and live within 1/2 mile. Love the area, but it is very frustrating that many dog owners leave their dogs off leash and roaming outside the designated dog area. Many instances of dog droppings not being picked up as well. Adding a fenced dog area will help, ;but enforcement/fines are needed so people will keep animals leashed outside of designated dog area. It would be nice to have a walking area that would encompass the entire area (not really any paths along the northern area (outside the dog play area and community garden, Top priority would be adding a pickleball courts at this site.

3/11/2024

Please,

I write to express my strong opinion that the off-leash area in Hollinshead Park should remain unfenced. I own a home on Shepard Road, very near to the park, and one of the primary reasons we bought where we did and left NWX is the OLA being unfenced compared to the fenced area at Discovery Park. I use the park with my dog at least once a day, and often twice a day.

I consider the unfenced nature of the dog park to be a major and significant advantage to the neighborhood, and I believe that fencing the area will adversely affect my property values--in part because it will make the park less

accessible, less open in aesthetic and feeling, and have multiple adverse effects on safety of humans and dogs. I believe these things with such sincerity that I am willing to pursue any legal recourse to stop the fences from going up.

Below, I list multiple reasons for my opinion, and I ask you to note that the list below rebuts each of the points relayed in the FAQ item about the fencing of the OLA.

- 1.) There is no NEED for the fence. The only thing fencing will certainly accomplish that could be construed as a benefit is keeping dogs slightly farther from the barn area than they can get at present. Critically, this is unlikely to stop dogs from interacting with barn-area renters, unless the fence were to block both sound from and sight of the barn, which is impossible--especially without disrupting the park's aesthetic.
- 2.) Creating a fence decreases accessibility of the park. It does this by requiring manipulation of gates--which is often challenging for people with mobility and dexterity issues like I have due to the fact that I live with Parkinson's disease. Accessibility is also made more difficult insofar as limiting access points to the area creates congestion and increases opportunities for dog altercations near access points. Dogs frequently act aggressively toward one another at gates, and I have NEVER seen aggression at an unfenced entry point in any dog park I have ever been to.
- 3.) Moreover, fencing the OLA area will further limit accessibility for those who come to the park for reasons other than to recreate with dog(s), and it will do so while forcing them to interact with a convergence point where dogs will gather.
- 4.) Critically, I have seen far more dog-to-dog and dog-to-human physical altercations in every fenced park I have been to in the city than in the two primary unfenced areas I have frequented in this area, Good Dog and Hollinshead. The simple truth is that many dogs react badly to enclosed environments, and creating corners for dogs and people to become stuck in is a recipe for fights and, ultimately, injury. If the fence goes up and my submissive animal is injured, I will consider all bills to be the responsibility of BPRD.
- 5.) Fences require maintenance. Creating a new recurring cost is fiscally foolhardy when there is no need for a fence.
- 6.) There is no fence that can be run that will exist synergistically with the natural aesthetic of the park.
- 7.) The people who wish to use the canal area that is outside the OLA with their dogs will continue to do so, unless perhaps there are citations given consistently over a long period of time. Fencing will not mitigate this conflict; it will only put those who don't use the canal and their dogs at greater risk of altercations in the fenced area.
- 8.) Fencing will have no effect on a dog's behavior relative to having poor recall. In fact, I have seen dogs bust out of the gate area at fenced parks and run off in ways I have never seen a dog "escape" from Hollinshead,

I believe fencing the area is a short-sighted and irresponsible proposal. The fence project should not go forward.

Thank you for your consideration.

3/13/2024

Hello,

I am asking that you please do not fence in this beautiful park. I am at this park nearly every day, and the way it is now with its open space and easy to come and go walking areas for pedestrians and dog owners alike is a huge part of what makes it special. Fencing it in will not only make it uglier, it will also interrupt the natural feel of the park as it is,

Thank you

3/13/2024

I think it would be great for fencing around the dog park to protect our dogs!

3/13/2024

I'd prefer no fencing of the off leash area. My little dog and I use the park frequently and have never seen a conflict. The park is a beautiful place and I'm afraid it will lose its wonderful sense of place and history with fencing. My sense is that people with out of control dogs go to other fenced parks. It's a good crowd at Hollinshead.

3/13/2024

As a permanent resident in the Orchard district I am looking forward to the improvement project of Hollinshead park. It would be wonderful to preserve its history and restore the grounds and structures.

The negative impact on the park of off leash dogs is huge, not only is it a safety issue for people, the environmental impact is significant. The dog feces throughout the park including along the wooded section on the south edge is a serious issue. Hollinshead is not well suited for a dog park. It could be a lovely well landscaped park that is safe and clean for our tax paying residents and visitors. Encountering dogs is often unsafe and frightening for many people, seniors and small children often cannot manage an encounter with a dog or group of dogs. I would like as a resident to feel safe and comfortable walking through my local park. I hope the final plan will take into consideration the preservation of Hollinshead history and support Hollinshead as a park for the people.

Thank you

3/14/2024

These park improvements sound good. They will improve the user experience for all! My family would also be very interested in a natural playground or a playground aimed at the many older, elementary aged kids, living in this neighborhood. As a resident of the neighborhood, I would also like to comment on making the community garden at Hollinshead for the community living near Hollinshead. Currently, people drive (often daily in the summer) from NWX, Awbrey Butte, and even much further field to utilize this wonderful space. Unfortunately, it doesn't leave space for the neighbors who would like to be able to walk to their community garden space grow their vegetables and meet other neighbors. Traditionally, community garden spaces are for the adjacent community as they promote meeting and connecting in addition to growing a garden. Cut down on the gas output, and foster biking, walking and talking with neighbors ! Thank you for your consideration :)

3/14/2024

I was thrilled to hear about park enclosure. I hope this means fencing in the main large off leash dog area. I never understood how an unfenced park could be an off leash area. Dogs have run out of the area and into the street, endangering both dogs and humans driving cars.

I was surprised to see that this won't be done for 2 years. It would make sense to get it fenced right away, for everybody's safety and then add the luxury items like a bathroom and more functional paths and parking. Fencing is a simple task, let's not delay it.

Thank you.

3/15/2024

The website mentions parking reconfiguration but nothing about the parking lot is in the 2010 master plan. Please do not pave more of the park for parking lot. The lot underutilized as it is outside of large events at the barn. There is plenty of street parking in the neighborhood for these events.

I like to use the park as a pleasant but direct way to move E-W in the neighborhood when walking, or biking for recreation or short errands. Completing the path from the parking lot to the barn all the way through the park would be wonderful. It does not need to be paved, just graded and wider. More importantly it would be wonderful to eliminate/reduce the smaller E-W portion of the parking lot that is a continuation of this path. I have many conflicts with cars trying to enter/exit the park as a pedestrian with stroller or biking with my toddler.

3/25/2024

A problem endemic to Bend parks (which is frankly embarrassing)... There is absolutely zero bike parking. Whatever other improvements you make, please add four "inverted U" bike racks. I always feel bad locking my bike to the handicap parking sign.

4/17/2024

Hello

Why do you need to fence the dog area? That seems like an unnecessary expense. I haven't ever seen an issue-not having a fence.

What documented issues have you had?

Sometimes people have unruly dogs (or is it unruly owners?), but a fence doesn't solve that.

5/1/2024

As a local resident of Bend and within a 1/2 mile of HH park we value our access to this wonderful space.

Enclosing the off leash area will result in

- degradation of the grass area
- more dust
- impeding views from the fence
- extended construction time, cost, and noise
- irresponsible dog owners relying on the fence

Dog owners already have numerous choices of enclosed areas. Please allow responsible dog owners the option to use the park as it now.

5/10/2024

We have been using hollinshead dog park regularly for 4 years and have never seen or had conflict between non dog park users. Dogs seem primarily in the dog zone. If you fence it, it will attract less trained dogs. I've found much friendlier and better trained dogs at this park because it isn't fenced and non trained dogs don't come here compared to fence parks in town.

5/10/2024

Hi. Looked at the link and it doesn't provide any more information that was on the original questionnaire you sent out.

What have you learned from the survey? With such extreme amounts of my tax money being spent on parks I would like to know what items are actually being considered. Where is the written plan?

For example, the kiosks are a luxury item and therefore don't add functionality to park users. Are you planning park upgrades using existing tax dollars? Or are you planning to increase our taxes to fund the project? I don't think people would vote to increase their taxes with such extravagant items at a time when people are strapped to find enough money to pay their inflating taxes, water bills, electric bills, gasoline and food.

As tax payers we are making choices in our lives and not spending recklessly on things we don't need - because we can't afford to. I hope Parks and Rec is also being responsible and not just emptying the coffers.

Thank you for your time. I look forward to hearing from you and seeing the budget that breaks down the price of each of the items you will be discussing.

5/13/2024

Please leave the park as it is. I have lived in this area for 67 years We have enough parks that are fancy and have made some parks look not like their originality. This park should not be changed. I knew the Hollinheads, they would not want this. You already have changed it and did not follow thru you tore down a building years ago. We were told that it was to be rebuilt. It was not. The city was given this land to keep it the way it was as much as possible. This park is used mostly by the community in this small area. there is need to change it not everything has to change Bend was a nice town look at the crime now and there will be crime at this park. Permanent bathrooms are hit with crime They took out Stover park because of the crime. Keep this park the way it is.. If people want a fancy park there are plenty to choose from in Bend. Keep this park simple and beautiful. Thank you

5/13/2024

Please do not enclosed the dog off lease area. fencing will reduce the open space flow aesthetic of the park.

5/14/2024

I don't like the idea of enclosing the off leash area with a fence. I do not use the area for dogs but I walk through the park and I appreciate that there is no fence boundary/zone like that.

5/17/2024

Total waste of money. It's only 16 acres. Permanent restroom is fine. Trails? Grass is just fine. It's not like it's Shevlin Park.

5/18/2024

Updates to the park, especially a well maintained permanent bathroom sounds good. However, I do not like the fencing. I am in favor of keeping it open
What kind of conflicts with the open areas have you had?

5/20/2024

1. Please keep our beautiful dog park as is! Many folks in this neighborhood rely on the walking of their pets for both mental and physical health daily.
2. Would love to see the west end and east entrances of the park to have a straight fence to avoid dogs running into the road on Jones and 12th. Yay for dogs! Allow dogs up at the canal. Please do not fence dog perimeter!
3. Please reduce the noise during weddings. The bass until 10:00 pm is very annoying to the homes along the park. Bass permeates into our homes. No pavement path. Crushed granite?
4. A path within the off-leash park would be nice. A bigger area for dogs would be great. The park is nice already, we hope you can do more.
5. Would love to see a path inside the dog park boundary. Grass gets muddy/soggy. Thanks!
6. Need walking trail along the inside of the park for the dog owners to walk on. Or move paved trail inside park so ADA people with dogs can visit the park.
7. Restore native area with non-flammable fire-wise plants to protect the park's nearby homes.
8. I don't think the interpretive signs add value - save the \$60k of our money.
9. Like everything!! Approved!
10. Like the fenced in area for dogs - like the interpretive addition for the history
11. Would like to see additional parking and wondering why you couldn't put the perimeter trail inside the (dog?) park for handicapped.
12. It's a lot of money put out for dogs.... The park is so beautiful and historic. Would love to prioritize it for people rather than pets.
13. 1. Thanks for fencing the off-leash area. How to keep dogs/people form the grass around lawn?
2. The music noise - how to keep decibels down? Put "no outside speakers" back into the rental contract and enforce. 3. Park Stewards please!
14. I am so mad that you are putting a path through the grassy area on the hill above the parking lot. More people may walk/sit in that section of the park than before and it breaks the whole feel of that space for those who like grass. It was the only place I would sit/rest outside the dog area.

15. I still have concerns that there are no likely future plans yet for “rehabbing” fenced in area for dogs. Should the sod/grass become damaged by heavy use. We need that option to sustain this valuable green space.
16. 1. Add two picnic tables to interpretive walk (to match the two in dog park). 2. Add bike parking at the barn, about 4 hoops like entry. 3. I like the new fence will match old and be a full surround.
17. 1. Very much in favor of fencing OLA. Whenever I walk through the park, I find dogs who can't read signs 😊. 2. Please put more bike parking near the barn entrance.
18. Great project! Excited for the changes and improvements.
19. We'd prefer the park to remain as it is. The permanent restroom would be good but the park is beloved as a dog park because of it's current nature.
20. I was opposed to making Hollinshead a dog park 15 years ago because I feared it would become a fenced dog park and the original purpose and character of the park would change. I was assured that the fence would not be built. Now it appears my original fear may be coming true. A fence would make Hollinshead an exclusive dog park. Dogs will still use the fenced and unfenced portions. Those of us who don't have dogs will reduce our use of the park, which has been important to our neighborhood. If a fence is built it needs at least 3 access points (one west of barn, 2 east of a barn where trails enter).
21. Please add more entrance points to the dog park to reduce conflict entry.
22. I'm very sad to see the south hillside w/ canal to not be improved. It's the most beautiful part of the park. I don't think the trail/path around dog park will be that used. The south trail on the hill is currently severely over used and abused by off leash dogs. Maybe 10-20% are leashed. The running free dogs are eroding canal a vegetation, [reducing/lowering] wildlife that used to reside.

Hollinshead Project Public Comments (via website and email) Post-Design Release

5/20/2024

Please no chain link fencing for the OLA, something in-line with the current aesthetic of the park. More than two entry points to the OLA would be great - one on all four sides (North, South, East, West) would be the most preferable. Please restrict amplified music to indoors at the barn. Thanks!

5/20/2024

Hello Ian,

I met you at the open house today and you gave me {the Natural Resources Manager's} contact info. I left and came back to compliment you on the new design but by then you were surrounded. So let me say that you've done a great job on the new layout and design, a nice addition to the park system.

5/20/2024

I am strongly in favor of fencing in the OLA. I have not been bitten in this park, but I have had several negative interactions with jumping, growling, and aggressive dogs. Scratches, mud on my clothes, and just anxiety inducing. I would like to use the park and not be afraid of irresponsible dog owners. And not personal experience—but my neighbor can't bring his dog to Hollinshead as it is nervous around other dogs and he can't walk her in the on-leash areas, safely.

5/20/2024

The proposed plan makes a lot of sense. It preserves the off-leash area while also ensuring that other patrons can also use the park without having dogs jump on them. The rec path would be a great option for kids to ride their bikes.

5/20/2024

I like the proposed improvement of a permanent bathroom, ADA compliance, but do not want to see the fencing. The open space is part of the neighborhood charm. I have seen no reason for fenced area, and I have been bringing my dog to the park for 20 years.

5/20/2024

Hello, I think the park should remain unfenced. It is what makes the park more of a neighborhood park rather than other dog parks in Bend. It keeps usage down and people and dogs that utilize the park are usually better behaved and owners pay more attention to their dogs. Please try to keep the park open and unfenced. --Thank you

5/21/2024

Olmsted said "A park is a work of art, designed to produce certain effects on the mind of men" The green grassy areas of Hollinshead park feel soothing to me who did not grow up with desert vegetation, and I wonder if the trail planned to go around the park has to go right through the only green grassy space dedicated to folks without dogs.

Instead of looping right through the grassy area, I wonder if the trail could go along the flat area around the homestead house and barn with sitting and tables facing the grass and thus allowing folks to enjoy the view of the grassy hillside in front of them and its varied trees, and have another easily accessible sitting and table spot at the top of the hill looking down, thus letting people enjoy the space both walking by or sitting without disturbing the integrity of the space as I know it. The garbage can near the top of the hill seemed placed in a way to be visible, and perhaps it does not need to stand out quite so much and be moved closer to the parking spot near the top. If you want an example of how a path (plus a bathroom) running through a grassy area with trees completely changes/fragments the feel of that grassy area, check out Sawyer park.

5/21/2024

Yay for a fenced in dog park! Coming to and from Hollinshead Barn, I have been inundated by dogs all to often and many are even jumpers. After a couple of replacements, I avoid high concentrations of dogs due to some of them not being well trained. Don't get me wrong - I LOVE dogs, but not jumping ones...
Thank you for such a great project.
(A real place to pee is great too....!)

5/22/2024

1. Provide new or updated entrance signage to include Hollinshead Water-wise Demonstration Garden and Community Garden
2. Consider water-wise/native plantings at interpretive stops. Possibly Master Gardeners can design and manage. Also consult with Master Gardeners on native plantings throughout rest of park.
3. Provide a lawn area near the Water-wise Demonstration Garden for community education events. Large enough for 4-5 10x10' canopies.
4. Provide signage to encourage owners to keep dogs on leash until they are inside the fenced area.

Note: Looked on website for maps/layouts that were displayed at the public meetings. Couldn't find them.

5/23/2024

I would like the dog park enclosed so that dogs off leash will only be in the enclosed area

5/24/2024

I like the plans for the changes at Hollinshead and have a couple of questions. How tall will the OLA fencing be and will there be more than 1 gate or entry area?
Are the pine trees in the parking lot being removed or staying? Will any lighting be added for visits after dark?
I apologize if these questions are answered in the plans. I may have missed them.
Thank you

5/25/2024

Hello!

Thanks for improving Hollinshead. My one request is that we maintain its dark skies. It is one of the few places in town where you can easily see the stars and use a telescope. The only problem right now is the glaring light on the west side of the barn. Please make sure that all lighting is Dark Sky Friendly!

5/28/2024

I have lived in the area of Hollinshead Park for over 30 years. This park has always been a very nice natural landscape setting. It is open, easy to walk around and through, and has enough features to make every visit unique and pleasant. The Barn is a nice addition, without being intrusive, and offers relatively low-key events to take place in this beautiful area.

When the off-leash area was first established, it was okay... and I sometimes let my dogs off leash there. Over time, I found that this area was being used more and more by people who do not live in the area. It felt less like a neighborhood park. It seemed the dog owners became more snobby and possessive of the location, and cliques developed. I no longer let any of my dogs off leash, but I continue to enjoy walking through the area with my leashed dogs. Walking on the access road, as well as through the grass/tree area from end to end, is a very nice and relaxing time. I also like to watch the garden and the native plant display.

I do not think it is necessary to do anything to Hollinshead Park that would take away from it being a lovely open park area.

I don't believe it is necessary to have restrooms- this isn't a park where people spend long periods of time. The portable restrooms should be sufficient. In addition to being more expensive to maintain once constructed, permanent restrooms may attract vandalism and other illegal activities.

My biggest concern is that the proposed fenced dog park area is way too large, and essentially precludes any other use of that whole area! I realize the dog use has gotten out of hand there and people seem to think the entire park is off-leash, so some fencing may be reasonable. Along with better signing, this would hopefully keep dogs in that specific area. But- I suggest that the fenced area be significantly reduced! Please consider relocating the fenced area only to the north side of the park, leaving the south half open as it now is.

I do not understand why the Park District feels it is necessary to convert a lovely walkable NEIGHBORHOOD park to a large fenced dog park which will encourage even more people to drive their pets here. A large fenced area essentially precludes any other use of that area. It's just not a good idea and is a slap in the face to those of us who actually live in the neighborhood.

Thank you for considering my comments.

5/29/2024

Thank you Ian,

Our meeting led me to go see what changes are planned for Sawyer's park. I love to sit in the grass overlooking the meadow and I was saddened to find that if I read the plan correctly, this part of the park is no longer included in the grassy area we will be able to use, instead the grassy area will extend over the area which is at present the parking lot. It's a bit of a shock. I had not expected that.

Given the pressure we all need to meet as a community to reduce our use of water, and remove lawns, ensuring that more people are enjoying the grass that we do surround ourselves with may be the best way to protect it long term. I am grateful that there will still be pockets of refuge away from the dogs in the park in a green peaceful setting.

5/29/2024

The fenced dog park area is going to be excellent!

Increasing accessibility is important for the community to enjoy the park. One concern I have is increasing the pervious/paved area in the park. I frequently enjoy running in the park and love the gravel pathway from the barn to the eastern exit of the park on Edgewood St. I am concerned that this will be paved as the perimeter loop and request alternative, pervious, materials be considered.

5/29/2024

Good evening. Just wanted to voice my opinion about the upgrades to the park. I live on viking ave and my back yard is the park. As a multi time a day user of the park for my 2 dogs I feel as though a lot of the upgrades are definitely needed such as the bathrooms and parking lot upgrades fencing for privacy for the barn just used it 2 weeks ago and had dogs wander in. I get it its a huge revenue stream..but as someone who can walk into the park via our(nonlockeable) gate into the park the new walking path on the north end concerns me in multiple ways. 1 I feel as though this adds a raised security risk since the new path will be what looks like 3 feet from my 5 ft tall fence that's been there since it was a cow pasture! With the proposed fence being on the opposite the trees line it creates an ally to all the home owners property lines that could cause privacy issues for us since 75 percent of the fences are chain link or see thru in some way with the added traffic of the loop all day and more than likely at night as well. Just as the neighbors on the south side currently have issues at the canal, The new walk way would be closer to my back door than the city side walk is to my front porch. Would much rather be able to say hello to all the dogs than to hundreds of more people in eye shot of my back window. Also it seems as though we would lose direct access with our 2 dogs to the very park we love to enjoy daily and probably have to construct a new fence prob 5k or more do to privacy issues also the new walk way will destroy the best flat ball throwing spot in the whole park along the fence line. I understand the liability issues a non fenced park brings i see it every day almost, fights, dogs in the parking lot issues, on the hill off leash. But i believe we don't need another fence between us and the park and the dogs don't need to lose that area to play. If there was a gated fence from the community garden to the north where it meets the current fence line, also another at the entry to the park at the east side to the current fence lines of the homes it keeps with the natural feel of the park and keeps from adding issue with security via the ally between fences that the park can't control. You could say that the way it is now is a security concern for us and it is at night but most people stay away from the property lines during the day unless they come to talk. but I feel as though a path that close would give us the same issues as our southern neighbors on the hill have and another area for non leashed dogs with humans to jump and scare people like they do up on the hill so why have it there? Those money's could be better spent on sound proofing for the venue since u can hear and feel the music in your home during most events! I know that others maybe even our neighbors will want to have more access to walk in nature with out being run up on by dogs and there bad humans but more conversations need to be had about the impact on direct neighbors. I would have loved to be at the meeting but only found out about it the day previous and had to work as I didn't receive anything via mail that i was aware of. I heard there was a sign posted at the entry but we never go there because we don't need to. I hope we will have the ability to again speak with someone from parks about everything. The park seems to me as a neighborhood dog park with a party venue for the parks dept. There are well over 100 parks and two others within walking distance to be enjoyed for humans so why not let hollinshead be for the dogs with some fixes for the venue... O thats right dogs don't pay taxes rah rah rah. .

5/31/2024

Date: May 31, 2024

Project Name: Hollinshead Park Improvement Project

Submitted Comments

Seventeen years ago, BPRD presented concepts for the Hollinshead Park Master Plan. Following this presentation (January 2007) we submitted comments on the plan, which included concerns relating to proposals for a paved history loop. In those comments we shared our opinion that the irrigated turf-grass area under the large pines south of the parking lot should be off limits to trail construction and development of any kind. We shared that this area is the “from-the-street” definition of Hollinshead Park and that it should remain an open area of eye catching, unbroken green. Despite changes in the park during the subsequent years, the character of the park has thankfully remained mostly intact. The southwestern portion of the park, with its unbroken sloping green lawn punctuated by large orange-barked ponderosa pine, continues to be a cherished part of the park’s character. It is an oasis that provides a respite from Bend’s increasing urban development. As long-time adjoining neighbors of the park, we continue to desire that this scenic character be preserved.

On Monday, May 20, 2024 we attended the open house for the current Hollinshead Park Improvement Project. We strongly oppose the proposed location of the historic walking tour in the southwest portion of the park. This supposed “improvement”, with its paved path that would snake multiple times through this oasis of green grass and large ponderosa pine, threatens to negatively affect and potentially destroy the scenic characteristic of this portion of the park.

While we strongly oppose the proposed location of the historic walking tour, we are supportive of the concept of a “History Walk” with interpretive signs to share the park’s history and features. We request at least one alternative to the current “History Walk” proposal be developed for community consideration. We ask that this new proposal preserve the current character of the southwest portion of the park. We offer the following comments to consider in developing this alternative.

1. The paved path proposed south of the parking lot should be relocated, moving it closer to the historic buildings. Incursion into the irrigated turf-grass area under the large ponderosa pine would ideally be avoided. Where not possible, incursion should be minimized and limited to the edges of the irrigated turf-grass area. There appear to be a number of relocation opportunities that would meet these design criteria.

2. With the current proposal, an interpretive sign addressing the theme “Pre-European Settlement” is planned in the irrigated turf-grass area. Relocating the path to avoid incursion into this area would not preclude addressing this theme. An interpretive sign on this theme could go in a variety of places along the relocated path of the “History Walk”.

Aside from our opposition to the proposed location of the historic walking tour, we are supportive of many of the other project elements including:

1. Renovating the parking area to improve circulation and operational issues,
2. Enclosing the dog off-leash area to increase park-user safety and reduce conflicts, and
3. Constructing a new permanent restroom.

6/4/2024

I am a heavy user of HH - the dog park specifically. I appreciate the thought of enclosing the dog park, but would appreciate if consideration was taken to understand that HH is one of the few dog parks in the area, and one of the few areas on the east side where dogs have access to open space AND water. This is a true gem on the east side and alleviates adding to traffic by needing to drive across town to the west side for access to trails and water. I think this should really be taken into consideration.

I propose that the current set up at HH actually alleviates some combative interactions, in that there is a social aspect of the park where dogs can play, as well as a walk/hike where they can "cool down" from socializing. Dog parks are very successful when you have both of these aspects - like at Pine Nursery where there is a big social field and then some little hike options. This allows dogs to gain social skills in the large field, but to have an opportunity to bring things down when they are getting too activated. When you enclose dogs in a smaller space, without a "cool down/chill" option this often leads to more fights (between dogs and then between their people).

There are many small parks on the eastside - including Pilot Butte which is very close by. I would really love, if there is to be an enclosure, that it encompass the wooded hill area and the water access. There are a lot of complaints about dogs and I think part of why Bend has such a large dog population is because traditionally we have had many opportunities for dogs to learn social skills with both dogs and humans. The more we fence them off the more likely they are to learn some unsavory behaviors that will continue to compound this perception that dogs are contributing to people's inability to enjoy our public spaces.

Please keep the dog park a dog park and not a dog kennel where they are just taken to relieve themselves.

6/4/2024

I'm generally in favor of the proposed improvements except for the enclosed dog park. I think this would degrade the spirit and aim of the park as an open space reminiscent of a homestead and turn it into a park that could turn out to be overproduced and over-regulated. A large fence would destroy the pastoral and free flowing nature of the park by chopping up a large part of it. We have several dog parks in the city already. In the proposal the reason for the enclosure was to reduce conflicts. This seems vague and I would like to see evidence supporting it. In the many times I have been there, I've not seen any issue with dogs running loose. This park is special because of its heritage and cordoning off such a large part of it would greatly diminish it. It might also discourage those who don't have dogs to not go into a the nicest part of the space. If, in fact, off leash dogs are an issue, I would instead propose requiring dogs to be leashed at all times such as it is in most other parks. That way, we could still maintain the open space and mitigate any issues with loose dogs that may arise. Sometimes we can do too much in the way of enhancements. Let's not lose what's special about this gem of a park.

6/5/2024

Hello Ian,

Thanks for your thorough response. I was not aware of all those issues with off leash dogs and now agree that's not a sustainable situation. So I'd still like to go back to my stance of requiring dogs to be leashed as per city regulations. In my opinion, a fenced OLA in Hollinshead would take up too much of the open space making it primarily a dog park and less of a people park. I'm a dog person myself but I think it's selfish we should prevail at Hollinshead.

I get it that's there's not a nearby fenced OLA, the closest being Ponderosa Park but to that end, why not have the OLA in Al Moody Park which is close by, and has more room? Would that be workable? I just think it would diminish the historic character of Hollinshead by making it a dog intense space. It's just too small of a park for an OLA so why have one at all? Rather, I would like to see it modeled after Juniper Park which is open and accommodating.

Anyway, I appreciate the balancing act you all have to take when addressing needs of a park. All parks can't be all things to all people. As with any negotiation, in a funny way, it seems like the best overall solution is when all parties go away feeling they didn't get everything they wanted!

6/7/2024

I would love to see another pickleball court or two being added into a park in this area of town. Would love to see here or at Goodrich Pasture Park

6/11/2024

I have lived across the street from this park for 23 years. DO NOT FENCE IT IN. DO NOT DESTROY THE BEAUTY . IT IS SPECIAL. LEAVE IT ALONE.

6/24/2024

Hello,

I have concerns about the historic path. I believe signage of the history would be a benefit to the community but a path would be unnecessary and in conflict with the spirit of the park. In 1972 my family moved to a home whose property extended halfway through the irrigation canal and shared a back border with Hollinshead Farm so I believe I have a good sense of the historical significance of the park. I now own a different home that backs up onto the park so am also personally concerned about the path. I would also like to provide input on where the dogpark fence will be placed and what it will look like.

thank you,

6/25/2024

This is a spectacular park. I really hope we see some dog management upgrades like fencing and Accessibility improvements though. I unfortunately cannot bring my dog to dog park, but the laissez-faire attitude of other dog owners having their dogs off-leash and running up to us while we're walking on leash on the south trail or sidewalk, often causes conflict. And it's a great park, but one of my best friends who has a great off-leash dog, can't utilize it as well because it's not thoughtfully designed to those in wheelchairs.

I hope to see improvements!

6/27/2024

Hollinshead Park is one of the best if not the best dog park in town. One of the biggest reasons is its openness and ability to enter and exit in all directions. If I wanted to go to a fenced in dog park I would take my dog to one specifically, but Hollinshead is a neighborhood park and it is aesthetically pleasing as a natural park, adding fencing would take away the natural beauty this park offers in the neighborhood. The only addition I've seen that truly makes sense is the growth of the parking areas and permanent restrooms. I think this park is very well maintained by both the town and its users and I believe it should stay open and unfenced to maintain its natural environment.

6/28/2024

PLEASE don't fence in the off-lease area! This park is a true jewel of this town. There are plenty of dog parks that are fenced in. There is a truly special quality of Hollinshead and I attribute it to it being unfenced. I have many friends with dogs that do not come to this park because THEIR DOGS ARE NOT TRUSTWORTHY TO TAKE TO AN UNFENCED PARK. In a fenced park there are people that don't pay nearly close enough attention to their dogs. Fencing it WILL NOT MAKE IT SAFER. It will just bring lazy dog owners with less well behaved dogs. They have plenty of places to go. Most people who currently use the park are attentive and conscientious. It's really sad to change something that works so well.

6/29/2024

Adding a permanent restroom is a good idea. Fencing in the entire park is not a good idea. I have never seen a dog run out of the park in eight years. But, if that is a problem, simply fence the east and west entrances to the park.

If people using the fenced in outdoor yard on the north side of the barn have concerns, two simple gates at each of the two entrances to the yard solves that problem.

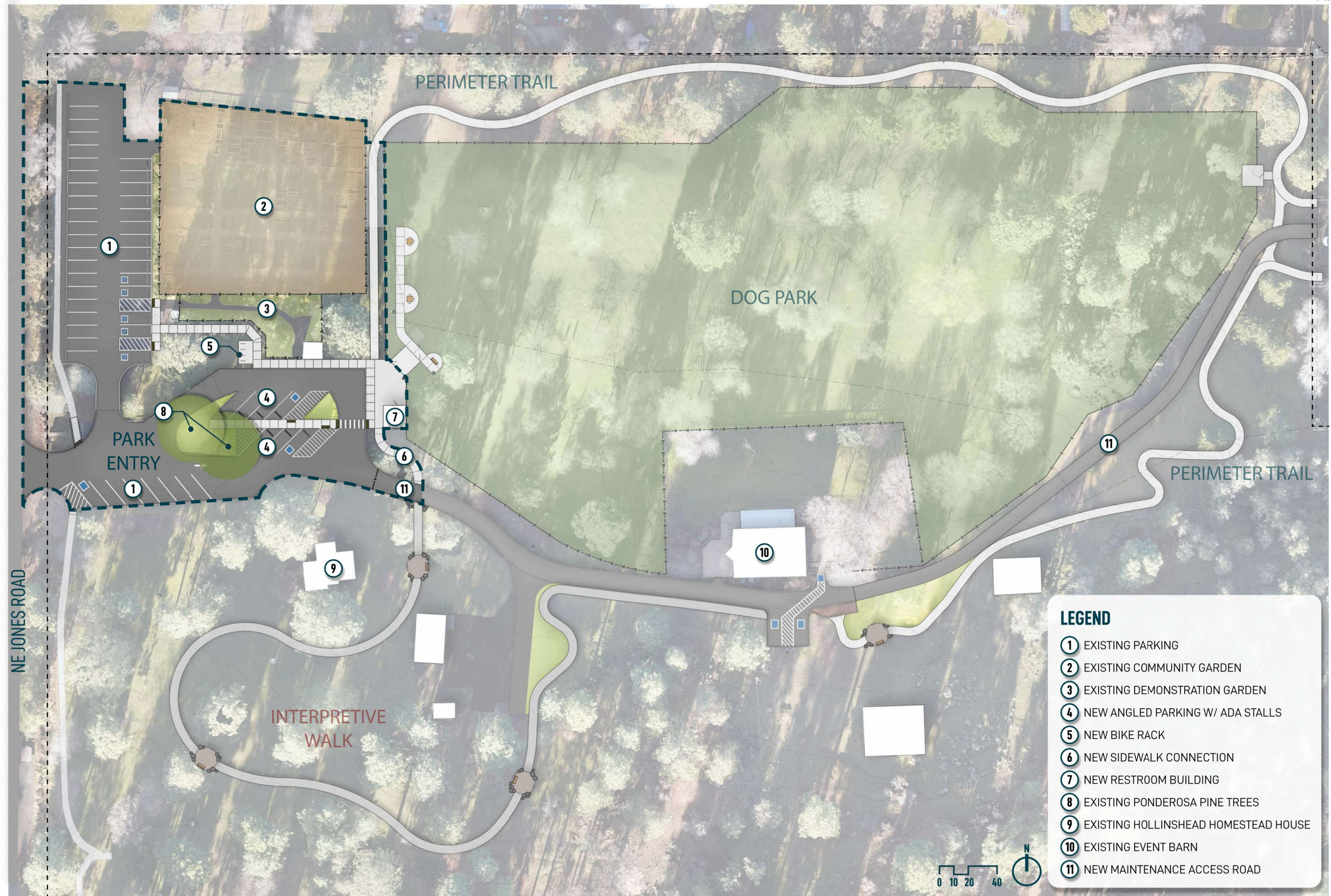
Fencing in the entire dog park reduces the play area by about 20%. Why do that???

Many people walk down the hill on the south side of the park to access the park. Don't lock them out

Please do not ruin the parks wonderful ambience by chain-link fencing the whole place.

7/1/2024

Hi, please add my name to the list of nimpys who oppose the fencing of the dog park. I find the lack of fencing attracts a far more responsible dog demographic than at Pine Nursery and other fenced areas, and while I can see how it might improve safety for a small group of park users (primarily bikes who use it as a cut-through) I feel it's throwing out the baby with the bathwater. The open-space concept is what makes this park unique and welcoming, and folks whose dogs present real conflicts simply do not use this park in my experience. Please consider retaining the non-fenced dog park in this conveniently accessible neighborhood park, the only one I can take my husky to in the warm weather months. That's all, hope you have a nice summer.

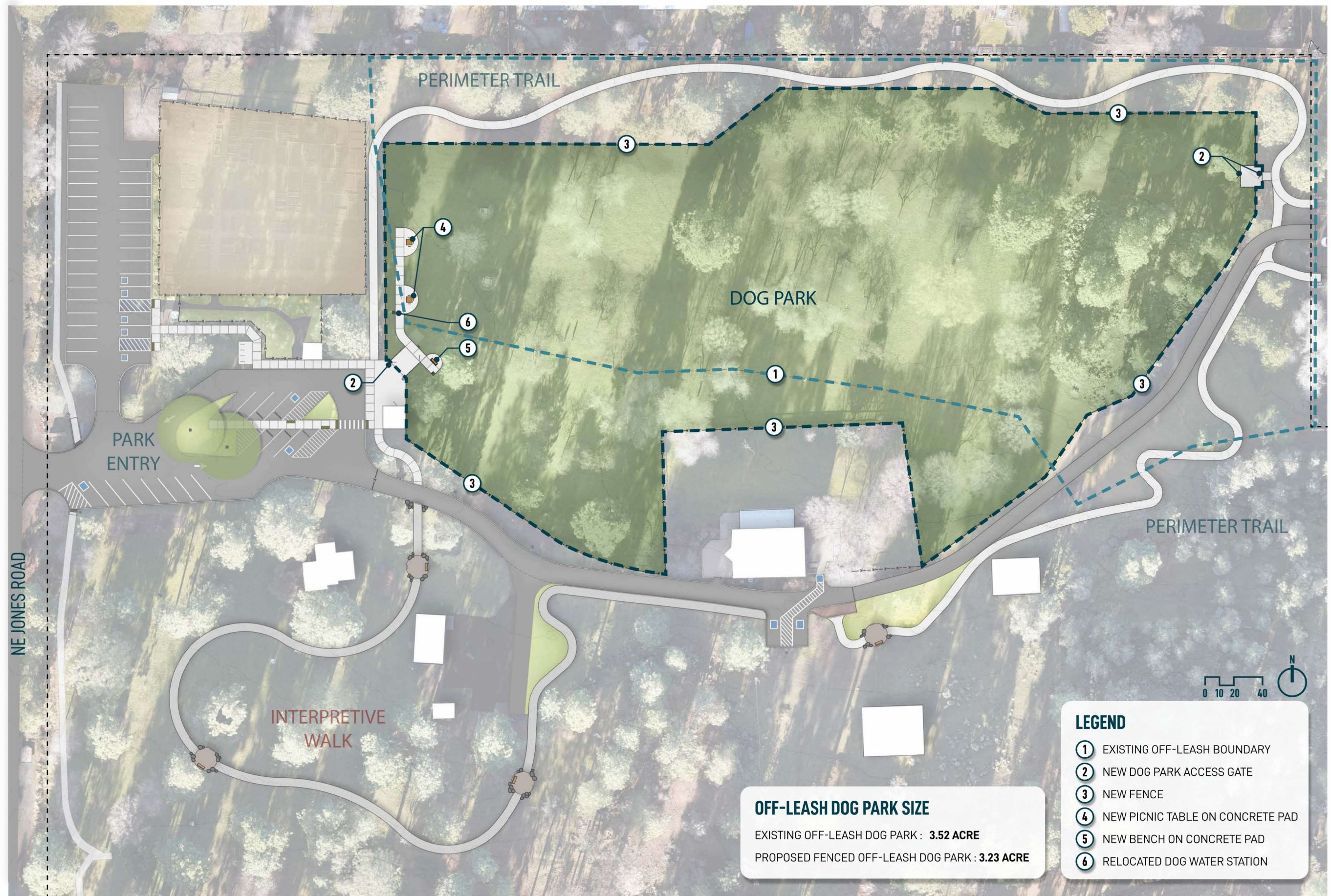


PARK ENTRY **HOLLINSHEAD PARK | BEND, OR**

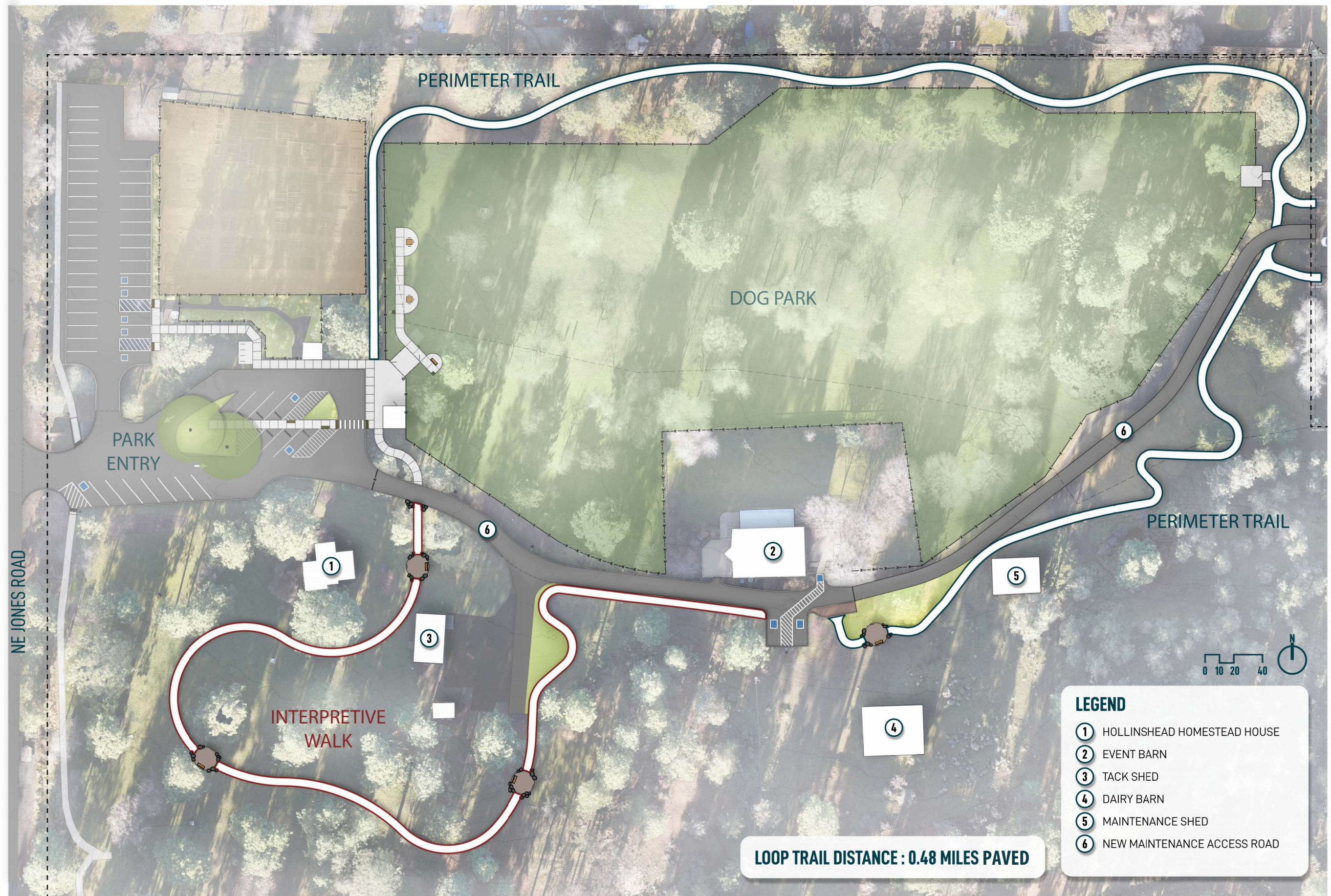


PARK ENTRY: ENLARGEMENT

HOLLINSHEAD PARK | BEND, OR

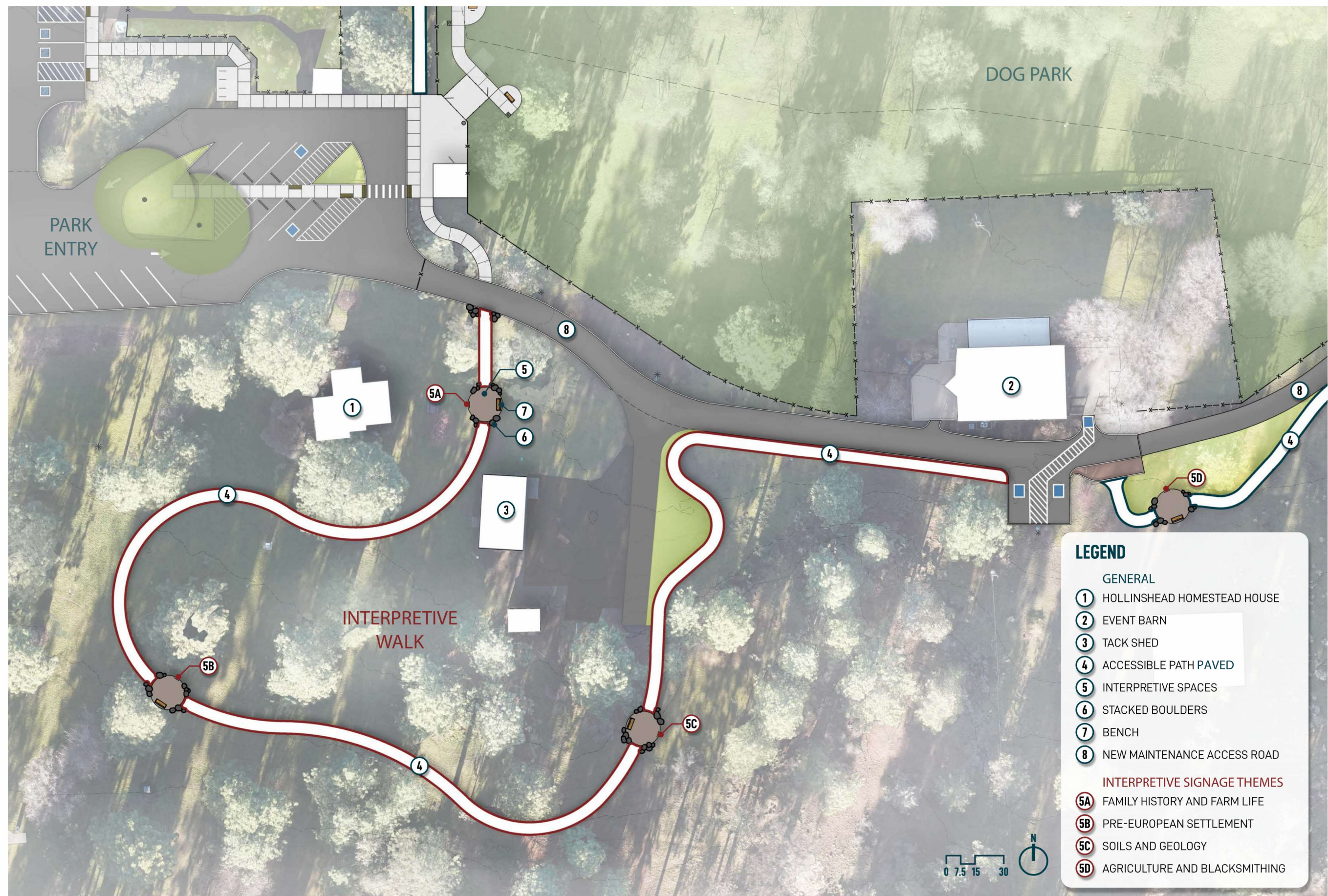


FENCED OFF-LEASH DOG PARK **HOLLINSHEAD PARK | BEND, OR**



ACCESSIBLE PAVED TRAIL LOOP

HOLLINSHEAD PARK | BEND, OR



INTERPRETIVE TRAIL: ENLARGEMENT

HOLLINSHEAD PARK | BEND, OR

**Board Calendar
2024-2025**

**This working calendar of goals/projects is intended as a guide for the board and subject to change.*

AUGUST 6-Canceled

AUGUST 20-Canceled

SEPTEMBER 3

STAFF INTRODUCTIONS

Becky Rexford

- Peter Darquea, Sports Program Supervisor
- Josh Motenko, Sports Program Supervisor
- Bailey Adams, Sports Program Supervisor

Sue Glenn

- Paul Reinhardt, Larkspur/BSC Supervisor

WORK SESSION

- City of Bend Tax Exemption Programs – *Rachel Colton and Racheal Baker, City of Bend (30 min)*
- Art Station project update – *Jason Powell and Matt Mercer, and Hacker Architects (30 min)*
- Strategic Plan Action Item Update - *Rachel Colton (15 min)*
- Comprehensive Plan Draft Review– *Sara Anselment (30 min)*

BUSINESS SESSION

SEPTEMBER 17

STAFF RECOGNITION

Don Horton, Theresa Albert

STAFF INTRODUCTIONS

Zara Hickman

- Rob Fox, PM2 Natural Resources
- Alan Vigent, PM1 Trails

WORK SESSION

- Trail Counter Program – *Zara Hickman and Andy Sommerville (20 min)*
- Consider proposed Lease Amendment with Boys and Girls Club – *Kristin Toney (30min) tentative*
- Draft Strategic Plan – *Rachel Colton, Kristin Toney, Kelsey Schwartz (45 min)*

CONSENT AGENDA

- Drake Park bank and trail improvement CMGC contract review – *Brian Hudspeth*
- Codify personnel policies – *Theresa Albert*
- Approve Lease Amendment with Boys and Girls Club – *Kristin Toney*

BUSINESS SESSION

OCTOBER 1
WORK SESSION
BUSINESS SESSION

Future Topics

SDC Waivers

Park Services Report: Hardsurface Program – *Alan Adams and Jason Monaghan (15 min)*

Website Update/Data Sharing – *Julie Brown*

IGA with NUID for canal trail – *Henry Stroud*

Approve SE Neighborhood Park Purchase and Sale Agreement – *Henry Stroud (20 min)*

DEI Update – Bronwen Mastro

Approve Exclusion Policy – *TBD (30 min)*

Comprehensive Plan Adoption – *Sara Anselment*

SDC Project List Update – *Sara Anselment and Kristin Toney*

Approve IGA with the City of Bend for Transportation Fee – *Kristin Toney (10 min)*

The Robot -